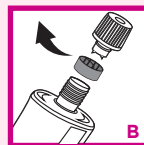


1 QUICK AND EASY PREPARATION



UNSCREW the cap of the Colorant crème tube **1**

UNSCREW the cap of the Colorant crème tube **1**



REMOVE the grey ring

REMOVE the grey ring



RESCREW the cap to pierce the tube

RESCREW the cap to pierce the tube



UNSCREW the top of the Developer Crème bottle **2**. The tube of the Colorant crème will already have been pierced with the cap from doing the allergy alert test.

UNSCREW the top of the Developer Crème bottle **2**. The tube of the Colorant crème will already have been pierced with the cap from doing the allergy alert test.



SQUEEZE the whole tube of Colorant crème **1** into the bottle of Developer Crème **2**.

SQUEEZE the whole tube of Colorant crème **1** into the bottle of Developer Crème **2**.



CLOSE the bottle of Developer Crème carefully with the precision tip applicator.

CLOSE the bottle of Developer Crème carefully with the precision tip applicator.



SHAKE vigorously to obtain a completely even mixture.

SHAKE vigorously to obtain a completely even mixture.



UNSCREW THE TIP OF THE APPLICATOR IMMEDIATELY AFTER MIXING TO AVOID THE BOTTLE BURSTING AND DAMAGE FROM THE PRODUCT OVERFLOWING.

UNSCREW THE TIP OF THE APPLICATOR IMMEDIATELY AFTER MIXING TO AVOID THE BOTTLE BURSTING AND DAMAGE FROM THE PRODUCT OVERFLOWING.

2 CLEAN AND EASY APPLICATION

Choose which of the following two methods is the most suitable for you / Choose which of the following two methods is the most suitable for you

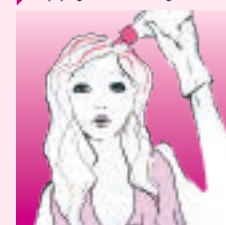
OPTION A / OPTION A

ON NATURAL HAIR / ON NATURAL HAIR

• YOU HAVE NEVER COLORED YOUR HAIR / YOU HAVE NEVER COLORED YOUR HAIR

• YOU LAST COLORED YOUR HAIR OVER 3 MONTHS AGO / YOU LAST COLORED YOUR HAIR OVER 3 MONTHS AGO

► Apply all over your hair / Apply all over your hair



APPLY in sections strand by strand by parting the hair using the precision tip of the applicator.

SPREAD the rest of the product through the lengths and ends of the hair. **YOU MUST USE ALL OF THE MIXTURE**



MASSAGE to ensure the product is thoroughly worked into the hair and is evenly spread.

MASSAGE to ensure the product is thoroughly worked into the hair and is evenly spread.

LEAVE FOR 20 minutes*
LEAVE FOR 20 minutes*

*If your hair has recently been bleached, permed, relaxed or permanently straightened, you must wait 15 days before applying the hair color. In this case, leave the coloring mixture on for 15 minutes only.

*If your hair has recently been bleached, permed, relaxed or permanently straightened, you must wait 15 days before applying the hair colour. In this case, leave the coloring mixture on for 15 minutes only.

NEVER KEEP ANY UNUSED MIXTURE AND DISPOSE OF IT IMMEDIATELY TO AVOID THE BOTTLE BURSTING AND DAMAGE FROM THE PRODUCT OVERFLOWING.

3 RINSE AND CONDITION



ADD a little lukewarm water and massage thoroughly into the hair

RINSE thoroughly until the water runs clear.

ADD a little lukewarm water and massage thoroughly into the hair

RINSE thoroughly until the water runs clear.



APPLY a generous amount of the Conditioner **3** throughout the hair.

RINSE THOROUGHLY with lukewarm water.

APPLY a generous amount of the Conditioner **3** throughout the hair.

RINSE THOROUGHLY with lukewarm water.

LEAVE TO WORK FOR 2 minutes.
LEAVE TO WORK FOR 2 minutes.

KEEP the rest of the bottle of Conditioner. You can reuse it to condition after shampooing to enhance your color shine. KEEP the rest of the bottle of Conditioner. You can reuse it to condition after shampooing to enhance your color shine.

OPTION B / OPTION B

ON COLORED HAIR / ON COLORED HAIR

• YOUR HAIR HAS BEEN COLORED IN THE LAST 3 MONTHS / YOUR HAIR HAS BEEN COLORED IN THE LAST 3 MONTHS

► Apply to the roots and leave for 15 minutes / Apply to the roots and leave for 15 minutes



APPLY in sections strand by strand, concentrating the product at the roots.

MASSAGE the roots to ensure the product is thoroughly worked into the hair and is evenly spread.

APPLY in sections strand by strand, concentrating the product at the roots.

MASSAGE the roots to ensure the product is thoroughly worked into the hair and is evenly spread.

LEAVE FOR 15 minutes* on the roots
LEAVE FOR 15 minutes* on the roots

*If your hair has recently been bleached, permed, relaxed or permanently straightened, you must wait 15 days before applying the hair color. In this case, leave the coloring mixture on for 10 minutes only.

*If your hair has recently been bleached, permed, relaxed or permanently straightened, you must wait 15 days before applying the hair color. In this case, leave the coloring mixture on for 10 minutes only.

► Apply on the length / Apply on the length

SPREAD the rest of the product through the lengths and ends. **YOU MUST USE ALL OF THE MIXTURE.**

MASSAGE to ensure the product is thoroughly worked into the hair and is evenly spread.



SPREAD the rest of the product through the lengths and ends. **YOU MUST USE ALL OF THE MIXTURE.**

MASSAGE to ensure the product is thoroughly worked into the hair and is evenly spread.

LEAVE FOR ANOTHER 5 minutes
LEAVE FOR ANOTHER 5 minutes



NEW / NEW
Luminizing Conditioner nourishes and hydrates the hair, leaving it **soft and voluptuous for an exceptional gloss**. Enriched with selected ingredients that reveal the **beautiful rich tones** of your specific hair color. Luminizing Conditioner nourishes and hydrates the hair, leaving it **soft and voluptuous for an exceptional gloss**. Enriched with selected ingredients that reveal the **beautiful rich tones** of your specific hair color.

