

# GARNIER Color Naturals Crème

NEW

PERMANENT HAIR COLOR  
MORE GENEROUS  
THAN EVER:

+20% NOURISHING  
CONDITIONER

## INSTRUCTION LEAFLET

For the best result, take the  
time to read the instruction  
leaflet before getting started.



### SAFETY INSTRUCTIONS: ALWAYS READ BEFORE USE AND FOLLOW CAREFULLY

This product is not intended for use on persons under the age of 16.

#### IGNORING AN ALLERGY CAN BE LIFE-THREATENING.

It is essential that you always perform an **ALLERGY ALERT TEST 48 hours before** each use of this product, as an allergy can develop suddenly even though you have previously used a hair colorant of this or any other brand.

This test represents an important precaution which has proved to be reliable when carried out under the condition outlined below. However, be aware that even if an allergy alert test has been carried out you may still experience an allergic reaction when you colour your hair. The allergy alert test is not a guarantee of avoiding future allergic reactions. **Please consult a doctor, if you have any doubts.**

#### IMPORTANT: HAIR COLORANTS CAN CAUSE SEVERE ALLERGIC REACTIONS.

To help you reduce the risk of an allergic reaction, it is essential to follow the precautions below.

##### Do not colour your hair if:

- you have a rash on your face or sensitive, irritated and damaged scalp.
- you have ever experienced any reaction after colouring your hair.

#### TEMPORARY "BLACK HENNA" TATTOOS MAY INCREASE YOUR RISK OF ALLERGY, EVEN PERFORMED A LONG TIME AGO:

- If you have experienced a reaction to a temporary "black henna" tattoo in the past: do not colour your hair in any case
- Even without experiencing a reaction, you are likely to have become allergic without realising it: never use this product unless you have done the allergy alert test 48 hours before use.

#### HOW TO PERFORM THE ALLERGY ALERT TEST: 48hrs before the coloration

• **Remove earrings.** Behind the ear and using a cotton wool-bud, apply a small quantity of unimixed colorant product (tube 2 Nourishing Colour Cream tube) to cover an area of 2 cm<sup>2</sup> (e.g. the size of a small coin).

Allow to dry.  
Carefully reseal the tube colorant cream and keep it for the application 48 hours later.

• Leave for 48 hours without washing, covering or touching.

*If during this period you notice any abnormal reactions, such as itching, redness or swelling in or around the test area, DO NOT APPLY THE PRODUCT.*



#### SPECIAL PRECAUTIONS

In case of a reaction during the application such as:

- stinging, irritation, rash or burning sensation on the scalp, rinse immediately and discontinue use. Consult your doctor.

- if you experience shortness of breath, seek immediate medical attention and contact the manufacturer and/or the relevant national authority.

Before colouring your hair again, consult a doctor.

**If, during the days following application,** itching, redness or spots on the scalp or skin occurs, swelling of the eyes and/or face, blisters or oozing of the scalp and/or skin occurs, seek immediate medical attention and contact the manufacturer and/or the relevant national authority.

Keep the empty package and the instruction leaflet for a few days in case you experience a reaction.

- Wear the gloves supplied in the carton.

- Remove all metal objects from hair before colouring and keep them away during colouring. Do not use metal hair styling tools.

- Prepare and apply the mixture in a well-ventilated area.

- Avoid contact with eyes, ears and face. Do not use to dye eyelashes or eyebrows.

- This product contains ingredients which may cause severe eye irritation and possible permanent eye injury. Rinse the eyes immediately and thoroughly if the product comes into contact with them. If you wear contact lenses, take them out before rinsing your eyes thoroughly with water. In both cases, seek medical advice.

- Do not inhale or ingest.

- Do not use to dye a beard or moustache or for any other purpose than hair colouring. Avoid any unnecessary contact with the skin.

- Rinse hair well after application.

- **Wait at least 2 weeks after using, a relaxer, a perm or a straightening process on the hair before applying this coloration.** Do not use if your hair has been coloured with henna or with a progressive hair colorant. Keep developer away from heat and light. Do not mix this colorant with any other product. Do not keep any unused product.

Do not leave the mixture in a closed bottle (bottle may expand or burst). Keep out of reach of children.

### FOLLOW THE INSTRUCTION FOR USE

#### YOUR KIT CONTAINS



Nourishing  
Colour Cream 2

Gloves

Developer  
Cream 1

Instruction  
leaflet

Nourishing Conditioner  
with 3 nutritive oils 3  
**NEW! now with  
+20% nourishing conditioner!**

#### YOU WILL NEED



A non-metallic bowl



A hair colouring brush



An old-towel or t-shirt

### COLORIST ADVICE

If your hair is permed, wait at least 15 days before applying this product.

#### DO A FULL HEAD APPLICATION IF:

- You have never coloured your hair before.
- Your hair is coloured in a lighter shade than this one.

#### YOU CAN DO A TOUCH-UP APPLICATION IF:

- Your hair is already coloured in a shade similar to this one.
- After a few weeks of having coloured your hair in a similar shade, your hair has grown and you need to colour the roots.

### MEASURING TABLE

#### - CASE 1: FULL HEAD -

When you cover the entire length  
of the hair from roots to tips.



#### - CASE 2: TOUCH UP -

When you cover only the roots of the hair.



### STEP 1 I GET READY: I PREPARE AND I MIX UP MY COLOR



Put gloves on and protect  
your shoulders from any  
splashes with your old  
towel or t-shirt.

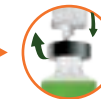


Open the cap of  
the Developer Cream  
bottle 1.

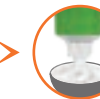


Into a non-metallic bowl:  
For case 1: pour  
the entire bottle 1.  
For case 2: pour half  
of the bottle 1  
(see measuring table).

Open the Nourishing



Colour Cream tube 2  
and remove the plastic  
ring.  
Then screw the cap  
back completely to  
piece the tube (already  
done  
to perform the  
allergy test).



In the same non-metallic  
bowl:  
For case 1: squeeze  
the entire tube 2.  
For case 2: squeeze half  
of the tube 2  
(see measuring table).



With your hair colouring  
brush mix well until the  
mixture  
is smooth in texture. Apply  
immediately.

After obtaining  
your mixture, replace  
the caps on the bottle  
and tube  
and close tightly.

### STEP 2 I APPLY: IMMEDIATELY, ON DRY, UNWASHED HAIR

#### - CASE 1: FULL HEAD -



Start by applying the  
mixture to the roots,  
making sections  
separating the hair,  
strand  
by strand.



Quickly spread  
the leftover mixture  
through the rest of  
the hair.



Pile the hair on the  
top of your head.  
Leave to develop  
for 25 minutes, or  
35 minutes if you  
have over 70% grey  
hair or resistant hair.



Apply the mixture on  
the root area only,  
making sections  
strand by strand.



minutes, or  
25 minutes if you  
have over 70% grey  
hair or resistant hair.



Leave to develop for  
10 more minutes.

Leave to develop for 15

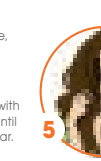
Apply the rest of the

Over time, the cream around the nozzle may turn dark due to exposure to air. Ignore, as this has no bearing on product performance.

### STEP 3 I RINSE & CONDITION: TO REVEAL MY NEW RADIANT COLOR



After the  
development time,  
wet hair a little  
and gently lather  
for 1 minute.  
Rinse thoroughly with  
lukewarm water until  
the water runs clear.



Cocoon your hair by  
spreading a  
generous amount of  
Nourishing  
Conditioner 3 with  
3 nutritive oils, and  
massage gently.  
Leave it for  
2 minutes. Hair is  
intensely nourished  
and soft to the touch.



Rinse thoroughly  
with lukewarm water  
and style as you  
usually would.

THROW AWAY ANY  
UNUSED LEFTOVER  
MIXTURE

GARNIER

14 rue Royale 75008 Paris FRANCE  
TSA 75000 93584 ST OUEEN CEDEX FR  
www.garnier.com

CENTRE CONSEILS CONSOMMATEURS  
7, rue Touzet - TSA 40 016 - 93588 Saint-Ouen Cedex  
0 810 666 333

