

295 mm

205 mm

Palette

INTENSIVE  
COLOR Creme

87 mm

4 mm

XXXXXXXX

8 mm

12 mm

3.

2.

2.1

2.2

3.

4.

8 mm

4 mm

40 mm

**You will need:**

Bowl  
+ brush, towel, clock, comb  
with widely spaced teeth



**In this box you find:**



Instruction leaflet



Pair of gloves



Bottle with developer lotion



Tube with color creme



Sachet with care mask

Total application

Regrowth

On length

**IMPORTANT ADVICE: Before application please read safety instructions on the back first. Conduct an allergy alert test. Apply the product directly after mixing.**

**⚠ For bleached, highlighted and damaged hair, pay special attention to the Tips for Application!**

## Instruction Leaflet

1.

### PREPARATION

- It is not recommended to wash your hair 24–48 h prior to application.
- Put on the enclosed pair of **gloves (1)**.
- Open the **developer bottle (2)** and pour out the contents into the non-metallic bowl.
  - Shade 0-00: Cut off the corner of the Blonde-Activator sachets and add the content to the developer lotion in the bowl.
  - For very short hair or regrowth application, **mix only half of the color cream tube and developer lotion** (for 0-00 use only one Blonde-Activator sachet).
  - If your hair is **longer than chin length**, we recommend the use of **two packs** of Palette Intensive Color Creme.
- Open the tube (3) and push the upper end of the cap through the membrane of the tube and add the **Color Creme (3)** to the developer lotion (2).
- Mix well (with a brush) until all components are thoroughly mixed.
- Cover your shoulders with a towel.
- For optimal result please use **immediately** and do not keep rests.

2.1

### TOTAL APPLICATION (FULL HEAD)

This application is recommended if

- you are coloring your hair permanently **for the first time**, or
- your previous hair color has **totally grown out**, i. e. **no regrowth is visible**.

- 1. APPLY** the mixture **on dry hair**, starting at the nape of the neck with the help of a brush. Leave about 2 cm free at the **hair roots**. Apply the coloring mixture evenly throughout the hair. Then apply the mixture on the hair roots as well.
- 2. LEAVE** the mixture for **30 minutes**. For lightening shades 0-00, 9,5-1, 9,5-21, 10-1, 10-19, 10-2, 10-46, 12-21, 12-46, 7-65 and 6-68, let the mixture work between **30 – 45 minutes** depending on the color result intensity you would like to achieve. (For permed or damaged hair see “Tips for Application”.)

2.2

### REGROWTH APPLICATION

This application is necessary if

- your hair is already colored permanently and a **regrowth is visible**, or
- your **hair tips are darker or in poor condition**.

- 1. APPLY** the mixture **on dry hair** with the help of a brush on the **regrowth area** only. Shade 0-00: Apply to the roots area **only**.
- 2. LEAVE** the mixture on regrowth area for **20 minutes**. (For permed hair see “Tips for Application”.) For lightening shades 0-00, 9,5-1, 9,5-21, 10-1, 10-19, 10-2, 10-46, 12-21 and 12-46 let the mixture work between **30 – 40 minutes (for shade 0-00: 30 – 45 minutes and for shades 7-65 and 6-68: 20 – 30 minutes)**, depending on the color result intensity you would like to achieve. (For permed hair see “Tips for Application”.)
- 3. DISTRIBUTE** it evenly **throughout** the hair using a comb with widely spaced teeth. Shade 0-00: Do **not distribute** it through **the whole length** of the hair, only apply to the roots.
- 4. LEAVE** for further **10 minutes**. Lightening shades 9,5-1, 9,5-21, 10-1, 10-19, 10-2, 10-46, 12-21, 12-46: Leave for **5 minutes only**.

3.

### RINSING

**RINSE** the hair well with warm water once the exposure time has finished **until water runs clear**.

4.

### AFTER TREATMENT

Apply the Care Mask into wet hair. Allow to work for 2 minutes and rinse out thoroughly.

40 mm



4 mm

die cut: 295 x 205 mm

## TIPS FOR APPLICATION/INFORMATION

- Wait at least 2 weeks **before and after perming** before using a coloration and reduce the exposure time by 5–10 minutes.
- If your hair is
  - greyer (except for shades 1-0, 1-1, 3-0, 4-0, 4-5, 4-60, 5-0, 5-1, 6-0, 6-1, 6-80, 7-0, 7-1, 7-2, 8-0, 8-1, 9-0, 9-1 and 9-40) or **lighter** than recommended, **damaged or permed**: The result of the coloration can become more intensive than that shown on the picture of the packaging or on the shade chart.
  - **darker** than recommended: The result of the coloration can become less intensive than that on the picture of the packaging or on the shade chart.
  - **permed or bleached or has strands**: We recommend shortening the application time in the hair lengths by 5–10 minutes.
  - very dry or in poor condition: Apply the coloration mixture on the tips only for the last 5 minutes of the application time. Otherwise, this could result in a more intensive color.
- **Shades 3-65, 3-68, 4-88, 4-89, 5-57, 5-68, 6-65, 6-68, 6-88, 6-99, 7-17, 7-65, 7-77, 7-887**: In order to obtain a **100 % grey coverage**, mix half of the tube content of the fashionable shade with half of the tube content of a natural shade. Use a natural shade with the same color depth (**3-65 and 3-68 with 3-0**); (**4-88 and 4-89 with 4-0**); (**5-57 and 5-68 with 5-0**); (**6-65, 6-68, 6-88 and 6-99 with 6-0**); (**7-17, 7-65, 7-77 and 7-887 with 7-0**). Without mixing with a natural shade **3-65, 3-68, 4-88, 4-89, 5-57, 5-68, 6-65, 6-88, 6-99, 7-17, 7-77, 7-887** perfectly cover up to **70 % grey hair**. For shades **6-68 and 7-65** up to **50 %**.
- We recommend repeating the application of Palette Intensive Color Creme **every 4 weeks** as hair grows approximately 1 cm in this period.
- Palette Color Creme is **easy to remove from skin** with water and soap, or face water.

## IMPORTANT ADVICE

- Before application, please read the **SAFETY INSTRUCTIONS** below carefully.
- Do not use for 7-65 and 6-68 if you have dark color overload from several applications of dark tones.
- It is not recommended to wash your hair **24 – 48 h** prior to application.
- Avoid the product coming into contact with textiles and synthetic materials, for it will be hard to remove stains.
- Apply the product directly after mixing. Do not keep any unused mixture.
- **Shade 0-00**: Do not use on light blonde hair before or after having used a perm in order to avoid damage.
- **Shades 0-00, 9,5-1, 9,5-21, 10-1, 10-19, 10-2, 10-46, 12-21 and 12-46**: While coloring, do not cover the hair with a plastic or aluminium foil and avoid external warmth influence (e.g. hair-dryer, hair-drying cap or sauna). Do not use on hair that has previously been colored with red or dark shades.

## SAFETY INSTRUCTIONS

**! Hair colorants can cause severe allergic reactions.**

Read and follow instructions. This product is not intended for use on persons under the age of 16. Temporary “black henna” tattoos may increase your risk of allergy.

Do not color your hair if:

- you have a rash on your face or sensitive, irritated and damaged scalp,
- you have ever experienced any reaction after coloring your hair,
- you have experienced a reaction to a temporary “black henna” tattoo in the past.

Contains: see folding box.

- Avoid contact with eyes.
- Rinse eyes immediately if product comes into contact with them.
- Do not use to dye eyelashes or eyebrows.
- Rinse hair well after application.
- Wear suitable gloves.
- Keep out of reach of children.

Keep the empty carton and the instruction leaflet in case you experience a reaction. To reduce your risk, follow these instructions.

### 1. ALLERGY ALERT TEST

Perform an allergy alert test 48 hours before each product use even if you have already used coloring products before. Perform the allergy alert test on an area of skin sized approximately 1 cm x 1 cm on the inside of the elbow.

**All shades except 0-00**: Apply a small amount of the Color Creme in a thin layer on the inside of the elbow with a cotton bud and leave uncovered for 45 minutes. Avoid contact with clothes. Close tube again carefully.

**Shade 0-00**: Take a quarter of a teaspoon of Blonde-Activator from the sachet and mix it in a cup with a level teaspoon of Color Creme using a plastic spoon. Stir well until thoroughly mixed. Apply a small amount of the mixture in a thin layer on the inside of the **elbow** with a cotton bud and leave uncovered for **45 minutes**. Avoid contact with clothes. Seal tube and sachet (with adhesive tape) carefully.

After 45 minutes, wash off the Color Creme thoroughly with lukewarm water. If any reaction occurs during the processing time or during the following 48 hours, you should rinse immediately and not use this colorant. This test represents an important precaution. However, be aware that even if an allergy alert test has been carried out you may still experience an allergic reaction when you color your hair. The allergy alert test is not a guarantee of avoiding future allergic reactions. Please consult a doctor if you have any doubts.

### 2. IF DURING COLORING YOU EXPERIENCE

- any stinging or burning and/or rash, rinse immediately and discontinue coloring your hair as this may be an indication of a more serious reaction. Do not color your hair again before consulting a doctor or seeking medical advice.
- rapidly spreading skin rash, dizziness or faintness, shortness of breath and/or swelling of eyes/face, rinse immediately and seek immediate medical attention and contact the manufacturer.

3. IF AFTER COLORING OR ON THE FOLLOWING DAYS YOU EXPERIENCE problems such as skin or scalp itching, skin or scalp rash, swelling of eyes/face, blistering and/or skin or scalp weeping, seek immediate medical attention and contact the manufacturer.

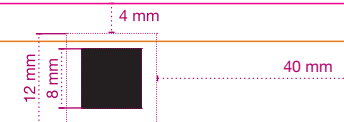
### PRECAUTIONS

- This product contains ingredients which may cause severe eye irritation and possible permanent eye injury. If the developer or hair color mixture gets into your eye, flush immediately with a large amount of lukewarm water and seek medical advice.
- If you wear contact lenses during application and any product gets into your eye, remove the contact lens first, then flush immediately with a large amount of lukewarm water and seek medical advice.
- Do not inhale or ingest the product.
- Avoid unnecessary skin contact.
- Do not use if your hair has been colored with henna or metal dyes.
- Remove all metal objects such as clips and hair pins from hair before coloring and keep them away during coloring. Do not use metal tools.
- Keep developer away from heat and light. Do not mix this colorant with any other products. Do not keep any unused product. Do not leave the mixture in a closed bottle (bottle may expand or burst).
- Do not use on other than scalp hair, especially not on facial hair.

## DO YOU HAVE ANY QUESTIONS?

(Address of each country)

(Consumer hotline/email of each country)



Schwarzkopf & Henkel  
a division of  
Henkel AG & Co. KGaA  
D-40191 Düsseldorf

XXXXXX

die cut: 295 x 205 mm

295 mm

205 mm

**Palette**  
**INTENSIVE COLOR Creme**

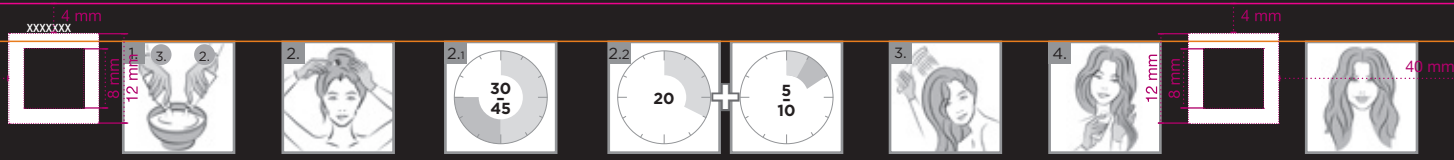
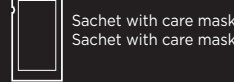
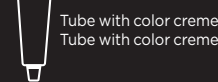
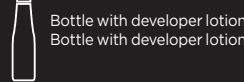
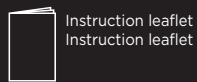
87 mm

**You will need:**  
Bowl + brush, towel, clock, comb with widely spaced teeth

**You will need:**  
Bowl + brush, towel, clock, comb with widely spaced teeth



**In this box you find:**  
**In this box you find:**



**IMPORTANT ADVICE:** Before application please read safety instructions on the back first. Conduct an allergy alert test. Apply the product directly after mixing.

**IMPORTANT ADVICE:** Before application please read safety instructions on the back first. Conduct an allergy alert test. Apply the product directly after mixing.

**⚠ For bleached, highlighted and damaged hair, pay special attention to the Tips for Application!**

**⚠ For bleached, highlighted and damaged hair, pay special attention to the Tips for Application!**

**Instruction Leaflet**

**Instruction Leaflet**

**1. PREPARATION**

- It is not recommended to wash your hair 24 - 48 h prior to application.
- Put on the enclosed pair of **gloves (1)**.
- Open the **developer bottle (2)** and pour out the contents into the non-metallic bowl.
  - Shade 0-00: Cut off the corner of the Blonde-Activator sachets and add the content to the developer lotion in the bowl.
  - For very short hair or regrowth application, **mix only half of the color cream tube and developer lotion** (for 0-00 use only one Blonde-Activator sachet).
  - If your hair is **longer than chin length**, we recommend the use of **two packs** of Palette Intensive Color Creme.
- Open the tube (3) and push the upper end of the cap through the membrane of the tube and add the **Color Creme (3)** to the developer lotion (2).
- Mix well (with a brush) until all components are thoroughly mixed.
- Cover your shoulders with a towel.
- For optimal result please use **immediately** and do not keep rests.

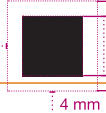
**2.1 TOTAL APPLICATION (FULL HEAD)**

This application is recommended if

- you are coloring your hair permanently **for the first time**, or
- your previous hair color has **totally grown out**, i.e. **no regrowth is visible**.

**1. APPLY** the mixture **on dry hair**, starting at the nape of the neck with the help of a brush. Leave about 2 cm free at the **hair roots**. Apply the coloring mixture evenly throughout the hair. Then apply the mixture on the hair roots as well.

**2. LEAVE** the mixture for **30 minutes**. For lightening shades 0-00, 9,5-1, 9,5-21, 10-1, 10-19, 10-2, 10-46, 12-21, 12-46, 7-65 and



6-68, let the mixture work between **30 - 45 minutes** depending on the color result intensity you would like to achieve. (For permed or damaged hair see "Tips for Application".)

**2.2 REGROWTH APPLICATION**

This application is necessary if

- your hair is already colored permanently and a **regrowth is visible**, or
- your **hair tips are darker or in poor condition**.

**1. APPLY** the mixture **on dry hair** with the help of a brush on the **regrowth area** only. Shade 0-00: Apply to the roots area **only**.

**2. LEAVE** the mixture on regrowth area for **20 minutes**. (For permed hair see "Tips for Application".) For lightening shades 0-00, 9,5-1, 9,5-21, 10-1, 10-19, 10-2, 10-46, 12-21 and 12-46 let the mixture work between **30 - 40 minutes (for shade 0-00: 30 - 45 minutes and for shades 7-65 and 6-68: 20 - 30 minutes)**, depending on the color result intensity you would like to achieve. (For permed hair see "Tips for Application".)

**3. DISTRIBUTE** it evenly throughout the hair using a comb with widely spaced teeth. Shade 0-00: Do **not distribute** it through the **whole length** of the hair, only apply to the roots.

**4. LEAVE** for further **10 minutes**. Lightening shades 9,5-1, 9,5-21, 10-1, 10-19, 10-2, 10-46, 12-21, 12-46: Leave for **5 minutes only**.

**3. RINSING**

**RINSE** the hair well with warm water once the exposure time has finished **until water runs clear**.

**4. AFTER TREATMENT**

Apply the Care Mask into wet hair. Allow to work for 2 minutes and rinse out thoroughly.

**1. PREPARATION**

- It is not recommended to wash your hair 24 - 48 h prior to application.
- Put on the enclosed pair of **gloves (1)**.
- Open the **developer bottle (2)** and pour out the contents into the non-metallic bowl.
  - Shade 0-00: Cut off the corner of the Blonde-Activator sachets and add the content to the developer lotion in the bowl.
  - For very short hair or regrowth application, **mix only half of the color cream tube and developer lotion** (for 0-00 use only one Blonde-Activator sachet).
  - If your hair is **longer than chin length**, we recommend the use of **two packs** of Palette Intensive Color Creme.
- Open the tube (3) and push the upper end of the cap through the membrane of the tube and add the **Color Creme (3)** to the developer lotion (2).
- Mix well (with a brush) until all components are thoroughly mixed.
- Cover your shoulders with a towel.
- For optimal result please use **immediately** and do not keep rests.

**2.1 TOTAL APPLICATION (FULL HEAD)**

This application is recommended if

- you are coloring your hair permanently **for the first time**, or
- your previous hair color has **totally grown out**, i.e. **no regrowth is visible**.

**1. APPLY** the mixture **on dry hair**, starting at the nape of the neck with the help of a brush. Leave about 2 cm free at the **hair roots**. Apply the coloring mixture evenly throughout the hair. Then apply the mixture on the hair roots as well.

**2. LEAVE** the mixture for **30 minutes**. For lightening shades 0-00, 9,5-1, 9,5-21, 10-1, 10-19, 10-2, 10-46, 12-21, 12-46, 7-65 and 6-68, let the mixture work between

**30 - 45 minutes** depending on the color result intensity you would like to achieve. (For permed or damaged hair see "Tips for Application".)

**2.2 REGROWTH APPLICATION**

This application is necessary if

- your hair is already colored permanently and a **regrowth is visible**, or
- your **hair tips are darker or in poor condition**.

**1. APPLY** the mixture **on dry hair** with the help of a brush on the **regrowth area** only. Shade 0-00: Apply to the roots area **only**.

**2. LEAVE** the mixture on regrowth area for **20 minutes**. (For permed hair see "Tips for Application".) For lightening shades 0-00, 9,5-1, 9,5-21, 10-1, 10-19, 10-2, 10-46, 12-21 and 12-46 let the mixture work between **30 - 40 minutes (for shade 0-00: 30 - 45 minutes and for shades 7-65 and 6-68: 20 - 30 minutes)**, depending on the color result intensity you would like to achieve. (For permed hair see "Tips for Application".)

**3. DISTRIBUTE** it evenly throughout the hair using a comb with widely spaced teeth. Shade 0-00: Do **not distribute** it through the **whole length** of the hair, only apply to the roots.

**4. LEAVE** for further **10 minutes**. Lightening shades 9,5-1, 9,5-21, 10-1, 10-19, 10-2, 10-46, 12-21, 12-46: Leave for **5 minutes only**.

**3. RINSING**

**RINSE** the hair well with warm water once the exposure time has finished **until water runs clear**.

**4. AFTER TREATMENT**

Apply the Care Mask into wet hair. Allow to work for 2 minutes and rinse out thoroughly.

die cut: 295 x 205 mm

## TIPS FOR APPLICATION/INFORMATION

- Wait at least 2 weeks **before and after perming** before using a coloration and reduce the exposure time by 5-10 minutes.
- If your hair is
  - greyer (except for shades 1-0, 1-1, 3-0, 4-0, 4-5, 4-60, 5-0, 5-1, 6-0, 6-1, 6-80, 7-0, 7-1, 7-2, 8-0, 8-1, 9-0, 9-1 and 9-40) or **lighter** than recommended, **damaged or permed**: The result of the coloration can become more intensive than that shown on the picture of the packaging or on the shade chart.
  - **darker** than recommended: The result of the coloration can become less intensive than that on the picture of the packaging or on the shade chart.
  - **permed or bleached or has strands**: We recommend shortening the application time in the hair lengths by 5-10 minutes.
  - very dry or in poor condition: Apply the coloration mixture on the tips only for the last 5 minutes of the application time. Otherwise, this could result in a more intensive color.
- **Shades 3-65, 3-68, 4-88, 4-89, 5-57, 5-68, 6-65, 6-68, 6-88, 6-99, 7-17, 7-65, 7-77, 7-887**: In order to obtain a **100 % grey coverage**, mix half of the tube content of the fashionable shade with half of the tube content of a natural shade. Use a natural shade with the same color depth (**3-65 and 3-68 with 3-0**); (**4-88 and 4-89 with 4-0**); (**5-57 and 5-68 with 5-0**); (**6-65, 6-68, 6-88 and 6-99 with 6-0**); (**7-17, 7-65, 7-77 and 7-887 with 7-0**). Without mixing with a natural shade **3-65, 3-68, 4-88, 4-89, 5-57, 5-68, 6-65, 6-88, 6-99, 7-17, 7-77, 7-887** perfectly cover up to **70 % grey hair**. For shades **6-68 and 7-65** up to **50 %**.
- We recommend repeating the application of Palette Intensive Color Creme **every 4 weeks** as hair grows approximately 1 cm in this period.
- Palette Color Creme is **easy to remove from skin** with water and soap, or face water.

## IMPORTANT ADVICE

- Before application, please read the **SAFETY INSTRUCTIONS** below carefully.
- Do not use for 7-65 and 6-68 if you have dark color overload from several applications of dark tones.
- It is not recommended to wash your hair **24-48 h** prior to application.
- Avoid the product coming into contact with textiles and synthetic materials, for it will be hard to remove stains.
- Apply the product directly after mixing. Do not keep any unused mixture.
- **Shade 0-00**: Do not use on light blonde hair before or after having used a perm in order to avoid damage.
- **Shades 0-00, 9,5-1, 9,5-21, 10-1, 10-19, 10-2, 10-46, 12-21 and 12-46**: While coloring, do not cover the hair with a plastic or aluminium foil and avoid external warmth influence (e.g. hair-dryer, hair-drying cap or sauna). Do not use on hair that has previously been colored with red or dark shades.

## SAFETY INSTRUCTIONS

**! Hair colorants can cause severe allergic reactions.**

- Read and follow instructions. This product is not intended for use on persons under the age of 16. Temporary "black henna" tattoos may increase your risk of allergy.
- Do not color your hair if:
- you have a rash on your face or sensitive, irritated and damaged scalp,
  - you have ever experienced any reaction after coloring your hair,
  - you have experienced a reaction to a temporary "black henna" tattoo in the past.

- Contains: see folding box.
- Avoid contact with eyes.
  - Rinse eyes immediately if product comes into contact with them.
  - Do not use to dye eyelashes or eyebrows.
  - Rinse hair well after application.
  - Wear suitable gloves.
  - Keep out of reach of children.
- Keep the empty carton and the instruction leaflet in case you experience a reaction. To reduce your risk, follow these instructions.

## 1. ALLERGY ALERT TEST

Perform an allergy alert test 48 hours before each product use even if you have already used coloring products before. Perform the allergy alert test on an area of skin sized approximately 1 cm x 1 cm on the inside of the elbow.

**All shades except 0-00**: Apply a small amount of the Color Creme in a thin layer on the inside of the elbow with a cotton bud and leave uncovered for 45 minutes. Avoid contact with clothes. Close tube again carefully.

**Shade 0-00**: Take a quarter of a teaspoon of Blonde-Activator from the sachet and mix it in a cup with a level teaspoon of Color Creme using a plastic spoon. Stir well until thoroughly mixed. Apply a small amount of the mixture in a thin layer on the inside of the elbow with a cotton bud and leave uncovered for **45 minutes**. Avoid contact with clothes. Seal tube and sachet (with adhesive tape) carefully.

After 45 minutes, wash off the Color Creme thoroughly with lukewarm water. If any reaction occurs during the processing time or during the following 48 hours, you should rinse immediately and not use this colorant. This test represents an important precaution. However, be aware that even if an allergy alert test has been carried out you may still experience an allergic reaction when you color your hair. The allergy alert test is not a guarantee of avoiding future allergic reactions. Please consult a doctor if you have any doubts.

## 2. IF DURING COLORING YOU EXPERIENCE

- any stinging or burning and/or rash, rinse immediately and discontinue coloring your hair as this may be an indication of a more serious reaction. Do not color your hair again before consulting a doctor or seeking medical advice.
  - rapidly spreading skin rash, dizziness or faintness, shortness of breath and/or swelling of eyes/face, rinse immediately and seek immediate medical attention and contact the manufacturer.
3. IF AFTER COLORING OR ON THE FOLLOWING DAYS YOU EXPERIENCE problems such as skin or scalp itching, skin or scalp rash, swelling of eyes/face, blistering and/or skin or scalp weeping, seek immediate medical attention and contact the manufacturer.

## PRECAUTIONS

- This product contains ingredients which may cause severe eye irritation and possible permanent eye injury. If the developer or hair color mixture gets into your eye, flush immediately with a large amount of lukewarm water and seek medical advice.
- If you wear contact lenses during application and any product gets into your eye, remove the contact lens first, then flush immediately with a large amount of lukewarm water and seek medical advice.
- Do not inhale or ingest the product.
- Avoid unnecessary skin contact.
- Do not use if your hair has been colored with henna or metal dyes.
- Remove all metal objects such as clips and hair pins from hair before coloring and keep them away during coloring. Do not use metal tools.
- Keep developer away from heat and light. Do not mix this colorant with any other products. Do not keep any unused product. Do not leave the mixture in a closed bottle (bottle may expand or burst).
- Do not use on other than scalp hair, especially not on facial hair.

## DO YOU HAVE ANY QUESTIONS?

(Address of each country)  
(Consumer hotline/email of each country)

## TIPS FOR APPLICATION/INFORMATION

- Wait at least 2 weeks **before and after perming** before using a coloration and reduce the exposure time by 5-10 minutes.
- If your hair is
  - greyer (except for shades 1-0, 1-1, 3-0, 4-0, 4-5, 4-60, 5-0, 5-1, 6-0, 6-1, 6-80, 7-0, 7-1, 7-2, 8-0, 8-1, 9-0, 9-1 and 9-40) or **lighter** than recommended, **damaged or permed**: The result of the coloration can become more intensive than that shown on the picture of the packaging or on the shade chart.
  - **darker** than recommended: The result of the coloration can become less intensive than that on the picture of the packaging or on the shade chart.
  - **permed or bleached or has strands**: We recommend shortening the application time in the hair lengths by 5-10 minutes.
  - very dry or in poor condition: Apply the coloration mixture on the tips only for the last 5 minutes of the application time. Otherwise, this could result in a more intensive color.
- **Shades 3-65, 3-68, 4-88, 4-89, 5-57, 5-68, 6-65, 6-68, 6-88, 6-99, 7-17, 7-65, 7-77, 7-887**: In order to obtain a **100 % grey coverage**, mix half of the tube content of the fashionable shade with half of the tube content of a natural shade. Use a natural shade with the same color depth (**3-65 and 3-68 with 3-0**); (**4-88 and 4-89 with 4-0**); (**5-57 and 5-68 with 5-0**); (**6-65, 6-68, 6-88 and 6-99 with 6-0**); (**7-17, 7-65, 7-77 and 7-887 with 7-0**). Without mixing with a natural shade **3-65, 3-68, 4-88, 4-89, 5-57, 5-68, 6-65, 6-88, 6-99, 7-17, 7-77, 7-887** perfectly cover up to **70 % grey hair**. For shades **6-68 and 7-65** up to **50 %**.
- We recommend repeating the application of Palette Intensive Color Creme **every 4 weeks** as hair grows approximately 1 cm in this period.
- Palette Color Creme is **easy to remove from skin** with water and soap, or face water.

## IMPORTANT ADVICE

- Before application, please read the **SAFETY INSTRUCTIONS** below carefully.
- Do not use for 7-65 and 6-68 if you have dark color overload from several applications of dark tones.
- It is not recommended to wash your hair **24-48 h** prior to application.
- Avoid the product coming into contact with textiles and synthetic materials, for it will be hard to remove stains.
- Apply the product directly after mixing. Do not keep any unused mixture.
- **Shade 0-00**: Do not use on light blonde hair before or after having used a perm in order to avoid damage.
- **Shades 0-00, 9,5-1, 9,5-21, 10-1, 10-19, 10-2, 10-46, 12-21 and 12-46**: While coloring, do not cover the hair with a plastic or aluminium foil and avoid external warmth influence (e.g. hair-dryer, hair-drying cap or sauna). Do not use on hair that has previously been colored with red or dark shades.

## SAFETY INSTRUCTIONS

**! Hair colorants can cause severe allergic reactions.**

- Read and follow instructions. This product is not intended for use on persons under the age of 16. Temporary "black henna" tattoos may increase your risk of allergy.
- Do not color your hair if:
- you have a rash on your face or sensitive, irritated and damaged scalp,
  - you have ever experienced any reaction after coloring your hair,
  - you have experienced a reaction to a temporary "black henna" tattoo in the past.

- Contains: see folding box.
- Avoid contact with eyes.
  - Rinse eyes immediately if product comes into contact with them.
  - Do not use to dye eyelashes or eyebrows.
  - Rinse hair well after application.
  - Wear suitable gloves.
  - Keep out of reach of children.
- Keep the empty carton and the instruction leaflet in case you experience a reaction. To reduce your risk, follow these instructions.

## 1. ALLERGY ALERT TEST

Perform an allergy alert test 48 hours before each product use even if you have already used coloring products before. Perform the allergy alert test on an area of skin sized approximately 1 cm x 1 cm on the inside of the elbow.

**All shades except 0-00**: Apply a small amount of the Color Creme in a thin layer on the inside of the elbow with a cotton bud and leave uncovered for 45 minutes. Avoid contact with clothes. Close tube again carefully.

**Shade 0-00**: Take a quarter of a teaspoon of Blonde-Activator from the sachet and mix it in a cup with a level teaspoon of Color Creme using a plastic spoon. Stir well until thoroughly mixed. Apply a small amount of the mixture in a thin layer on the inside of the elbow with a cotton bud and leave uncovered for **45 minutes**. Avoid contact with clothes. Seal tube and sachet (with adhesive tape) carefully.

After 45 minutes, wash off the Color Creme thoroughly with lukewarm water. If any reaction occurs during the processing time or during the following 48 hours, you should rinse immediately and not use this colorant. This test represents an important precaution. However, be aware that even if an allergy alert test has been carried out you may still experience an allergic reaction when you color your hair. The allergy alert test is not a guarantee of avoiding future allergic reactions. Please consult a doctor if you have any doubts.

## 2. IF DURING COLORING YOU EXPERIENCE

- any stinging or burning and/or rash, rinse immediately and discontinue coloring your hair as this may be an indication of a more serious reaction. Do not color your hair again before consulting a doctor or seeking medical advice.
  - rapidly spreading skin rash, dizziness or faintness, shortness of breath and/or swelling of eyes/face, rinse immediately and seek immediate medical attention and contact the manufacturer.
3. IF AFTER COLORING OR ON THE FOLLOWING DAYS YOU EXPERIENCE problems such as skin or scalp itching, skin or scalp rash, swelling of eyes/face, blistering and/or skin or scalp weeping, seek immediate medical attention and contact the manufacturer.

## PRECAUTIONS

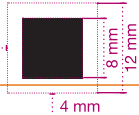
- This product contains ingredients which may cause severe eye irritation and possible permanent eye injury. If the developer or hair color mixture gets into your eye, flush immediately with a large amount of lukewarm water and seek medical advice.
- If you wear contact lenses during application and any product gets into your eye, remove the contact lens first, then flush immediately with a large amount of lukewarm water and seek medical advice.
- Do not inhale or ingest the product.
- Avoid unnecessary skin contact.
- Do not use if your hair has been colored with henna or metal dyes.
- Remove all metal objects such as clips and hair pins from hair before coloring and keep them away during coloring. Do not use metal tools.
- Keep developer away from heat and light. Do not mix this colorant with any other products. Do not keep any unused product. Do not leave the mixture in a closed bottle (bottle may expand or burst).
- Do not use on other than scalp hair, especially not on facial hair.

## DO YOU HAVE ANY QUESTIONS?

(Address of each country)  
(Consumer hotline/email of each country)

Schwarzkopf & Henkel  
a division of  
Henkel AG & Co. KGaA  
D-40191 Düsseldorf

40 mm



4 mm

die cut: 295 x 205 mm



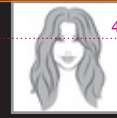
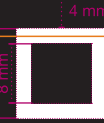
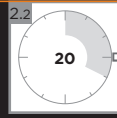
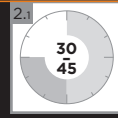
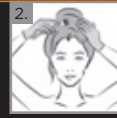
295 mm

Palette

INTENSIVE  
COLOR Creme

87 mm

**You will need:**  
Bowl  
+ brush, towel, clock, comb  
with widely spaced teeth  
**You will need:**  
Bowl  
+ brush, towel, clock, comb  
with widely spaced teeth  
**You will need:**  
Bowl  
+ brush, towel, clock, comb  
with widely spaced teeth



**In this box you find:**  
**In this box you find:**

Instruction leaflet  
Instruction leaflet  
Instruction leaflet

Pair of gloves  
Pair of gloves  
Pair of gloves

Bottle with developer lotion  
Bottle with developer lotion  
Bottle with developer lotion

Tube with color creme  
Tube with color creme  
Tube with color creme

Sachet with care mask  
Sachet with care mask  
Sachet with care mask

**IMPORTANT ADVICE:** Before application please read safety instructions on the back first. Conduct an allergy alert test. Apply the product directly after mixing.

**For bleached, highlighted and damaged hair, pay special attention to the Tips for Application!**

### Instruction Leaflet

#### 1. PREPARATION

- It is not recommended to wash your hair 24 – 48 h prior to application.
- Put on the enclosed pair of **gloves (1)**.
- Open the **developer bottle (2)** and pour out the contents into the non-metallic bowl.
  - Shade 0-00: Cut off the corner of the Blonde-Activator sachets and add the content to the developer lotion in the bowl.
  - For very short hair or regrowth application, **mix only half of the color cream tube and developer lotion** (for 0-00 use only one Blonde-Activator sachet).
  - If your hair is **longer than chin length**, we recommend the use of **two packs** of Palette Intensive Color Creme.
- Open the tube (3) and push the upper end of the cap through the membrane of the tube and add the **Color Creme (3)** to the developer lotion (2).
- Mix well (with a brush) until all components are thoroughly mixed.
- Cover your shoulders with a towel.
- For optimal result please use **immediately** and do not keep rests.

#### 2.1 TOTAL APPLICATION (FULL HEAD)

This application is recommended if

- you are coloring your hair permanently **for the first time**, or
- your previous hair color has **totally grown out**, i.e. **no regrowth is visible**.

- APPLY** the mixture on **dry hair**, starting at the nape of the neck with the help of a brush. Leave about 2 cm free at the **hair roots**. Apply the coloring mixture evenly throughout the hair. Then apply the mixture on the hair roots as well.
- LEAVE** the mixture for **30 minutes**. For lightening shades 0-00, 9.5-1, 9.5-21, 10-1, 10-19, 10-2, 10-46, 12-21, 12-46, 7-65 and 6-68, let the mixture work between **30 – 45 minutes** depending on the color result intensity you would like to achieve. (For permed or damaged hair see "Tips for Application".)

#### 2.2 REGROWTH APPLICATION

This application is necessary if

- your hair is already colored permanently and a **regrowth is visible**, or
- your **hair tips are darker or in poor condition**.

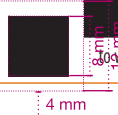
- APPLY** the mixture on **dry hair** with the help of a brush on the **regrowth area** only. Shade 0-00: Apply to the roots area **only**.
- LEAVE** the mixture on regrowth area for **20 minutes**. (For permed hair see "Tips for Application".) For lightening shades 0-00, 9.5-1, 9.5-21, 10-1, 10-19, 10-2, 10-46, 12-21 and 12-46 let the mixture work between **30 – 40 minutes (for shade 0-00: 30 – 45 minutes and for shades 7-65 and 6-68: 20 – 30 minutes)**, depending on the color result intensity you would like to achieve. (For permed hair see "Tips for Application".)
- DISTRIBUTE it evenly throughout** the hair using a comb with widely spaced teeth. Shade 0-00: Do not distribute it through the **whole length** of the hair, only apply to the roots.
- LEAVE** for further **10 minutes**. Lightening shades 9.5-1, 9.5-21, 10-1, 10-19, 10-2, 10-46, 12-21, 12-46: Leave for **5 minutes only**.

#### 3. RINSING

**RINSE** the hair well with warm water once the exposure time has finished **until water runs clear**.

#### 4. AFTER TREATMENT

Apply the Care Mask into wet hair. Allow to work for 2 minutes and rinse out thoroughly.



**IMPORTANT ADVICE:** Before application please read safety instructions on the back first. Conduct an allergy alert test. Apply the product directly after mixing.

**For bleached, highlighted and damaged hair, pay special attention to the Tips for Application!**

### Instruction Leaflet

#### 1. PREPARATION

- It is not recommended to wash your hair 24 – 48 h prior to application.
- Put on the enclosed pair of **gloves (1)**.
- Open the **developer bottle (2)** and pour out the contents into the non-metallic bowl.
  - Shade 0-00: Cut off the corner of the Blonde-Activator sachets and add the content to the developer lotion in the bowl.
  - For very short hair or regrowth application, **mix only half of the color cream tube and developer lotion** (for 0-00 use only one Blonde-Activator sachet).
  - If your hair is **longer than chin length**, we recommend the use of **two packs** of Palette Intensive Color Creme.
- Open the tube (3) and push the upper end of the cap through the membrane of the tube and add the **Color Creme (3)** to the developer lotion (2).
- Mix well (with a brush) until all components are thoroughly mixed.
- Cover your shoulders with a towel.
- For optimal result please use **immediately** and do not keep rests.

#### 2.1 TOTAL APPLICATION (FULL HEAD)

This application is recommended if

- you are coloring your hair permanently **for the first time**, or
- your previous hair color has **totally grown out**, i.e. **no regrowth is visible**.

- APPLY** the mixture on **dry hair**, starting at the nape of the neck with the help of a brush. Leave about 2 cm free at the **hair roots**. Apply the coloring mixture evenly throughout the hair. Then apply the mixture on the hair roots as well.
- LEAVE** the mixture for **30 minutes**. For lightening shades 0-00, 9.5-1, 9.5-21, 10-1, 10-19, 10-2, 10-46, 12-21, 12-46, 7-65 and 6-68, let the mixture work between **30 – 45 minutes** depending on the color result intensity you would like to achieve. (For permed or damaged hair see "Tips for Application".)

#### 2.2 REGROWTH APPLICATION

This application is necessary if

- your hair is already colored permanently and a **regrowth is visible**, or
- your **hair tips are darker or in poor condition**.

- APPLY** the mixture on **dry hair** with the help of a brush on the **regrowth area** only. Shade 0-00: Apply to the roots area **only**.
- LEAVE** the mixture on regrowth area for **20 minutes**. (For permed hair see "Tips for Application".) For lightening shades 0-00, 9.5-1, 9.5-21, 10-1, 10-19, 10-2, 10-46, 12-21 and 12-46 let the mixture work between **30 – 40 minutes (for shade 0-00: 30 – 45 minutes and for shades 7-65 and 6-68: 20 – 30 minutes)**, depending on the color result intensity you would like to achieve. (For permed hair see "Tips for Application".)
- DISTRIBUTE it evenly throughout** the hair using a comb with widely spaced teeth. Shade 0-00: Do not distribute it through the **whole length** of the hair, only apply to the roots.
- LEAVE** for further **10 minutes**. Lightening shades 9.5-1, 9.5-21, 10-1, 10-19, 10-2, 10-46, 12-21, 12-46: Leave for **5 minutes only**.

#### 3. RINSING

**RINSE** the hair well with warm water once the exposure time has finished **until water runs clear**.

#### 4. AFTER TREATMENT

Apply the Care Mask into wet hair. Allow to work for 2 minutes and rinse out thoroughly.

**IMPORTANT ADVICE:** Before application please read safety instructions on the back first. Conduct an allergy alert test. Apply the product directly after mixing.

**For bleached, highlighted and damaged hair, pay special attention to the Tips for Application!**

### Instruction Leaflet

#### 1. PREPARATION

- It is not recommended to wash your hair 24 – 48 h prior to application.
- Put on the enclosed pair of **gloves (1)**.
- Open the **developer bottle (2)** and pour out the contents into the non-metallic bowl.
  - Shade 0-00: Cut off the corner of the Blonde-Activator sachets and add the content to the developer lotion in the bowl.
  - For very short hair or regrowth application, **mix only half of the color cream tube and developer lotion** (for 0-00 use only one Blonde-Activator sachet).
  - If your hair is **longer than chin length**, we recommend the use of **two packs** of Palette Intensive Color Creme.
- Open the tube (3) and push the upper end of the cap through the membrane of the tube and add the **Color Creme (3)** to the developer lotion (2).
- Mix well (with a brush) until all components are thoroughly mixed.
- Cover your shoulders with a towel.
- For optimal result please use **immediately** and do not keep rests.

#### 2.1 TOTAL APPLICATION (FULL HEAD)

This application is recommended if

- you are coloring your hair permanently **for the first time**, or
- your previous hair color has **totally grown out**, i.e. **no regrowth is visible**.

- APPLY** the mixture on **dry hair**, starting at the nape of the neck with the help of a brush. Leave about 2 cm free at the **hair roots**. Apply the coloring mixture evenly throughout the hair. Then apply the mixture on the hair roots as well.
- LEAVE** the mixture for **30 minutes**. For lightening shades 0-00, 9.5-1, 9.5-21, 10-1, 10-19, 10-2, 10-46, 12-21, 12-46, 7-65 and 6-68, let the mixture work between **30 – 45 minutes** depending on the color result intensity you would like to achieve. (For permed or damaged hair see "Tips for Application".)

#### 2.2 REGROWTH APPLICATION

This application is necessary if

- your hair is already colored permanently and a **regrowth is visible**, or
- your **hair tips are darker or in poor condition**.

- APPLY** the mixture on **dry hair** with the help of a brush on the **regrowth area** only. Shade 0-00: Apply to the roots area **only**.
- LEAVE** the mixture on regrowth area for **20 minutes**. (For permed hair see "Tips for Application".) For lightening shades 0-00, 9.5-1, 9.5-21, 10-1, 10-19, 10-2, 10-46, 12-21 and 12-46 let the mixture work between **30 – 40 minutes (for shade 0-00: 30 – 45 minutes and for shades 7-65 and 6-68: 20 – 30 minutes)**, depending on the color result intensity you would like to achieve. (For permed hair see "Tips for Application".)
- DISTRIBUTE it evenly throughout** the hair using a comb with widely spaced teeth. Shade 0-00: Do not distribute it through the **whole length** of the hair, only apply to the roots.
- LEAVE** for further **10 minutes**. Lightening shades 9.5-1, 9.5-21, 10-1, 10-19, 10-2, 10-46, 12-21, 12-46: Leave for **5 minutes only**.

#### 3. RINSING

**RINSE** the hair well with warm water once the exposure time has finished **until water runs clear**.

#### 4. AFTER TREATMENT

Apply the Care Mask into wet hair. Allow to work for 2 minutes and rinse out thoroughly.

die cut: 295 x 205 mm

205 mm

295 mm

TIPS FOR APPLICATION/INFORMATION

TIPS FOR APPLICATION/INFORMATION

TIPS FOR APPLICATION/INFORMATION

- Wait at least 2 weeks before and after perming before using a coloration and reduce the exposure time by 5-10 minutes.
If your hair is greyer (except for shades 1-0, 1-1, 3-0, 4-0, 4-5, 4-60, 5-0, 5-1, 6-0, 6-1, 6-80, 7-0, 7-1, 7-2, 8-0, 8-1, 9-0, 9-1 and 9-40) or lighter than recommended, damaged or permed: The result of the coloration can become more intensive than that shown on the picture of the packaging or on the shade chart.
darker than recommended: The result of the coloration can become less intensive than that on the picture of the packaging or on the shade chart.
permed or bleached or has strands: We recommend shortening the application time in the hair lengths by 5-10 minutes.
very dry or in poor condition: Apply the coloration mixture on the tips only for the last 5 minutes of the application time. Otherwise, this could result in a more intensive color.
Shades 3-65, 3-68, 4-88, 4-89, 5-57, 5-68, 6-65, 6-68, 6-88, 6-99, 7-17, 7-65, 7-77, 7-887: In order to obtain a 100 % grey coverage, mix half of the tube content of the fashionable shade with half of the tube content of a natural shade. Use a natural shade with the same color depth (3-65 and 3-68 with 3-0); (4-88 and 4-89 with 4-0); (5-57 and 5-68 with 5-0); (6-65, 6-68, 6-88 and 6-99 with 6-0); (7-17, 7-65, 7-77 and 7-887 with 7-0). Without mixing with a natural shade 3-65, 3-68, 4-88, 4-89, 5-57, 5-68, 6-65, 6-88, 6-99, 7-17, 7-77, 7-887 perfectly cover up to 70 % grey hair. For shades 6-68 and 7-65 up to 50 %.
We recommend repeating the application of Palette Intensive Color Creme every 4 weeks as hair grows approximately 1 cm in this period.
Palette Color Creme is easy to remove from skin with water and soap, or face water.

- Wait at least 2 weeks before and after perming before using a coloration and reduce the exposure time by 5-10 minutes.
If your hair is greyer (except for shades 1-0, 1-1, 3-0, 4-0, 4-5, 4-60, 5-0, 5-1, 6-0, 6-1, 6-80, 7-0, 7-1, 7-2, 8-0, 8-1, 9-0, 9-1 and 9-40) or lighter than recommended, damaged or permed: The result of the coloration can become more intensive than that shown on the picture of the packaging or on the shade chart.
darker than recommended: The result of the coloration can become less intensive than that on the picture of the packaging or on the shade chart.
permed or bleached or has strands: We recommend shortening the application time in the hair lengths by 5-10 minutes.
very dry or in poor condition: Apply the coloration mixture on the tips only for the last 5 minutes of the application time. Otherwise, this could result in a more intensive color.
Shades 3-65, 3-68, 4-88, 4-89, 5-57, 5-68, 6-65, 6-68, 6-88, 6-99, 7-17, 7-65, 7-77, 7-887: In order to obtain a 100 % grey coverage, mix half of the tube content of the fashionable shade with half of the tube content of a natural shade. Use a natural shade with the same color depth (3-65 and 3-68 with 3-0); (4-88 and 4-89 with 4-0); (5-57 and 5-68 with 5-0); (6-65, 6-68, 6-88 and 6-99 with 6-0); (7-17, 7-65, 7-77 and 7-887 with 7-0). Without mixing with a natural shade 3-65, 3-68, 4-88, 4-89, 5-57, 5-68, 6-65, 6-88, 6-99, 7-17, 7-77, 7-887 perfectly cover up to 70 % grey hair. For shades 6-68 and 7-65 up to 50 %.
We recommend repeating the application of Palette Intensive Color Creme every 4 weeks as hair grows approximately 1 cm in this period.
Palette Color Creme is easy to remove from skin with water and soap, or face water.

- Wait at least 2 weeks before and after perming before using a coloration and reduce the exposure time by 5-10 minutes.
If your hair is greyer (except for shades 1-0, 1-1, 3-0, 4-0, 4-5, 4-60, 5-0, 5-1, 6-0, 6-1, 6-80, 7-0, 7-1, 7-2, 8-0, 8-1, 9-0, 9-1 and 9-40) or lighter than recommended, damaged or permed: The result of the coloration can become more intensive than that shown on the picture of the packaging or on the shade chart.
darker than recommended: The result of the coloration can become less intensive than that on the picture of the packaging or on the shade chart.
permed or bleached or has strands: We recommend shortening the application time in the hair lengths by 5-10 minutes.
very dry or in poor condition: Apply the coloration mixture on the tips only for the last 5 minutes of the application time. Otherwise, this could result in a more intensive color.
Shades 3-65, 3-68, 4-88, 4-89, 5-57, 5-68, 6-65, 6-68, 6-88, 6-99, 7-17, 7-65, 7-77, 7-887: In order to obtain a 100 % grey coverage, mix half of the tube content of the fashionable shade with half of the tube content of a natural shade. Use a natural shade with the same color depth (3-65 and 3-68 with 3-0); (4-88 and 4-89 with 4-0); (5-57 and 5-68 with 5-0); (6-65, 6-68, 6-88 and 6-99 with 6-0); (7-17, 7-65, 7-77 and 7-887 with 7-0). Without mixing with a natural shade 3-65, 3-68, 4-88, 4-89, 5-57, 5-68, 6-65, 6-88, 6-99, 7-17, 7-77, 7-887 perfectly cover up to 70 % grey hair. For shades 6-68 and 7-65 up to 50 %.
We recommend repeating the application of Palette Intensive Color Creme every 4 weeks as hair grows approximately 1 cm in this period.
Palette Color Creme is easy to remove from skin with water and soap, or face water.

IMPORTANT ADVICE

IMPORTANT ADVICE

IMPORTANT ADVICE

- Before application, please read the SAFETY INSTRUCTIONS below carefully.
Do not use for 7-65 and 6-68 if you have dark color overload from several applications of dark tones.
It is not recommended to wash your hair 24 - 48 h prior to application.
Avoid the product coming into contact with textiles and synthetic materials, for it will be hard to remove stains.
Apply the product directly after mixing. Do not keep any unused mixture.
Shade 0-00: Do not use on light blonde hair before or after having used a perm in order to avoid damage.
Shades 0-00, 9-5-1, 9-5-21, 10-1, 10-18, 10-2, 10-46, 12-21 and 12-46: While coloring, do not cover the hair with a plastic or aluminium foil and avoid external warmth influence (e.g. hair-dryer, hair-drying cap or sauna). Do not use on hair that has previously been colored with red or dark shades.

- Before application, please read the SAFETY INSTRUCTIONS below carefully.
Do not use for 7-65 and 6-68 if you have dark color overload from several applications of dark tones.
It is not recommended to wash your hair 24 - 48 h prior to application.
Avoid the product coming into contact with textiles and synthetic materials, for it will be hard to remove stains.
Apply the product directly after mixing. Do not keep any unused mixture.
Shade 0-00: Do not use on light blonde hair before or after having used a perm in order to avoid damage.
Shades 0-00, 9-5-1, 9-5-21, 10-1, 10-18, 10-2, 10-46, 12-21 and 12-46: While coloring, do not cover the hair with a plastic or aluminium foil and avoid external warmth influence (e.g. hair-dryer, hair-drying cap or sauna). Do not use on hair that has previously been colored with red or dark shades.

- Before application, please read the SAFETY INSTRUCTIONS below carefully.
Do not use for 7-65 and 6-68 if you have dark color overload from several applications of dark tones.
It is not recommended to wash your hair 24 - 48 h prior to application.
Avoid the product coming into contact with textiles and synthetic materials, for it will be hard to remove stains.
Apply the product directly after mixing. Do not keep any unused mixture.
Shade 0-00: Do not use on light blonde hair before or after having used a perm in order to avoid damage.
Shades 0-00, 9-5-1, 9-5-21, 10-1, 10-18, 10-2, 10-46, 12-21 and 12-46: While coloring, do not cover the hair with a plastic or aluminium foil and avoid external warmth influence (e.g. hair-dryer, hair-drying cap or sauna). Do not use on hair that has previously been colored with red or dark shades.

SAFETY INSTRUCTIONS

SAFETY INSTRUCTIONS

SAFETY INSTRUCTIONS

Hair colorants can cause severe allergic reactions.
Read and follow instructions. This product is not intended for use on persons under the age of 16. Temporary "black henna" tattoos may increase your risk of allergy.
Do not color your hair if:
you have a rash on your face or sensitive, irritated and damaged scalp,
you have ever experienced any reaction after coloring your hair,
you have experienced a reaction to a temporary "black henna" tattoo in the past.

Hair colorants can cause severe allergic reactions.
Read and follow instructions. This product is not intended for use on persons under the age of 16. Temporary "black henna" tattoos may increase your risk of allergy.
Do not color your hair if:
you have a rash on your face or sensitive, irritated and damaged scalp,
you have ever experienced any reaction after coloring your hair,
you have experienced a reaction to a temporary "black henna" tattoo in the past.

Hair colorants can cause severe allergic reactions.
Read and follow instructions. This product is not intended for use on persons under the age of 16. Temporary "black henna" tattoos may increase your risk of allergy.
Do not color your hair if:
you have a rash on your face or sensitive, irritated and damaged scalp,
you have ever experienced any reaction after coloring your hair,
you have experienced a reaction to a temporary "black henna" tattoo in the past.

Contains: see folding box.
Avoid contact with eyes.
Rinse eyes immediately if product comes into contact with them.
Do not use to dye eyelashes or eyebrows.
Rinse hair well after application.
Wear suitable gloves.
Keep out of reach of children.
Keep the empty carton and the instruction leaflet in case you experience a reaction. To reduce your risk, follow these instructions.

Contains: see folding box.
Avoid contact with eyes.
Rinse eyes immediately if product comes into contact with them.
Do not use to dye eyelashes or eyebrows.
Rinse hair well after application.
Wear suitable gloves.
Keep out of reach of children.
Keep the empty carton and the instruction leaflet in case you experience a reaction. To reduce your risk, follow these instructions.

Contains: see folding box.
Avoid contact with eyes.
Rinse eyes immediately if product comes into contact with them.
Do not use to dye eyelashes or eyebrows.
Rinse hair well after application.
Wear suitable gloves.
Keep out of reach of children.
Keep the empty carton and the instruction leaflet in case you experience a reaction. To reduce your risk, follow these instructions.

- 1. ALLERGY ALERT TEST
Perform an allergy alert test 48 hours before each product use even if you have already used coloring products before. Perform the allergy alert test on an area of skin sized approximately 1 cm x 1 cm on the inside of the elbow.
All shades except 0-00: Apply a small amount of the Color Creme in a thin layer on the inside of the elbow with a cotton bud and leave uncovered for 45 minutes. Avoid contact with clothes. Close tube again carefully.
Shade 0-00: Take a quarter of a teaspoon of Blonde-Activator from the sachet and mix it in a cup with a level teaspoon of Color Creme using a plastic spoon. Stir well until thoroughly mixed. Apply a small amount of the mixture in a thin layer on the inside of the elbow with a cotton bud and leave uncovered for 45 minutes. Avoid contact with clothes. Seal tube and sachet (with adhesive tape) carefully.
After 45 minutes, wash off the Color Creme thoroughly with lukewarm water. If any reaction occurs during the processing time or during the following 48 hours, you should rinse immediately and not use this colorant. This test represents an important precaution. However, be aware that even if an allergy alert test has been carried out you may still experience an allergic reaction when you color your hair. The allergy alert test is not a guarantee of avoiding future allergic reactions. Please consult a doctor if you have any doubts.
2. IF DURING COLORING YOU EXPERIENCE
any stinging or burning and/or rash, rinse immediately and discontinue coloring your hair as this may be an indication of a more serious reaction. Do not color your hair again before consulting a doctor or seeking medical advice.
rapidly spreading skin rash, dizziness or faintness, shortness of breath and/or swelling of eyes/face, rinse immediately and seek immediate medical attention and contact the manufacturer.
3. IF AFTER COLORING OR ON THE FOLLOWING DAYS YOU EXPERIENCE problems such as skin or scalp itching, skin or scalp rash, swelling of eyes/face, blistering and/or skin or scalp weeping, seek immediate medical attention and contact the manufacturer.

- 1. ALLERGY ALERT TEST
Perform an allergy alert test 48 hours before each product use even if you have already used coloring products before. Perform the allergy alert test on an area of skin sized approximately 1 cm x 1 cm on the inside of the elbow.
All shades except 0-00: Apply a small amount of the Color Creme in a thin layer on the inside of the elbow with a cotton bud and leave uncovered for 45 minutes. Avoid contact with clothes. Close tube again carefully.
Shade 0-00: Take a quarter of a teaspoon of Blonde-Activator from the sachet and mix it in a cup with a level teaspoon of Color Creme using a plastic spoon. Stir well until thoroughly mixed. Apply a small amount of the mixture in a thin layer on the inside of the elbow with a cotton bud and leave uncovered for 45 minutes. Avoid contact with clothes. Seal tube and sachet (with adhesive tape) carefully.
After 45 minutes, wash off the Color Creme thoroughly with lukewarm water. If any reaction occurs during the processing time or during the following 48 hours, you should rinse immediately and not use this colorant. This test represents an important precaution. However, be aware that even if an allergy alert test has been carried out you may still experience an allergic reaction when you color your hair. The allergy alert test is not a guarantee of avoiding future allergic reactions. Please consult a doctor if you have any doubts.
2. IF DURING COLORING YOU EXPERIENCE
any stinging or burning and/or rash, rinse immediately and discontinue coloring your hair as this may be an indication of a more serious reaction. Do not color your hair again before consulting a doctor or seeking medical advice.
rapidly spreading skin rash, dizziness or faintness, shortness of breath and/or swelling of eyes/face, rinse immediately and seek immediate medical attention and contact the manufacturer.
3. IF AFTER COLORING OR ON THE FOLLOWING DAYS YOU EXPERIENCE problems such as skin or scalp itching, skin or scalp rash, swelling of eyes/face, blistering and/or skin or scalp weeping, seek immediate medical attention and contact the manufacturer.

- 1. ALLERGY ALERT TEST
Perform an allergy alert test 48 hours before each product use even if you have already used coloring products before. Perform the allergy alert test on an area of skin sized approximately 1 cm x 1 cm on the inside of the elbow.
All shades except 0-00: Apply a small amount of the Color Creme in a thin layer on the inside of the elbow with a cotton bud and leave uncovered for 45 minutes. Avoid contact with clothes. Close tube again carefully.
Shade 0-00: Take a quarter of a teaspoon of Blonde-Activator from the sachet and mix it in a cup with a level teaspoon of Color Creme using a plastic spoon. Stir well until thoroughly mixed. Apply a small amount of the mixture in a thin layer on the inside of the elbow with a cotton bud and leave uncovered for 45 minutes. Avoid contact with clothes. Seal tube and sachet (with adhesive tape) carefully.
After 45 minutes, wash off the Color Creme thoroughly with lukewarm water. If any reaction occurs during the processing time or during the following 48 hours, you should rinse immediately and not use this colorant. This test represents an important precaution. However, be aware that even if an allergy alert test has been carried out you may still experience an allergic reaction when you color your hair. The allergy alert test is not a guarantee of avoiding future allergic reactions. Please consult a doctor if you have any doubts.
2. IF DURING COLORING YOU EXPERIENCE
any stinging or burning and/or rash, rinse immediately and discontinue coloring your hair as this may be an indication of a more serious reaction. Do not color your hair again before consulting a doctor or seeking medical advice.
rapidly spreading skin rash, dizziness or faintness, shortness of breath and/or swelling of eyes/face, rinse immediately and seek immediate medical attention and contact the manufacturer.
3. IF AFTER COLORING OR ON THE FOLLOWING DAYS YOU EXPERIENCE problems such as skin or scalp itching, skin or scalp rash, swelling of eyes/face, blistering and/or skin or scalp weeping, seek immediate medical attention and contact the manufacturer.

- PRECAUTIONS
This product contains ingredients which may cause severe eye irritation and possible permanent eye injury. If the developer or hair color mixture gets into your eye, flush immediately with a large amount of lukewarm water and seek medical advice.
If you wear contact lenses during application and any product gets into your eye, remove the contact lens first, then flush immediately with a large amount of lukewarm water and seek medical advice.
Do not inhale or ingest the product.
Avoid unnecessary skin contact.
Do not use if your hair has been colored with henna or metal dyes.
Remove all metal objects such as clips and hair pins from hair before coloring and keep them away during coloring. Do not use metal tools.
Keep developer away from heat and light. Do not mix this colorant with any other products. Do not keep any unused product. Do not leave the mixture in a closed bottle (bottle may expand or burst).
Do not use on other than scalp hair, especially not on facial hair.

- PRECAUTIONS
This product contains ingredients which may cause severe eye irritation and possible permanent eye injury. If the developer or hair color mixture gets into your eye, flush immediately with a large amount of lukewarm water and seek medical advice.
If you wear contact lenses during application and any product gets into your eye, remove the contact lens first, then flush immediately with a large amount of lukewarm water and seek medical advice.
Do not inhale or ingest the product.
Avoid unnecessary skin contact.
Do not use if your hair has been colored with henna or metal dyes.
Remove all metal objects such as clips and hair pins from hair before coloring and keep them away during coloring. Do not use metal tools.
Keep developer away from heat and light. Do not mix this colorant with any other products. Do not keep any unused product. Do not leave the mixture in a closed bottle (bottle may expand or burst).
Do not use on other than scalp hair, especially not on facial hair.

- PRECAUTIONS
This product contains ingredients which may cause severe eye irritation and possible permanent eye injury. If the developer or hair color mixture gets into your eye, flush immediately with a large amount of lukewarm water and seek medical advice.
If you wear contact lenses during application and any product gets into your eye, remove the contact lens first, then flush immediately with a large amount of lukewarm water and seek medical advice.
Do not inhale or ingest the product.
Avoid unnecessary skin contact.
Do not use if your hair has been colored with henna or metal dyes.
Remove all metal objects such as clips and hair pins from hair before coloring and keep them away during coloring. Do not use metal tools.
Keep developer away from heat and light. Do not mix this colorant with any other products. Do not keep any unused product. Do not leave the mixture in a closed bottle (bottle may expand or burst).
Do not use on other than scalp hair, especially not on facial hair.

DO YOU HAVE ANY QUESTIONS?

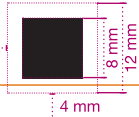
DO YOU HAVE ANY QUESTIONS?

DO YOU HAVE ANY QUESTIONS?

(Address of each country)
(Consumer hotline/email of each country)

(Address of each country)
(Consumer hotline/email of each country)

(Address of each country)
(Consumer hotline/email of each country)



Schwarzkopf & Henkel
a division of
Henkel AG & Co. KGaA
D-40191 Düsseldorf

205 mm

die cut: 295 x 205 mm

295 mm

Palette

INTENSIVE  
COLOR Creme

87 mm

**You will need:**  
Bowl + brush, towel, clock, comb with widely spaced teeth

**You will need:**  
Bowl + brush, towel, clock, comb with widely spaced teeth

**You will need:**  
Bowl + brush, towel, clock, comb with widely spaced teeth

**You will need:**  
Bowl + brush, towel, clock, comb with widely spaced teeth



**In this box you find:**  
**In this box you find:**  
**In this box you find:**

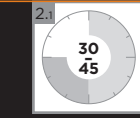
Instruction leaflet  
Instruction leaflet  
Instruction leaflet

Pair of gloves  
Pair of gloves  
Pair of gloves

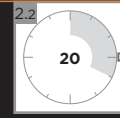
Bottle with developer lotion  
Bottle with developer lotion  
Bottle with developer lotion  
Bottle with developer lotion

Tube with color creme  
Tube with color creme  
Tube with color creme

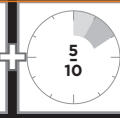
Sachet with care mask  
Sachet with care mask  
Sachet with care mask



Total application | Total application  
Total application | Total application



Regrowth | Regrowth  
Regrowth | Regrowth



On length | On length  
On length | On length



40 mm

**IMPORTANT ADVICE:** Before application please read safety instructions on the back first. Conduct an allergy alert test. Apply the product directly after mixing.

**For bleached, highlighted and damaged hair, pay special attention to the Tips for Application!**

### GB Instruction Leaflet

#### 1. PREPARATION

- It is not recommended to wash your hair 24 – 48 h prior to application.
- Put on the enclosed pair of **gloves (1)**.
- Open the **developer bottle (2)** and pour out the contents into the non-metallic bowl.
  - Shade 0-00: Cut off the corner of the Blonde-Activator sachets and add the content to the developer lotion in the bowl.
  - For very short hair or regrowth application, **mix only half of the color cream tube and developer lotion** (for 0-00 use only one Blonde-Activator sachet).
  - If your hair is **longer than chin length**, we recommend the use of **two packs** of Palette Intensive Color Creme.
- Open the tube (3) and push the upper end of the cap through the membrane of the tube and add the **Color Creme (3)** to the developer lotion (2).
- Mix well (with a brush) until all components are thoroughly mixed.
- Cover your shoulders with a towel.
- For optimal result please use **immediately** and do not keep rests.

#### 2.1 TOTAL APPLICATION (FULL HEAD)

This application is recommended if

- you are coloring your hair permanently **for the first time**, or
- your previous hair color has **totally grown out**, i. e. **no regrowth is visible**.

- APPLY** the mixture on **dry hair**, starting at the nape of the neck with the help of a brush. Leave about 2 cm free at the **hair roots**. Apply the coloring mixture evenly throughout the hair. Then apply the mixture on the hair roots as well.
- LEAVE** the mixture for **30 minutes**. For lightening shades 0-00, 9.5-1, 9.5-21, 10-1, 10-19, 10-2, 10-46, 12-21, 12-46, 7-65 and 6-68, let the mixture work between **30 – 45 minutes** depending on the color result intensity you would like to achieve. (For permed or damaged hair see "Tips for Application".)

#### 2.2 REGROWTH APPLICATION

This application is necessary if

- your hair is already colored permanently and a **regrowth is visible**, or
- your **hair tips are darker or in poor condition**.

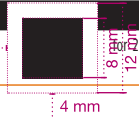
- APPLY** the mixture on **dry hair** with the help of a brush on the **regrowth area** only. Shade 0-00: Apply to the roots area **only**.
- LEAVE** the mixture on regrowth area for **20 minutes**. (For permed hair see "Tips for Application".) For lightening shades 0-00, 9.5-1, 9.5-21, 10-1, 10-19, 10-2, 10-46, 12-21 and 12-46 let the mixture work between **30 – 40 minutes (for shade 0-00: 30 – 45 minutes and for shades 7-65 and 6-68: 20 – 30 minutes)**, depending on the color result intensity you would like to achieve. (For permed hair see "Tips for Application".)
- DISTRIBUTE it evenly throughout** the hair using a comb with widely spaced teeth. Shade 0-00: Do not distribute it through the **whole length** of the hair, only apply to the roots.
- LEAVE** for further **10 minutes**. Lightening shades 9.5-1, 9.5-21, 10-1, 10-19, 10-2, 10-46, 12-21, 12-46: Leave for **5 minutes only**.

#### 3. RINSING

**RINSE** the hair well with warm water once the exposure time has finished **until water runs clear**.

#### 4. AFTER TREATMENT

Apply the Care Mask into wet hair. Allow to work for 2 minutes and rinse out thoroughly.



4 mm

**IMPORTANT ADVICE:** Before application please read safety instructions on the back first. Conduct an allergy alert test. Apply the product directly after mixing.

**For bleached, highlighted and damaged hair, pay special attention to the Tips for Application!**

### GB Instruction Leaflet

#### 1. PREPARATION

- It is not recommended to wash your hair 24 – 48 h prior to application.
- Put on the enclosed pair of **gloves (1)**.
- Open the **developer bottle (2)** and pour out the contents into the non-metallic bowl.
  - Shade 0-00: Cut off the corner of the Blonde-Activator sachets and add the content to the developer lotion in the bowl.
  - For very short hair or regrowth application, **mix only half of the color cream tube and developer lotion** (for 0-00 use only one Blonde-Activator sachet).
  - If your hair is **longer than chin length**, we recommend the use of **two packs** of Palette Intensive Color Creme.
- Open the tube (3) and push the upper end of the cap through the membrane of the tube and add the **Color Creme (3)** to the developer lotion (2).
- Mix well (with a brush) until all components are thoroughly mixed.
- Cover your shoulders with a towel.
- For optimal result please use **immediately** and do not keep rests.

#### 2.1 TOTAL APPLICATION (FULL HEAD)

This application is recommended if

- you are coloring your hair permanently **for the first time**, or
- your previous hair color has **totally grown out**, i. e. **no regrowth is visible**.

- APPLY** the mixture on **dry hair**, starting at the nape of the neck with the help of a brush. Leave about 2 cm free at the **hair roots**. Apply the coloring mixture evenly throughout the hair. Then apply the mixture on the hair roots as well.
- LEAVE** the mixture for **30 minutes**. For lightening shades 0-00, 9.5-1, 9.5-21, 10-1, 10-19, 10-2, 10-46, 12-21, 12-46, 7-65 and 6-68, let the mixture work between **30 – 45 minutes** depending on the color result intensity you would like to achieve. (For permed or damaged hair see "Tips for Application".)

#### 2.2 REGROWTH APPLICATION

This application is necessary if

- your hair is already colored permanently and a **regrowth is visible**, or
- your **hair tips are darker or in poor condition**.

- APPLY** the mixture on **dry hair** with the help of a brush on the **regrowth area** only. Shade 0-00: Apply to the roots area **only**.
- LEAVE** the mixture on regrowth area for **20 minutes**. (For permed hair see "Tips for Application".) For lightening shades 0-00, 9.5-1, 9.5-21, 10-1, 10-19, 10-2, 10-46, 12-21 and 12-46 let the mixture work between **30 – 40 minutes (for shade 0-00: 30 – 45 minutes and for shades 7-65 and 6-68: 20 – 30 minutes)**, depending on the color result intensity you would like to achieve. (For permed hair see "Tips for Application".)
- DISTRIBUTE it evenly throughout** the hair using a comb with widely spaced teeth. Shade 0-00: Do not distribute it through the **whole length** of the hair, only apply to the roots.
- LEAVE** for further **10 minutes**. Lightening shades 9.5-1, 9.5-21, 10-1, 10-19, 10-2, 10-46, 12-21, 12-46: Leave for **5 minutes only**.

#### 3. RINSING

**RINSE** the hair well with warm water once the exposure time has finished **until water runs clear**.

#### 4. AFTER TREATMENT

Apply the Care Mask into wet hair. Allow to work for 2 minutes and rinse out thoroughly.

**IMPORTANT ADVICE:** Before application please read safety instructions on the back first. Conduct an allergy alert test. Apply the product directly after mixing.

**For bleached, highlighted and damaged hair, pay special attention to the Tips for Application!**

### GB Instruction Leaflet

#### 1. PREPARATION

- It is not recommended to wash your hair 24 – 48 h prior to application.
- Put on the enclosed pair of **gloves (1)**.
- Open the **developer bottle (2)** and pour out the contents into the non-metallic bowl.
  - Shade 0-00: Cut off the corner of the Blonde-Activator sachets and add the content to the developer lotion in the bowl.
  - For very short hair or regrowth application, **mix only half of the color cream tube and developer lotion** (for 0-00 use only one Blonde-Activator sachet).
  - If your hair is **longer than chin length**, we recommend the use of **two packs** of Palette Intensive Color Creme.
- Open the tube (3) and push the upper end of the cap through the membrane of the tube and add the **Color Creme (3)** to the developer lotion (2).
- Mix well (with a brush) until all components are thoroughly mixed.
- Cover your shoulders with a towel.
- For optimal result please use **immediately** and do not keep rests.

#### 2.1 TOTAL APPLICATION (FULL HEAD)

This application is recommended if

- you are coloring your hair permanently **for the first time**, or
- your previous hair color has **totally grown out**, i. e. **no regrowth is visible**.

- APPLY** the mixture on **dry hair**, starting at the nape of the neck with the help of a brush. Leave about 2 cm free at the **hair roots**. Apply the coloring mixture evenly throughout the hair. Then apply the mixture on the hair roots as well.
- LEAVE** the mixture for **30 minutes**. For lightening shades 0-00, 9.5-1, 9.5-21, 10-1, 10-19, 10-2, 10-46, 12-21, 12-46, 7-65 and 6-68, let the mixture work between **30 – 45 minutes** depending on the color result intensity you would like to achieve. (For permed or damaged hair see "Tips for Application".)

#### 2.2 REGROWTH APPLICATION

This application is necessary if

- your hair is already colored permanently and a **regrowth is visible**, or
- your **hair tips are darker or in poor condition**.

- APPLY** the mixture on **dry hair** with the help of a brush on the **regrowth area** only. Shade 0-00: Apply to the roots area **only**.
- LEAVE** the mixture on regrowth area for **20 minutes**. (For permed hair see "Tips for Application".) For lightening shades 0-00, 9.5-1, 9.5-21, 10-1, 10-19, 10-2, 10-46, 12-21 and 12-46 let the mixture work between **30 – 40 minutes (for shade 0-00: 30 – 45 minutes and for shades 7-65 and 6-68: 20 – 30 minutes)**, depending on the color result intensity you would like to achieve. (For permed hair see "Tips for Application".)
- DISTRIBUTE it evenly throughout** the hair using a comb with widely spaced teeth. Shade 0-00: Do not distribute it through the **whole length** of the hair, only apply to the roots.
- LEAVE** for further **10 minutes**. Lightening shades 9.5-1, 9.5-21, 10-1, 10-19, 10-2, 10-46, 12-21, 12-46: Leave for **5 minutes only**.

#### 3. RINSING

**RINSE** the hair well with warm water once the exposure time has finished **until water runs clear**.

#### 4. AFTER TREATMENT

Apply the Care Mask into wet hair. Allow to work for 2 minutes and rinse out thoroughly.

**IMPORTANT ADVICE:** Before application please read safety instructions on the back first. Conduct an allergy alert test. Apply the product directly after mixing.

**For bleached, highlighted and damaged hair, pay special attention to the Tips for Application!**

### GB Instruction Leaflet

#### 1. PREPARATION

- It is not recommended to wash your hair 24 – 48 h prior to application.
- Put on the enclosed pair of **gloves (1)**.
- Open the **developer bottle (2)** and pour out the contents into the non-metallic bowl.
  - Shade 0-00: Cut off the corner of the Blonde-Activator sachets and add the content to the developer lotion in the bowl.
  - For very short hair or regrowth application, **mix only half of the color cream tube and developer lotion** (for 0-00 use only one Blonde-Activator sachet).
  - If your hair is **longer than chin length**, we recommend the use of **two packs** of Palette Intensive Color Creme.
- Open the tube (3) and push the upper end of the cap through the membrane of the tube and add the **Color Creme (3)** to the developer lotion (2).
- Mix well (with a brush) until all components are thoroughly mixed.
- Cover your shoulders with a towel.
- For optimal result please use **immediately** and do not keep rests.

#### 2.1 TOTAL APPLICATION (FULL HEAD)

This application is recommended if

- you are coloring your hair permanently **for the first time**, or
- your previous hair color has **totally grown out**, i. e. **no regrowth is visible**.

- APPLY** the mixture on **dry hair**, starting at the nape of the neck with the help of a brush. Leave about 2 cm free at the **hair roots**. Apply the coloring mixture evenly throughout the hair. Then apply the mixture on the hair roots as well.
- LEAVE** the mixture for **30 minutes**. For lightening shades 0-00, 9.5-1, 9.5-21, 10-1, 10-19, 10-2, 10-46, 12-21, 12-46, 7-65 and 6-68, let the mixture work between **30 – 45 minutes** depending on the color result intensity you would like to achieve. (For permed or damaged hair see "Tips for Application".)

#### 2.2 REGROWTH APPLICATION

This application is necessary if

- your hair is already colored permanently and a **regrowth is visible**, or
- your **hair tips are darker or in poor condition**.

- APPLY** the mixture on **dry hair** with the help of a brush on the **regrowth area** only. Shade 0-00: Apply to the roots area **only**.
- LEAVE** the mixture on regrowth area for **20 minutes**. (For permed hair see "Tips for Application".) For lightening shades 0-00, 9.5-1, 9.5-21, 10-1, 10-19, 10-2, 10-46, 12-21 and 12-46 let the mixture work between **30 – 40 minutes (for shade 0-00: 30 – 45 minutes and for shades 7-65 and 6-68: 20 – 30 minutes)**, depending on the color result intensity you would like to achieve. (For permed hair see "Tips for Application".)
- DISTRIBUTE it evenly throughout** the hair using a comb with widely spaced teeth. Shade 0-00: Do not distribute it through the **whole length** of the hair, only apply to the roots.
- LEAVE** for further **10 minutes**. Lightening shades 9.5-1, 9.5-21, 10-1, 10-19, 10-2, 10-46, 12-21, 12-46: Leave for **5 minutes only**.

#### 3. RINSING

**RINSE** the hair well with warm water once the exposure time has finished **until water runs clear**.

#### 4. AFTER TREATMENT

Apply the Care Mask into wet hair. Allow to work for 2 minutes and rinse out thoroughly.

die cut: 295 x 205 mm

205 mm

## TIPS FOR APPLICATION/INFORMATION

- Wait at least 2 weeks **before and after perming** before using a coloration and reduce the exposure time by 5-10 minutes.
- If your hair is
  - greyer (except for shades 1-0, 1-1, 3-0, 4-0, 4-5, 4-60, 5-0, 5-1, 6-0, 6-1, 6-80, 7-0, 7-1, 7-2, 8-0, 8-1, 9-0, 9-1 and 9-40) or **lighter** than recommended, **damaged or permed**: The result of the coloration can become more intensive than that shown on the picture of the packaging or on the shade chart.
  - **darker** than recommended: The result of the coloration can become less intensive than that on the picture of the packaging or on the shade chart.
  - **permed or bleached or has strands**: We recommend shortening the application time in the hair lengths by 5-10 minutes.
  - very dry or in poor condition: Apply the coloration mixture on the tips only for the last 5 minutes of the application time. Otherwise, this could result in a more intensive color.
- Shades 3-65, 3-68, 4-88, 4-89, 5-57, 5-68, 6-65, 6-68, 6-88, 6-99, 7-17, 7-65, 7-77, 7-887**: In order to obtain a **100 % grey coverage**, mix half of the tube content of the fashionable shade with half of the tube content of a natural shade. Use a natural shade with the same color depth (**3-65 and 3-68 with 3-0**); (**4-88 and 4-89 with 4-0**); (**5-57 and 5-68 with 5-0**); (**6-65, 6-68, 6-88 and 6-99 with 6-0**); (**7-17, 7-65, 7-77 and 7-887 with 7-0**). Without mixing with a natural shade **3-65, 3-68, 4-88, 4-89, 5-57, 5-68, 6-65, 6-68, 6-99, 7-17, 7-77, 7-887** perfectly cover up to **70 % grey hair**. For shades **6-68 and 7-65** up to **50 %**.
- We recommend repeating the application of Palette Intensive Color Creme **every 4 weeks** as hair grows approximately 1 cm in this period.
- Palette Color Creme is **easy to remove from skin** with water and soap, or face water.

## IMPORTANT ADVICE

- Before application, please read the **SAFETY INSTRUCTIONS** below carefully.
- Do not use for 7-65 and 6-68 if you have dark color overload from several applications of dark tones.
- It is not recommended to wash your hair **24 – 48 h** prior to application.
- Avoid the product coming into contact with textiles and synthetic materials, for it will be hard to remove stains.
- Apply the product directly after mixing. Do not keep any unused mixture.
- Shade 0-00**: Do not use on light blonde hair before or after having used a perm in order to avoid damage.
- Shades 0-00, 9-5-1, 9-5-21, 10-1, 10-19, 10-2, 10-46, 12-21 and 12-46**: While coloring, do not cover the hair with a plastic or aluminium foil and avoid external warmth influence (e.g. hair-dryer, hair-drying cap or sauna). Do not use on hair that has previously been colored with red or dark shades.

## SAFETY INSTRUCTIONS

- ! Hair colorants can cause severe allergic reactions.**
- Read and follow instructions. This product is not intended for use on persons under the age of 16. Temporary "black henna" tattoos may increase your risk of allergy.
- Do not color your hair if:
- you have a rash on your face or sensitive, irritated and damaged scalp,
  - you have ever experienced any reaction after coloring your hair,
  - you have experienced a reaction to a temporary "black henna" tattoo in the past.
- Contains: see folding box.
- Avoid contact with eyes.
  - Rinse eyes immediately if product comes into contact with them.
  - Do not use to dye eyelashes or eyebrows.
  - Rinse hair well after application.
  - Wear suitable gloves.
  - Keep out of reach of children.
- Keep the empty carton and the instruction leaflet in case you experience a reaction. To reduce your risk, follow these instructions.

## 1. ALLERGY ALERT TEST

- Perform an allergy alert test 48 hours before each product use even if you have already used coloring products before. Perform the allergy alert test on an area of skin sized approximately 1 cm x 1 cm on the inside of the elbow.
- All shades except 0-00**: Apply a small amount of the Color Creme in a thin layer on the inside of the elbow with a cotton bud and leave uncovered for 45 minutes. Avoid contact with clothes. Close tube again carefully.
- Shade 0-00**: Take a quarter of a teaspoon of Blonde-Activator from the sachet and mix it in a cup with a level teaspoon of Color Creme using a plastic spoon. Stir well until thoroughly mixed. Apply a small amount of the mixture in a thin layer on the inside of the **elbow** with a cotton bud and leave uncovered for **45 minutes**. Avoid contact with clothes. Seal tube and sachet (with adhesive tape) carefully.
- After 45 minutes, wash off the Color Creme thoroughly with lukewarm water. If any reaction occurs during the processing time or during the following 48 hours, you should rinse immediately and not use this colorant. This test represents an important precaution. However, be aware that even if an allergy alert test has been carried out you may still experience an allergic reaction when you color your hair. The allergy alert test is not a guarantee of avoiding future allergic reactions. Please consult a doctor if you have any doubts.

## 2. IF DURING COLORING YOU EXPERIENCE

- any stinging or burning and/or rash, rinse immediately and discontinue coloring your hair as this may be an indication of a more serious reaction. Do not color your hair again before consulting a doctor or seeking medical advice.
  - rapidly spreading skin rash, dizziness or faintness, shortness of breath and/or swelling of eyes/face, rinse immediately and seek immediate medical attention and contact the manufacturer.
3. IF AFTER COLORING OR ON THE FOLLOWING DAYS YOU EXPERIENCE problems such as skin or scalp itching, skin or scalp rash, swelling of eyes/face, blistering and/or skin or scalp weeping, seek immediate medical attention and contact the manufacturer.

## PRECAUTIONS

- This product contains ingredients which may cause severe eye irritation and possible permanent eye injury. If the developer or hair color mixture gets into your eye, flush immediately with a large amount of lukewarm water and seek medical advice.
- If you wear contact lenses during application and any product gets into your eye, remove the contact lens first, then flush immediately with a large amount of lukewarm water and seek medical advice.
- Do not inhale or ingest the product.
- Avoid unnecessary skin contact.
- Do not use if your hair has been colored with henna or metal dyes.
- Remove all metal objects such as clips and hair pins from hair before coloring and keep them away during coloring. Do not use metal tools.
- Keep developer away from heat and light. Do not mix this colorant with any other products. Do not keep any unused product. Do not leave the mixture in a closed bottle (bottle may expand or burst).
- Do not use on other than scalp hair, especially not on facial hair.

## DO YOU HAVE ANY QUESTIONS?

(Address of each country)  
(Consumer hotline/email of each country)

40 mm



4 mm

## TIPS FOR APPLICATION/INFORMATION

- Wait at least 2 weeks **before and after perming** before using a coloration and reduce the exposure time by 5-10 minutes.
- If your hair is
  - greyer (except for shades 1-0, 1-1, 3-0, 4-0, 4-5, 4-60, 5-0, 5-1, 6-0, 6-1, 6-80, 7-0, 7-1, 7-2, 8-0, 8-1, 9-0, 9-1 and 9-40) or **lighter** than recommended, **damaged or permed**: The result of the coloration can become more intensive than that shown on the picture of the packaging or on the shade chart.
  - **darker** than recommended: The result of the coloration can become less intensive than that on the picture of the packaging or on the shade chart.
  - **permed or bleached or has strands**: We recommend shortening the application time in the hair lengths by 5-10 minutes.
  - very dry or in poor condition: Apply the coloration mixture on the tips only for the last 5 minutes of the application time. Otherwise, this could result in a more intensive color.
- Shades 3-65, 3-68, 4-88, 4-89, 5-57, 5-68, 6-65, 6-68, 6-88, 6-99, 7-17, 7-65, 7-77, 7-887**: In order to obtain a **100 % grey coverage**, mix half of the tube content of the fashionable shade with half of the tube content of a natural shade. Use a natural shade with the same color depth (**3-65 and 3-68 with 3-0**); (**4-88 and 4-89 with 4-0**); (**5-57 and 5-68 with 5-0**); (**6-65, 6-68, 6-88 and 6-99 with 6-0**); (**7-17, 7-65, 7-77 and 7-887 with 7-0**). Without mixing with a natural shade **3-65, 3-68, 4-88, 4-89, 5-57, 5-68, 6-65, 6-68, 6-99, 7-17, 7-77, 7-887** perfectly cover up to **70 % grey hair**. For shades **6-68 and 7-65** up to **50 %**.
- We recommend repeating the application of Palette Intensive Color Creme **every 4 weeks** as hair grows approximately 1 cm in this period.
- Palette Color Creme is **easy to remove from skin** with water and soap, or face water.

## IMPORTANT ADVICE

- Before application, please read the **SAFETY INSTRUCTIONS** below carefully.
- Do not use for 7-65 and 6-68 if you have dark color overload from several applications of dark tones.
- It is not recommended to wash your hair **24 – 48 h** prior to application.
- Avoid the product coming into contact with textiles and synthetic materials, for it will be hard to remove stains.
- Apply the product directly after mixing. Do not keep any unused mixture.
- Shade 0-00**: Do not use on light blonde hair before or after having used a perm in order to avoid damage.
- Shades 0-00, 9-5-1, 9-5-21, 10-1, 10-19, 10-2, 10-46, 12-21 and 12-46**: While coloring, do not cover the hair with a plastic or aluminium foil and avoid external warmth influence (e.g. hair-dryer, hair-drying cap or sauna). Do not use on hair that has previously been colored with red or dark shades.

## SAFETY INSTRUCTIONS

- ! Hair colorants can cause severe allergic reactions.**
- Read and follow instructions. This product is not intended for use on persons under the age of 16. Temporary "black henna" tattoos may increase your risk of allergy.
- Do not color your hair if:
- you have a rash on your face or sensitive, irritated and damaged scalp,
  - you have ever experienced any reaction after coloring your hair,
  - you have experienced a reaction to a temporary "black henna" tattoo in the past.
- Contains: see folding box.
- Avoid contact with eyes.
  - Rinse eyes immediately if product comes into contact with them.
  - Do not use to dye eyelashes or eyebrows.
  - Rinse hair well after application.
  - Wear suitable gloves.
  - Keep out of reach of children.
- Keep the empty carton and the instruction leaflet in case you experience a reaction. To reduce your risk, follow these instructions.

## 1. ALLERGY ALERT TEST

- Perform an allergy alert test 48 hours before each product use even if you have already used coloring products before. Perform the allergy alert test on an area of skin sized approximately 1 cm x 1 cm on the inside of the elbow.
- All shades except 0-00**: Apply a small amount of the Color Creme in a thin layer on the inside of the elbow with a cotton bud and leave uncovered for 45 minutes. Avoid contact with clothes. Close tube again carefully.
- Shade 0-00**: Take a quarter of a teaspoon of Blonde-Activator from the sachet and mix it in a cup with a level teaspoon of Color Creme using a plastic spoon. Stir well until thoroughly mixed. Apply a small amount of the mixture in a thin layer on the inside of the **elbow** with a cotton bud and leave uncovered for **45 minutes**. Avoid contact with clothes. Seal tube and sachet (with adhesive tape) carefully.
- After 45 minutes, wash off the Color Creme thoroughly with lukewarm water. If any reaction occurs during the processing time or during the following 48 hours, you should rinse immediately and not use this colorant. This test represents an important precaution. However, be aware that even if an allergy alert test has been carried out you may still experience an allergic reaction when you color your hair. The allergy alert test is not a guarantee of avoiding future allergic reactions. Please consult a doctor if you have any doubts.

## 2. IF DURING COLORING YOU EXPERIENCE

- any stinging or burning and/or rash, rinse immediately and discontinue coloring your hair as this may be an indication of a more serious reaction. Do not color your hair again before consulting a doctor or seeking medical advice.
  - rapidly spreading skin rash, dizziness or faintness, shortness of breath and/or swelling of eyes/face, rinse immediately and seek immediate medical attention and contact the manufacturer.
3. IF AFTER COLORING OR ON THE FOLLOWING DAYS YOU EXPERIENCE problems such as skin or scalp itching, skin or scalp rash, swelling of eyes/face, blistering and/or skin or scalp weeping, seek immediate medical attention and contact the manufacturer.

## PRECAUTIONS

- This product contains ingredients which may cause severe eye irritation and possible permanent eye injury. If the developer or hair color mixture gets into your eye, flush immediately with a large amount of lukewarm water and seek medical advice.
- If you wear contact lenses during application and any product gets into your eye, remove the contact lens first, then flush immediately with a large amount of lukewarm water and seek medical advice.
- Do not inhale or ingest the product.
- Avoid unnecessary skin contact.
- Do not use if your hair has been colored with henna or metal dyes.
- Remove all metal objects such as clips and hair pins from hair before coloring and keep them away during coloring. Do not use metal tools.
- Keep developer away from heat and light. Do not mix this colorant with any other products. Do not keep any unused product. Do not leave the mixture in a closed bottle (bottle may expand or burst).
- Do not use on other than scalp hair, especially not on facial hair.

## DO YOU HAVE ANY QUESTIONS?

(Address of each country)  
(Consumer hotline/email of each country)

## TIPS FOR APPLICATION/INFORMATION

- Wait at least 2 weeks **before and after perming** before using a coloration and reduce the exposure time by 5-10 minutes.
- If your hair is
  - greyer (except for shades 1-0, 1-1, 3-0, 4-0, 4-5, 4-60, 5-0, 5-1, 6-0, 6-1, 6-80, 7-0, 7-1, 7-2, 8-0, 8-1, 9-0, 9-1 and 9-40) or **lighter** than recommended, **damaged or permed**: The result of the coloration can become more intensive than that shown on the picture of the packaging or on the shade chart.
  - **darker** than recommended: The result of the coloration can become less intensive than that on the picture of the packaging or on the shade chart.
  - **permed or bleached or has strands**: We recommend shortening the application time in the hair lengths by 5-10 minutes.
  - very dry or in poor condition: Apply the coloration mixture on the tips only for the last 5 minutes of the application time. Otherwise, this could result in a more intensive color.
- Shades 3-65, 3-68, 4-88, 4-89, 5-57, 5-68, 6-65, 6-68, 6-88, 6-99, 7-17, 7-65, 7-77, 7-887**: In order to obtain a **100 % grey coverage**, mix half of the tube content of the fashionable shade with half of the tube content of a natural shade. Use a natural shade with the same color depth (**3-65 and 3-68 with 3-0**); (**4-88 and 4-89 with 4-0**); (**5-57 and 5-68 with 5-0**); (**6-65, 6-68, 6-88 and 6-99 with 6-0**); (**7-17, 7-65, 7-77 and 7-887 with 7-0**). Without mixing with a natural shade **3-65, 3-68, 4-88, 4-89, 5-57, 5-68, 6-65, 6-68, 6-99, 7-17, 7-77, 7-887** perfectly cover up to **70 % grey hair**. For shades **6-68 and 7-65** up to **50 %**.
- We recommend repeating the application of Palette Intensive Color Creme **every 4 weeks** as hair grows approximately 1 cm in this period.
- Palette Color Creme is **easy to remove from skin** with water and soap, or face water.

## IMPORTANT ADVICE

- Before application, please read the **SAFETY INSTRUCTIONS** below carefully.
- Do not use for 7-65 and 6-68 if you have dark color overload from several applications of dark tones.
- It is not recommended to wash your hair **24 – 48 h** prior to application.
- Avoid the product coming into contact with textiles and synthetic materials, for it will be hard to remove stains.
- Apply the product directly after mixing. Do not keep any unused mixture.
- Shade 0-00**: Do not use on light blonde hair before or after having used a perm in order to avoid damage.
- Shades 0-00, 9-5-1, 9-5-21, 10-1, 10-19, 10-2, 10-46, 12-21 and 12-46**: While coloring, do not cover the hair with a plastic or aluminium foil and avoid external warmth influence (e.g. hair-dryer, hair-drying cap or sauna). Do not use on hair that has previously been colored with red or dark shades.

## SAFETY INSTRUCTIONS

- ! Hair colorants can cause severe allergic reactions.**
- Read and follow instructions. This product is not intended for use on persons under the age of 16. Temporary "black henna" tattoos may increase your risk of allergy.
- Do not color your hair if:
- you have a rash on your face or sensitive, irritated and damaged scalp,
  - you have ever experienced any reaction after coloring your hair,
  - you have experienced a reaction to a temporary "black henna" tattoo in the past.
- Contains: see folding box.
- Avoid contact with eyes.
  - Rinse eyes immediately if product comes into contact with them.
  - Do not use to dye eyelashes or eyebrows.
  - Rinse hair well after application.
  - Wear suitable gloves.
  - Keep out of reach of children.
- Keep the empty carton and the instruction leaflet in case you experience a reaction. To reduce your risk, follow these instructions.

## 1. ALLERGY ALERT TEST

- Perform an allergy alert test 48 hours before each product use even if you have already used coloring products before. Perform the allergy alert test on an area of skin sized approximately 1 cm x 1 cm on the inside of the elbow.
- All shades except 0-00**: Apply a small amount of the Color Creme in a thin layer on the inside of the elbow with a cotton bud and leave uncovered for 45 minutes. Avoid contact with clothes. Close tube again carefully.
- Shade 0-00**: Take a quarter of a teaspoon of Blonde-Activator from the sachet and mix it in a cup with a level teaspoon of Color Creme using a plastic spoon. Stir well until thoroughly mixed. Apply a small amount of the mixture in a thin layer on the inside of the **elbow** with a cotton bud and leave uncovered for **45 minutes**. Avoid contact with clothes. Seal tube and sachet (with adhesive tape) carefully.
- After 45 minutes, wash off the Color Creme thoroughly with lukewarm water. If any reaction occurs during the processing time or during the following 48 hours, you should rinse immediately and not use this colorant. This test represents an important precaution. However, be aware that even if an allergy alert test has been carried out you may still experience an allergic reaction when you color your hair. The allergy alert test is not a guarantee of avoiding future allergic reactions. Please consult a doctor if you have any doubts.

## 2. IF DURING COLORING YOU EXPERIENCE

- any stinging or burning and/or rash, rinse immediately and discontinue coloring your hair as this may be an indication of a more serious reaction. Do not color your hair again before consulting a doctor or seeking medical advice.
  - rapidly spreading skin rash, dizziness or faintness, shortness of breath and/or swelling of eyes/face, rinse immediately and seek immediate medical attention and contact the manufacturer.
3. IF AFTER COLORING OR ON THE FOLLOWING DAYS YOU EXPERIENCE problems such as skin or scalp itching, skin or scalp rash, swelling of eyes/face, blistering and/or skin or scalp weeping, seek immediate medical attention and contact the manufacturer.

## PRECAUTIONS

- This product contains ingredients which may cause severe eye irritation and possible permanent eye injury. If the developer or hair color mixture gets into your eye, flush immediately with a large amount of lukewarm water and seek medical advice.
- If you wear contact lenses during application and any product gets into your eye, remove the contact lens first, then flush immediately with a large amount of lukewarm water and seek medical advice.
- Do not inhale or ingest the product.
- Avoid unnecessary skin contact.
- Do not use if your hair has been colored with henna or metal dyes.
- Remove all metal objects such as clips and hair pins from hair before coloring and keep them away during coloring. Do not use metal tools.
- Keep developer away from heat and light. Do not mix this colorant with any other products. Do not keep any unused product. Do not leave the mixture in a closed bottle (bottle may expand or burst).
- Do not use on other than scalp hair, especially not on facial hair.

## DO YOU HAVE ANY QUESTIONS?

(Address of each country)  
(Consumer hotline/email of each country)

## TIPS FOR APPLICATION/INFORMATION

- Wait at least 2 weeks **before and after perming** before using a coloration and reduce the exposure time by 5-10 minutes.
- If your hair is
  - greyer (except for shades 1-0, 1-1, 3-0, 4-0, 4-5, 4-60, 5-0, 5-1, 6-0, 6-1, 6-80, 7-0, 7-1, 7-2, 8-0, 8-1, 9-0, 9-1 and 9-40) or **lighter** than recommended, **damaged or permed**: The result of the coloration can become more intensive than that shown on the picture of the packaging or on the shade chart.
  - **darker** than recommended: The result of the coloration can become less intensive than that on the picture of the packaging or on the shade chart.
  - **permed or bleached or has strands**: We recommend shortening the application time in the hair lengths by 5-10 minutes.
  - very dry or in poor condition: Apply the coloration mixture on the tips only for the last 5 minutes of the application time. Otherwise, this could result in a more intensive color.
- Shades 3-65, 3-68, 4-88, 4-89, 5-57, 5-68, 6-65, 6-68, 6-88, 6-99, 7-17, 7-65, 7-77, 7-887**: In order to obtain a **100 % grey coverage**, mix half of the tube content of the fashionable shade with half of the tube content of a natural shade. Use a natural shade with the same color depth (**3-65 and 3-68 with 3-0**); (**4-88 and 4-89 with 4-0**); (**5-57 and 5-68 with 5-0**); (**6-65, 6-68, 6-88 and 6-99 with 6-0**); (**7-17, 7-65, 7-77 and 7-887 with 7-0**). Without mixing with a natural shade **3-65, 3-68, 4-88, 4-89, 5-57, 5-68, 6-65, 6-68, 6-99, 7-17, 7-77, 7-887** perfectly cover up to **70 % grey hair**. For shades **6-68 and 7-65** up to **50 %**.
- We recommend repeating the application of Palette Intensive Color Creme **every 4 weeks** as hair grows approximately 1 cm in this period.
- Palette Color Creme is **easy to remove from skin** with water and soap, or face water.

## IMPORTANT ADVICE

- Before application, please read the **SAFETY INSTRUCTIONS** below carefully.
- Do not use for 7-65 and 6-68 if you have dark color overload from several applications of dark tones.
- It is not recommended to wash your hair **24 – 48 h** prior to application.
- Avoid the product coming into contact with textiles and synthetic materials, for it will be hard to remove stains.
- Apply the product directly after mixing. Do not keep any unused mixture.
- Shade 0-00**: Do not use on light blonde hair before or after having used a perm in order to avoid damage.
- Shades 0-00, 9-5-1, 9-5-21, 10-1, 10-19, 10-2, 10-46, 12-21 and 12-46**: While coloring, do not cover the hair with a plastic or aluminium foil and avoid external warmth influence (e.g. hair-dryer, hair-drying cap or sauna). Do not use on hair that has previously been colored with red or dark shades.

## SAFETY INSTRUCTIONS

- ! Hair colorants can cause severe allergic reactions.**
- Read and follow instructions. This product is not intended for use on persons under the age of 16. Temporary "black henna" tattoos may increase your risk of allergy.
- Do not color your hair if:
- you have a rash on your face or sensitive, irritated and damaged scalp,
  - you have ever experienced any reaction after coloring your hair,
  - you have experienced a reaction to a temporary "black henna" tattoo in the past.
- Contains: see folding box.
- Avoid contact with eyes.
  - Rinse eyes immediately if product comes into contact with them.
  - Do not use to dye eyelashes or eyebrows.
  - Rinse hair well after application.
  - Wear suitable gloves.
  - Keep out of reach of children.
- Keep the empty carton and the instruction leaflet in case you experience a reaction. To reduce your risk, follow these instructions.

## 1. ALLERGY ALERT TEST

- Perform an allergy alert test 48 hours before each product use even if you have already used coloring products before. Perform the allergy alert test on an area of skin sized approximately 1 cm x 1 cm on the inside of the elbow.
- All shades except 0-00**: Apply a small amount of the Color Creme in a thin layer on the inside of the elbow with a cotton bud and leave uncovered for 45 minutes. Avoid contact with clothes. Close tube again carefully.
- Shade 0-00**: Take a quarter of a teaspoon of Blonde-Activator from the sachet and mix it in a cup with a level teaspoon of Color Creme using a plastic spoon. Stir well until thoroughly mixed. Apply a small amount of the mixture in a thin layer on the inside of the **elbow** with a cotton bud and leave uncovered for **45 minutes**. Avoid contact with clothes. Seal tube and sachet (with adhesive tape) carefully.
- After 45 minutes, wash off the Color Creme thoroughly with lukewarm water. If any reaction occurs during the processing time or during the following 48 hours, you should rinse immediately and not use this colorant. This test represents an important precaution. However, be aware that even if an allergy alert test has been carried out you may still experience an allergic reaction when you color your hair. The allergy alert test is not a guarantee of avoiding future allergic reactions. Please consult a doctor if you have any doubts.

## 2. IF DURING COLORING YOU EXPERIENCE

- any stinging or burning and/or rash, rinse immediately and discontinue coloring your hair as this may be an indication of a more serious reaction. Do not color your hair again before consulting a doctor or seeking medical advice.
  - rapidly spreading skin rash, dizziness or faintness, shortness of breath and/or swelling of eyes/face, rinse immediately and seek immediate medical attention and contact the manufacturer.
3. IF AFTER COLORING OR ON THE FOLLOWING DAYS YOU EXPERIENCE problems such as skin or scalp itching, skin or scalp rash, swelling of eyes/face, blistering and/or skin or scalp weeping, seek immediate medical attention and contact the manufacturer.

## PRECAUTIONS

- This product contains ingredients which may cause severe eye irritation and possible permanent eye injury. If the developer or hair color mixture gets into your eye, flush immediately with a large amount of lukewarm water and seek medical advice.
- If you wear contact lenses during application and any product gets into your eye, remove the contact lens first, then flush immediately with a large amount of lukewarm water and seek medical advice.
- Do not inhale or ingest the product.
- Avoid unnecessary skin contact.
- Do not use if your hair has been colored with henna or metal dyes.
- Remove all metal objects such as clips and hair pins from hair before coloring and keep them away during coloring. Do not use metal tools.
- Keep developer away from heat and light. Do not mix this colorant with any other products. Do not keep any unused product. Do not leave the mixture in a closed bottle (bottle may expand or burst).
- Do not use on other than scalp hair, especially not on facial hair.

## DO YOU HAVE ANY QUESTIONS?

(Address of each country)  
(Consumer hotline/email of each country)

**Schwarzkopf & Henkel**  
a division of  
**Henkel AG & Co. KGaA**  
D-40191 Düsseldorf

XXXXXX