

**DELUXE BL | 1 LANGUAGE**

# Palette DELUXE



THIS COLORATION CONTAINS:



INSTRUCTION LEAFLET



PAIR OF GLOVES



APPLICATOR BOTTLE WITH DEVELOPER LOTION



TUBE WITH COLOR CREME



SACHET OF TREATMENT

## INSTRUCTION LEAFLET

**ATTENTION, PLEASE NOTE.** Before application, please read the **SAFETY INSTRUCTIONS** on the back carefully.

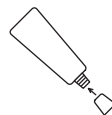
### 01 PREPARATION AND MIXING



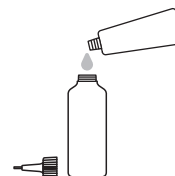
Before applying your colour, cover your clothing with an old towel or a cape and put on the gloves provided. Keep a watch nearby to check the developing time. Apply **PALETTE DELUXE Oil Care Color** on dry, unwashed hair.



1. Unscrew the cap of the applicator bottle.



2. Open the Color Creme by piercing the tube seal with the reverse of the cap. Press the **whole** content of the tube into the applicator bottle.



3. Close the bottle again and shake vigorously until all components are thoroughly mixed.



4. Break off the tip of the upper cap and proceed to the application.



**ATTENTION:** The color of the mixture of some shades changes during the application process. This has no impact on the color result.

### 02a APPLICATION (FIRST TIME)



30 min



This application is recommended if

- you are coloring your hair permanently **for the first time**, or
- your previous hair color has totally grown out, i.e. no re-growth can be seen.

Apply the prepared coloration mixture strand after strand directly from the applicator bottle on the dry, not pre-washed hair then distribute it evenly to ensure all hair is evenly covered. Allow the coloration mixture to work for **30 minutes**.

**For shades 11-11, 10-1, 10-91:** Allow the coloration mixture to work for **45 minutes**.

**For shades 8-01, 7-1, 7-3, 7-887, 5-68:** Allow the coloration mixture to work for **30-45 minutes**.

### 02b APPLICATION (RE-GROWTH)

2/3 to the re-growth area

20 min



1/3 to the rest hair length

10 min



This application is recommended if

- your hair is already colored permanently and a **re-growth is visible**, or
- your hair tips are darker or in poor condition.

Apply about **2/3 of the coloration mixture** only on the re-growth area.

For this, make a parting with the top of the applicator bottle and apply the mixture evenly along the parting into the roots with your fingertips (leave supplied gloves on). Repeat this procedure for the whole re-growth area. Allow the coloration mixture to work for **20 minutes**. Apply the rest of the mixture in the whole hair and allow it to work for a further **10 minutes**.

**For shades 10-1, 11-11, 10-91:** Apply to the roots area only and allow the coloration mixture to work for **35 minutes**. Apply the rest for max. **5-10 minutes** in the rest of the hair.

**For shades 8-01, 7-1, 7-3, 7-887, 5-68:** Apply to the roots area for **20-35 minutes** and apply the rest of the mixture into the whole hair and allow it to work for a further **10 minutes**.

### 03 RINSING



At the end of the application time, apply warm water to the hair and work into lather. Then rinse out thoroughly **until water runs clear**.

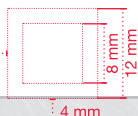
### 04 AFTER TREATMENT

2 min



As a subsequent care treatment, apply **Moisture Retention Treatment** into the **wet hair**. Allow to work for **2 minutes** and then rinse out thoroughly. The deep nourishing conditioner will leave your hair with smooth & supple hair feeling with silky shine.

40 mm



## IMPORTANT ADVICE

Before application, please read the **SAFETY INSTRUCTIONS** carefully.

Do the allergy alert test in any case, even if you have used a colorant product of this or another brand before. Please do not wash your hair prior to application. Apply the prepared coloration mixture **immediately**.

Do not leave the mixture in the screwed bottle; the bottle could blow up or burst. Do not keep any unused mixture for another application at a later time. Please make sure to mix well until you achieve **a complete and uniform mixture of the color creme and the developer lotion**. While coloring do not cover the hair with plastic or aluminum foil and avoid external warmth influence (e.g. hair-dryer, hairdrying cap, blow dryer or sauna).

**For shades 11-11, 10-1, 8-01, 7-1, 7-3, 7-887, 5-68, 10-91:** Do not use on hair that has previously been colored with red or dark shades.

## TIPS FOR APPLICATION

Do not allow the product to come into contact with clothing or jewelry as the accruing stains can normally not be removed.

We recommend to repeat the application every 4 weeks as the hair grows approximately 1 cm per month.

- For chin length or longer hair and for first application we recommend the use of 2 packs.
- Pre-washing or subsequent washing of your hair is not necessary, because the Color Creme already contains hair cleansing agents.
- Do not use two weeks before or after having used a perm. Otherwise, the color result could become too intensive or uneven.
- If you have permed, bleached hair or streaks, we recommend reducing the exposure time by 5–10 minutes.
- Palette Deluxe is easy to remove from skin with water and soap, or facial water.

## SAFETY INSTRUCTIONS



Hair colorants can cause severe allergic reactions.

Read and follow instructions.

This product is not intended for use on persons under the age of 16.

Temporary 'black henna' tattoos may increase your risk of allergy.

Do not colour your hair if:

- you have a rash on your face or sensitive, irritated and damaged scalp,
- you have ever experienced any reaction after colouring your hair,
- you have experienced a reaction to a temporary 'black henna' tattoo in the past.

Do not use to dye eyelashes or eyebrows. Contains: see folding box. Rinse hair well after application.

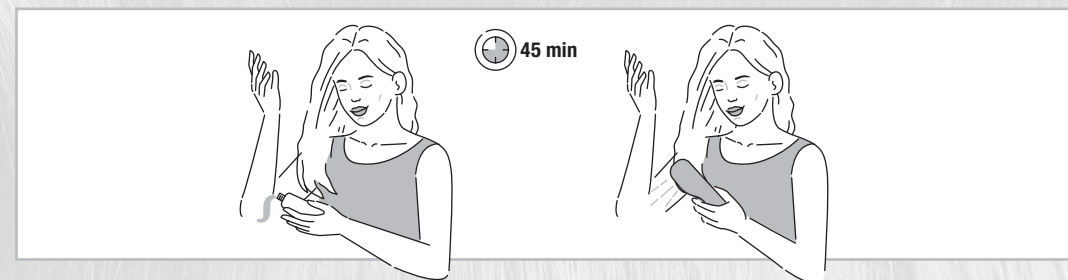
Avoid contact with eyes. Rinse immediately if product comes into contact with them. Wear suitable gloves. Keep out of reach of children. Keep the empty carton and the instruction leaflet in case you experience a reaction.

To reduce your risk follow these instructions.

## 1. ALLERGY ALERT TEST

Perform an allergy alert test 48 hours before each product use even if you have already used colouring products before. Perform the allergy alert test on an area of skin sized approximately 1 cm × 1 cm on the inside of the elbow. Apply a small amount of the Color Creme in a thin layer on the inside of the elbow with a cotton bud and leave uncovered for 45 minutes. Avoid contact with clothes. Close tube again carefully. After 45 minutes, wash off the Color Creme thoroughly with lukewarm water.

If any reaction occurs during the processing time or during the following 48 hours, you should rinse immediately and not use this colorant. This test represents an important precaution. However, be aware that even if an allergy alert test has been carried out you may still experience an allergic reaction when you colour your hair. The allergy alert test is not a guarantee of avoiding future allergic reactions. Please consult a doctor, if you have any doubts.



## 2. IF DURING COLOURING YOU EXPERIENCE

- any stinging or burning and/or rash, rinse immediately and discontinue colouring your hair as this may be an indication of a more serious reaction. Do not colour your hair again before consulting a doctor or seeking medical advice.
- rapidly spreading skin rash, dizziness or faintness, shortness of breath and/or swelling of eyes/face, rinse immediately and seek immediate medical attention and contact the manufacturer.

**3. IF AFTER COLOURING OR ON THE FOLLOWING DAYS YOU EXPERIENCE** problems such as skin or scalp itching, skin or scalp rash, swelling of eyes/face, blistering and/or skin or scalp weeping, seek immediate medical attention and contact the manufacturer.

## PRECAUTIONS

- This product contains ingredients which may cause severe eye irritation and possible permanent eye injury. If the developer or hair colour mixture gets into your eye, flush immediately with a large amount of lukewarm water and seek medical advice.
- If you wear contact lenses during application and any product gets into your eye, remove the contact lens first, then flush immediately with a large amount of lukewarm water and seek medical advice.
- Do not inhale or ingest the product.
- Avoid unnecessary skin contact.
- Do not use if your hair has been coloured with henna or metal dyes.
- Remove all metal objects such as clips and hair pins from hair before colouring and keep them away during colouring. Do not use metal tools.
- Keep developer away from heat and light. Do not mix this colorant with any other products. Do not keep any unused product. Do not leave the mixture in a closed bottle (bottle may expand or burst).



**DELUXE BL | 4 LANGUAGES**



# Palette DELUXE



THIS COLORATION CONTAINS:  
THIS COLORATION CONTAINS:  
THIS COLORATION CONTAINS:  
THIS COLORATION CONTAINS:



INSTRUCTION LEAFLET  
INSTRUCTION LEAFLET  
INSTRUCTION LEAFLET  
INSTRUCTION LEAFLET



PAIR OF GLOVES  
PAIR OF GLOVES  
PAIR OF GLOVES  
PAIR OF GLOVES



APPLICATOR BOTTLE WITH DEVELOPER LOTION  
APPLICATOR BOTTLE WITH DEVELOPER LOTION  
APPLICATOR BOTTLE WITH DEVELOPER LOTION  
APPLICATOR BOTTLE WITH DEVELOPER LOTION



TUBE WITH COLOR CREME  
TUBE WITH COLOR CREME  
TUBE WITH COLOR CREME  
TUBE WITH COLOR CREME



SACHET OF TREATMENT  
SACHET OF TREATMENT  
SACHET OF TREATMENT  
SACHET OF TREATMENT

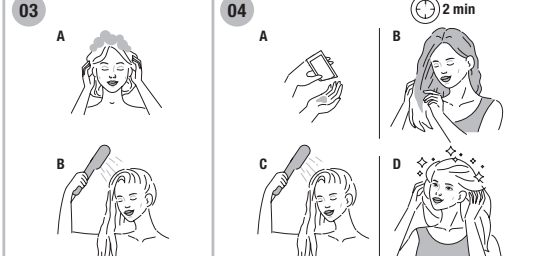
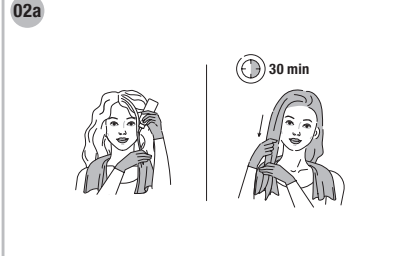
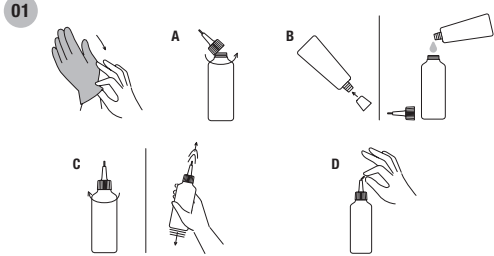
## INSTRUCTION LEAFLET

## INSTRUCTION LEAFLET

## INSTRUCTION LEAFLET

## INSTRUCTION LEAFLET

Ⓢ ATTENTION, PLEASE NOTE. Before application, please read the **SAFETY INSTRUCTIONS** on the back carefully. | Ⓢ ATTENTION, PLEASE NOTE. Before application, please read the **SAFETY INSTRUCTIONS** on the back carefully.  
Ⓢ ATTENTION, PLEASE NOTE. Before application, please read the **SAFETY INSTRUCTIONS** on the back carefully. | Ⓢ ATTENTION, PLEASE NOTE. Before application, please read the **SAFETY INSTRUCTIONS** on the back carefully.



### 01 PREPARATION AND MIXING

Before applying your colour, cover your clothing with an old towel or a cape and put on the gloves provided. Keep a watch nearby to check the developing time. Apply **PALETTE DELUXE Oil Care Color** on dry, unwashed hair.

- Unscrew the cap of the applicator bottle.
- Open the Color Creme by piercing the tube seal with the reverse of the cap. Press the **whole** content of the tube into the applicator bottle.
- Close the bottle again and shake vigorously until all components are thoroughly mixed.
- Break off the tip of the upper cap and proceed to the application.

**ATTENTION:** The color of the mixture of some shades changes during the application process. This has no impact on the color result.

### 02a APPLICATION (FIRST TIME)

This application is recommended if

- you are coloring your hair permanently **for the first time**, or
- your previous hair color has totally grown out, i.e. no re-growth can be seen.

Apply the prepared coloration mixture strand after strand directly from the applicator bottle on the dry, not pre-washed hair then distribute it evenly to ensure all hair is evenly covered. Allow the coloration mixture to work for **30 minutes**.

**For shades 11-11, 10-11, 10-91:** Allow the coloration mixture to work for **45 minutes**.

**For shades 8-01, 7-1, 7-3, 7-887, 5-68:** Allow the coloration mixture to work for **30-45 minutes**.

### 02b APPLICATION (RE-GROWTH)

This application is recommended if

- your hair is already colored permanently and a **re-growth is visible**, or
- your hair tips are darker or in poor condition.

Apply about **⅔** of the coloration mixture only on the re-growth area.

For this, make a parting with the top of the applicator bottle and apply the mixture evenly along the parting into the roots with your fingertips (leave supplied gloves on). Repeat this procedure for the whole re-growth area. Allow the coloration mixture to work for **20 minutes**.

Apply the rest of the mixture in the whole hair and allow it to work for a further **10 minutes**.

**For shades 10-1, 11-11, 10-91:** Apply to the roots area only and allow the coloration mixture to work for **35 minutes**. Apply the rest for max. **5-10 minutes** in the rest of the hair.

**For shades 8-01, 7-1, 7-3, 7-887, 5-68:** Apply to the roots area for **20-35 minutes** and apply the rest of the mixture into the whole hair and allow it to work for a further **10 minutes**.

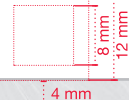
### 03 RINSING

At the end of the application time, apply warm water to the hair and work into lather. Then rinse out thoroughly **until water runs clear**.

### 04 AFTER TREATMENT

As a subsequent care treatment, apply **Moisture Retention Treatment** into the **wet hair**.

Allow to work for **2 minutes** and then rinse out thoroughly. The deep nourishing conditioner will leave your hair with smooth & supple hair feeling with silky shine.



### 01 PREPARATION AND MIXING

Before applying your colour, cover your clothing with an old towel or a cape and put on the gloves provided. Keep a watch nearby to check the developing time. Apply **PALETTE DELUXE Oil Care Color** on dry, unwashed hair.

- Unscrew the cap of the applicator bottle.
- Open the Color Creme by piercing the tube seal with the reverse of the cap. Press the **whole** content of the tube into the applicator bottle.
- Close the bottle again and shake vigorously until all components are thoroughly mixed.
- Break off the tip of the upper cap and proceed to the application.

**ATTENTION:** The color of the mixture of some shades changes during the application process. This has no impact on the color result.

### 02a APPLICATION (FIRST TIME)

This application is recommended if

- you are coloring your hair permanently **for the first time**, or
- your previous hair color has totally grown out, i.e. no re-growth can be seen.

Apply the prepared coloration mixture strand after strand directly from the applicator bottle on the dry, not pre-washed hair then distribute it evenly to ensure all hair is evenly covered. Allow the coloration mixture to work for **30 minutes**.

**For shades 11-11, 10-1, 10-91:** Allow the coloration mixture to work for **45 minutes**.

**For shades 8-01, 7-1, 7-3, 7-887, 5-68:** Allow the coloration mixture to work for **30-45 minutes**.

### 02b APPLICATION (RE-GROWTH)

This application is recommended if

- your hair is already colored permanently and a **re-growth is visible**, or
- your hair tips are darker or in poor condition.

Apply about **⅔** of the coloration mixture only on the re-growth area.

For this, make a parting with the top of the applicator bottle and apply the mixture evenly along the parting into the roots with your fingertips (leave supplied gloves on). Repeat this procedure for the whole re-growth area. Allow the coloration mixture to work for **20 minutes**.

Apply the rest of the mixture in the whole hair and allow it to work for a further **10 minutes**.

**For shades 10-1, 11-11, 10-91:** Apply to the roots area only and allow the coloration mixture to work for **35 minutes**. Apply the rest for max. **5-10 minutes** in the rest of the hair.

**For shades 8-01, 7-1, 7-3, 7-887, 5-68:** Apply to the roots area for **20-35 minutes** and apply the rest of the mixture into the whole hair and allow it to work for a further **10 minutes**.

### 03 RINSING

At the end of the application time, apply warm water to the hair and work into lather. Then rinse out thoroughly **until water runs clear**.

### 04 AFTER TREATMENT

As a subsequent care treatment, apply **Moisture Retention Treatment** into the **wet hair**.

Allow to work for **2 minutes** and then rinse out thoroughly. The deep nourishing conditioner will leave your hair with smooth & supple hair feeling with silky shine.

### 01 PREPARATION AND MIXING

Before applying your colour, cover your clothing with an old towel or a cape and put on the gloves provided. Keep a watch nearby to check the developing time. Apply **PALETTE DELUXE Oil Care Color** on dry, unwashed hair.

- Unscrew the cap of the applicator bottle.
- Open the Color Creme by piercing the tube seal with the reverse of the cap. Press the **whole** content of the tube into the applicator bottle.
- Close the bottle again and shake vigorously until all components are thoroughly mixed.
- Break off the tip of the upper cap and proceed to the application.

**ATTENTION:** The color of the mixture of some shades changes during the application process. This has no impact on the color result.

### 02a APPLICATION (FIRST TIME)

This application is recommended if

- you are coloring your hair permanently **for the first time**, or
- your previous hair color has totally grown out, i.e. no re-growth can be seen.

Apply the prepared coloration mixture strand after strand directly from the applicator bottle on the dry, not pre-washed hair then distribute it evenly to ensure all hair is evenly covered. Allow the coloration mixture to work for **30 minutes**.

**For shades 11-11, 10-1, 10-91:** Allow the coloration mixture to work for **45 minutes**.

**For shades 8-01, 7-1, 7-3, 7-887, 5-68:** Allow the coloration mixture to work for **30-45 minutes**.

### 02b APPLICATION (RE-GROWTH)

This application is recommended if

- your hair is already colored permanently and a **re-growth is visible**, or
- your hair tips are darker or in poor condition.

Apply about **⅔** of the coloration mixture only on the re-growth area.

For this, make a parting with the top of the applicator bottle and apply the mixture evenly along the parting into the roots with your fingertips (leave supplied gloves on). Repeat this procedure for the whole re-growth area. Allow the coloration mixture to work for **20 minutes**.

Apply the rest of the mixture in the whole hair and allow it to work for a further **10 minutes**.

**For shades 10-1, 11-11, 10-91:** Apply to the roots area only and allow the coloration mixture to work for **35 minutes**. Apply the rest for max. **5-10 minutes** in the rest of the hair.

**For shades 8-01, 7-1, 7-3, 7-887, 5-68:** Apply to the roots area for **20-35 minutes** and apply the rest of the mixture into the whole hair and allow it to work for a further **10 minutes**.

### 03 RINSING

At the end of the application time, apply warm water to the hair and work into lather. Then rinse out thoroughly **until water runs clear**.

### 04 AFTER TREATMENT

As a subsequent care treatment, apply **Moisture Retention Treatment** into the **wet hair**.

Allow to work for **2 minutes** and then rinse out thoroughly. The deep nourishing conditioner will leave your hair with smooth & supple hair feeling with silky shine.

### 01 PREPARATION AND MIXING

Before applying your colour, cover your clothing with an old towel or a cape and put on the gloves provided. Keep a watch nearby to check the developing time. Apply **PALETTE DELUXE Oil Care Color** on dry, unwashed hair.

- Unscrew the cap of the applicator bottle.
- Open the Color Creme by piercing the tube seal with the reverse of the cap. Press the **whole** content of the tube into the applicator bottle.
- Close the bottle again and shake vigorously until all components are thoroughly mixed.
- Break off the tip of the upper cap and proceed to the application.

**ATTENTION:** The color of the mixture of some shades changes during the application process. This has no impact on the color result.

### 02a APPLICATION (FIRST TIME)

This application is recommended if

- you are coloring your hair permanently **for the first time**, or
- your previous hair color has totally grown out, i.e. no re-growth can be seen.

Apply the prepared coloration mixture strand after strand directly from the applicator bottle on the dry, not pre-washed hair then distribute it evenly to ensure all hair is evenly covered. Allow the coloration mixture to work for **30 minutes**.

**For shades 11-11, 10-1, 10-91:** Allow the coloration mixture to work for **45 minutes**.

**For shades 8-01, 7-1, 7-3, 7-887, 5-68:** Allow the coloration mixture to work for **30-45 minutes**.

### 02b APPLICATION (RE-GROWTH)

This application is recommended if

- your hair is already colored permanently and a **re-growth is visible**, or
- your hair tips are darker or in poor condition.

Apply about **⅔** of the coloration mixture only on the re-growth area.

For this, make a parting with the top of the applicator bottle and apply the mixture evenly along the parting into the roots with your fingertips (leave supplied gloves on). Repeat this procedure for the whole re-growth area. Allow the coloration mixture to work for **20 minutes**.

Apply the rest of the mixture in the whole hair and allow it to work for a further **10 minutes**.

**For shades 10-1, 11-11, 10-91:** Apply to the roots area only and allow the coloration mixture to work for **35 minutes**. Apply the rest for max. **5-10 minutes** in the rest of the hair.

**For shades 8-01, 7-1, 7-3, 7-887, 5-68:** Apply to the roots area for **20-35 minutes** and apply the rest of the mixture into the whole hair and allow it to work for a further **10 minutes**.

### 03 RINSING

At the end of the application time, apply warm water to the hair and work into lather. Then rinse out thoroughly **until water runs clear**.

### 04 AFTER TREATMENT

As a subsequent care treatment, apply **Moisture Retention Treatment** into the **wet hair**.

Allow to work for **2 minutes** and then rinse out thoroughly. The deep nourishing conditioner will leave your hair with smooth & supple hair feeling with silky shine.





#### IMPORTANT ADVICE

Before application, please read the **SAFETY INSTRUCTIONS** carefully.

Do the allergy alert test in any case, even if you have used a colorant product of this or another brand before. Please do not wash your hair prior to application. Apply the prepared coloration mixture **immediately**.

Do not leave the mixture in the screwed bottle; the bottle could blow up or burst. Do not keep any unused mixture for another application at a later time. Please make sure to mix well until you achieve a **complete and uniform mixture of the color creme and the developer lotion**. While coloring do not cover the hair with plastic or aluminum foil and avoid external warmth influence (e.g. hair-dryer, hairdrying cap, blow dryer or sauna).

**For shades 11-11, 10-1, 8-01, 7-1, 7-3, 7-887, 5-68, 10-91:** Do not use on hair that has previously been colored with red or dark shades.

#### TIPS FOR APPLICATION

Do not allow the product to come into contact with clothing or jewelry as the accruing stains can normally not be removed.

We recommend to repeat the application every 4 weeks as the hair grows approximately 1 cm per month.

- For chin length or longer hair and for first application we recommend the use of 2 packs.
- Pre-washing or subsequent washing of your hair is not necessary, because the Color Creme already contains hair cleansing agents.
- Do not use two weeks before or after having used a perm. Otherwise, the color result could become too intensive or uneven.
- If you have permed, bleached hair or streaks, we recommend reducing the exposure time by 5–10 minutes.
- Palette Deluxe is easy to remove from skin with water and soap, or facial water.

#### SAFETY INSTRUCTIONS



Hair colorants can cause severe allergic reactions.

Read and follow instructions.

This product is not intended for use on persons under the age of 16.

Temporary 'black henna' tattoos may increase your risk of allergy.

Do not colour your hair if:

- you have a rash on your face or sensitive, irritated and damaged scalp,
- you have ever experienced any reaction after colouring your hair,
- you have experienced a reaction to a temporary 'black henna' tattoo in the past.

Do not use to dye eyelashes or eyebrows. Contains: see folding box. Rinse hair well after application.

Avoid contact with eyes. Rinse immediately if product comes into contact with them. Wear suitable gloves. Keep out of reach of children. Keep the empty carton and the instruction leaflet in case you experience a reaction.

To reduce your risk follow these instructions.

#### 1. ALLERGY ALERT TEST

Perform an allergy alert test 48 hours before each product use even if you have already used colouring products before. Perform the allergy alert test on an area of skin sized approximately 1cm × 1cm on the inside of the elbow. Apply a small amount of the Color Creme in a thin layer on the inside of the elbow with a cotton bud and leave uncovered for 45 minutes. Avoid contact with clothes. Close tube again carefully. After 45 minutes, wash off the Color Creme thoroughly with lukewarm water.

If any reaction occurs during the processing time or during the following 48 hours, you should rinse immediately and not use this colorant. This test represents an important precaution. However, be aware that even if an allergy alert test has been carried out you may still experience an allergic reaction when you colour your hair. The allergy alert test is not a guarantee of avoiding future allergic reactions. Please consult a doctor, if you have any doubts.

#### 2. IF DURING COLOURING YOU EXPERIENCE

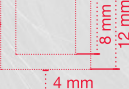
- any stinging or burning and/or rash, rinse immediately and discontinue colouring your hair as this may be an indication of a more serious reaction. Do not colour your hair again before consulting a doctor or seeking medical advice.
- rapidly spreading skin rash, dizziness or faintness, shortness of breath and/or swelling of eyes/face, rinse immediately and seek immediate medical attention and contact the manufacturer.

**3. IF AFTER COLOURING OR ON THE FOLLOWING DAYS YOU EXPERIENCE** problems such as skin or scalp itching, skin or scalp rash, swelling of eyes/face, blistering and/or skin or scalp weeping, seek immediate medical attention and contact the manufacturer.

#### PRECAUTIONS

- This product contains ingredients which may cause severe eye irritation and possible permanent eye injury. If the developer or hair colour mixture gets into your eye, flush immediately with a large amount of lukewarm water and seek medical advice.
- If you wear contact lenses during application and any product gets into your eye, remove the contact lens first, then flush immediately with a large amount of lukewarm water and seek medical advice.
- Do not inhale or ingest the product.
- Avoid unnecessary skin contact.
- Do not use if your hair has been coloured with henna or metal dyes.
- Remove all metal objects such as clips and hair pins from hair before colouring and keep them away during colouring. Do not use metal tools.
- Keep developer away from heat and light. Do not mix this colorant with any other products. Do not keep any unused product. Do not leave the mixture in a closed bottle (bottle may expand or burst).

40 mm



#### IMPORTANT ADVICE

Before application, please read the **SAFETY INSTRUCTIONS** carefully.

Do the allergy alert test in any case, even if you have used a colorant product of this or another brand before. Please do not wash your hair prior to application. Apply the prepared coloration mixture **immediately**.

Do not leave the mixture in the screwed bottle; the bottle could blow up or burst. Do not keep any unused mixture for another application at a later time. Please make sure to mix well until you achieve a **complete and uniform mixture of the color creme and the developer lotion**. While coloring do not cover the hair with plastic or aluminum foil and avoid external warmth influence (e.g. hair-dryer, hairdrying cap, blow dryer or sauna).

**For shades 11-11, 10-1, 8-01, 7-1, 7-3, 7-887, 5-68, 10-91:** Do not use on hair that has previously been colored with red or dark shades.

#### TIPS FOR APPLICATION

Do not allow the product to come into contact with clothing or jewelry as the accruing stains can normally not be removed.

We recommend to repeat the application every 4 weeks as the hair grows approximately 1 cm per month.

- For chin length or longer hair and for first application we recommend the use of 2 packs.
- Pre-washing or subsequent washing of your hair is not necessary, because the Color Creme already contains hair cleansing agents.
- Do not use two weeks before or after having used a perm. Otherwise, the color result could become too intensive or uneven.
- If you have permed, bleached hair or streaks, we recommend reducing the exposure time by 5–10 minutes.
- Palette Deluxe is easy to remove from skin with water and soap, or facial water.

#### SAFETY INSTRUCTIONS



Hair colorants can cause severe allergic reactions.

Read and follow instructions.

This product is not intended for use on persons under the age of 16.

Temporary 'black henna' tattoos may increase your risk of allergy.

Do not colour your hair if:

- you have a rash on your face or sensitive, irritated and damaged scalp,
- you have ever experienced any reaction after colouring your hair,
- you have experienced a reaction to a temporary 'black henna' tattoo in the past.

Do not use to dye eyelashes or eyebrows. Contains: see folding box. Rinse hair well after application.

Avoid contact with eyes. Rinse immediately if product comes into contact with them. Wear suitable gloves. Keep out of reach of children. Keep the empty carton and the instruction leaflet in case you experience a reaction.

To reduce your risk follow these instructions.

#### 1. ALLERGY ALERT TEST

Perform an allergy alert test 48 hours before each product use even if you have already used colouring products before. Perform the allergy alert test on an area of skin sized approximately 1cm × 1cm on the inside of the elbow. Apply a small amount of the Color Creme in a thin layer on the inside of the elbow with a cotton bud and leave uncovered for 45 minutes. Avoid contact with clothes. Close tube again carefully. After 45 minutes, wash off the Color Creme thoroughly with lukewarm water.

If any reaction occurs during the processing time or during the following 48 hours, you should rinse immediately and not use this colorant. This test represents an important precaution. However, be aware that even if an allergy alert test has been carried out you may still experience an allergic reaction when you colour your hair. The allergy alert test is not a guarantee of avoiding future allergic reactions. Please consult a doctor, if you have any doubts.

#### 2. IF DURING COLOURING YOU EXPERIENCE

- any stinging or burning and/or rash, rinse immediately and discontinue colouring your hair as this may be an indication of a more serious reaction. Do not colour your hair again before consulting a doctor or seeking medical advice.
- rapidly spreading skin rash, dizziness or faintness, shortness of breath and/or swelling of eyes/face, rinse immediately and seek immediate medical attention and contact the manufacturer.

**3. IF AFTER COLOURING OR ON THE FOLLOWING DAYS YOU EXPERIENCE** problems such as skin or scalp itching, skin or scalp rash, swelling of eyes/face, blistering and/or skin or scalp weeping, seek immediate medical attention and contact the manufacturer.

#### PRECAUTIONS

- This product contains ingredients which may cause severe eye irritation and possible permanent eye injury. If the developer or hair colour mixture gets into your eye, flush immediately with a large amount of lukewarm water and seek medical advice.
- If you wear contact lenses during application and any product gets into your eye, remove the contact lens first, then flush immediately with a large amount of lukewarm water and seek medical advice.
- Do not inhale or ingest the product.
- Avoid unnecessary skin contact.
- Do not use if your hair has been coloured with henna or metal dyes.
- Remove all metal objects such as clips and hair pins from hair before colouring and keep them away during colouring. Do not use metal tools.
- Keep developer away from heat and light. Do not mix this colorant with any other products. Do not keep any unused product. Do not leave the mixture in a closed bottle (bottle may expand or burst).

#### IMPORTANT ADVICE

Before application, please read the **SAFETY INSTRUCTIONS** carefully.

Do the allergy alert test in any case, even if you have used a colorant product of this or another brand before. Please do not wash your hair prior to application. Apply the prepared coloration mixture **immediately**.

Do not leave the mixture in the screwed bottle; the bottle could blow up or burst. Do not keep any unused mixture for another application at a later time. Please make sure to mix well until you achieve a **complete and uniform mixture of the color creme and the developer lotion**. While coloring do not cover the hair with plastic or aluminum foil and avoid external warmth influence (e.g. hair-dryer, hairdrying cap, blow dryer or sauna).

**For shades 11-11, 10-1, 8-01, 7-1, 7-3, 7-887, 5-68, 10-91:** Do not use on hair that has previously been colored with red or dark shades.

#### TIPS FOR APPLICATION

Do not allow the product to come into contact with clothing or jewelry as the accruing stains can normally not be removed.

We recommend to repeat the application every 4 weeks as the hair grows approximately 1 cm per month.

- For chin length or longer hair and for first application we recommend the use of 2 packs.
- Pre-washing or subsequent washing of your hair is not necessary, because the Color Creme already contains hair cleansing agents.
- Do not use two weeks before or after having used a perm. Otherwise, the color result could become too intensive or uneven.
- If you have permed, bleached hair or streaks, we recommend reducing the exposure time by 5–10 minutes.
- Palette Deluxe is easy to remove from skin with water and soap, or facial water.

#### SAFETY INSTRUCTIONS



Hair colorants can cause severe allergic reactions.

Read and follow instructions.

This product is not intended for use on persons under the age of 16.

Temporary 'black henna' tattoos may increase your risk of allergy.

Do not colour your hair if:

- you have a rash on your face or sensitive, irritated and damaged scalp,
- you have ever experienced any reaction after colouring your hair,
- you have experienced a reaction to a temporary 'black henna' tattoo in the past.

Do not use to dye eyelashes or eyebrows. Contains: see folding box. Rinse hair well after application.

Avoid contact with eyes. Rinse immediately if product comes into contact with them. Wear suitable gloves. Keep out of reach of children. Keep the empty carton and the instruction leaflet in case you experience a reaction.

To reduce your risk follow these instructions.

#### 1. ALLERGY ALERT TEST

Perform an allergy alert test 48 hours before each product use even if you have already used colouring products before. Perform the allergy alert test on an area of skin sized approximately 1cm × 1cm on the inside of the elbow. Apply a small amount of the Color Creme in a thin layer on the inside of the elbow with a cotton bud and leave uncovered for 45 minutes. Avoid contact with clothes. Close tube again carefully. After 45 minutes, wash off the Color Creme thoroughly with lukewarm water.

If any reaction occurs during the processing time or during the following 48 hours, you should rinse immediately and not use this colorant. This test represents an important precaution. However, be aware that even if an allergy alert test has been carried out you may still experience an allergic reaction when you colour your hair. The allergy alert test is not a guarantee of avoiding future allergic reactions. Please consult a doctor, if you have any doubts.

#### 2. IF DURING COLOURING YOU EXPERIENCE

- any stinging or burning and/or rash, rinse immediately and discontinue colouring your hair as this may be an indication of a more serious reaction. Do not colour your hair again before consulting a doctor or seeking medical advice.
- rapidly spreading skin rash, dizziness or faintness, shortness of breath and/or swelling of eyes/face, rinse immediately and seek immediate medical attention and contact the manufacturer.

**3. IF AFTER COLOURING OR ON THE FOLLOWING DAYS YOU EXPERIENCE** problems such as skin or scalp itching, skin or scalp rash, swelling of eyes/face, blistering and/or skin or scalp weeping, seek immediate medical attention and contact the manufacturer.

#### PRECAUTIONS

- This product contains ingredients which may cause severe eye irritation and possible permanent eye injury. If the developer or hair colour mixture gets into your eye, flush immediately with a large amount of lukewarm water and seek medical advice.
- If you wear contact lenses during application and any product gets into your eye, remove the contact lens first, then flush immediately with a large amount of lukewarm water and seek medical advice.
- Do not inhale or ingest the product.
- Avoid unnecessary skin contact.
- Do not use if your hair has been coloured with henna or metal dyes.
- Remove all metal objects such as clips and hair pins from hair before colouring and keep them away during colouring. Do not use metal tools.
- Keep developer away from heat and light. Do not mix this colorant with any other products. Do not keep any unused product. Do not leave the mixture in a closed bottle (bottle may expand or burst).

#### IMPORTANT ADVICE

Before application, please read the **SAFETY INSTRUCTIONS** carefully.

Do the allergy alert test in any case, even if you have used a colorant product of this or another brand before. Please do not wash your hair prior to application. Apply the prepared coloration mixture **immediately**.

Do not leave the mixture in the screwed bottle; the bottle could blow up or burst. Do not keep any unused mixture for another application at a later time. Please make sure to mix well until you achieve a **complete and uniform mixture of the color creme and the developer lotion**. While coloring do not cover the hair with plastic or aluminum foil and avoid external warmth influence (e.g. hair-dryer, hairdrying cap, blow dryer or sauna).

**For shades 11-11, 10-1, 8-01, 7-1, 7-3, 7-887, 5-68, 10-91:** Do not use on hair that has previously been colored with red or dark shades.

#### TIPS FOR APPLICATION

Do not allow the product to come into contact with clothing or jewelry as the accruing stains can normally not be removed.

We recommend to repeat the application every 4 weeks as the hair grows approximately 1 cm per month.

- For chin length or longer hair and for first application we recommend the use of 2 packs.
- Pre-washing or subsequent washing of your hair is not necessary, because the Color Creme already contains hair cleansing agents.
- Do not use two weeks before or after having used a perm. Otherwise, the color result could become too intensive or uneven.
- If you have permed, bleached hair or streaks, we recommend reducing the exposure time by 5–10 minutes.
- Palette Deluxe is easy to remove from skin with water and soap, or facial water.

#### SAFETY INSTRUCTIONS



Hair colorants can cause severe allergic reactions.

Read and follow instructions.

This product is not intended for use on persons under the age of 16.

Temporary 'black henna' tattoos may increase your risk of allergy.

Do not colour your hair if:

- you have a rash on your face or sensitive, irritated and damaged scalp,
  - you have ever experienced any reaction after colouring your hair,
  - you have experienced a reaction to a temporary 'black henna' tattoo in the past.
- Do not use to dye eyelashes or eyebrows. Contains: see folding box. Rinse hair well after application.

Avoid contact with eyes. Rinse immediately if product comes into contact with them. Wear suitable gloves. Keep out of reach of children. Keep the empty carton and the instruction leaflet in case you experience a reaction.

To reduce your risk follow these instructions.

#### 1. ALLERGY ALERT TEST

Perform an allergy alert test 48 hours before each product use even if you have already used colouring products before. Perform the allergy alert test on an area of skin sized approximately 1cm × 1cm on the inside of the elbow. Apply a small amount of the Color Creme in a thin layer on the inside of the elbow with a cotton bud and leave uncovered for 45 minutes. Avoid contact with clothes. Close tube again carefully. After 45 minutes, wash off the Color Creme thoroughly with lukewarm water.

If any reaction occurs during the processing time or during the following 48 hours, you should rinse immediately and not use this colorant. This test represents an important precaution. However, be aware that even if an allergy alert test has been carried out you may still experience an allergic reaction when you colour your hair. The allergy alert test is not a guarantee of avoiding future allergic reactions. Please consult a doctor, if you have any doubts.

#### 2. IF DURING COLOURING YOU EXPERIENCE

- any stinging or burning and/or rash, rinse immediately and discontinue colouring your hair as this may be an indication of a more serious reaction. Do not colour your hair again before consulting a doctor or seeking medical advice.
- rapidly spreading skin rash, dizziness or faintness, shortness of breath and/or swelling of eyes/face, rinse immediately and seek immediate medical attention and contact the manufacturer.

**3. IF AFTER COLOURING OR ON THE FOLLOWING DAYS YOU EXPERIENCE** problems such as skin or scalp itching, skin or scalp rash, swelling of eyes/face, blistering and/or skin or scalp weeping, seek immediate medical attention and contact the manufacturer.

#### PRECAUTIONS

- This product contains ingredients which may cause severe eye irritation and possible permanent eye injury. If the developer or hair colour mixture gets into your eye, flush immediately with a large amount of lukewarm water and seek medical advice.
- If you wear contact lenses during application and any product gets into your eye, remove the contact lens first, then flush immediately with a large amount of lukewarm water and seek medical advice.
- Do not inhale or ingest the product.
- Avoid unnecessary skin contact.
- Do not use if your hair has been coloured with henna or metal dyes.
- Remove all metal objects such as clips and hair pins from hair before colouring and keep them away during colouring. Do not use metal tools.
- Keep developer away from heat and light. Do not mix this colorant with any other products. Do not keep any unused product. Do not leave the mixture in a closed bottle (bottle may expand or burst).