

Oral-B®

SMART designed by BRAUN
1000-5000

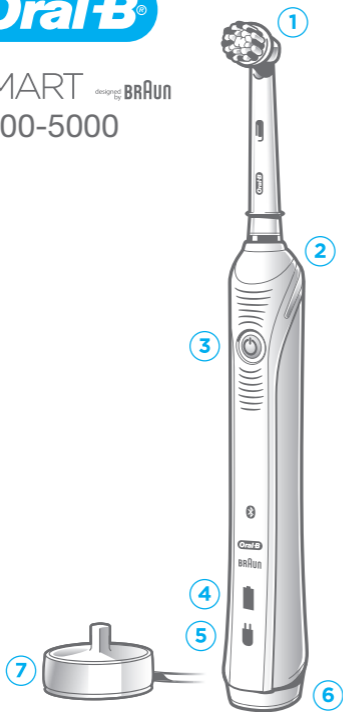


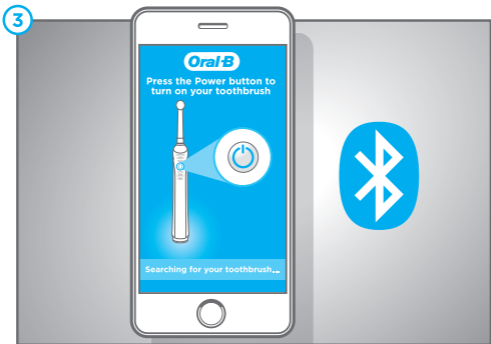
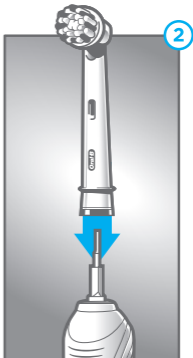
 **Bluetooth®**



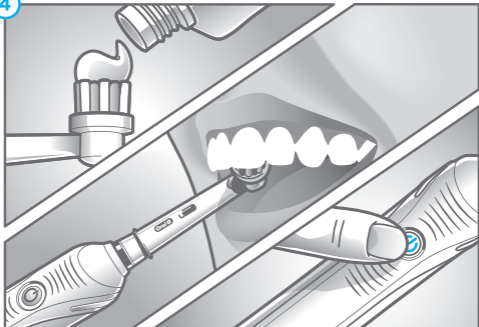
Oral-B®

SMART designed by BRAUN
1000-5000

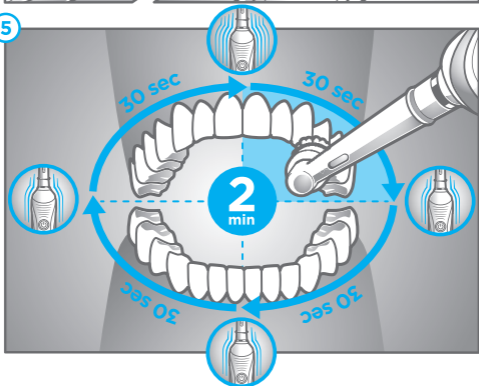


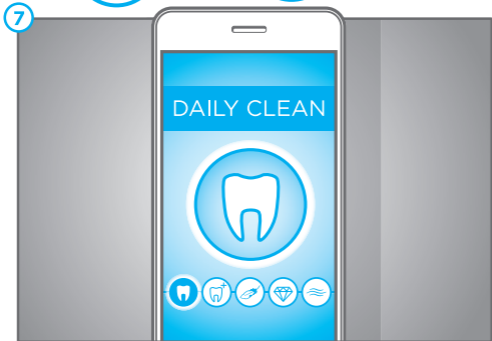
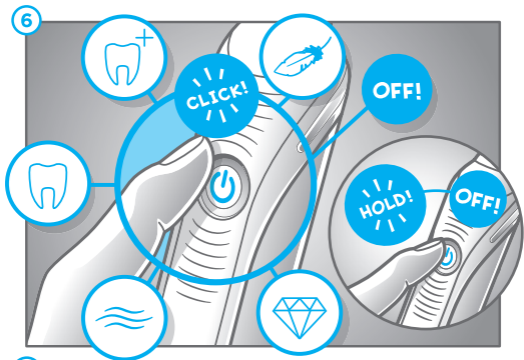


4

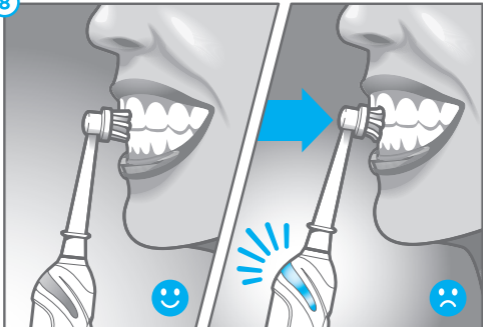


5

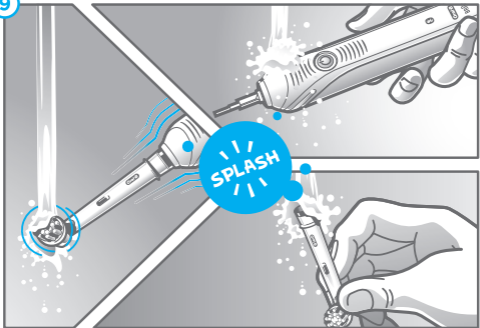




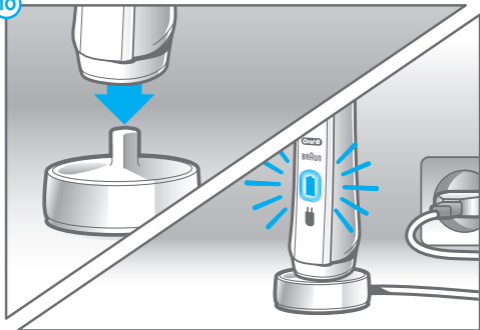
8



9



10



DE – Anleitung Schnellstart

Beschreibung

- ① Aufsteckbürste
- ② Visuelle Andruckkontrolle
- ③ Ein-/Ausschalter
(Moduswahl)
- ④ Ladekontrollleuchte
- ⑤ Niedrig-Ladekontrollleuchte
- ⑥ Handstück
- ⑦ Ladestation
(modellabhängig)

GB – Quick Start Guide

Description

- ① Brush head
- ② Pressure sensor light
- ③ On/off button (mode
selection)
- ④ Charge indicator light
- ⑤ Low charge indicator light
- ⑥ Handle
- ⑦ Charger / Charger base
(depending on model)

FR- Guide de démarrage rapide

Description

- ① Brossette
- ② Voyant du capteur de
pression
- ③ Bouton marche/arrêt
(sélection des modes)
- ④ Voyant indicateur de niveau
de charge
- ⑤ Voyant indicateur de
batterie déchargée
- ⑥ Corps de brosse
- ⑦ Chargeur/base de
chargement (suivant le
modèle)

ES – Guía rápida de inicio

Descripción

- ① Cabezal del cepillo
- ② Luz del sensor de presión
- ③ Botón de encendido/
apagado (selección
de modo)
- ④ Luz del indicador de carga
- ⑤ Luz indicadora de batería
baja
- ⑥ Mango
- ⑦ Cargador / Base de carga
(según modelo)



PT – Guia de Introdução

Descrição

- ① Cabeça de escovagem
- ② Luz do sensor de pressão
- ③ Botão ligar/desligar (seleção de modo)
- ④ Luz indicadora de carga
- ⑤ Luz indicadora de pouca carga
- ⑥ Cabo
- ⑦ Carregador / Base de carregamento (dependendo do modelo)

IT – Guida Rapida

Descrizione

- ① Testina per spazzolino
- ② Spia del sensore di pressione
- ③ Pulsante on/off (selezione modalità)
- ④ Indicatore del livello di ricarica
- ⑤ Indicatore del livello ricarica bassa
- ⑥ Manico
- ⑦ Caricatore / Base di ricarica (in base al modello)

NL – Gids voor snel opstarten

Omschrijving

- ① Opzetborstel
- ② Poetsdruk sensor lampje
- ③ Aan/uit schakelaar (poetsstandselectie)
- ④ Oplaad indicatielampje
- ⑤ Lage batterij indicatielampje
- ⑥ Handgreep
- ⑦ Oplader/Oplaadstation (afhankelijk van het model)

DK – Hurtigguide

Beskrivelse

- ① Børstehoved
- ② Tryksensorlys
- ③ Tænd-/slukknop (valg af funktion)
- ④ Indikatorlys for opladning
- ⑤ Indikatorlys for lavt batteri
- ⑥ Tandbørste
- ⑦ Oplader/laderdel (afhængigt af model)

NO – Hurtigguide

Beskrivelse

- ① Børstehode
- ② Trykksensorlys
- ③ På/av-knapp
(innstillingsvalg)
- ④ Ladeindikatorlys
- ⑤ Indikatorlys for lavt
batterinivå
- ⑥ Håndtak
- ⑦ Lader/Ladabase
(avhengig av modell)

SE – Snabbstartsguide

Beskrivning

- ① Borsthuvud
- ② Trykksensorlampa
- ③ På-/av-knapp (funktionsval)
- ④ Lampa, laddningsindikator
- ⑤ Indikatorlampa för låg
batterispänning
- ⑥ Tandborsthandtag
- ⑦ Laddare/laddningsstation
(beroende på modell)

FI – Pikaopas

Kuvaus

- ① Harjaspää
- ② Paineentunnistimen
merkkivalo
- ③ Virtapainike (harjaustilan
valitsin)
- ④ Latauksen merkkivalo
- ⑤ Alhaisen latauksen
merkkivalo
- ⑥ Runko-osa
- ⑦ Laturi / latausalusta
(mallista riippuen)

GR – Οδηγός γρήγορης έναρξης

Περιγραφή

- ① Κεφαλή βουρτσίσματος
- ② Φωτεινή ένδειξη αισθητήρα
πίεσης
- ③ Κουμπί ενεργοποίησης/
απενεργοποίησης (επιλογή
προγράμματος)
- ④ Φωτεινή ένδειξη φόρτισης
- ⑤ Φωτεινή ένδειξη χαμηλής
μπαταρίας
- ⑥ Λαβή οδοντόβουρτσας
- ⑦ Φορτιστής / Βάση φορτιστή
(αναλόγως το μοντέλο)



DE	AT	00 800 27 28 64 63
CH		08 44 - 88 40 10
GB		0 800 731 1792
IE		1 800 509 448
FR		0 800 944 803 (service et appel gratuits)
BE		0 800 14 592
LU		800 21172
ES		900 814 208
PT		808 20 00 33
IT		800 124 600
NL		0800-4 45 53 88
DK		70 15 00 13
NO		22 63 00 93
SE		020 - 21 33 21
FI		020 377 877
GR		800 801 3457
ZA		Consumer Care Line 0860 112 188 (Sharecall charged at local rates)

www.oralb-blendamed.de
www.oralb.com
www.braun.com
www.service.braun.com

Braun GmbH
Frankfurter Straße 145
61476 Kronberg/Germany

Center Type 3724 /
Charger Type 3757
Handle Type 3767

91470059/IX-17
D/GB/F/E/P/I/NL/DK/N/S/FIN/GR