




Mandatory Safety


- Never use the product for the proposes other than listed on this manual.
- Read the instruction manual before using this product.
- Remove all packaging before use.
- Use only the type-C USB in the package to avoid damage to the product.
- When unplugging the USB, set your hand on the machine instead of pulling the cord directly.
- If the unit will not be used for an extended period or needs to be relocated, take out the oil bottle and clean the unit/bottle before storage.
- Avoid moving the unit while in use.
- This product is not a toy, keep out of reach of children.
- The precautions listed in this manual are to ensure safe and proper use of this product by the user and avoid any danger or loss that might occur to the user or others.
- "WARNING" contains important safety instructions. Be sure to follow these instructions.


Warning

- 


- This device is not intended for use by persons with reduced physical or cognitive capacities without the necessary experience or knowledge, unless they have been trained to use the device correctly by a person responsible for their safety and have understood the risks involved.
- 

- Stop using the product immediately and unplug the USB once it smoke, smell, unusual sounds or other anomalies occur.
- 


- Do not modify, fix or dismantle this product, as fire, electric shock or damage may occur.
- 

- When the product is at the end of its life, we recommend disposal at a collection point for the recycling of electrical and electronic equipment, rather than with household waste.
- 

- When the product remains unused for a long period of time, the unit must be unplugged the USB. Otherwise, electric shock malfunction may occur.
 - Make sure to recharge the device once within 3 months, keep the device maintain a certain amount of battery or it might affect the battery quality.
 - Keep the product away from the heat sources, high-pressure places and do not break or damage the product.

- 

- Make sure to use the device in below temperature range, otherwise it might hurt the battery life.
Charging: 15° - 45°C Working: 0° - 60°C
 - This product must be disconnected from the power sources before cleaning and maintenance.
 - Please avoid dripping the essential oil onto the exterior of the product or onto furniture.If essential oil dripping accidentally occurs, wipe off immediately to avoid discoloration of the exterior of the product or the furniture.
 - This product is not medical equipment. Directly inhaling the aroma mist from the spout is not recommended.
 - If you have any special physical conditions, such as pregnancy, lung failure, cancer, epilepsy, or other illnesses, please consult your doctor before using essential oils. Stop using the product and open the windows for ventilation if you start to feel uncomfortable.
 - Essential oils are highly concentrated and should always be handled with care, including the amount for each use.

- 

- Do not handle the main unit and outlet with wet hands, or let water or other liquids spill onto them, as this may result in electric shocks.
 - This product is not intended for use by persons (including children) with reduced physical, sensory or mental capabilities, or lack of experience and knowledge, unless they have been given supervision or instruction concerning use of the product by a person responsible for their safety.
 - Do not let children use this product. Keep out of reach of children as electric shock and injury may occur. Children should be properly supervised to ensure that they will not play with this product.
 - To avoid fire, electric shock, injury or damage, do not place the product in the areas listed below :
 - Environments exposed to direct sunlight to high temperatures and keep away from sources of ignition.
 - Pressurized objects and combustibles.
 - Not recommended to use base notes oil to run the machine, especially the Vetiver and Sandalwood.

Product Dimensions

Product Name:	Bamboo (Rechargeable)	Main unit weight:	330g
Model code:	BLP-002R	Coverage Area:	Up to 80m²
Product Size:	Ø80mm(L) x 84.2mm(W) x 155.6mm(H)	Environment:	Indoor
Material:	PP+Aluminum	Run Time:	1 /2 /5 hours
Power:	5V  1A 5W	Design:	USA
Lithium Battery:	3.6V  2500mAh 9Wh	Made in China	
		Manufacturer:	Bloomy Lotus LLC

Product Warranty

Thank you for your purchase. The products carry a limited 12-month warranty on manufacturer defects. Please contact your local distributor for after sales enquiries or product maintenance.

Proof of purchase will be required. Warranty does NOT cover:

- Damage of accessories due to often use /depreciation
- Damage due to abuse or improper use of the product
- Damage of non-household use (i.e natural disaster, commercial use)
- Fail to provide any proof of product damage & purchase

We reserves the right for final decision of free product maintenance provided within mentioning period and any other conditions.

Product name: _____

Model no.: _____

Batch no: _____

Point of purchase: _____

Date of purchase: _____



Troubleshooting

If you experienced unsatisfactory operations, please follow our troubleshooting guidelines listed below.

Symptom	Possible Cause	Solution
Diffuser cannot turn on	No more battery power Not Turning on for a period	Charge the battery until the LED light keep in Green If the appliance is fully discharge, please charge the appliance for a few minutes to activate the appliance to charge up
The device is on but no mist	Nozzle did not attach securely	Remove the nozzle and reinstall to the slot correctly
	The oil bottle in empty or the oil level lower than the end of the oil pipe	Add more essential oil, change another oil bottle or the oil pipe.
	Using only the base notes oil to run the machine	Mix with middle/top notes oil or use other oil to run the machine
	Oil pipe did not attach securely to the nozzle	Reinsert the oil pipe into the nozzle correctly
Oil is leaking from the nozzle / nebulizer / fragrance	The nozzle / nebulizer oil bottle is in a tilt or set on side status.	Always put them on a stable and flat surface. Never tilt or set on side the nebulizer and nozzle.

BLOOMY LOTUS

Giving you a room to breathe.

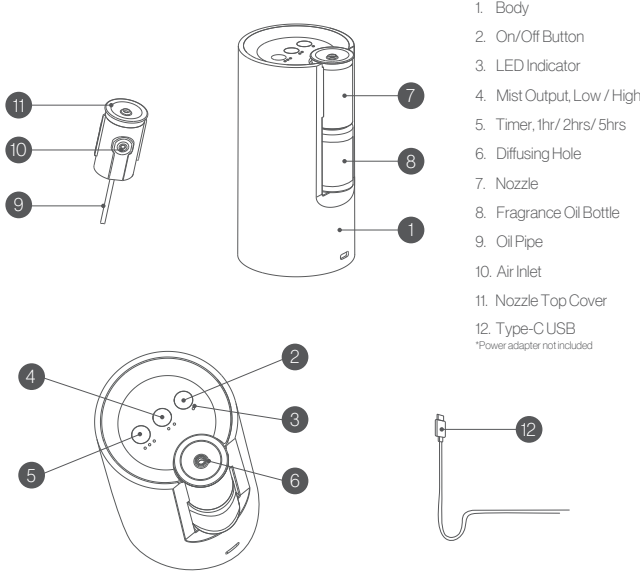


USER'S MANUAL Bamboo (Rechargeable)

Thank you for purchasing this product.
Please read the user manual carefully before use.

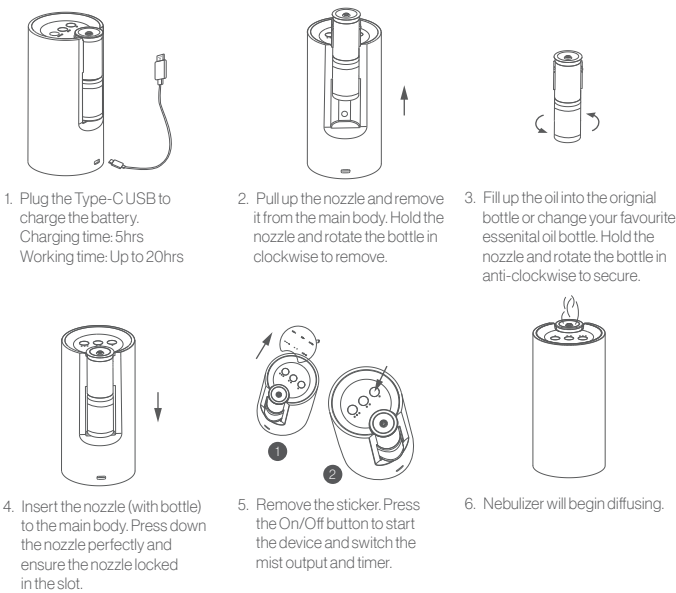
Overview

Main body



Operation Instructions

Make sure the machine is fully charged before you use it for the first time.



Note :

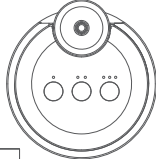
- For best result, we recommend to use 100% pure essential oil with this nebulizer. Artificial fragrance, flavor, or impurities might harm to the unit.
- Do not remove the nozzle and moving the device during operation.
- Keep the nebulizer on a stable and flat surface. Carpet, cushions, or other uneven surfaces might affect the ventilation system.
- Use any 5ml, 10ml or 15ml of your favourite essential oil bottle or the default oil bottle to this nebulizer. You may cut the oil pipe to fit in different size of the bottle. (Make sure to cut from the flat part as the non-flat part is for oil absorption.)

Setting Instructions

On/Off (1 LED indicator)

- Press to turn on the device.
- Default setting is low level output, 5 mins diffusing with 10 mins off intervals.
- Default timing is 1hour working time.

Operating : Green Light ON	Low Battery : Red Light starts to flash
Charging Red Light ON	Battery Fully Charged: Green Light ON



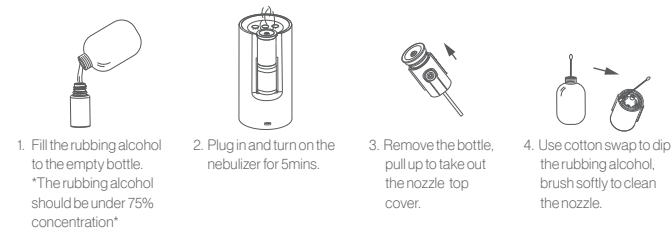
Mist output (2 LED indicator)

- Default setting is low level output, 5 mins diffusing with 10 mins off intervals.
- Press the mist output button once to switch to high level output, 5mins diffusing with 5 mins off intervals.
- Press the mist output button twice to switch back low level output.

Timer (3 LED indicator)

- Default timing is 1hour working time.
- Press the timer button once to switch to 2hours working time.
- Press the timer button twice to switch to 5hours working time.
- Press the time button third to switch back 1hour working time.

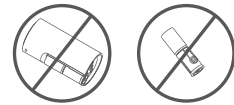
Clean & maintenance



Note :

- Never use the alcohol with over 75% concentration, it might hurt the machine.
- Alcohol is flammable, keep the indoor air circulation to prevent fire occur.
- For best result, clean the nozzle 1-2times per week.
- Clean the nozzle and change the oil pipe before change any other of the essential oil.
- Strength of aroma will vary depending on settings and different types of oil. Find the settings that fit your needs.
- Use only pure natural essential oils to prevent damaging the diffuser components.

Make sure do not tilt down the nozzle or device as the oil will leak and might harm the device.



BLOOMY LOTUS

Giving you a room to breathe.