

CUSTOMER CARE

If you have any questions, or if you experience any difficulties please call our Careline on: **01242 702345** or email us at: **online@riobeauty.com**

To reorder additional accessories, please visit **www.riobeauty.com** or contact your local distributor.

GUARANTEE

To register your two year guarantee online, visit: **www.riobeauty.com/warranty_online.htm**

DISPOSAL



The Waste of Electrical and Electronic Equipment (WEEE) Directive (2012/19/EU) has been put in place to recycle products using best available recovery and recycling techniques to minimise the impact on the environment, treat any hazardous substances and avoid the increasing landfill. This product is classed as Electrical or Electronic equipment so please ensure that at the end of the life of this product it is disposed of in the correct manner in accordance with local authority requirements. It must NOT be disposed of with household waste.

IMPORTANT INFORMATION

- Cleaning and maintenance shall not be made by children without supervision.
- Misuse of this product can cause harm.
- This product must only be used for its intended purpose as described in this user guide.
- There are no user serviceable parts inside the unit.

SPECIFICATION

Power Supply: 3xAAA, 1.5 V, LR03, MN240



This unit complies with current EU product legislation.



This product is not suitable for use in the bathroom, it is NOT water resistant.

- Do NOT immerse this product into water.
- Do NOT hold the product under running water.
- Do not use on cuts or broken skin.
- Do not use this product on loose skinned parts of your body or any areas showing signs of: Varicose veins, skin diseases (for example eczema, psoriasis, dermatitis), cuts and abrasions, irritation, warts, moles, hypersensitivity or sunburn, phlebitis, recent scar tissue, other skin conditions. We recommend you consult your physician before treatment if you suffer from any of the above conditions.
- We do NOT recommend use on persons suffering from diabetes.
- Do NOT share roller, single person use only.
- Keep long hair, necklaces and loose clothing away from the spinning roller head.
- For external use only.
- Do NOT place this product near any heat sources.
- Do NOT use this product if it is not working properly, or if it has been dropped or damaged.

60 SECOND PEDI

HARD SKIN REMOVER



smoother skin in seconds

PRECAUTIONS

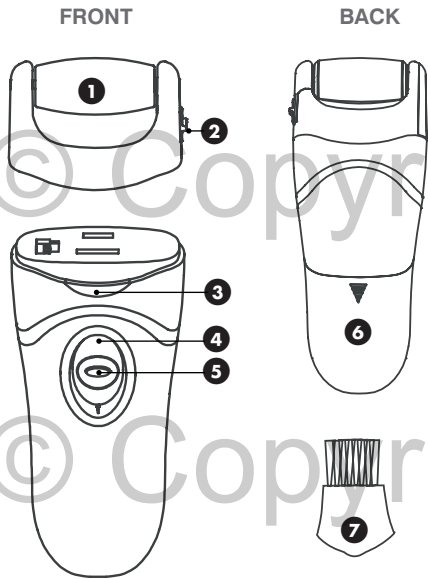
- **Please read all instructions thoroughly and retain for future reference.**
- This appliance can be used by children aged 8 years and above and persons with reduced physical, sensory or mental capabilities or lack of experience and knowledge if they have been given supervision or instruction concerning the use of the appliance in a safe way and understand the hazards involved. Children shall not play with the appliance.

Rio, Dezac and 60 SECOND PEDI™
Hard Skin Remover are trademarks of
The Dezac Group Ltd © The Dezac Group Ltd 2015
PO Box 17, Cheltenham Spa, England GL53 7ET
www.riobeauty.com

INTRODUCTION

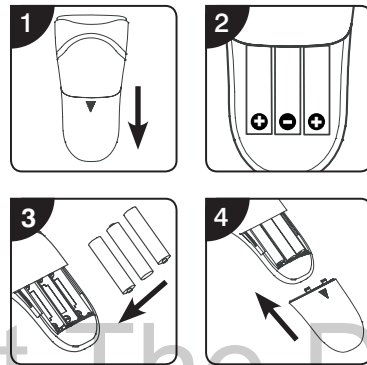
60 SECOND **PEDI™** Hard Skin Remover buffs away, hard, rough and dry skin in seconds, leaving you with fabulously smooth feet.

KNOW YOUR UNIT



- ❶ Roller
- ❷ Roller release button
- ❸ Roller head release button
- ❹ Slide on/off switch (with 2 speed settings)
- ❺ Safety switch lock
- ❻ Battery cover
- ❼ Cleaning brush

BATTERY FITTING AND INFORMATION



To fit the battery, remove the battery cover on the back of the unit by sliding it downwards.

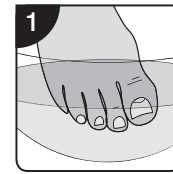
Insert three 1.5v AAA alkaline batteries ensuring the (+) and (-) terminals are as shown.

Replace the cover ensuring it is shut firmly in place.

- If the unit is left unused for a long period of time, remove the batteries.
- Do NOT use rechargeable batteries.
- Please ensure that the batteries are disposed of in the correct manner in accordance with local authority requirements.

HOW TO USE

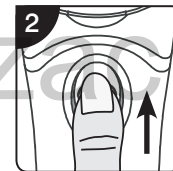
60 SECOND **PEDI™** Hard Skin Remover is suitable for smoothing away hard, rough and dry skin on the feet and heels only. You should not use it on any other part of the body.



STEP 1

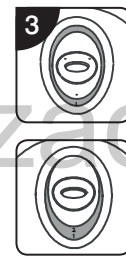
Ensure that the skin on your feet is clean and **completely dry**.

Note: You should not use 60 SECOND PEDI™ Hard Skin Remover on broken skin.



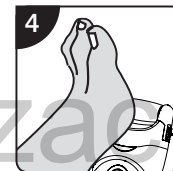
STEP 2

Turn the unit on by pressing the safety lock button in the centre of the on/off switch and pushing the switch up.



STEP 3

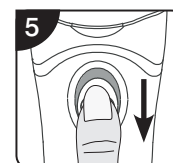
Select the programme speed by pushing the switch half way up for low (1) and all the way up for high (2).



STEP 4

Gently move the unit backwards and forwards over the area of hard or dry skin for **2-3 seconds at a time**, stopping to check if you have achieved the desired result. Do not apply to one area of skin for too long or it may cause discomfort.

Note: Do not press too hard on the area or the roller will stop spinning.

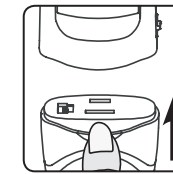


STEP 5

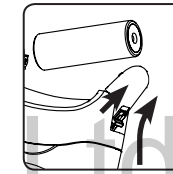
Switch off the unit by sliding the switch down to the off position.

CLEANING

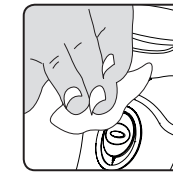
Ensure the unit is switched off before cleaning.



Remove the roller head by pushing the release button. Clean the head with the cleaning brush.



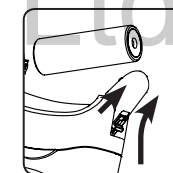
To clean the roller, remove from the head by pushing up the roller release button. Rinse roller under a tap and dry thoroughly. Make sure the roller and roller head is firmly installed before switching the unit back on.



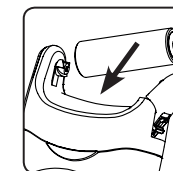
The body of the unit should be cleaned with a soft cloth. **Do not immerse it in water. Do NOT use solvents or abrasive cleaners.**

CHANGING THE ROLLER

For best results, it is recommended that you change the roller as soon as it shows signs of wear or becomes less effective. The amount of time between replacements will depend upon the frequency of use and the size of the area being treated. **Do NOT use attachments that are not recommended.**



Remove the roller by pushing up the release button on the side of the unit.



Place the new roller in the unit and ensure that the larger hole matches up with the larger pin before clicking into place. Make sure the roller is firmly installed before switching the unit back on.