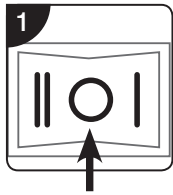
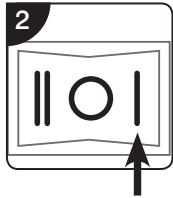


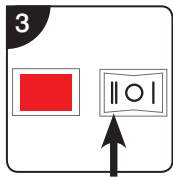
## USING YOUR LAMP



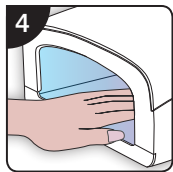
On the side of the UV lamp unit you will find the power switch. In the 'O' position the unit is switched off.



Plug the unit into the mains power supply and click the power switch to 'I' to turn the lamp on continuously without any timer functions.



To use the timer function click the power switch to 'II', then **press the red button** to the left. This will start the timer for **3 minutes**. After 3 minutes the lamp will turn off automatically. To reset the timer, simply **press the red button again**.



The lamp is now ready for use. Use the lamp as directed by the UV Gel or polish suppliers directions for curing.



Ensure the switch at the side of the unit is in the 'O' position and the unit is unplugged when the lamp is not in use.

## CUSTOMER CARE

If you have any questions, or if you experience any difficulties please call our Careline on: **01242 702345** or email us at: **online@riobeauty.com**

To reorder additional accessories, please visit **www.riobeauty.com** or contact your local distributor.

## GUARANTEE

To register your two year guarantee online, visit: **www.riobeauty.com/warranty\_online.htm**

## DISPOSAL



The Waste of Electrical and Electronic Equipment (WEEE) Directive (2012/19/EU) has been put in place to recycle products using best available recovery and recycling techniques to minimise the impact on the environment, treat any hazardous substances and avoid the increasing landfill. This product is classed as Electrical or Electronic equipment so please ensure that at the end of the life of this product it is disposed of in the correct manner in accordance with local authority requirements. It must NOT be disposed of with household waste.

## CARE & MAINTENANCE

- Do NOT leave your UV lamp unattended when switched on.
- Do NOT disassemble or repair. There are no user serviceable parts inside the unit.
- If a bulb fails, please contact Rio or its service agent for replacement. No alternative bulbs should be used to those featured on the rating label.
- Do NOT expose this unit to water.
- Hands MUST be dry when operating the UV lamp.
- ALWAYS unplug the unit before cleaning with a damp cloth. Do NOT use solvents or detergents.
- ONLY use your UV lamp to cure your nails. Switch off when not curing.
- If you think the unit is not working correctly or is faulty, discontinue use immediately and call our customer careline.
- If the supply cord to your lamp is damaged the unit must not be used until the cord is replaced by Rio or its service agent or a similarly qualified person in order to avoid a hazard.

## SPECIFICATION

Input: 230V-50Hz 50W  
**Replacement Bulb Code:** 1-UVLP6-BULB-SET

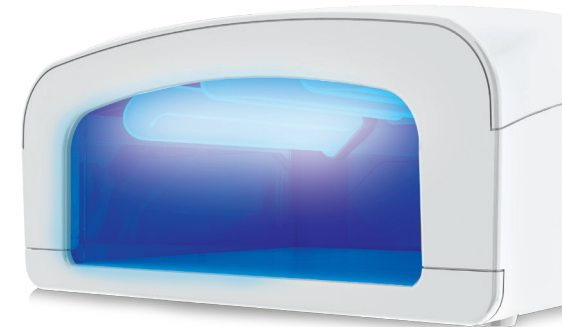
Indoor use only

Conforms with relevant European Directives

Class 2 Insulation

Read instructions before operating this product

# PROFESSIONAL UV LAMP™



cures and dries gels or polishes in just 3 minutes



the beauty specialists

## PRECAUTIONS

- **Read all instructions thoroughly and retain for future reference.**
- Do NOT use the UV lamp for any other purpose other than those specified in these instructions.
- Keep out of reach of children. Children and non users should not be present during lamp operation.
- Your UV lamp emits UV light, do NOT stare directly at the light source.
- Exposure to UV light should be limited to a maximum of 6

Rio, Dezac and PROFESSIONAL UV LAMP™ are trademarks of The Dezac Group Ltd © The Dezac Group Ltd 2015  
PO Box 17, Cheltenham Spa, England GL53 7ET

**www.riobeauty.com**

1-IN-UVLP6-COM-NA-UK/1.0

treatments to each hand in any one day (Each treatment lasting 3 minutes).

- As with the sun or all UV appliances, over exposure to ultra violet (UV) radiation can cause skin or eye damage (including sunburn) that may be irreversible. Excessive and repeated exposure to ultra violet light may lead to premature aging of the skin as well as increased risk of development of skin tumours. Always seek medical advice if persistent lumps or sores appear on the skin, or if there are changes in pigmented moles. Exposure to UV light when young increases the risk of skin damage later in life.
- Do not operate the unit without the bulb fitted or if it is broken - the unit may become damaged as a result.

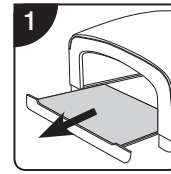
### UV appliances are not to be used by persons:

- With open cuts on or around the cuticles or fungal nail infections.
- Under the age of 18 years.
- With sunburn or skin that burns easily when exposed to the sun.
- Suffering from or previously suffering from skin cancer or predisposed to skin cancer.

- Having an immediate family member with a history of melanoma.
- Having a disease that involves photosensitivity or receiving photosensitising medication (increasing sensitivity to ultraviolet radiation). If in doubt, take medical advice.
- Not intended for use by persons with reduced physical, sensory or mental capabilities, or lack of experience and knowledge, unless they have been given supervision or instruction concerning the use of the appliance by a person responsible for their safety.
- If itching, an allergic reaction or skin reddening occurs within 48 hours of treatment, further exposure should cease until medical advice is sought.

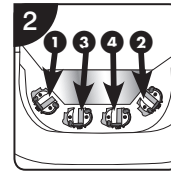
## INSERTING BULBS

Before you start using the UV lamp, you will need to insert the 4 UV bulbs (1-UVLP6-BULB-SET) supplied.

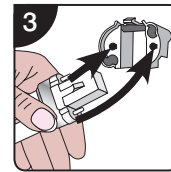


Ensure the power switch is in the 'O' position and the unit is unplugged from the mains power supply.

You will find it easier to insert each of the bulbs if you pull out the bottom tray and turn the unit upside down.



Inside the UV lamp unit you will find 4 bulb sockets. It is easier to insert the outer two bulbs, followed by the two central bulbs.



Hold the bulb near the silver base and carefully push the bulbs into the sockets so that each bulb 'clicks' into place.

**NOTE: DO NOT forget to replace the bottom tray.**

## REPLACING BULBS

**IMPORTANT:** To ensure the safety and effectiveness of this product, replacement bulbs should only be purchased from Rio or its service agent.

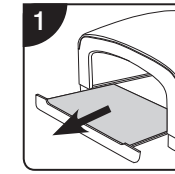
### Quote code: 1-UVLP6-BULB-SET

No alternative bulbs should be used.

The bulbs can be removed either directly or by using a piece of string.

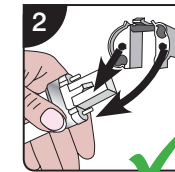
## REPLACING BULBS

### Direct Removal



Ensure the power switch is in the 'O' position, the unit is unplugged from the mains power supply and bulbs are cool.

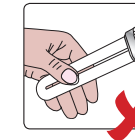
You will find it easier to replace bulbs if you pull out the bottom tray and turn the unit upside down.



First you will need to remove the defective bulbs. The outer two bulbs are easier to access if you remove the central bulbs first.

It is easier to remove the bulbs if you grip at the silver base of the bulb and firmly pull straight out.

**Note:** Avoid holding the glass bulb too tightly.

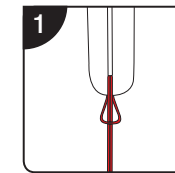


Do NOT hold at the tip of the bulb or twist.

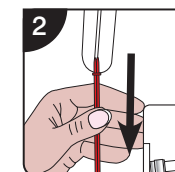
**Insert new bulbs following the 'INSERTING BULBS' section.**

If you experience difficulties removing the bulbs by hand, you can use the 'string' method:

### Removal Using String



Follow all the steps for direct removal, but instead of holding the bulb with your hands near the silver base, loop a piece of string as illustrated through the tip of the bulb.



Steadily pull on the string at a slight angle as illustrated to aid removal.