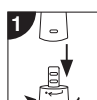


TREATMENT



Remove make up before use. Attach either the ultra soft brush head or the gentle exfoliator head.



Apply your chosen cleansing product either to the head attachment or your face.



Press the power button to turn your unit on.



Work over each area for 20 seconds, starting with the forehead, then the nose, chin and finish with each cheek.



Turn the unit off by pressing the power button.

Gently rinse your skin with warm water and pat dry with a towel.

Finish off your treatment with a facial massage using either the precision massager or the roller massager and your favourite moisturising cream or oil.

AFTERCARE

You should clean the attachment heads after every use. Remove from the unit and rinse with warm soapy water. Towel or air dry before storing.

DISPOSAL



The Waste of Electrical and Electronic Equipment (WEEE) Directive (2012/19/EU) has been put in place to recycle products using best available recovery and recycling techniques to minimise the impact on the environment, saving energy and resources and avoiding hazardous materials from going to landfill.

The product is classed as Electrical or Electronic equipment so please ensure that at the end of the life of this product it is disposed of in the correct manner in accordance with local authority requirements. It must NOT be disposed of with household waste.

SPECIFICATION

Power: 1.5v (1x AA battery, not supplied).



This unit complies with current EU product legislation.

This product is not a medical device.

CUSTOMER CARE

If you have any questions, please contact us at:
online@riobeauty.com

© The Dezac Group Ltd 2019
PO Box 17, Cheltenham Spa, England GL53 7ET
www.riobeauty.com

4-IN-1 FACIAL CLEANSING BRUSH & MASSAGER



INSTRUCTIONS

PRECAUTIONS

- **Please read all instructions thoroughly and retain for future reference.**
- This appliance can be used by children aged 8 years and above and persons with reduced physical, sensory or mental capabilities or lack of experience and knowledge if they have been given supervision or instruction

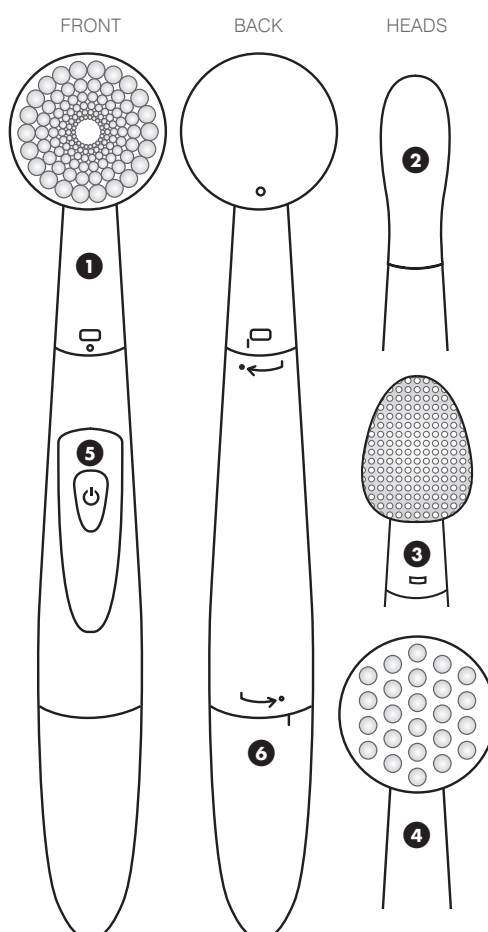
1-IN-FABM-UK/1.0

PRECAUTIONS

concerning the use of the appliance in a safe way and understand the hazards involved. Children shall not play with the appliance. Cleaning and maintenance shall not be made by children without supervision.

- When treating the eye area keep the precision massager at least 1 centimetre away from the eyes.
- Do not use on cuts or broken skin.
- Do not use this product on loose skinned parts of your body or any areas showing signs of: Varicose veins, skin diseases (for example eczema, psoriasis, dermatitis), cuts and abrasions, irritation, warts, moles, hypersensitivity or sunburn, phlebitis, recent scar tissue, other skin conditions. We recommend you consult your physician before treatment if you suffer from any of the above conditions.
- For external use only.

KNOW YOUR UNIT



1 ULTRA SOFT BRUSH

Soft enough for even sensitive skin. Gently removes dead skin cells and impurities. Deeply cleans pores and polishes the skin's surface for improved tone and firmness.

2 PRECISION MASSAGER

Targeted treatment for underneath the eye. Helps reduce puffiness. Stroke from the inside of the eye socket outwards.

3 GENTLE EXFOLIATOR

Gently buffs away imperfections by removing dead skin cells, leaving your skin beautifully smooth. Perfect for all over facial exfoliation.

4 ROLLER MASSAGER

The rounded head is ideal for all over facial massage. Reduces puffiness and helps flush out toxins.

5 POWER BUTTON

Press once to turn your 4-in-1 Facial Cleansing Brush & Massager on or off.

6 BATTERY COMPARTMENT

To fit the battery, remove the battery cover at the bottom of the unit by twisting it anticlockwise and pulling downwards.

Insert one 1.5v AA alkaline battery ensuring the (+) and (-) terminals are as shown inside the battery compartment.

Replace the cover ensuring it is secure.

- If the unit is left unused for a long period of time, remove the batteries.
- Do NOT use rechargeable batteries.
- Please ensure that the batteries are disposed of in the correct manner in accordance with local authority requirements.

