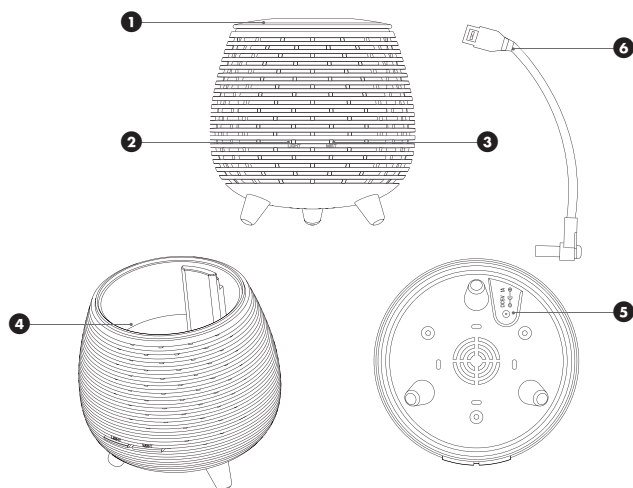


ENGLISH

# ZOEY

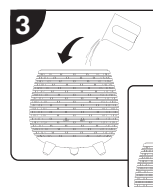
AROMA DIFFUSER, HUMIDIFIER & NIGHT-LIGHT



## WARNINGS

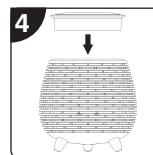
- **Please read all instructions thoroughly and retain for future reference.**
- Do not immerse it in water. Do NOT use solvents or abrasive cleaners.
- Place on a flat surface about 60cm away from the floor and 10cm away from the wall. DO NOT place on wooden furniture or surfaces which can be damaged by water.
- Keep away from any appliances which are sensitive to water to avoid accidents.
- Always remove water and wipe clean the water tank when the diffuser is not in use.
- Empty the tank and refill every third day. Before refilling, clean it with fresh tap water or cleaning agents if required by the manufacturer. Remove any scale, deposits, or film that has formed on the sides of the tank or on interior surfaces, and wipe all surfaces dry.
- High humidity levels may encourage the growth of biological organisms in the environment.
- Do not permit the area around the humidifier to become damp or wet. If dampness occurs, turn the output of the humidifier down. If the humidifier output volume cannot be turned down sufficiently, use the humidifier intermittently. Do not allow absorbent materials, such as carpeting, curtains, drapes, or tablecloths, to become damp.
- Unplug the appliance during filling and cleaning.
- Never leave water in the reservoir when the appliance is not in use.
- Empty and clean the humidifier before storage. Clean the humidifier before next use.
- Micro-organisms that may be present in the water or in the environment where the appliance is used or stored, can grow in the water reservoir and be blown in the air causing very serious health risks when the water is not renewed and the tank is not cleaned properly every 3 days.

- **Clean the water tank every three days.**

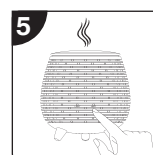


Carefully fill with water.  
**Note:** Do not fill with hot water or exceed the max water level.

**Optional:** Add 3-5 drops of essential oil.



Replace cover and connect the USB cable to a power supply.  
**Note:** The unit will light up briefly.



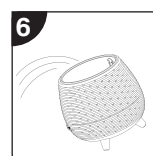
Press the Mist button to start the diffuser.

### Mist function

Press **once** for continuous mist.  
Press **twice** for intermittent mist (15 sec intervals).  
Press a **third** time to switch off.

### LED light function

Press **once** to turn on the changing light sequence.  
Press **twice** to stay on selected light colour.  
Press again to select next colour in sequence.  
**Press and Hold** to switch lights off.  
**Note:** The light automatically switches off when the water runs out.



Drain and rinse the water tank thoroughly. Wipe clean and dry with a clean soft cloth or paper towel.

## SPECIFICATION

Model: DH02  
Input: 5.0V  $\approx$  1000mA



Read these instructions carefully before use and then retain for future use.



This product is for indoor use only.



This product complies with current EU product legislation.



Socket Input centre pin positive.

UK  
CA

## CUSTOMER CARE

If you have any questions, email us at: [online@riobeauty.com](mailto:online@riobeauty.com)

## GUARANTEE

To register your two year guarantee online, visit:  
[www.riobeauty.com/warranty\\_online.htm](http://www.riobeauty.com/warranty_online.htm)

## DISPOSAL



The Waste of Electrical and Electronic Equipment (WEEE) Directive (2012/19/EU) has been put in place to recycle products using best available recovery and recycling techniques to minimise the impact on the environment, treat any hazardous substances and avoid the increasing landfill. This product is classed as Electrical or Electronic equipment so please ensure that at the end of the life of this product it is disposed of in the correct manner in accordance with local authority requirements. It must NOT be disposed of with household waste.

UK RP: The Dezac Group Ltd, PO Box 17, Cheltenham Spa, England GL53 7ET

EU RP: The Dezac Group (Europe) B.V. Azura,  
Saturnusstraat 46-62, 2132 HB Hoofddorp, Netherlands'

[www.riobeauty.com](http://www.riobeauty.com)

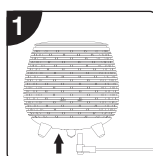
1-IN-DH02-EU/1.1

## KNOW YOUR UNIT

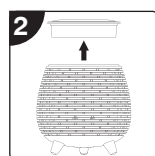
- 1 Cover
- 2 LED light button
- 3 Mist button

- 4 Max water level
- 5 Power socket
- 6 USB cable

## GETTING STARTED



Plug the USB cable into the base of the unit.



Remove the cover.