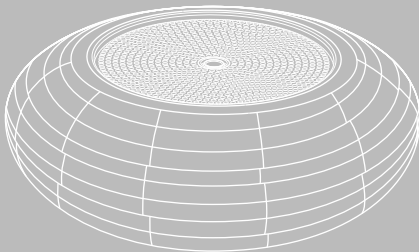




MADE BY ZEN®



ARRAN

Solid bamboo Aroma Diffuser with a soft
colour changing mood light

TABLE OF CONTENTS:

A. ABOUT THE ARRAN

B. TECHNICAL SPECIFICATION

C. OPERATING INSTRUCTIONS

D. FEATURES

E. MAINTENANCE

F. TROUBLESHOOTING

G. WARRANTY

Congratulations on purchasing your MADE BY ZEN® Arran Aroma Diffuser.
Please keep this manual for further reference and maintenance.



ABOUT THE ARRAN

Imagine inhaling the purifying air of a bamboo forest, as the wind brushes through the leaves carrying its scent towards you. The Arran Bamboo Aroma Diffuser is the ideal way to rejuvenate your home with fragrance and light to magically transform your surroundings, by bringing the beauty of nature indoors.

The Arran is made with an elegantly carved solid bamboo base covered with frosted glass. The bamboo we use is selected from a sustainable source, which is cut by hand, allowing maturing and flowering strands to remain flourishing and have the least impact on wildlife.

Caring for our planet is important to MADE BY ZEN® and we are committed to the protection and conservation of the earth as much as possible.

Reduce the stress of everyday life and enhance the ambience in your living space with the mood lighting feature. The Arran Aroma Diffuser is operated by placing your hand over the bamboo cover and applying gentle pressure, through its cleverly designed stylish switch on function.



LED Bulbs

Built in LEDs provide colour changing mood lighting which can be set to a specific colour or switched off



Sleep Mode

Sleep mode
(can be used without
the light feature)



Aromatherapy

Suitable for use with any essential or fragrance oils (MADE BY ZEN® oils recommended).



TECHNICAL SPECIFICATIONS

Model No: EWMD095A

Power: 12W

Name: Arran

Water Capacity: 100ml

Product Size: $\Phi 200 \times 71\text{mm}$

Run Time: 5+ hours

Voltage: DC24V

A. Bamboo Cover

B. Base with Water Tank

(1) Ceramic Disc

(2) Max. Water Level

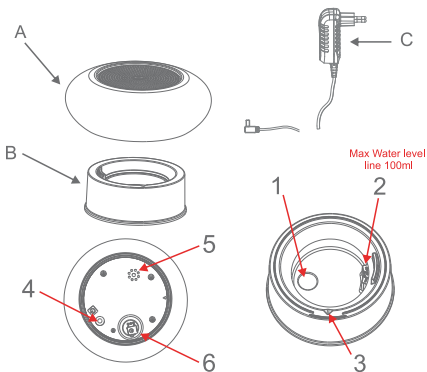
(3) Discharge Groove

(4) On/Off Button

(5) Air Vent

(6) DC Jack

C. Adaptor



IMPORTANT NOTES BEFORE USE:

1. Place the Aroma Diffuser on a flat surface, at least 60cm away from the floor and at least 10cm away from the wall. **DO NOT** place the Aroma Diffuser on wooden or polished furniture that may be damaged by water moisture.
2. Always unplug the Aroma Diffuser from the mains electrical supply when cleaning or filling with water. Always use the power adaptor supplied. Ensure the cable is secure to avoid tripping or knocking over the Aroma Diffuser. If the power adaptor is damaged, it must be replaced with a suitable adaptor provided by the manufacturer or its agent. Alternatively, a new adaptor can be purchased from your retailer.
3. Use a suitable measuring cup to fill the water into the water tank. Never attempt to fill water under a running tap or whilst plugged in. Do not fill the water beyond the max water level line. If overfilled, carefully remove the excess water from the tank in the 'drainage direction' as shown by the arrow and away from the vent hole.
4. The Aroma Diffuser must be kept out of reach from children and pets to avoid risk of injury. Children should be supervised at all times to ensure they do not play with the appliance.
5. The Aroma Diffuser is not intended for use by persons (including children) with reduced physical, sensory or mental capabilities or lack of experience and knowledge, unless they have been given supervision or instruction concerning use of the appliance by a person responsible for their safety.
6. Keep the Aroma Diffuser in a clear space to allow the mist to freely spread and away from appliances especially those sensitive to water to avoid unnecessary accidents.
7. The Aroma Diffuser must be cleaned after each use and should always be kept clean and dry when not in use. Never leave stagnant oil and water in the water tank for prolonged periods.

8. Never attempt to disassemble your Aroma Diffuser or repair the product, as this will void your warranty and create a shock hazard. Contact your retailer if an internal inspection is required.

9. In case of abnormal observations such as smoke, peculiar smells or noise, stop using the Aroma Diffuser immediately and contact the retailer from where you purchased it. Never wrap the aroma diffuser or adaptor with cloth or paper as blocking ventilation could increase the risk of fire.

10. Always handle the Aroma Diffuser with care – accidental damage is not covered under the warranty.

11. Always use water at room temperature and use only fresh, clean water from a reliable source. Do not fill the water tank with other chemicals or liquids other than water and a few drops of fragrance or essential oils.

12. Never touch the water within the water tank when the diffuser is in operation as the water may become warm. It is perfectly normal for the water temperature to increase over time. Especially if it has been running for a few hours. This is caused by the energy created from the vibrating disc. The water should not exceed 40°C but for some models it can increase to 50°C (+/- 5°C). However, as the mist dissipates from the mist outlet, the water temperature cools rapidly due to the large surface area of each droplet, hence the mist is referred to as a 'cool mist'.

13. Always plug the adaptor into the DC jack before plugging into the mains.

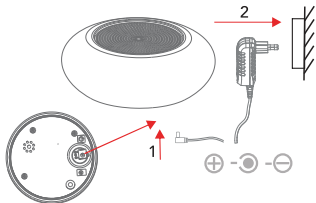
14. Do not remove the covers during operation.

15. NEVER touch the ultrasonic ceramic disc while the diffuser is plugged in as this could cause serious injury.

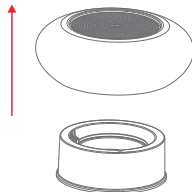
16. Do not immerse the unit in water or other liquids and do not attempt to clean in a dishwasher.



OPERATING INSTRUCTIONS

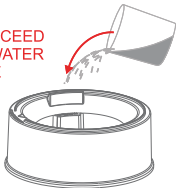


1. Connect the adaptor jack to the DC jack base of the unit. Plug the adaptor into the mains.



2. Place the diffuser on a firm and flat surface, in upright direction. Remove the bamboo cover upward carefully as shown.

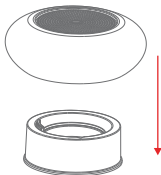
**DO NOT EXCEED
THE MAX WATER
LEVEL LINE**



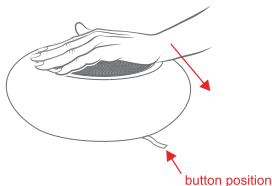
3. Add fresh tap water to the water tank using a suitable filling cup, to the max level line.



4. Add 3-5 drops of your favourite Fragrance or Essential Oil into the water.



5. Replace the bamboo cover.



6. Switch on the Aroma Diffuser by gently placing your hand over the bamboo cover as illustrated in the direction of the on/off button located at the base of the unit.

Note: The Arran Aroma Diffuser is designed with a 'click' sound that indicates the switch is functioning when pressed.

BUTTON FUNCTIONS:

1. PRESS ONCE: Aroma Diffuser and Mood Light will switch on. The Aroma Diffuser will mist continuously and the mood lighting will gradually change through a spectrum of colours.
2. PRESS TWICE: The mood light will freeze on your favourite colour light.
3. PRESS THRICE: The mood light will switch off. The only mist function will remain on, ideal for night time use.
4. PRESS FOUR TIMES: Aroma Diffuser and Mood Light will now switch off.

Note: Under normal operation, the Aroma Diffuser will switch off automatically when the water level runs low.



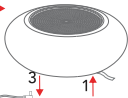
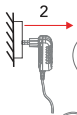
FEATURES

The Arran Ultrasonic Aroma Diffuser provides a revolutionary way to fragrance your surroundings. It works by creating high frequency vibrations that breaks down the water and oil into minute particles, which are then effectively diffused into the immediate surroundings.

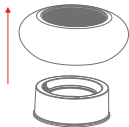
- **Unique patented design**
- **Low energy LED lights**
- **Mini humidifier**
- **Aroma Diffuser: Can be used with mood lighting or without the light, ideal for night time**
- **Quiet operation**
- **Auto-shut off when water runs out for an additional safety**
- **Easy to clean and use**



MAINTENANCE



1. Press the on/off button to switch off the unit and unplug the power adaptor.



2. Remove the cover.



3. Empty water via the water discharge groove.



4. Use a clean swab or cloth to clean the unit.

Caution: Always switch off the appliance and disconnect the power source from electrical outlet before cleaning.

Always keep your aroma diffuser clean and dry when not in use.

Never leave stagnant oil and water inside the tank for prolonged periods.

For stubborn oil build up, use sanitary alcohol on a cotton bud if required.

If the aroma diffuser does not generate mist (or generates little mist), clean the ceramic disc.

When cleaning, always take extra care to ensure water does not enter DC Jack power port. Allow the unit to dry thoroughly as advised below if water accidentally enters the electrical port.

Accidental Leakage: In the event of the aroma diffuser being knocked over during use, please follow the steps below to avoid malfunction.

- Unplug the diffuser from the mains and remove the cover carefully.
- Pour out any remaining water from the tank.
- Shake the diffuser gently to drain any water from inside, then leave for 24 hours for the diffuser to dry thoroughly in a well-ventilated area.



TROUBLESHOOTING

Problem	Possible Cause	Solution
No Mist or mist volume significantly reduced	Power supply is not connected	Plug in the power adaptor and press the on/off button
	Water is lower than the water level sensor	Refill the tank with ordinary tap water. Take care not to fill past the max water level line
	Water is exceeding the max water level line	Carefully pour out excess water via the water discharge groove
	There may be a build-up of oil on the ceramic disc	Clean the ceramic disc with water and a clean cloth
	Mist outlet is blocked	Clean the mist outlet by thoroughly cleaning the inside of the cover with clean water
	Ceramic disc ageing after 3000 hours of use	Replace the ceramic disc (available to purchase from your Retailer).

The intensity and amount of mist may vary, but this is not unusual and should not be considered as a fault. Factors that may affect this include water type, humidity, temperature, air currents etc.



WARRANTY

This product carries a 12-month warranty for proper use in accordance with this manual against any manufacturing defects. Accidental damage is not covered under the warranty, including glass breakage. The warranty period is 12 months from the date of purchase. In case of any problems arising during the warranty period, please contact your retailer for maintenance or claims. Proof of purchase will be required, so it is vital that you keep your receipt of purchase with this manual safely.

Corrosive oils such as Citronella may cause damage to the unit if left in the water tank. This type of damage is not covered under the warranty. This aroma diffuser must be cleaned after each use.



IMPORTANT!
MADE BY ZEN® Ultrasonic Aroma Diffusers comply with the WEEE Directive (Waste from Electrical and Electronic Equipment Directive) 2019/19/EU.

Electrical equipment is a large source of waste and if not properly recycled could have damaging effects on the environment, whereas if it is recycled, the resources could be used again.

Electronic waste needs to be separated from other waste to be recycled properly. When the Arran Aroma Diffuser reaches the end of its working life, please deposit at an appropriate collection point for recycling of electrical products. You can also recycle used electronics at Household Waste Recycling Centres.

Caring for our planet is important to us, so please help us by disposing of the Arran correctly. Thank You.

