



MADE BY ZEN®



GEM

Decorative rose quartz effect Aroma Diffuser
with a soft ambient light

TABLE OF CONTENTS:

- A. ABOUT THE GEM**
- B. TECHNICAL SPECIFICATION**
- C. OPERATING INSTRUCTIONS**
- D. FEATURES**
- E. MAINTENANCE**
- F. TROUBLESHOOTING**
- G. WARRANTY**

**Congratulations on purchasing the MADE BY ZEN®
Gem Aroma Diffuser.**

**Please keep this manual for further reference and
maintenance.**



ABOUT THE GEM

Rose Quartz is the stone of universal love. Powerful, healing and nurturing, it is known for its properties of harmony and peace. Taking inspiration from mother nature, the Gem Aroma Diffuser shines like a polished gemstone, each one with a unique pattern of marbled dusky pink. The ambient light gives a wholesome glow, creating the perfect calming vibe to soothe your soul. Even without the light, the Gem's lustrous body sits elegantly like a polished crystal.

Balance the mind and boost your energy by adding your favourite essential oils or home fragrance scents. The Gem releases a heatless scented mist which relaxes and melts away stress, the intermittent mist setting is ideal for diffusing the perfect amount of scent for stronger fragrances. Create an aura of calm and wellness, and treasure the Gem like a precious stone.



LED Bulbs

Warm, ambient LED lighting which can help you to relax.

- Soft glow, fixed ambient light
- Sleep mode (no light) option



**Intermittent
Mist Setting**

Intermittent mist setting automatically controls the scent diffusion, by intermittently switching the mist on and off every 30 seconds. This is ideal for using stronger scents/oils, or when scent is desired for a longer period of time.



Aromatherapy

Suitable for use with any essential or fragrance oils
(MADE BY ZEN® oils recommended).



TECHNICAL SPECIFICATIONS

Model Name: Gem Aroma Diffuser

Model No: EWFA2001RQM

Product Size: $\Phi 146 \times 152\text{mm}$

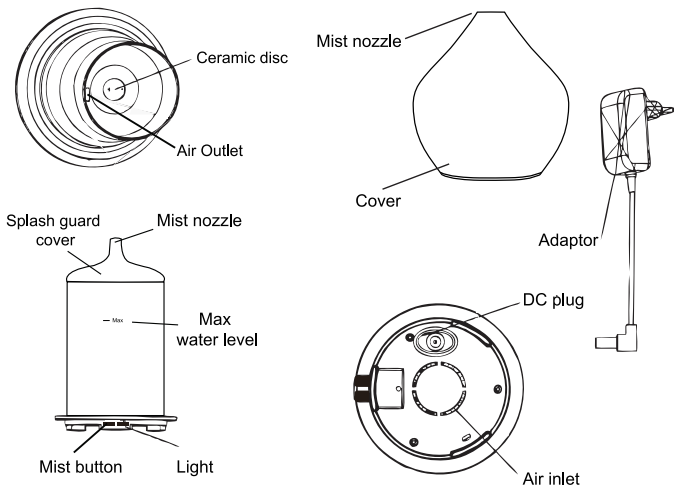
Voltage: DC 24V

Power: 12W

Adaptor Input: AC100-240V 50-60Hz

Water Capacity: 120ml

Run Time: 4+ hours



IMPORTANT NOTES BEFORE USE:

1. Place the Aroma Diffuser on a flat surface, at least 60cm away from the floor and at least 10cm away from the wall. DO NOT place the Aroma Diffuser on wooden or polished furniture that may be damaged by water moisture.
2. Always unplug the Aroma Diffuser from the mains electrical supply when cleaning or filling with water. Always use the power adaptor supplied. Ensure the cable is secure to avoid tripping or knocking over the Aroma Diffuser. If the power adaptor is damaged, it must be replaced with a suitable adaptor provided by the manufacturer or its agent. Alternatively, a new adaptor can be purchased from your retailer.
3. Use a suitable measuring cup to fill the water into the water tank. Never attempt to fill water under a running tap or whilst plugged in. Do not fill the water beyond the max water level line. If overfilled, carefully remove the excess water from the tank in the 'drainage direction' as shown by the arrow and away from the vent hole.
4. The Aroma Diffuser must be kept out of reach from children and pets to avoid risk of injury. Children should be supervised at all times to ensure they do not play with the appliance.
5. The Aroma Diffuser is not intended for use by persons (including children) with reduced physical, sensory or mental capabilities or lack of experience and knowledge, unless they have been given supervision or instruction concerning use of the appliance by a person responsible for their safety.
6. Keep the Aroma Diffuser in a clear space to allow the mist to freely spread and away from appliances especially those sensitive to water to avoid unnecessary accidents.
7. The Aroma Diffuser must be cleaned after each use and should always be kept clean and dry when not in use. Never leave stagnant oil and water in the water tank for prolonged periods.
8. Never attempt to disassemble your Aroma Diffuser or repair the product, as this will void your warranty and create a shock hazard. Contact your retailer if an internal inspection is required.
9. In case of abnormal observations such as smoke, peculiar smells or noise, stop using the Aroma Diffuser immediately and contact the retailer from where you purchased it. Never wrap the aroma diffuser or adaptor with cloth or paper as blocking ventilation could increase the risk of fire.

10. Always handle the Aroma Diffuser with care – accidental damage is not covered under the warranty.

11. Always use water at room temperature and use only fresh, clean water from a reliable source. Do not fill the water tank with other chemicals or liquids other than water and a few drops of fragrance or essential oils.

12. Never touch the water within the water tank when the diffuser is in operation as the water may become warm. It is perfectly normal for the water temperature to increase over time. Especially if it has been running for a few hours. This is caused by the energy created from the vibrating disc. The water should not exceed 40°C but for some models it can increase to 50°C (+/- 5°C). However, as the mist dissipates from the mist outlet, the water temperature cools rapidly due to the large surface area of each droplet, hence the mist is referred to as a 'cool mist'.

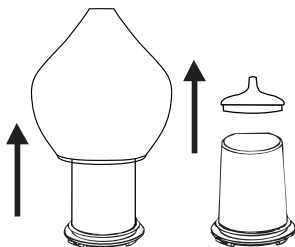
13. Always plug the adaptor into the DC jack before plugging into the mains.

14. Do not remove the covers during operation.

15. NEVER touch the ultrasonic ceramic disc while the diffuser is plugged in as this could cause serious injury.

16. Do not immerse the unit in water or other liquids and do not attempt to clean in a dishwasher.

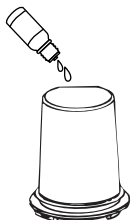
OPERATING INSTRUCTIONS



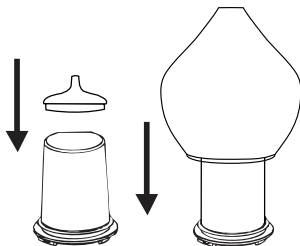
1. Place the diffuser on a firm and flat surface, in upright direction. Remove the cover upward and splash guard carefully as shown.



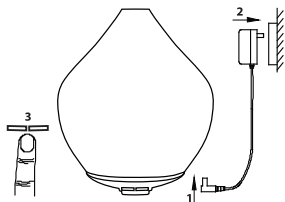
2. Add water to the water tank with a suitable measuring cup until the water reaches the max. water level line.



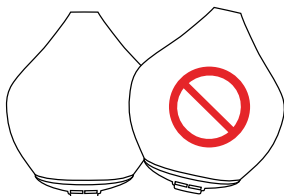
3. Add 3-5 drops of your favourite fragrance or essential oil into the water.



4. Replace the cover.



5. Plug the cable into the DC Jack before connecting the adaptor to the power source.



Note: Do not lean or move or attempt to empty or refill the diffuser during operation.

BUTTON CONTROLS

MIST CONTROL

- > Press MIST once to operate the continuous mist function. The aroma diffuser will mist continuously until the water level runs low. At this point the Gem will switch off automatically.
- > Press MIST twice to operate the intermittent mist function. The aroma diffuser will mist intermittently; 30 seconds on / 30 seconds off and will continue until the water level runs low. At this point the Gem will switch off automatically.
- > Press MIST three times to turn off the mist function.

LIGHT CONTROL

- > Press LIGHT once the ambient light will switch on.
- > Press LIGHT twice the ambient light will switch off.

Please note that the mist and light modes operate independently. This allows you to switch off the light whilst the unit is still misting; ideal for night time use.

Please note the auto-shut off will only operate when the mist function is being used. During the light only mode, you will have to manually switch off the light by pressing the LIGHT button twice.



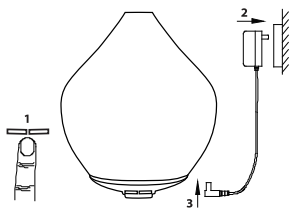
FEATURES

The Gem Ultrasonic Aroma Diffuser provides a revolutionary way to fragrance your surroundings. It works by creating high frequency vibrations that breaks down the water and oil into minute particles, which are then effectively diffused into the immediate surroundings.

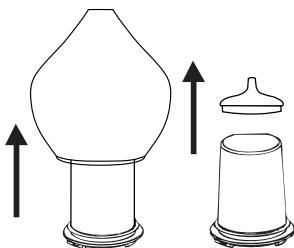
- Mini Humidifier
- Aroma Diffuser: Can be used with or without light, ideal for night time use
- Ambient lighting
- Low energy LED lights
- Quiet operation
- Auto shut-off when water runs out for additional safety
- Easy to clean and use



MAINTENANCE



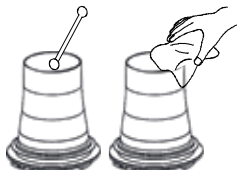
1. Make sure the light and mist functions have been switched off and unplug the power from the mains.



2. Remove the cover upward and splash guard carefully as shown.



3. Empty water via the water discharge groove.



4. Use a clean swab or cloth to clean the unit.

Caution: Always switch off the appliance and disconnect the power source from electrical outlet before cleaning.

Always keep your aroma diffuser clean and dry when not in use.

Never leave stagnant oil and water inside the tank for prolonged periods.

For stubborn oil build up, use sanitary alcohol on a cotton bud if required.

If the aroma diffuser does not generate mist (or generates little mist), clean the ceramic disc.

When cleaning, always take extra care to ensure water does not enter DC Jack power port. Allow the unit to dry thoroughly as advised below if water accidentally enters the electrical port.

Accidental Leakage: In the event of the aroma diffuser being knocked over during use, please follow the steps below to avoid malfunction.

- Unplug the diffuser from the mains and remove the cover carefully.
- Pour out any remaining water from the tank.
- Shake the diffuser gently to drain any water from inside, then leave for 24 hours for the diffuser to dry thoroughly in a well-ventilated area.



TROUBLESHOOTING

Symptom:	Possible Cause:	Solution:
Unit will not switch on	There is an insufficient amount of water in the water tank	Fill the water tank with water up to the max. Fill line. Be careful not to over fill the unit with water
	The power cable may not be connected properly	Disconnect cable and reconnect carefully
No mist being produced or mist volume seems abnormal	There is an insufficient amount of water in the water tank	Fill the tank with water up to the max. Fill line. Be careful not to overfill the unit with water.
	Water is exceeding the max. water level line	Pour out excess water. The water must not exceed max. water line
	The lid is not positioned correctly on the unit	Remove cover and replace correctly so mist can release properly
	There is a build-up of dirt and oil on the ceramic disc	Please refer to maintenance instructions on how to clean the ceramic disc
	The air suction part underneath the unit is blocked or dirty	Clean the suction part of any dirt as restricted air flow will affect the mist
Water is leaking from the product	The lid is not positioned correctly on the unit	Remove cover and replace correctly so mist can release properly
	The unit has been knocked or tipped over	Follow accidental leakage instructions
	The temperature is low or there is high humidity	Under these conditions the mist may condense quickly into water droplets

The intensity and amount of mist may vary, but this is not unusual and should not be considered as a fault. Factors that may affect this include water type, humidity, temperature, air currents etc.



WARRANTY

This product carries a 12-month warranty for proper use in accordance with this manual against any manufacturing defects. Accidental damage is not covered under the warranty. The warranty period is 12 months from the date of purchase. In case of any problems arising during the warranty period, please contact your retailer for maintenance or claims. Proof of purchase will be required, so it is vital that you keep your receipt of purchase with this manual safely.

Corrosive oils such as Citronella may cause damage to the unit if left in the water tank. This type of damage is not covered under the warranty. This aroma diffuser must be cleaned after each use.



IMPORTANT!

MADE BY ZEN® Ultrasonic Aroma Diffusers comply with the WEEE Directive (Waste from Electrical and Electronic Equipment Directive) 2019/19/EU.

Electrical equipment is a large source of waste and if not properly recycled could have damaging effects on the environment, whereas if it is recycled, the resources could be used again.

Electronic waste needs to be separated from other waste to be recycled properly. When the Aroma Diffuser reaches the end of its working life, please deposit at an appropriate collection point for recycling of electrical products. You can also recycle used electronics at Household Waste Recycling Centres.

Caring for our planet is important to us, so please help us by disposing of the Aroma Diffuser correctly. Thank You.

