



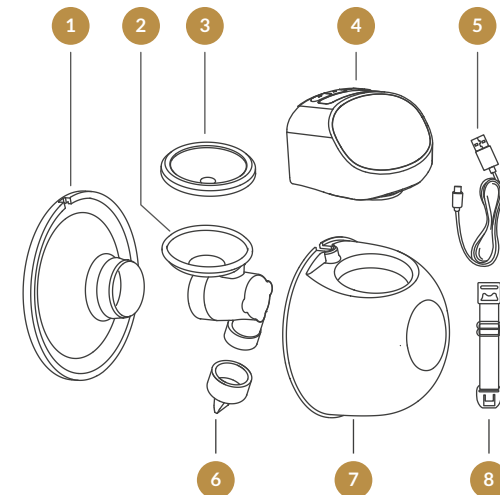
GIOmumLine

Wearable Electric Breast Pump

USER MANUAL

Read this user manual before using your wearable breast pump and keep the user manual for future reference.

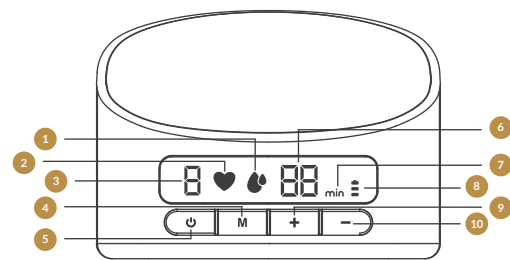
Product structure diagram 01



Parts list

- | | |
|----------------------|-------------------------|
| 1 Flange | 5 USB Charging Cable |
| 2 Linker | 6 Valve |
| 3 Silicone Diaphragm | 7 Milk Collector |
| 4 Pump Motor | 8 Bra Adjustment Buckle |

Description of led display and button function 02



- | | |
|-------------------------|----------------------|
| 1 Expression mode | 6 Time display |
| 2 Stimulation mode | 7 Time/Minute |
| 3 Level display | 8 Power display |
| 4 Mode selection button | 9 Level up button |
| 5 Power button | 10 Level down button |

What's in the box

- Flange; Pump Motor • Silicone Diaphragm
- USB Charging Cable • Milk Collector • Valve • Linker
- Bra Adjustment Buckle

Assembly 03

To assemble the pump, follow the steps below.

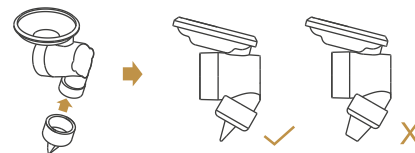
! CAUTIONS

- Make sure that you clean the pump as instructed in this user manual.
- Make sure that you assemble the pump correctly as instructed in this user manual.
- To avoid leakage, remove the residue around the rim before assembling.
- Wash your hands thoroughly before you assemble cleaned components.

1. Place the silicone diaphragm in the linker and press it with your hands to make the edges fasten tightly to ensure a perfect seal.

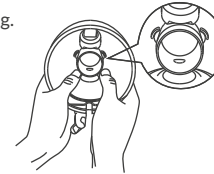


2. Install the valve into the bottom of the linker; make sure it is installed in the correct direction.

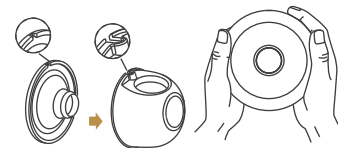


Assembly 04

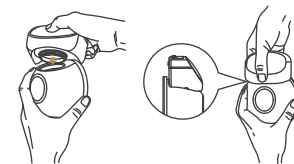
3. Put the assembled linker into the milk collector, with the "ear" part of the linker aligned with the internal slot of the milk collector, and press the linker disc part with both hands to fasten the edges firmly to ensure complete sealing.



4. Install the flange on the milk collector, align the slot feature on the flange with the same slot on the milk collector and press the edges with both hands to ensure that it fits into place.



5. Press the pump motor onto the milk collector and make sure that it fits perfectly into the milk collector.

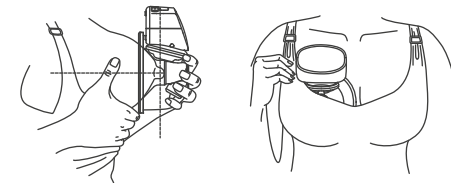


! WARNINGS

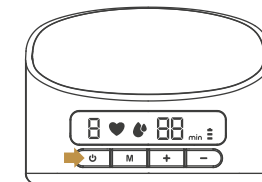
The breast pump does not work when the device is being charged using the Charger.

To begin pumping 05

1. Press the flange firmly against your breast, leave no gaps and make sure your nipple is centered. Keep the flange upright. Be careful not to distort the position of the product and the chest, otherwise the breast pump will not have suction.

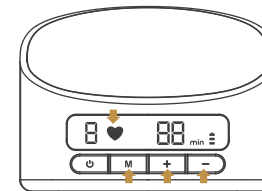


2. Short press the power button to start the breast pump.

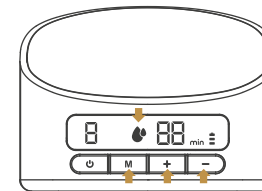


To begin pumping 06

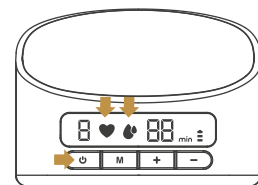
3. Short press the "M" button to switch to stimulation mode. This mode has 9 levels. You can choose the suction that you are comfortable with by short pressing the "+" button to level up and the "-" button to level down. In the early postpartum period, inducing milk production sometimes is not easy and this mode can be used to stimulate the breast and selectively promote milk secretion.



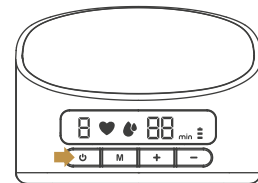
4. Short press the "M" button to switch to expression mode. This mode has 9 levels. You can choose the suction that you are comfortable with by short pressing the "+" button to level up and the "-" button to level down.



5. Short press the power button “M” again to switch to automatic mode. In this mode, the pump will default into the stimulation mode at gear 1 and will go up by one gear every 15 seconds, all the way to the maximum gear of 9 and then it will stay at that level (“♥” flashes and “👉” is always on). This process takes 2 minutes. Then turn to the expression mode at gear 1, go up one gear every 15 seconds, and it will stay at that level until the automatic shutdown (“👉” flashes and “♥” is always on). The automatic upshift function is stopped and is switched to manual operation when a button is pressed during automatic mode operation. If the power is turned off after switching to manual operation, the current mode will be memorized.



6. After you have finished pumping, short press “👉” to turn off the pump.

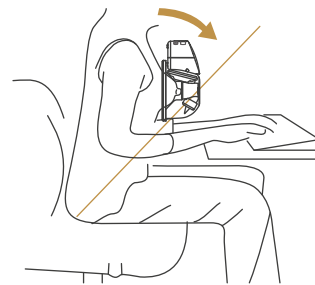


Tips:

1. This model has a built-in memory function; when you turn on the pump again, it automatically enters and up shifts to the working mode and suction level you used the last time. When you turning the pump off when it is in automatic mode and turn it on again, it will start from the first gear of the stimulation mode by default.
2. The breast pump will automatically stop after 20 minutes of work.

Breastfeeding sitting position

Relax and sit in a comfortable chair, lean slightly forward (use a cushion for back support). Make sure to keep the breast pump and breast cup upright.



Sitting posture

Cleaning 09

Cleaning & maintenance

	First Time Use	After Each Use
Pump Body	Turn off the pump by pressing the power button.	Wipe with a clean damp cloth with 70% ethyl alcohol or isopropyl alcohol as needed. Do not immerse the pump in water.
Flange, Silicone Diaphragm, Linker, Valve and Milk Collector	Boiling in water for 5 minutes. Do not microwave the flange, silicone diaphragm, linker, valve or the milk collector	Clean with mild dish washing soap or pure water

⚠️ WARNINGS

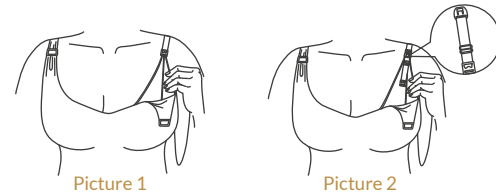
- Be careful when removing and cleaning the valve; if the valve is damaged, the breast pump will not work properly.
- To clean the valve, rub it gently in warm water with a few drops of a cleaning liquid. Do not insert any objects into the valve, that could damage it.

Clean by hand

- Place the pump parts in a clean wash basin used only for infant feeding items. Do not place the pump parts directly in the sink.
- Add soap and hot water to the basin.
- Cleanse the parts using a clean brush dedicated only to infant feeding items.
- Rinse by holding the parts under running water or by submerging in fresh water in a separate basin.
- Air-dry thoroughly. Place the pump parts, wash basin, and bottle brush on a clean, unused dish towel or paper towel in an area protected from dirt and dust. Do not use a dish towel to rub or pat the items dry.
- Clean the wash basin and the bottle brush. Rinse them thoroughly and allow them to air-dry after each use. Wash them by hand at least every few days.

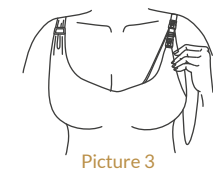
Instructions for the bra adjusting buckle 10

Adjust the length of bra straps to make suction more comfortable. One end of the bra adjustment buckle should hang on the inside buckle of the nursing bra. Adjust the length of the bra buckle on the other end of the bra adjustment buckle.



Picture 1

Picture 2



Picture 3

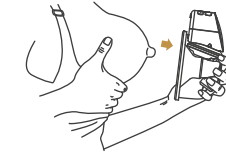
Battery status indicator illustration

Battery status indicator displayed	Remaining pumping time
Level three light is on	No less than 100 minutes
Level two light is on	No less than 65 minutes
Level one light is on	No less than 25 minutes
Level one light is flashing	No less than 5 minutes

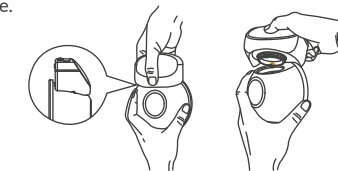
Ending your pumping journey 11

After you finish pumping, remove the breast pump from your breast. Keep the breast pump upright and remove the motor part and hold the milk collector to pour the breast milk into the bottle. Make sure the milk collector gap of the breast cup is aligned with the mouth of the bottle to prevent spilling of the breast milk.

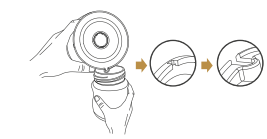
1. When you finished expressing, long press the power button to switch off the pump and break the seal between the breast and the pump funnel with your finger, and then carefully remove the pump from your breast.



2. Separate the milk collector from the pump motor; the collected milk is ready for feeding/storage. Clean the other used parts in line with the instructions.



3. Pour the milk into the storage bottle; make sure the slot feature is aligned with the bottle.



Storing your breast milk 12

Storing breast milk

1. Only store breast milk collected using sterilized breast pumps.
2. The extracted milk can be placed in a clean and sterilized milk storage bag or a milk bottle with a sealing cushion, and immediately placed in the refrigerator to refrigerate or freeze.

Breast milk cold storage

1. Breast milk should not be frozen more than once.
2. Do not mix fresh breast milk with frozen breast milk.
3. Be sure to discard leftover breast milk.
4. The extracted milk can be refrigerated in the refrigerator for 48 hours (inside the refrigerator) or frozen in the freezer for three months; the milk bottle or milk storage bag should be affixed with a label clearly marking the collection date and time.

Unfreezing breast milk

Place the frozen breast milk in the refrigerator compartment for one night to thaw. If you need to defrost milk urgently, you can use a bowl of hot water to let the breast milk thaw. After thawing, breast milk must be consumed within 24 hours.

Heating breast milk

1. Put the baby bottle in a bowl of hot water vertically or heat the breast milk safely and quickly with a baby bottle and food heater.
2. Keep in mind! Before feeding your baby, be sure to check the temperature of the breast milk.

3. Do not use a microwave oven to heat breast milk, because this may destroy valuable nutrients and antibodies.
4. In addition, uneven heating may cause partial overheating of the liquid, which may cause burns.
5. Do not immerse the milk storage bottle in boiling water to heat – the bottle might rupture or crack.

innogio

Importer: **INNOGIO** sp. z o.o.
Ostródzka street 74H, 03-289 Warsaw, Poland

www.innogio.com

@innogio.official @innogio_com

