

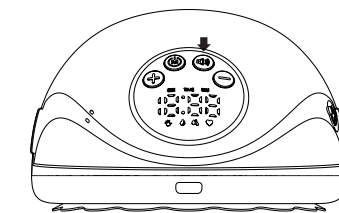

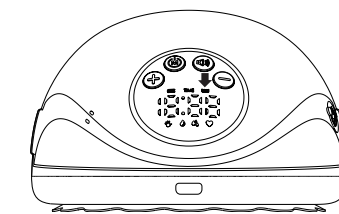


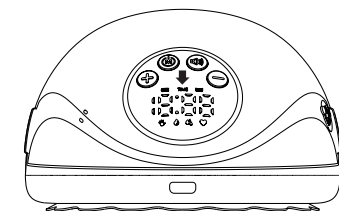
7. Voice ON/OFF button: By default, the voice is off after you turn on the device. Short press  to turn the sound on or off. After you press the mode button or the level up and level down buttons, a voice message will be communicated . If you press and hold the same level up or level down button, it will not be communicated. If the level is maintained for more than one second, a voice message will be communicated again. Expression time will be communicated every 10 minutes, and the device will automatically shut down with or without a voice message after the end of expression.



8. Milk level monitor: Long press the voice on/off button to turn on the sensor detection, the  icon will light up, and the expression time will be communicated once every 10 minutes. It will automatically turn off after it is full. (This feature is optional)



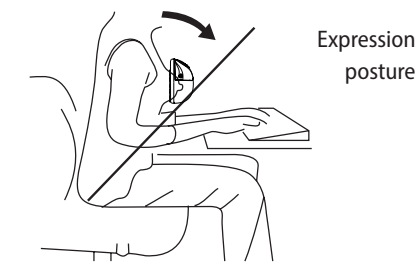
9. Level/time display: the default upshift is by 1 level, and the display reads „1”; There is a total of 12 levels. It is recommended to start with the massage mode during the first use and increase the level per your own comfort level. After the selected level is on for 5 seconds, it goes into the timer mode, the „TIME” display is on, and the time is measured in „Minute/Second”.



10. After you finish expressing milk, use the power button to turn off the device, lean forward slightly, and carefully remove the breast pump. If there is a small amount of breast milk left over in the silicone breast shield, gently pour the remaining breast milk from the silicone breast shield into the bottle by tilting the breast pump.



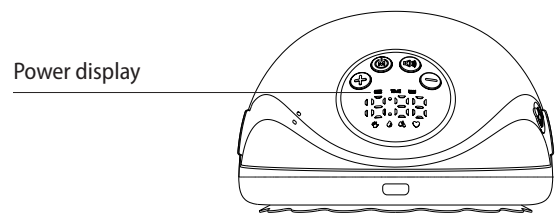
Relax and sit in a comfortable chair while slightly leaning forward (use cushions for back support). This position allows the top of the silicone breast shield to be tilted slightly upwards, which facilitates the flow of breast milk into the collector and reduces the amount of residual milk in the silicone breast shield.



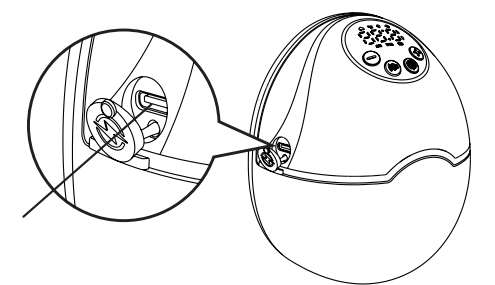
Charge

Power display:

1. The blue light flashes (when the battery voltage is 3.2V), indicating that the device should be charged as soon as possible; when the power is too low, the device will turn off automatically (when the battery voltage is 3V);
2. During charging, the blue and green lights flash interchangeably; the light turns to green when the device is fully charged.
3. When the battery is charged, the green light is on; the blue light turns on at 30%-70%.



Open the USB cover to insert the USB cable, and connect the adapter at the other end to charge the motor.



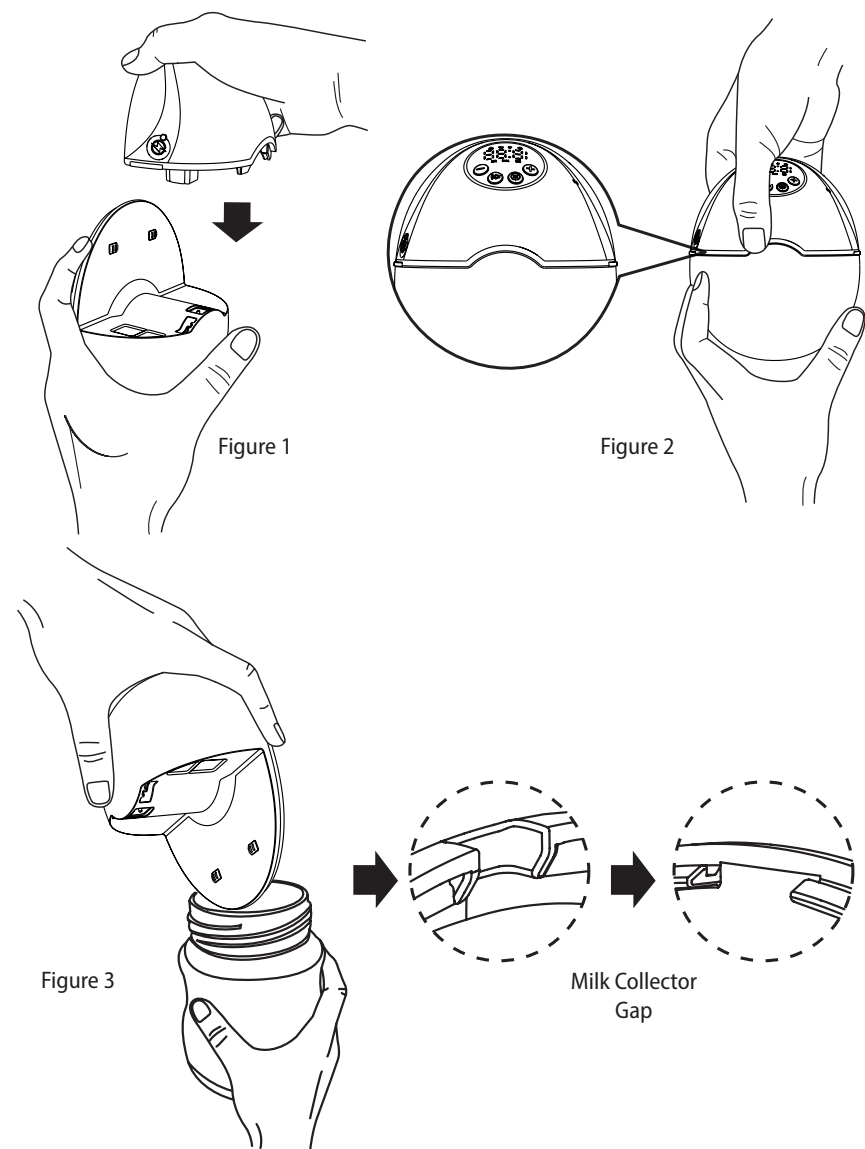
USB Charging port

Please note:

1. You cannot use the device while it is charging.
2. This device has a memory function, when you turn it on, it will automatically enter the most recently used working mode and suction level.
3. The device turns off automatically after operating for 20 minutes.
4. Time of continuous operation varies depending on the battery or the working conditions.
5. Charging time may vary depending on remaining power, temperature, or charging conditions.
6. A USB power adapter is a standard commonly available accessory. It is not included and it can be purchased separately if required. Power adapter specification: 5V-1A.

Instructions For Pouring Breast Milk

After pumping, remove the breast pump from your breast and hold the breast pump upright. Then remove the pump motor, and pour the collected breast milk into the bottle, making sure the grooved part of the milk collector is aligned with the mouth of the bottle to prevent milk from spilling.



Device parameters

Product name	InnoGIO GIOluna Maxi Flow- electric breast pump
Product model	GIO-362I
Charging voltage	DC5V-1A
Charging current	730mA
Battery type	Polymer battery
Battery capacity	1200mAh
Rated voltage	3.7V
Rated current	1A Max
Operating time	>2H
Noise limit	≤50dB
Extraction intensity limit	40mmHg-300mmHg
Working environment	10-30°C, RH15%-93%, 700-1060hPa
Storage and transportation environment	-25-50°C, RH15%-93%, 700-1060hPa

Storing Your Breast Milk

Caution

1. Do not freeze breast milk repeatedly.
2. Do not mix fresh breast milk with frozen breast milk.
3. Discard any remaining breast milk after feeding

Note: Only store breast milk collected with a sterilized breast pump.

Storing Your Breast Milk

Expressed milk can be placed in a clean, sterilized storage bag or bottle with a seal. Refrigerate or freeze immediately.

Caution: Expressed milk can be refrigerated for up to 48 hours or frozen for up to three months. Clearly label the bottle or storage bag with the date and time of expression. Consume the first expressed milk first.

Thawing breast milk:

To defrost frozen breast milk, keep it in the freezer of your refrigerator overnight. In case of emergency, you can thaw breast milk in a bowl of hot water. After thawing, breast milk should be consumed within 24 hours. To heat breast milk, place the bottle upright in a bowl of hot water, or use a bottle and food warmer to safely and quickly heat it.

Warning:

1. Remember! Always check the temperature of your breast milk before feeding your baby!
2. Do not microwave breast milk, as this can destroy important nutrients and antibodies.
3. Additionally, uneven heating may cause localized overheating, which may cause burns.
4. Do not heat the milk storage bottle by immersing it in boiling water, as this may cause cracking.


GIO-362I


innoGIO


GIÖluna Maxi Flow


Wearable electric breast pump


 Scan QR code to download the manual for GIO-362I

 Zeskanuj kod QR, aby pobrać instrukcję do GIO-362I


 Scannen Sie den QR-Code, um das Handbuch für die GIO-362I

 Scannez le code QR pour télécharger le manuel de GIO-362I


 Escanee el código QR para descargar el manual del GIO-362I


 Scansiona il codice QR per scaricare il manuale di GIO-362I


 Scan de QR-code om de handleiding voor GIO-362I te downloaden.


 Відскануйте QR-код, щоб завантажити інструкцію для GIO-362I


 Naskenujte QR kód a stáhněte si manuál pro GIO-362I

 Naskenujte QR kód a stiahnite si manuál pre GIO-362I


 Scanați codul QR pentru a descărca manualul pentru GIO-362I

 Nuskaitykite QR koda, kad atsiisqstumete GIO-362I naudojimo instrukcija.

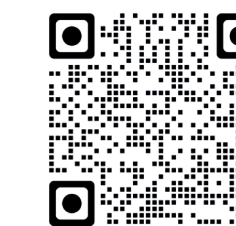
 Skannige QR-kood, et alla laadida GIO-362I kasutusjuhend.

 Nolasiet QR kodu, lai lejupieladētu GIO-362I lietošanas instrukciju.

 A GIO-362I felhasználói kézikönyv letöltéséhez olvassa be a QR-kódot.

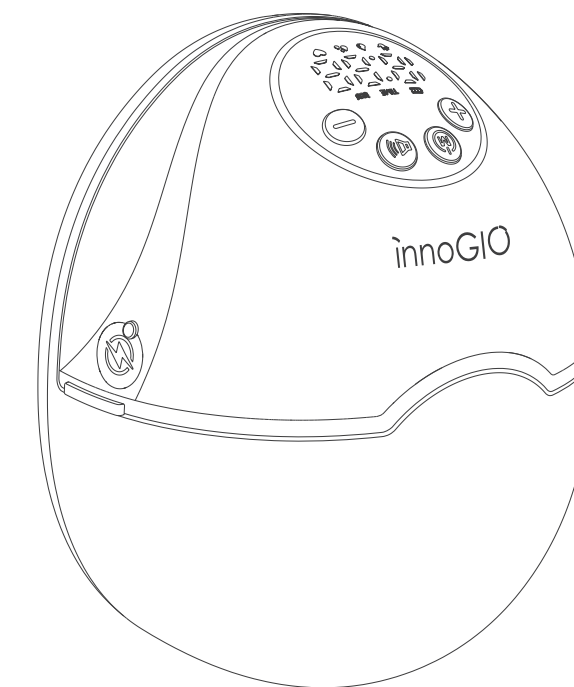
 GIO-362I ليلد ليليزنكل ءءورسلا ءءا ءءسالا زءر ءءءا

INNOGIO sp. z o.o.
Ostródzka street 74H, 03-289 Warsaw, Poland
www.innogio.com



GIÖluna Maxi Flow

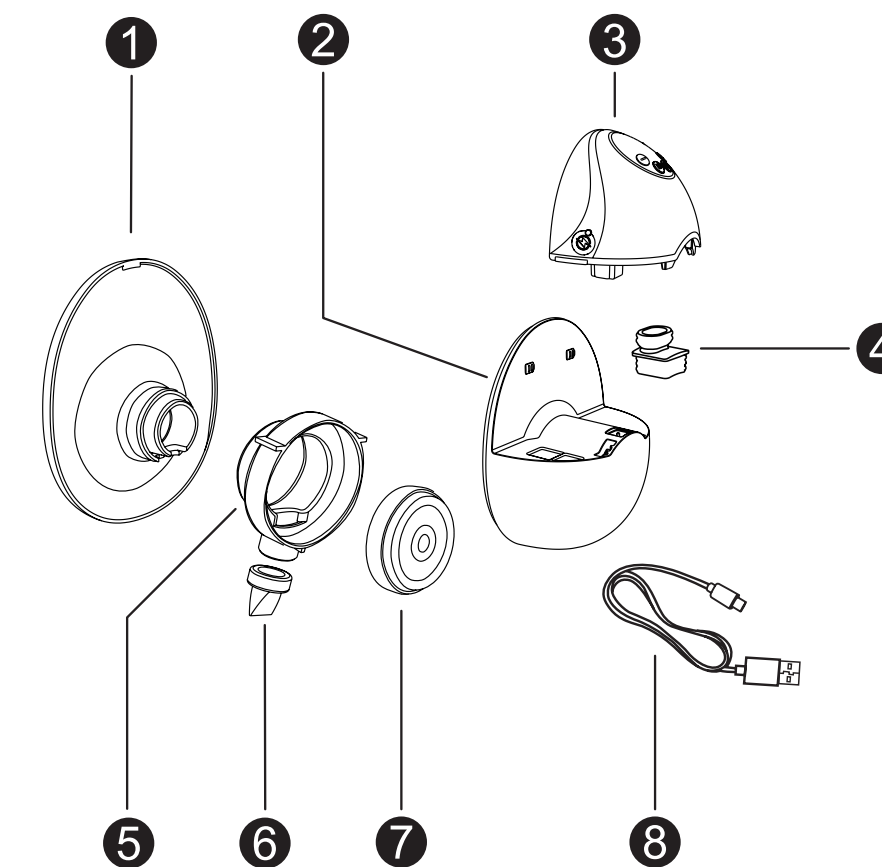
Wearable electric breast pump



USER MANUAL

Read this user manual carefully before use

Product Structure

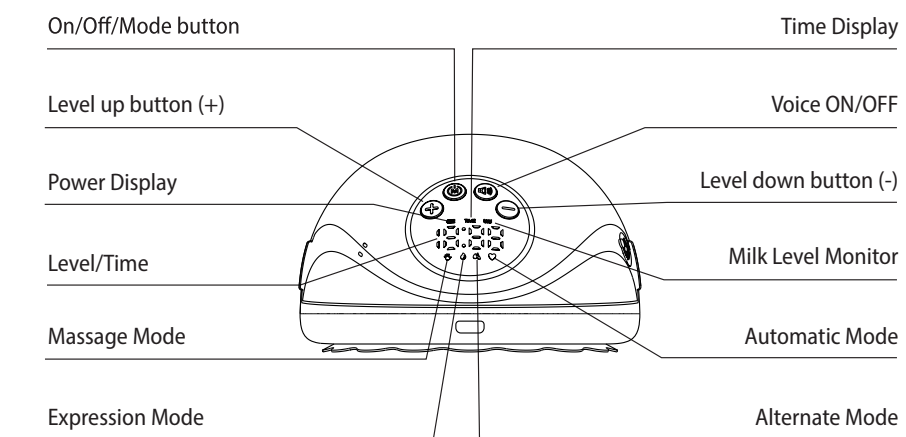


Parts List:

- | | |
|------------------------------|----------------------------|
| 1. Silicone breast shield x1 | 5. T-junction x1 |
| 2. Milk collector x1 | 6. Duckbill valve x1 |
| 3. Pump motor x1 | 7. Diaphragm x1 |
| 4. Silicone plug x1 | 8. USB-C Charging cable x1 |

2

Control Panel



Note: This device has a built-in lithium battery. When the battery indicator light flashes blue, we recommend that you use a certified 5V-1A power supply to charge the main unit as quickly as possible.

Cleaning and Disinfection

- Before each use, disassemble, wash, and disinfect the parts which come into contact with breast milk (milk collector, silicone breast shield).
- The duckbill valve should not be disassembled and washed separately to avoid losing the part, as it would affect the normal use of the breast pump.
- Disassemble and clean the parts that come into contacting with your breast and breast milk immediately after you finish using the device to avoid breast milk residue and bacterial proliferation.
- It is recommended to clean the device with drinking water.

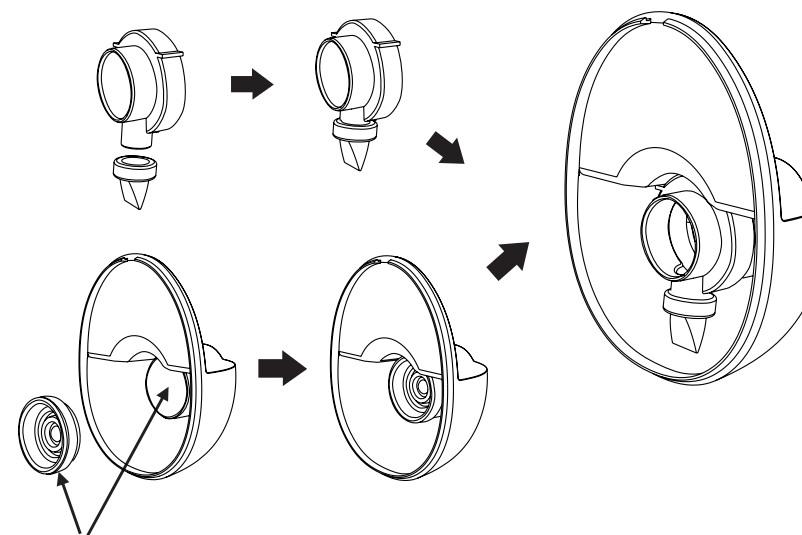
Precautions for use

- Never wash or disinfect the pump motor, as breast milk does not come into contact with it. You can wipe this part clean with a soft cloth.
- Clean the silicone breast shield carefully, if you damage it, the breast pump will not work properly.
- Clean the milk collector. Do not rub it, do not put anything inside – otherwise you might damage it. It is recommended to clean it with drinking water.
- The duckbill valve should not need to be disassembled and washed separately to avoid losing the part, as it would affect the normal use of the breast pump.

3

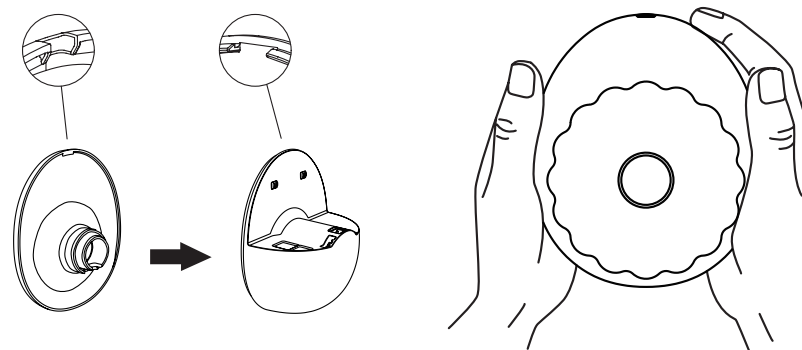
Assembling the device

- Assemble the duckbill valve and the diaphragm in place as shown in the figure below. Make sure the duckbill valve is correctly positioned, and insert the T-junction into the milk collector as shown in the figure below. (Make sure it is correctly positioned)



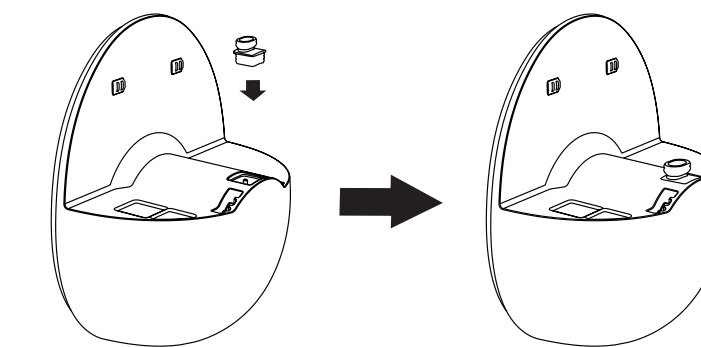
Note: Make sure the inside of the diaphragm and the milk collector is dry.

- To install the silicone breast shield on a milk collector, make sure the diversion groove on the silicone breast shield is aligned with the return groove on the milk collector and press the edges with both hands to ensure the seal is in place.

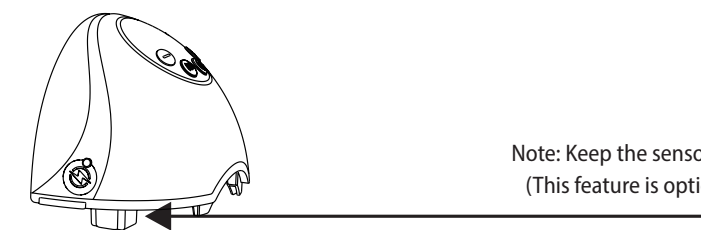


4

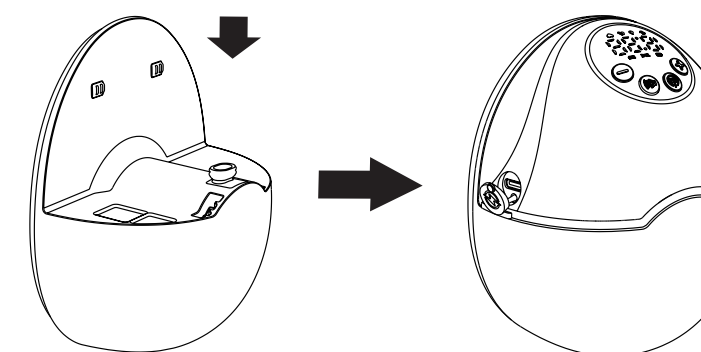
- Insert the silicon plug into the milk collector and press it down to make the surfaces flush and create a perfect seal.



- Mount the pump motor onto the milk collector, align the groove under the pump motor with the milk collector, and push the milk collector downwards to ensure a perfect seal.



Note: Keep the sensor dry
(This feature is optional)

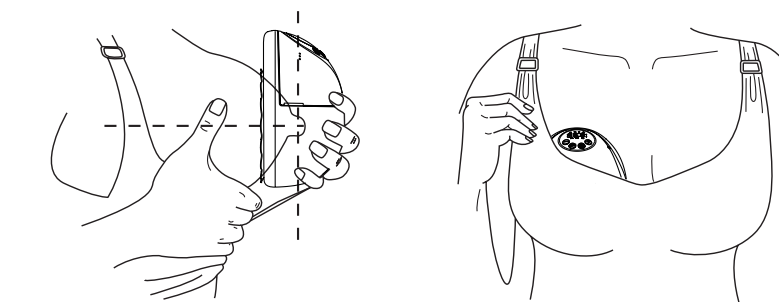


Please note: Power adapters are a standard commonly available accessory. It is not provided with the breast pump and, if necessary, can be purchased separately. Power adapter specification: 5V-1A.

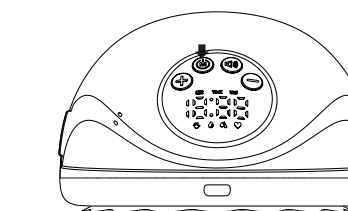
5

Pumping Guide

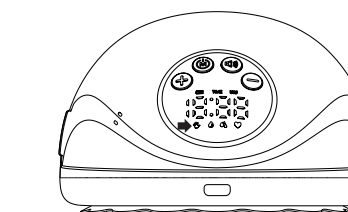
- Press the silicone breast shield firmly against your breast and make sure your nipple is centered. Keep it upright. Be careful not to change the position of the device and your chest, otherwise the breast pump will not have suction.



- Long press for two seconds to turn on the breast pump, and then long press it again for two seconds to turn it off. The breast pump will turn off automatically after 20 minutes of operation and the display will turn off after 15 seconds of operation. Pressing any button will wake up the device.

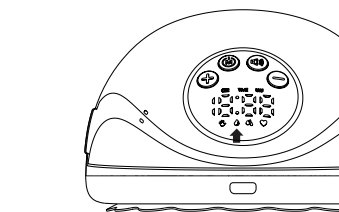


- Short press the button to select the massage mode . This mode is faster than the expression mode and has lower suction power. During postpartum breastfeeding, breasts are prone to swelling, pain, lumps, and other causes of discomfort. Using this mode can help alleviate these issues.

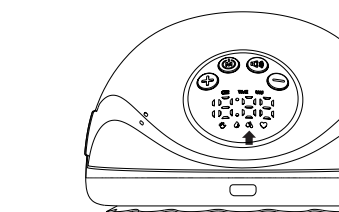


6

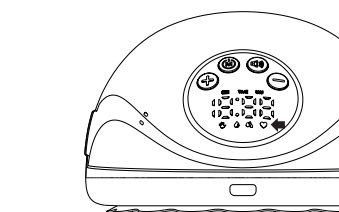
- Short press the button to select the expression mode . This mode is slower than the massage mode, but it has greater suction power, and accurately simulates the baby's sucking, which help stimulate even smoother milk production. .



- Short press the button to select the alternate mode . In this mode, the breast pump alternates between one long pull and nine short ones. Sometimes shortly after childbirth, the milk ducts can become blocked. In this mode, the breast pump stimulates the breasts and helps encourage milk flow.



- Short press the button to select the automatic mode . This mode is somewhere in-between the massage mode and the expression mode. The suction power is stable. In this mode, the power will increase by one level every 15 seconds and then stay at the 9th level. During the upshift process, you can use the level up and level down buttons to stop the upshift.



7