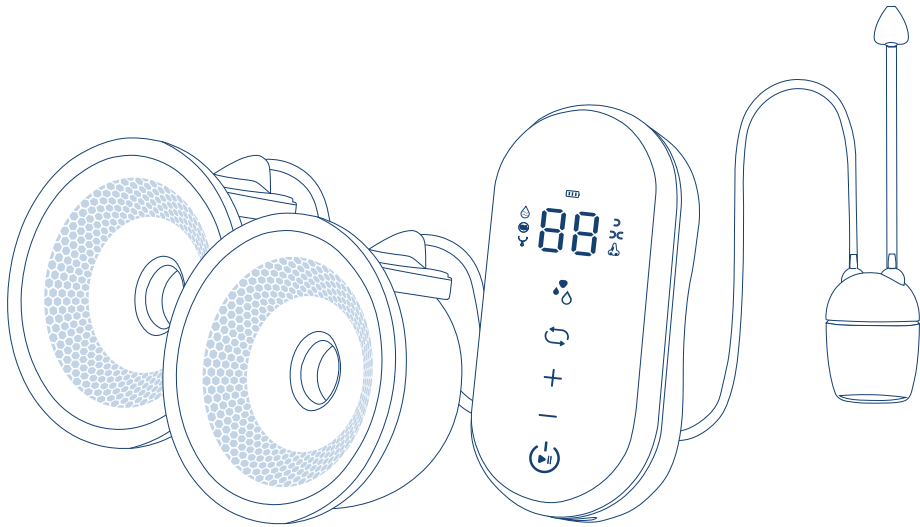


GIO-360 | EN

innoGIO



GIOmum Line Soft

Double electric breast pump
with nasal aspirator

INSTRUCTION MANUAL

PLEASE READ INSTRUCTIONS CAREFULLY BEFORE USING THE PRODUCT AND KEEP THE MANUAL FOR FUTURE REFERENCE.

INTRODUCTION

Best way for your baby's health is to feed your baby with breast milk everyday. But sometimes it is not convenient for the mother to feed the baby directly; you can choose **Double electric breast pump with nasal aspirator GIOmum Line Soft GIO-360**.

GIOmum Line Soft – double electric breast pump with nasal aspirator imitates baby's sucking, it can make stimulates breast milk to secrete more, soothes breast pain (due to full milk). Pump milk to freeze, and exclusively breastfeed your baby when the mother is away from home or at work. Supports nasal suction during periods when the baby is sick.

FEATURES

- The Double pump increases efficiency and reduces pumping time.
- Hands-free funnel, fits bra, no need to hold when pumping.
- Can be single or double suction. Intuitive, easy-to-use symbols.
- 2 in 1: Breast pump with nose suction function, full of tools, easy to install and clean.
- Soft silicone nose aspirator, comfortable for baby.
- LED controls with touch buttons.
- Strong & smooth pumping with 3 suction modes: Massage mode / Stimulation modes / Expression mode (9 levels).
- Large rechargeable battery capacity up to 2200 mAh for a long period per time use.
- Anti-backflow device with one-way valve.
- Rechargeable battery.

3 SUCTION MODE

● Massage Mode:

All levels at massage stage work at regular and moderately rhythm with medium suction in order to stimulate milk effectively. At massage mode, the pump has 9 levels to choose; with a higher level, the sucking power will increase accordingly, and the suction will become more relaxed and vigorous, and the time of sucking is also longer. The pump turns up the suction level with press power button.

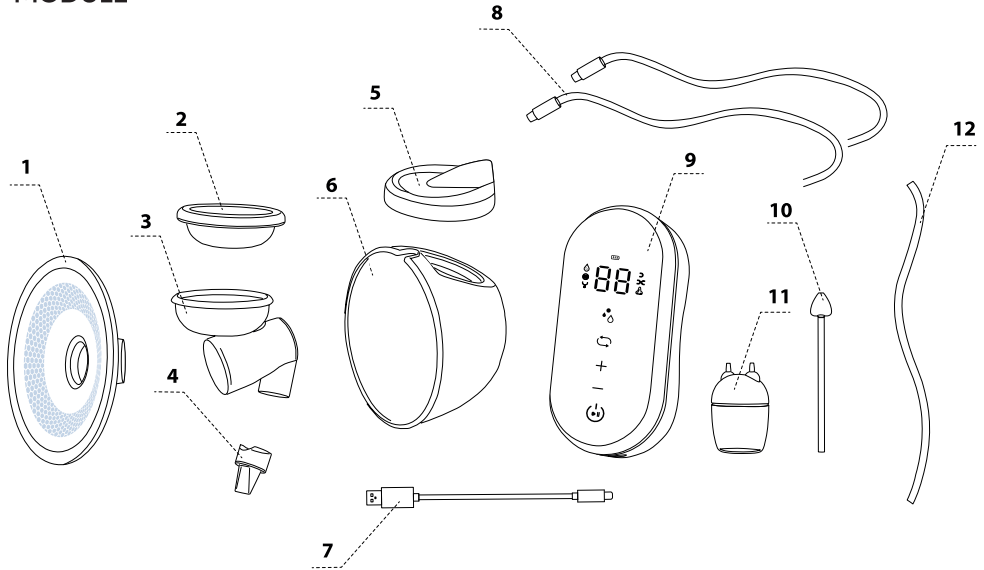
● Expression Mode:

All levels at expression stage work at regular and moderately rhythm with strong suction in order to suck milk effectively. At expression mode, the pump has 9 levels to choose; with a higher level, the sucking power will increase accordingly, and the suction will become more relaxed and vigorous, and the time of sucking is also longer.

● **Stimulation Mode:**

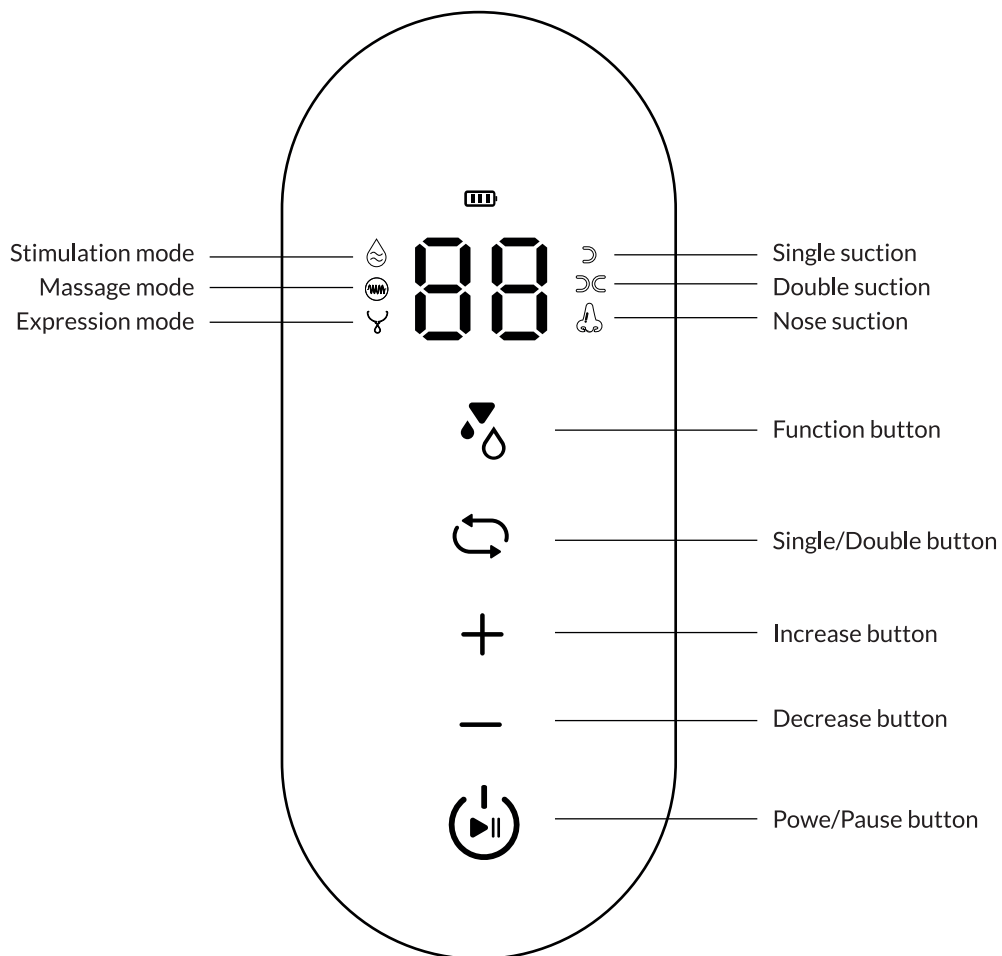
In stimulation mode, the pump has 9 levels to choose from. At each level, it adopts three light suction in a row and one heavy stimulation rhythm, which means three times of massage and one time of expression. That helps to stimulate the release of milk.

MODULE



No.	Name	Quant.	Materials	Heat resistance
1	Breast shields 24 mm	2	Silicone	~ 180°C
2	Silicone Suctions	2	Silicone	~ 180°C
3	Linkers	2	Polypropylene (PP)	~ 120°C
4	Suction Valves	2	Silicone	~ 180°C
5	Upper Covers	2	Polypropylene (PP)	~ 120°C
6	Milk collectors	2	Polypropylene (PP)	~ 120°C
7	USB cable	1	xx	xx
8	Air tubes	2	Polyvinyl Chlorua (PVC)	~ 120°C
9	Motor	1	xx	xx
10	Nose suction tube	1	Silicone	~ 180°C
11	Nose fluid cup	1	Polypropylene (PP)	~ 120°C
12	Nose air tube	1	Polyvinyl Chlorua (PVC)	~ 120°C

LED SCREEN



SPECIFICATION

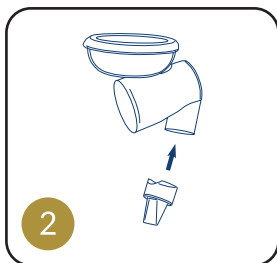
- Power sources: 100-240V ~ 50/60Hz with AC adapter DC 5V - 1A (not included)
- Power: 5W; Battery capacity: 2200 mAh
- Vacuum max.: 315 mmHg \pm 7.5 mmHg
- Overall noise: 0,63 kg
- Storage temperature: 5° to 40°C
- Storage humidity: 10% - 90% RH
- Atmospheric pressure: 850 Hpa - 1060 Hpa



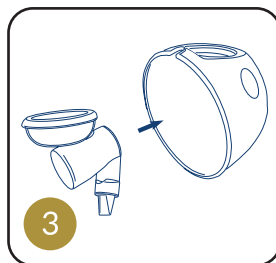
ASSEMBLING STEPS



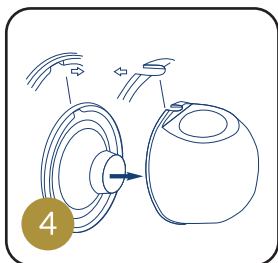
Step 1 Put the silicone suction cups (2) onto the linker (3). Press around the edges of the suction silicone to cover the linker completely.



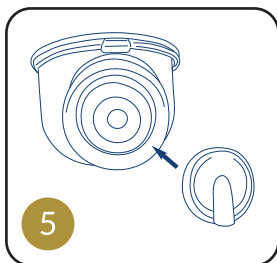
Step 2 Push the suction valve (4) securely onto the bar of the linker (3).



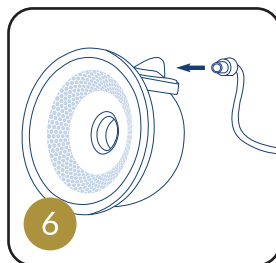
Step 3 Place the linker (3) into the internal slot of milk collector (6). Push the linker and make it get stuck in the slot.



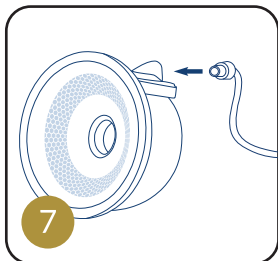
Step 4 Put the breast shield (1) to the milk collector (6). Align the spout of breast shield and the collector.



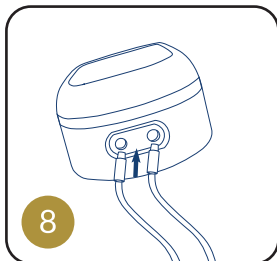
Step 5 Put the upper covers (5) to the milk collector (6).



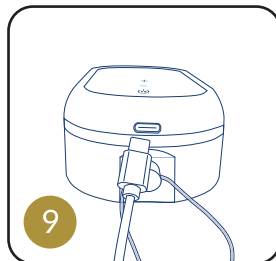
Step 6 Connect one end of the first air tube (8) to the upper cover (5) for the first milk collector.



Step 7 Connect one end of the second air tube (8) to the upper cover (5) for the second milk collector.

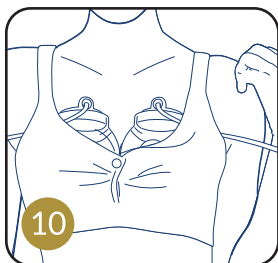


Step 8 Connect the other 2 ends of both air tubes (8) to the 2 air holes of the motor (9).

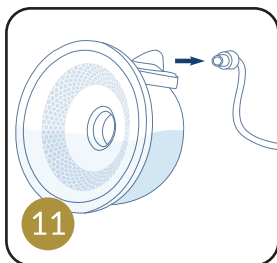


Step 9 Use the USB cable (7) to charge the motor (9) before or after each use.

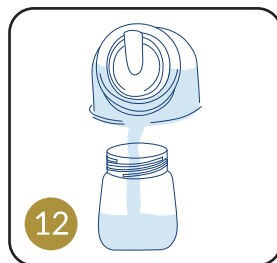
ASSEMBLING STEPS



Step 10 Place 2 breast shields inside the bra. Make sure the breast shield is pressed against the mother's chest and the air tube is not blocked.




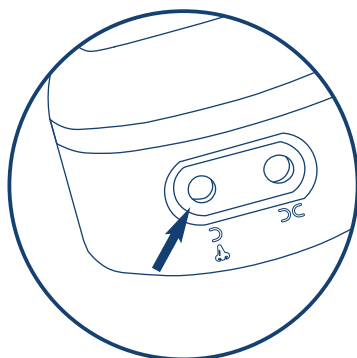
Step 11 After pumping, take out the air tubes (8).



Step 12 Pour the breast milk inside the milk collector (6) into a storage bottle.

Notes:

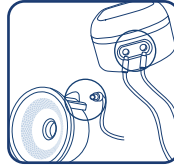
- For **single suction** , please connect to the left air hole. This is the default position for single suction, the right air hole cannot be used for suction.
- The suction symbols has been shown specifically next to each air hole.



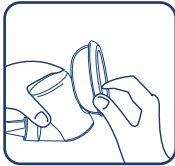
SUCTION CHECKING & SOLUTIONS



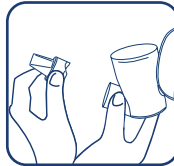
Please make sure the breast shield covers your breast tightly.



Ensure the air tube connectors are attached tightly.



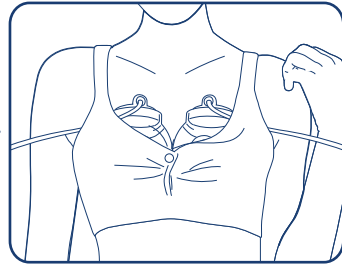
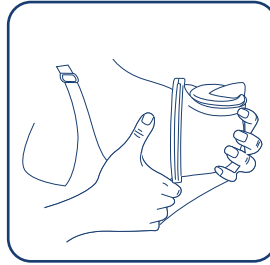
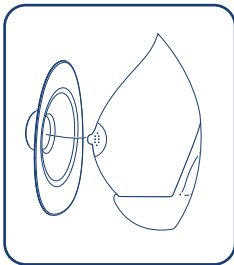
Check if the suction silicone (2) is fitting tightly with the linker (3).



Check if the suction valve (4) is fitted and properly positioned with the bar on the linker (3).

IMPORTANT NOTICE

To avoid leakage, please follow the below instructions.



Correct nipple alignment in the Breast Shield is the key to comfort, expression and performance. The nipple must be correctly in the breast shield tunnel before pumping to avoid discomfort.

Use posture instructions

The best breastfeeding position is to sit upright and lean forward slightly. When sitting and standing, leaning forward can easily suck out the milk. In this state, the mother can feel more comfortable. Lying down and pumping will cause the position of the breast shield on the breast pump. Lying down for pumping will cause the breast cover on the breast pump to be lower than the milk leakage port, and the milk will flow back and cannot be sucked out normally. The following is the posture chart of using the breast pump.



Sitting upright is also a good breast pumping position, which can be selected according to your own situation.



Leaning back and not doing a good job of pumping, which may cause breast milk to leak, so it is not recommended.



Sitting straight and leaning forward is the most ideal breastfeeding position.








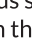

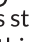


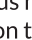

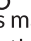
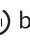



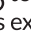


Breastfeeding cannot be done using the lying down or side lying position, which should not be used.

INSTRUCTIONS FOR USE

1. Sterilize milk-contact parts of the breast pump.
2. Clean your hands, then assemble the sterilized components by following the ASSEMBLING STEPS.
3. Sit down with the most comfortable posture with the upper body lean a little forward.
4. Gently massage your breast, or compress the breast with a warm towel.
5. Put the nipple into the massage cushion pad so as the shield could cover tightly the breast.

PUMPING GUIDE

1. Massage / Stimulation / Expression mode:

- Touch and hold the  button for 2 seconds to see the LED light turn on and the pump automatically starts the single mode  with the suction mode and the level memorized from the previous use. The time LED screen shows „00” and starts to count the working time. Touch the Single / Double button  to change to the Double suction .
 - Touch the function button  to choose the stimulation mode and start with the level memorized from the previous stimulation mode with  symbol. Use buttons  and  to select the suction level on this stage (L1, L2, L3, L4, L5, L6, L7, L8, L9). There are 9 levels of stimulation. Short touch the  button to pause the pump.
 - Touch the function button  to switch to the massage mode and start with the level memorized from the previous massage mode with  symbol. Use buttons  and  to select the massage level on this stage (L1, L2, L3, L4, L5, L6, L7, L8, L9). There are 9 levels of massage. Touch the  button to pause the pump.
 - Touch the function button  to switch to the expression mode and start with the level memorized from the previous expression mode with  symbol. Use buttons  and  to select the expression level on this stage (L1, L2, L3, L4, L5, L6, L7, L8, L9). There are 9 levels of expression. Touch the  button to pasue the pump.
2. The pump is automatically turned off after 30 mins working.
3. Long touch the  button for 2 second to turn OFF the pump.

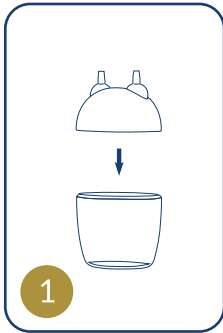
CAUTION

1. Sterilize all separated components before and after each use.
2. Try to familiarize yourself the suction control of the breast pump before using it.
By placing the funnel against your hand or arm, you can practice using this breast pump.
3. Please ensure all parts are free of cracks and no misfits, especially the valve head fitting with the shield body as this will affect the suction of the breast pump.
4. Contact your health care professional or breastfeeding specialist if you can express only minimal or no milk, or if expression is painful.
5. This is not a toy, please keep out of reach of children.
6. DO NOT place the product next to heat sources such as radiators, sunny windows, etc.

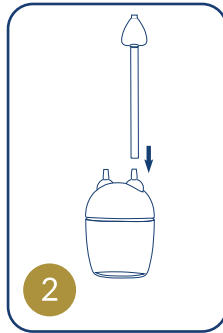
ADVISES:

- If your milk doesn't flow, relax and reposition the breast shield on your breast then continue pumping.
- Don't continue pumping for more than 5 minutes if you do not succeed in expressing any milk. Try to pump at another time.
- Consult your lactation advisor or physician if you feel uncomfortable or painful during pumping.
- It is more effective and better for your breasts when you pump frequently (every 2-3 hours).
- Always use an AC adapter where possible instead of battery operation for best results.

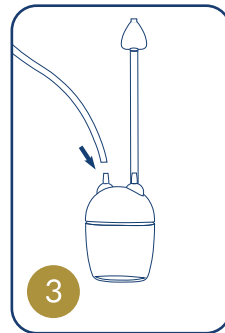
NOSE SUCTION GUIDE



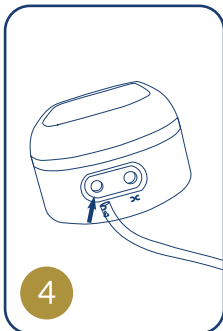
Step 1 Put the cap with the body of the nose fluid cup (11) together.



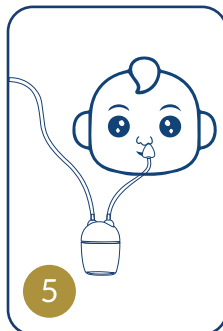
Step 2 Insert the nose suction tube (10) onto the first hole of the nose fluid cup (11).



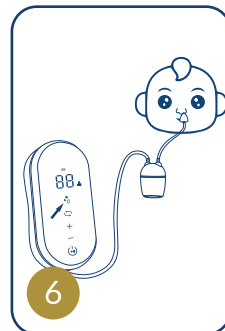
Step 3 Insert the nose air tube (12) onto the remaining hole of the nose fluid cup (11).




Step 4 Connect the order end of the nose air tube (12) to the left air hole of the motor (9).


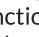


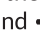
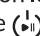


Step 5 Place the other end of the nose suction tube (10) into your baby's nose, whichever is most comfortable.



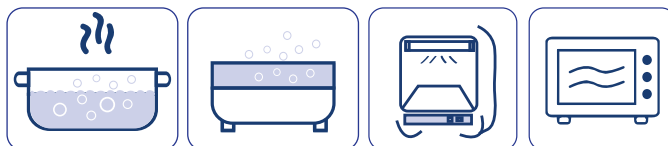
Step 6 Touch the  button, then touch the function button  to select the nose suction mode .

Nose suction function:

1. Make sure nose suction tube, nose air tube and nose fluid cup are sterilized before and after sucking your baby's nose.
2. Make sure all connections are tight, increase suction efficiency.
3. The left air hole is the default for nose suction mode, the right air hole cannot be used.
4. Touch the Power / Pause button , then touch the function button  to select the nose suction mode . Adjust the suction level to suit the baby, but still ensure the suction effect. Use buttons  and  to select the suction level. There are 9 levels of the nose suction (L1, L2, L3, L4, L5, L6, L7, L8, L9). Touch the  button to pause the pump.

CLEANING THE PUMP

Disassembly all the components of the breast pump and thoroughly wash using clean warm soapy water. We recommend sterilizing the product by putting them in boiling water for about 2-3 minutes or by using the steam sterilizer / UV sterilizer / microwave. Then dry all parts and keep them in a cool and dry place.



Boiling water

Steam sterilizer

UV Sterilizer

Microwave



Plastic parts may be damaged or deformed if exposed to high temperatures for a long time.

POWER SUPPLY

Insert the DC connector of the USB line into the USB socket adaptor, insert the adaptor plug in into the power socket.



Only use the original AC adapter. Other adapters may cause damage to the unit.

LITHIUM-ION BATTERY

This model has a built-in Lithium-ion rechargeable battery, which makes it even easier to transport, as you can simply plug in to charge when required. The battery must be fully charged before the first use. Do not charge the battery pack for a long time. Charging 4 hrs can use more than 2 hrs (The inside lithium battery is forbidden to take out). When the battery symbol flashes, it means the power is low, please charge it in time.

Notes:

- When the motor works without main power, power state will be displayed.
- If the lithium battery is now used for a long time, it will cause the battery to be deeply discharged.
- If the breast pump is out of battery, it needs to be plugged into the power supply for activation. Wait for about 10 mins for the screen to light up to continue charging. If the battery is not activated for more than half an hour, please consult the InnoGIO customer service.

This product adopts USB charging mode, can charge with adapter / computer and power bank.

More easy to use when out, more convenient for mom to use.

HOW TO STORE BREAST MILK

The milk collecting bottle is ready to serve. In case, it is not possible to feed directly to baby, fresh breast milk should be stored in a dated, clean, sealed container. Milk bottle or milk bag can be used.

Guidelines for maximum storage time of breast milk.

	Freezer (~ -18°C)	Refrigerator (~ -4°C)	Ice Pack (~ -15°C)	Room Temperature (22~26°C)
Fresh	3 months	1 day	8 hours	3-4 hours
Unfreeze in Fridge	Do not refreeze	1 day	Do not store	3-4 hours
Unfreeze in warmed water	Do not refreeze	4 hours	Do not store	Feed to baby in short time until feeding ends

Notes:

- Do not store milk in hot weather.
- Do not use warmed water that's higher 60°C for unfreeze breast milk.
- Do not microwave breast milk.
- Do not add fresh milk to frozen breast milk.

TROUBLE SHOOTING

	Causes	Check & Solutions
Non-working motor	Power	<ul style="list-style-type: none"> • Check the AC adapter is firmly plugged to main power and the main unit. • Check if the power is turned on. • Contact the InnoGIO Distributor if the pump does not function when the power is turned on.
	Battery	Check if this symbol flashes, please charge the battery.
Low or no suction	Incorrect assembling	<ul style="list-style-type: none"> • Check that no parts are missing. • Make sure the silicone massager is sealed around the rim of breast shield funnel. • Fit the vacuum set and breast shield tightly. • Check if the silicone ring is properly positioned. • The silicone valve a firmly placed. • Check if the silicone tube is connected to the main unit. • Screw the pump onto the bottle tightly.
	Damaged parts	Check that any all parts are intact and free of defects such as crack, check frequently for the silicone valve. For spare parts, contact the InnoGIO to obtain the replacement.
	Air escape on the your breast	<ul style="list-style-type: none"> • Press breast shield with silicone massager firmly against your breast. • Reposition breast shield on your breast.
Discomfort or pain	<ul style="list-style-type: none"> • Adjust the lower suction pressure. • Change the position of the breast shield on your breast. • If pain persists, consult your lactation advisor or physician. 	

This appliance should not be put into the domestic garbage at the end of its useful life, but must be disposed of at a central point for recycling of electric and electronic domestic appliances.



innoGIO

Manufactured in China for **INNOGIO** sp. z o.o.
Ostródzka street 74H, 03-289 Warsaw, Poland
www.innogio.com

 @innogio.official

 @innogio_com