

**Manuals+**

User Manuals Simplified.



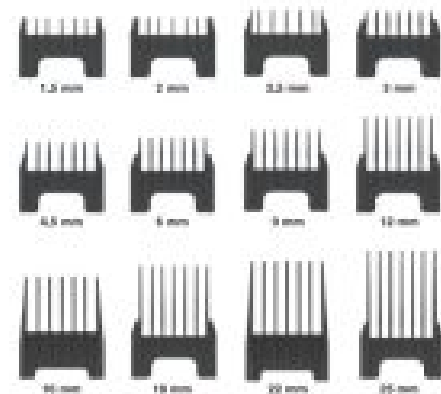
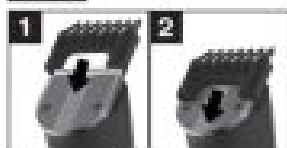
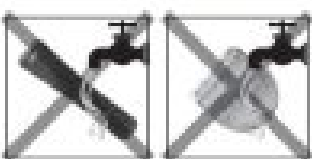
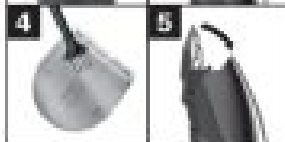
## Wahl 1661.0465 Trend Cut Machine for Hair Cutting User Guide

November 20, 2021 November 23, 2021

[Home](#) » [WAHL](#) » Wahl 1661.0465 Trend Cut Machine for Hair Cutting User Guide 



1661 LITHIUM•ION  
PRODUCT GUIDE  
part no: 1661.1003

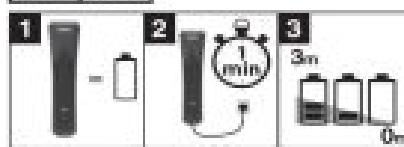
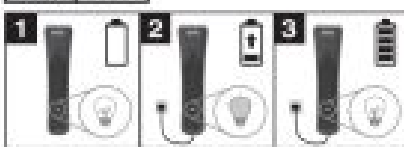
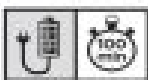
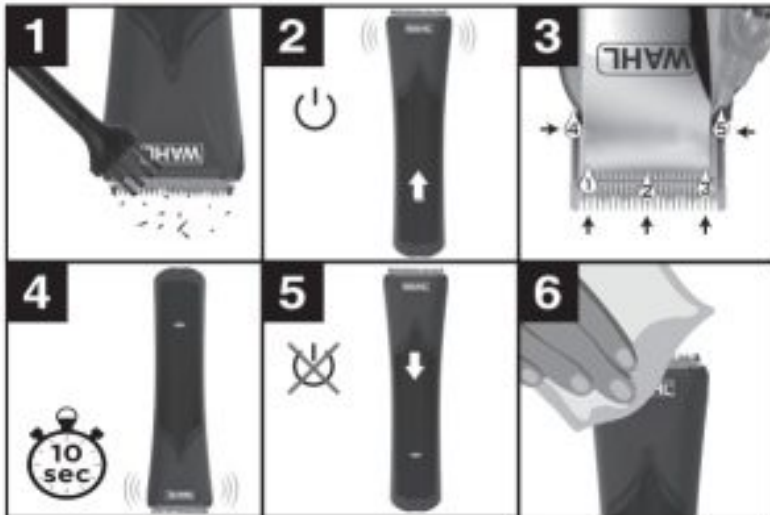
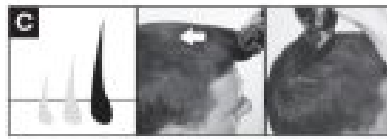
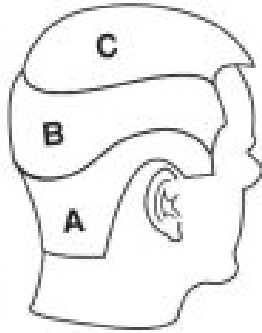


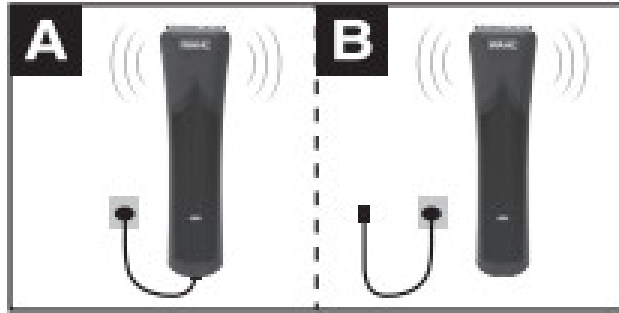
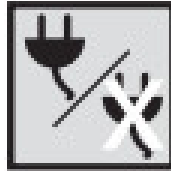
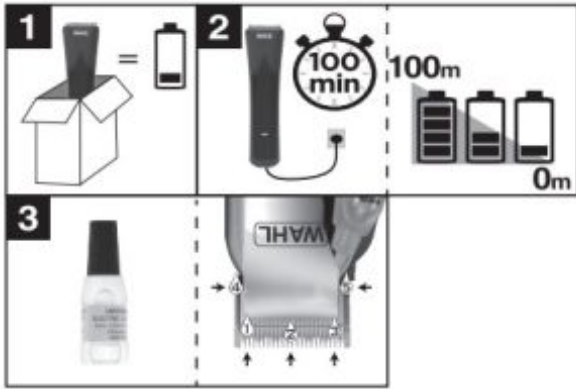


20 mm



1 mm





LITHIUM-ION  
**WARNINGS AND DANGERS**  
 part no: 95822-600  
 1003708 | 1900.1025

CUSTOMER SERVICE CENTERS

USA- HEADQUARTERS  
 WAHL CLIPPER  
 CORPORATION  
 World Headquarters  
 P.O. Box 578. Sterling, IL 61081

ARGENTINA  
 Wahl Argentina  
 Av. Alvarez Jonte 5655  
 Buenos Aires (C1407GPK),  
 Argentina  
 Tel./Fax: (011) 4648-1850 (líneas rotativas)  
 WhatsApp: +54 116809-9549  
[wahl@wahlargentina.com](mailto:wahl@wahlargentina.com)  
[www.wahlglobal.com](http://www.wahlglobal.com)

AUSTRALIA  
 Wahl Australia PTY LTD  
 PO Box 456  
 Acacia Ridge Qld 4110,  
 Australia  
 Tel.: (07) 3272 4289  
 Fax: (07) 3272 4708  
[contactus@wahl.com.au](mailto:contactus@wahl.com.au)  
[www.wahl.com.au](http://www.wahl.com.au)

BRAZIL  
 Wahl Clipper Brasil  
 Rodovia Geraldo Scavone, 2300  
 UC 45. Pedregulho.  
 Jacaréi – SP. CEP: 12305- 490  
 Tel.: 0800 772 2560

DUBAI  
WAHL MEA FZCO  
Dubai Airport Free Zone  
P.O Box 371395, Dubai UAE  
Tel.: +971 42948775  
[info@wahl-mea.com](mailto:info@wahl-mea.com)

HUNGARY  
Wahl Hungária Kft  
H-9200 Mosonmagyaróvár  
Barátság u.6.  
Hungary  
Tel.: +36 /20 / 747 2123  
Fax: +36 / 96 / 578-249  
[info@wahl.hu](mailto:info@wahl.hu)

NEW ZEALAND  
Wahl NZ Limited  
PO Box 38 323  
Wellington Mail Centre  
Lower Hutt 5045, New Zealand  
Tel.: (04) 5898817  
Fax: (04) 5897430  
[unityagenciesnz@xtra.co.nz](mailto:unityagenciesnz@xtra.co.nz)  
[www.wahl.co.nz](http://www.wahl.co.nz)

SOUTH AFRICA  
Wahl Clipper (Pty) Ltd  
PO Box 2916 Bedfordview,  
Gauteng 2007 South Africa  
Tel.: 27 11 0860009245  
[reception@wahlsouthafrica.com](mailto:reception@wahlsouthafrica.com)

EUROPE  
Wahl International Consumer  
Group B.V.  
Engelenburgstraat 36  
7391 AM Twello  
The Netherlands  
Tel.: +31 (0)571-268375 (service)  
Fax: +31 (0)571-268361  
[service@wahl-consumer.com](mailto:service@wahl-consumer.com)

INDIA  
Wahl India Grooming Products  
Pvt Ltd.  
B-1002, 10TH Floor, B-Wing,  
Lotus Corporate Park, Off Jay  
Coach Flyover,  
Western Express Highway,  
Goregaon-East, Mumbai 400-063.  
Tel.: 1 800 3000 0765  
(TOLL FREE)  
[service@wahl-india.in](mailto:service@wahl-india.in)  
[www.wahlglobal.com](http://www.wahlglobal.com)

RUSSIA  
Представительство в РФ и РБ:  
ООО УОЛЛ Рус  
Ракетный бульвар, д. 16  
129164 Москва / Russia  
(Россия)  
Тел.: (495) 967 67 27  
Факс.: (495) 967 68 27  
[info@wahlrus.ru](mailto:info@wahlrus.ru)  
<http://www.wahlglobal.com>

SPAIN  
Wahl Spain S.L.U.  
Fernando Giner de los Ríos 12  
46910 Sedaví  
Valencia, Spain  
Tel.: +34 902 103 735/  
+34 96 376 38 12  
Fax: +34 96 376 38 88  
[info@wahlspain.es](mailto:info@wahlspain.es)  
<http://wahlspain.es/>

UK  
Wahl (UK) Limited  
Sterling House, Clipper Close  
Ramsgate, Kent CT12 5GG  
United Kingdom  
Tel.: +44 01227 740066  
[customer.services@wahl.co.uk](mailto:customer.services@wahl.co.uk)  
<http://wahl.co.uk>

Contents [ [hide](#) ]

- 1 IMPORTANT SAFETY INSTRUCTIONS**
- 2 TROUBLESHOOTING**
- 3 Documents / Resources**
  - 3.1 Related Manuals / Resources**

## IMPORTANT SAFETY INSTRUCTIONS

When using an electrical appliance, basic precautions are required to always be followed, including the following:

### READ ALL INSTRUCTIONS BEFORE USING THIS APPLIANCE

**CAUTION** – For 9870L Vacuum Trimmer Only

When the hair chamber is removed, the vacuum fan is exposed. To reduce the risk of injury, do not place or insert any object, including fingers into the fan. Always have a vacuum chamber in place when using the trimmer.

### DANGER

To reduce the risk of electrical shock:

- Do not reach for an appliance that has fallen into the water. Unplug immediately from the receptacle.
- Do not use it while bathing or in a shower.
- Do not place or store an appliance where it is able to fall or be pulled into a tub or sink.
- Do not place in or drop into water or other liquid.
- Except when charging, always unplug this appliance from the electrical outlet immediately after using it.
- Unplug this appliance before cleaning.

### LITHIUM-ION BATTERY REPLACEMENT

For battery replacement, the entire, intact appliance should be sent to your nearest Wahl Customer Service center or taken to a suitably qualified professional. (The addresses can be found at the front of this booklet). The battery should only be replaced by the original manufacturer's spare, for safety reasons a substitute should not be used.

Do not attempt to remove the battery. Lithium-Ion batteries can explode, catch fire, and/or cause burns if disassembled, damaged, or exposed to water or high temperatures.

### WARNING

To reduce the risk of burns, fire, electrical shock, or injury to persons:

- This appliance can be used by children aged from 8 years and above and persons with reduced physical, sensory or mental capabilities or lack of experience and knowledge if they have been given supervision or instruction, by a person responsible for their safety, concerning the use of the appliance in a safe way and understand the hazards involved. Children should be supervised to ensure that they do not play with the appliance. Cleaning and user maintenance shall not be made by children without supervision.
- Keep the appliance dry. It is essential to prevent electrical equipment from coming in contact with water or other liquids.
- This appliance is to be used with the power supply unit provided with the appliance. If the power supply cord is damaged, it must be replaced by the manufacturer, its service agent, or similarly qualified persons in order to avoid a hazard.
- Do not crush, disassemble, heat above 100°C (212°F), or incinerate the appliance, due to the risk of fire, explosion, or burns.
- Use this appliance only for its intended use as described in this manual. Do not use attachments not specified by the manufacturer.
- Never operate this appliance when it has a damaged cord or plug when it is not working properly after it has been dropped or damaged, or after it has been dropped into water. Return the appliance to a service center for examination and repair.
- Never drop or insert any object into any opening.
- Do not use this appliance with a damaged or broken blade or attachment, as it has the potential to result in facial injury.
- During use, do not place or leave the appliance where it is expected to be subject to damage by animals, or exposed to the weather. **FOR PET CLIPPERS ONLY:** This appliance is intended for trimming purposes only.

## SAVE THESE INSTRUCTIONS

### THIS APPLIANCE IS INTENDED FOR HOUSEHOLD USE ONLY

#### RECHARGING

The appliance's transformer is designed to charge the battery without overcharging. Periodic recharging of the appliance, rather than continuous recharging, will prolong battery life. Run time may vary depending on the coarseness of hair or attachment head used.

1. This appliance is conveniently designed for household use. It should be allowed to charge 1 to 3 hours before first use.
2. Connect the transformer to the appliance. **BE SURE THE APPLIANCE IS IN THE "OFF – 0" POSITION**  
**WHEN CHARGING.**
3. Plug the recharging transformer into any convenient electrical outlet at the correct voltage.
4. When the appliance is low in power, it should be connected to the transformer and plugged into an outlet to assure maximum power is available when it is next used.
5. This appliance is to be used with the power supply unit provided with the appliance.

## TROUBLESHOOTING

If the appliance does not seem to take a charge, check the following before returning it for repair:

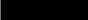
1. Check outlet voltage by plugging in another appliance.
2. Make sure the outlet simply is not connected to a light switch which turns the power at the outlet off when lights are turned off.
3. Be sure the appliance is properly connected to the recharging transformer, all connections are secure and the switch on the appliance is turned "OFF – 0."
4. If your electricity is connected to a master power switch, we suggest the appliance be disconnected from the charger anytime the master switch is off. Leaving the unit plugged into a dead outlet or an unplugged charger will drain the battery.
5. If the appliance does not run and it is completely charged, turn the unit "ON – I" and pinch or push the blades manually. (Oil may have dried out between the blades, so they may be temporarily stuck together.)  
Do not try to repair the unit yourself, instead please contact your dealer or an official WAHL service center.

## LITHIUM BATTERY DISPOSAL

Do not dispose of this product or the Lithium battery in the normal household waste.

The product should be returned to your nearest Wahl Customer Service center (the address can be found within this booklet) where we offer a take back service or taken to a local collection facility where they will be dealt with safely and sent for the appropriate recycling.



 This marking indicates that this product should not be disposed of with other household wastes throughout the EU. To prevent possible harm to the environment or human health from uncontrolled waste disposal, recycle it responsibly to promote the sustainable reuse of material resources. To return your used device, please use the return and collection systems or contact the retailer where the product was purchased. They can take this product for environmentally safe recycling.

## NOTES:

WAHL CLIPPER CORPORATION  
World Headquarters  
P.O. Box 578. Sterling, IL 61081

Wahl (UK) Limited  
Sterling House, Clipper Close  
Ramsgate, Kent CT12 5GG

Wahl Hungária Kft  
H-9200 Mosonmagyaróvár  
Barátság u.6.  
Hungary

Wahl International Consumer Group B.V.  
Engelenburgstraat 36  
7391 AM Twello,  
The Netherlands

Wahl Spain  
Fernando Giner de los Ríos 12  
46910 Sedaví  
Valencia, Spain

WAHL France SAS  
1c rue Foch  
67450 Mundolsheim  
France

WAHL Italias. r. l.  
Via Gobetti 52 – 1° piano  
4 0129 Bologna (BO)  
Italia

Представительство в РФ и РБ:  
ООО УОЛЛ Рус  
Ракетный бульвар, д. 16  
129164 Москва / Russia (Россия)

Wahl India Grooming Products Pvt Ltd.  
B-1002, 10TH Floor, B-Wing, Lotus Corporate Park, Off Jay  
Coach Flyover,  
Western Express Highway,  
Goregaon-East, Mumbai 400-063.

Wahl Japan  
K Building 8F  
1-32-11 Yoyogi,  
Shibuya-Ku, Tokyo 151-0053, Japan

Wahl Australia PTY LTD  
PO Box 456  
Acacia Ridge Qld 4110,  
Australia

Wahl NZ Limited  
PO Box 38 323  
Wellington Mail Centre  
Lower Hutt 5045, New Zealand

Wahl Clipper Brasil  
Rodovia Geraldo Scavone, 2300  
UC 45. Pedregulho.  
Jacareí – SP. CEP: 12305- 490

Wahl Argentina  
Av. Alvarez Jonte 5655  
Buenos Aires (C1407GPK), Argentina

WAHL MEA FZCO  
Dubai Airport Free Zone  
P.O Box 371395, Dubai UAE

Wahl Clipper (Pty) Ltd  
PO Box 2916 Bedfordview,  
Gauteng 2007 South Africa

© 2020

Wahl® is a registered trademark  
of Wahl Clipper Corporation  
Revised 1/20 V2

[www.wahl-consumer.com](http://www.wahl-consumer.com)

## Documents / Resources



[Wahl 1661.0465 Trend Cut Machine for Hair Cutting](#) [pdf] User Guide

1661.0465, Trend Cut Machine for Hair Cutting

## Related Manuals / Resources



### [OneForAll Ultra Flat Indoor TV Antenna SV9440 Instruction Manual](#)

QUICK INSTALLATION GUIDE SV9440 GUARANTEE TERMS AND CONDITIONS / SAFETY universal ELECTRONICS warrants to the original purchaser that...



### [beko Refrigerator User Manual](#)

Refrigerator Refrigerator Instruction of use Lednicka Pokyny pro používání Chladnicka Návod na použitie Chlodziarka Instrukcja obsługi Kűlmik Kasutusjuhend...

### [Schwaiger WLED90 513 Instruction Manual](#)

WLED90 513 BEDIENUNGSANLEITUNG Herzlichen Glückwunsch und vielen Dank für den Kauf dieses Schwaiger Produktes. Diese Bedienungsanleitung soll Ihnen...



## [HIKVISION DS-2DE4225IW-DE Network PTZ Camera User Guide](#)

[DS-2DE4225IW-DE Network PTZ Camera](#) [Network PTZ Camera Quick Start Guide](#) [Installation Video](#) [Table of Contents](#) [English](#) [7](#) [Polski](#)...

### [Manuals+](#)

- [home](#)
- [privacy](#)