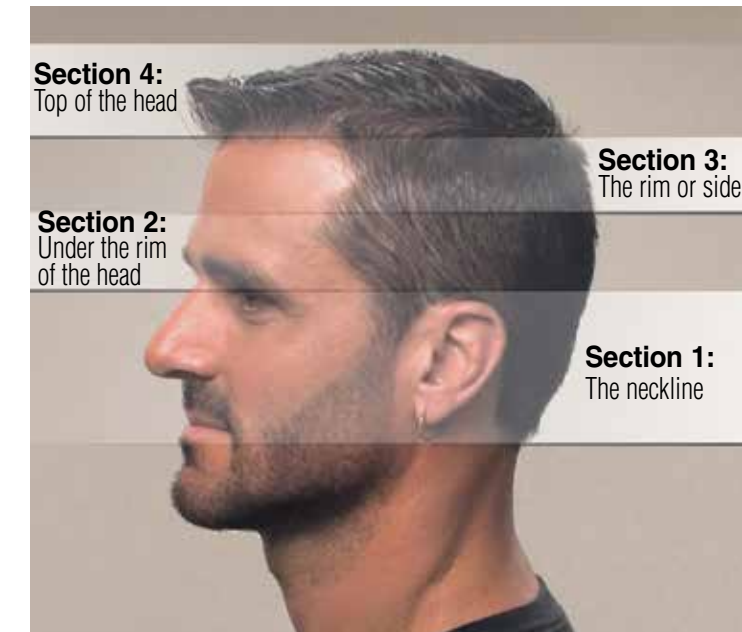


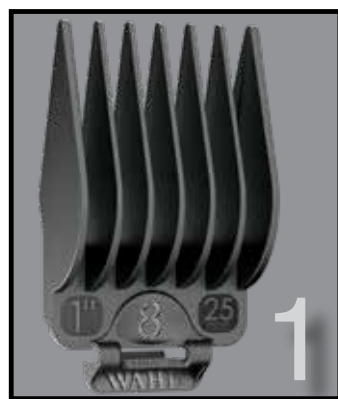
TIPS & TECHNIQUES

When you cut your hair, you should visualize the head as if it were divided into four sections. Image below shows the different sections. Using proper techniques when moving from one section to the next will help you blend the sections together for professional looking results.



- The first time you cut hair, cut only a small amount of hair until you become accustomed to the length of hair each attachment guard provides.
- For best results, hair should be dry before using clipper.
- For best results, when cutting hair, go through hair at a slow, even speed. Don't force the clipper through the hair.
- For best results, go through the hair against the direction of your hair's growth, so you can catch more hair with the guard.
- The blades on your new clipper should be oiled every few haircuts.

STEP-BY-STEP GUIDE FOR CUTTING HAIR



1. Comb hair and remove tangles. Add the largest attachment guard to the clipper.



2. Start at hairline on side of head and cut up to middle of head. **Note: If cut hair is too long, repeat with next smaller guard.**



3. Continue around head repeating **step 2**.



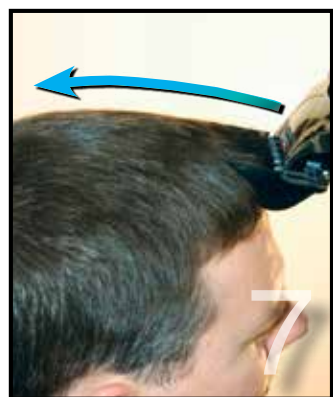
4. You are now ready to cut the middle portion of the hair.



5. Use the attachment guard with the next highest number than in **step 3**. Example: If you used a #6 guard in **step 3**, select guard #7.



6. Continue cutting around middle portion of head as in **steps 2 and 3**.



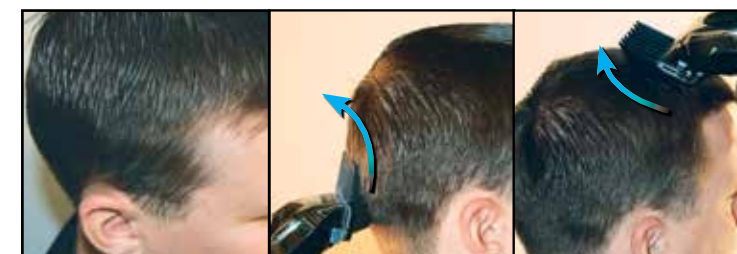
7. For cutting top of head, use the attachment guard with the next highest number than in **step 6**. Start at front bang area.



8. Cut across top of head. Comb hair on entire head to assess if further cutting is necessary.

BLENDING

When you want to blend from one section to the next, you will need to practice moving the clipper in an upward rocking motion. This motion will leave the hair slightly longer where the clipper pulls away from the scalp, enabling you to blend between the sections and achieve a smooth transition from one length of hair to the next. This technique will enhance the appearance of your haircuts.



1. Blend out any cut lines. Lines may form where you change guard sizes. Use the same guard used in **step 3**
2. Using a rocking motion, blend out the middle cut line.
3. Using the guard used in **step 8** repeat blending the top outline as needed.

DETAILING / OUTLINING



1. No attachments needed. Start with the sideburns.
2. Continue around ear as shown.
3. Trim neckline as shown.

Use clipper or battery trimmer (not all kits include a trimmer).

WARRANTY

5-YEAR LIMITED WARRANTY

Valid in U.S.A. Only. If your Wahl product fails to operate satisfactorily within five (5) years from the date of original purchase or receipt as a gift, Wahl will, at our option, repair or replace the product and return it to you FREE OF CHARGE.

ELITE PRO / PRO SERIES / LIFEPROOF PRO CLIPPERS ONLY LIMITED LIFETIME WARRANTY (EXCLUDES BLADES)

Valid in U.S.A. Only. If your Wahl product fails to operate satisfactorily, Wahl will, at our option, repair or replace the product and return it to you FREE OF CHARGE.

HOW TO GET WARRANTY SERVICE

Do not return this product to store where purchased. Products needing repair under this warranty should be returned with postage prepaid to:

Wahl Clipper Corp.
Attn: Repair Department
3001 Locust Street
Sterling, Illinois 61081

Or, call 1-800-767-9245 for assistance.

When mailing, please include a note describing the defect and the date of original purchase or receipt as a gift. Product out of warranty will be repaired at our standard repair charges.

WHAT THIS WARRANTY DOES NOT COVER

This warranty does not cover products damaged by: (1) Modification or repair by anyone other than Wahl Clipper Corporation or a Wahl authorized service center; (2) Commercial (non-consumer) use or unreasonable use.

This warranty gives you specific legal rights, and you may also have other rights which vary from state to state. No other written express warranty is given. No responsibility is assumed for incidental or consequential damages of any type or for the use of unauthorized attachments. Some states may not allow the exclusion or limitation of incidental or consequential damages, so the limitation may not apply to you. Warranty valid in U.S.A. only. Outside U.S.A., check with store for Wahl authorized distributor's warranty.



Home Haircutting



Artwork #91585-1101 v.2021.02
© 2021 WAHL CLIPPER CORPORATION
P.O. Box 578, Sterling, Illinois 61081 USA
The Brand Used By Professionals

CLIPPER MAINTENANCE

OIL BLADES:
The blades on your new clipper should be oiled every few haircuts. When oiling your clipper, turn the clipper "ON - I," hold the unit with the blades facing DOWN and squeeze three drops across the front of the blade and one drop on each side on the heel of the blade. Wipe off excess oil with soft cloth.
NOTICE—DO NOT OVER OIL!
Excessive oiling or application of liquids will cause damage if allowed to seep back into motor.
DO NOT USE HAIR OIL, GREASE, OR ANY OIL MIXED WITH KEROSENE OR ANY SOLVENT.



DETACHABLE BLADES: 79610 Clippers Only
REMOVING BLADES: 79610 Clippers Only
Before removing blades, make sure the on/off switch is turned to the "0" or "OFF" position.
• Hold the clipper in both hands. Using both thumbs, push the blades away from the front of the clipper.
• The blade set with the top and bottom blades will come off in one piece.

ATTACHING BLADES: 79610 Clippers Only
Before reattaching blades, make sure the on/off switch is turned to the "0" or "OFF" position.
• Place the blade at an angle (with the bottom portion of blade fitting into the clipper) so the outer white clips of the blade set sit just below the metal clips inside the clipper. Make sure blade is center aligned with clipper.
• While holding the bottom of the blade, push the blade onto the clipper with your thumb until blade "snaps" into place. Don't use excessive force to push blade into place.

CLEANING BLADES:
Use the cleaning brush(es) provided to remove hair from between the blades. **DO NOT USE WATER TO CLEAN THE BLADES.** For best results, after brushing the blades, add Wahl clipper oil to the blades.

TAPER LEVER:
MC, MC2, CNT2-M, MC3, PVC, 79050 Clippers Only
The taper lever adds versatility to your clipper by allowing you to gradually change the closeness of your cut, ideal for blending and fading. Lever in "Up" Position = Closest Cut; Lever in "Down" Position = Longest Cut. Should the blades become jammed with hair, move the taper lever up and down several times to help free up the blades.

CORD / PLUG:
The cord should not be used to pull the clipper. Since freedom of movement needs to be maintained, care should be used to keep the cord untwisted and unobstructed. **YOUR CLIPPER HAS A POLARIZED PLUG:** To reduce the risk of electric shock, this appliance has a polarized plug (one plug blade is wider than the other). This plug fits in a polarized outlet only one way. In the event the plug doesn't fit fully in the outlet, reverse the plug. **DO NOT CHANGE THE PLUG IN ANY WAY.**

IF YOUR CLIPPER IS TOO NOISY:
MC, SC, SC2, MC2, CNT2-M, MC3 Clippers Only
(A) Oil blades as directed in previous portion of instruction booklet
(B) You can reduce the "clatter sound" by adjusting the power screw. The power screw was adjusted for peak efficiency before leaving the factory. However, if voltage in your home is too high or low, the clipper power screw may need adjustment.

ADJUSTING POWER SCREW TO REDUCE CLIPPER NOISE (excessive clattering):
1) Turn your clipper "ON"
2) Use the end of your detail cleaning brush or a screwdriver to turn power screw in a COUNTER CLOCKWISE direction until clatter goes away.
MAXIMUM POWER SETTING:
MC, SC, SC2, MC2, CNT2-M, MC3 Clippers Only
ADJUSTING POWER SCREW FOR MAXIMUM POWER SETTING:
1) Turn your clipper "ON"
2) Use the end of your detail cleaning brush or a screwdriver to turn power screw in a CLOCKWISE direction until you start to hear a clattering noise.
3) Then turn the power screw in the opposite (counterclockwise) direction at least ¼ turn (clattering sound should have stopped).

BUILT-IN TRIMMER

CONVERT TO A TRIMMER:
CNT2-M Clipper Only
• Open your detail trimmer by unsnapping the detail trimmer lid (Fig 1).
• Guide the detail trimmer lid over the clipper blade (like adding an attachment guard). The clipper blade must be positioned between the trimmer lid and detail trimmer guide fingers (Fig 2).
• Press down on the top center of detail trimmer lid to snap onto the clipper blade (Fig 3). Do not push on the detail trimmer blade.



CONVERT BACK TO A CLIPPER:
• Unsnap the detail trimmer lid from the clipper blade by lifting the back of the trimmer lid (like removing an attachment guard) Fig (4). Lift the detail trimmer lid around the detail clipper blade.
• Close your detail trimmer by tucking the detail trimmer blade down starting on top side (Fig 5).
• Snap into place by pressing down on the top center of detail trimmer lid (Fig 6).



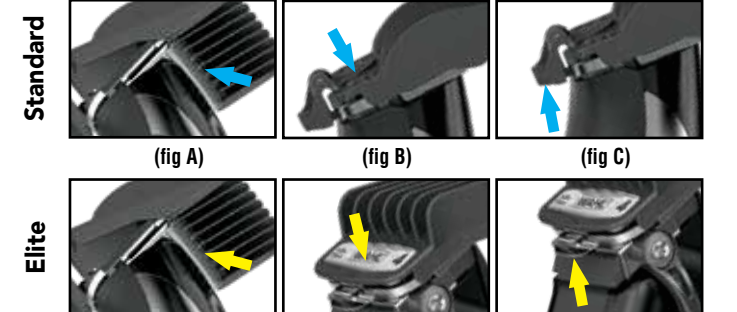
• When exposed to excessive force such as dropping, the detail trimmer is designed to pop off rather than break. To re-attach your detail trimmer, simply snap the detail trimmer arm back into place (Fig 7).

EASY-TO-USE ATTACHMENT GUARDS

ATTACHMENT GUARDS:
Attachment guards help you cut hair to a desired length by keeping the blades at a set distance from the skin, helping ensure an even hair length after cutting hair with a guard attached to the clipper. For easy reference, each guard is numbered and lists what length the hair will be after being cut using the noted size guard. Always start with a longer length guard (you can always use a shorter length guard if the length is not short enough). The first time you cut hair, cut only a small amount of hair until you become accustomed to the length of hair each attachment guard provides. To achieve an even "tapered" cut around the ears, use the LEFT and RIGHT tapered attachment guards. To trim eyebrow hair, use the BROW trim attachment guard. Before adding or removing guards from clipper, make sure the on/off switch is turned off (or in "0" position). Not all kits include all the different size and style of guards listed in this instruction sheet.



ADDING:
While holding at a slight angle, place the attachment guard onto the clipper so the tips of the blade rests into the slots of the guard fingers. (fig A)
Using your thumb, push down on the guard, where the guard size number is located, until you hear a "SNAP". (fig B)



SPECIALTY ATTACHMENT GUARDS: Not all kits include the guards shown below



The cutting length of the ear taper guards range from 3/16" (#1-1/2") to 1/4" (#4).

EAR TAPER GUARDS:
Attach the "R" RIGHT attachment guard to the clipper as directed.
Starting BEHIND the right ear (so shorter portion of guard fingers are closest to the ear), move the clipper upward and around towards the front side of the ear repeating as necessary. (Fig A)
Keep the "R" attachment guard on clipper. Starting on the FRONT of the left ear (so shorter portion of guard fingers are closest to the ear), move the clipper upward and around towards the back side of the ear repeating as necessary. (Fig B)



BROW TRIM GUARDS:
Attach the BROW attachment guard to the clipper as directed above.
For longer cut length, start from just above your nose and slowly guide the clipper to the outside of your face.
For shorter cut length, start from outside of face and slowly guide clipper to the inside of your face.

EAR TRIM GUARDS:
1. Attach ear trim guard to clipper.
2. Hold the clipper at a 45-degree angle.
3. Use your finger to tilt ear forward away from hairline.
4. Slowly trim along the hair line from back to front.
Avoid poking eyes.

CUSTOMER SUPPORT

wahlUSA.com
help@wahlclipper.com 1.800.767.9245
Find us on social media: @WAHLGROOMING

