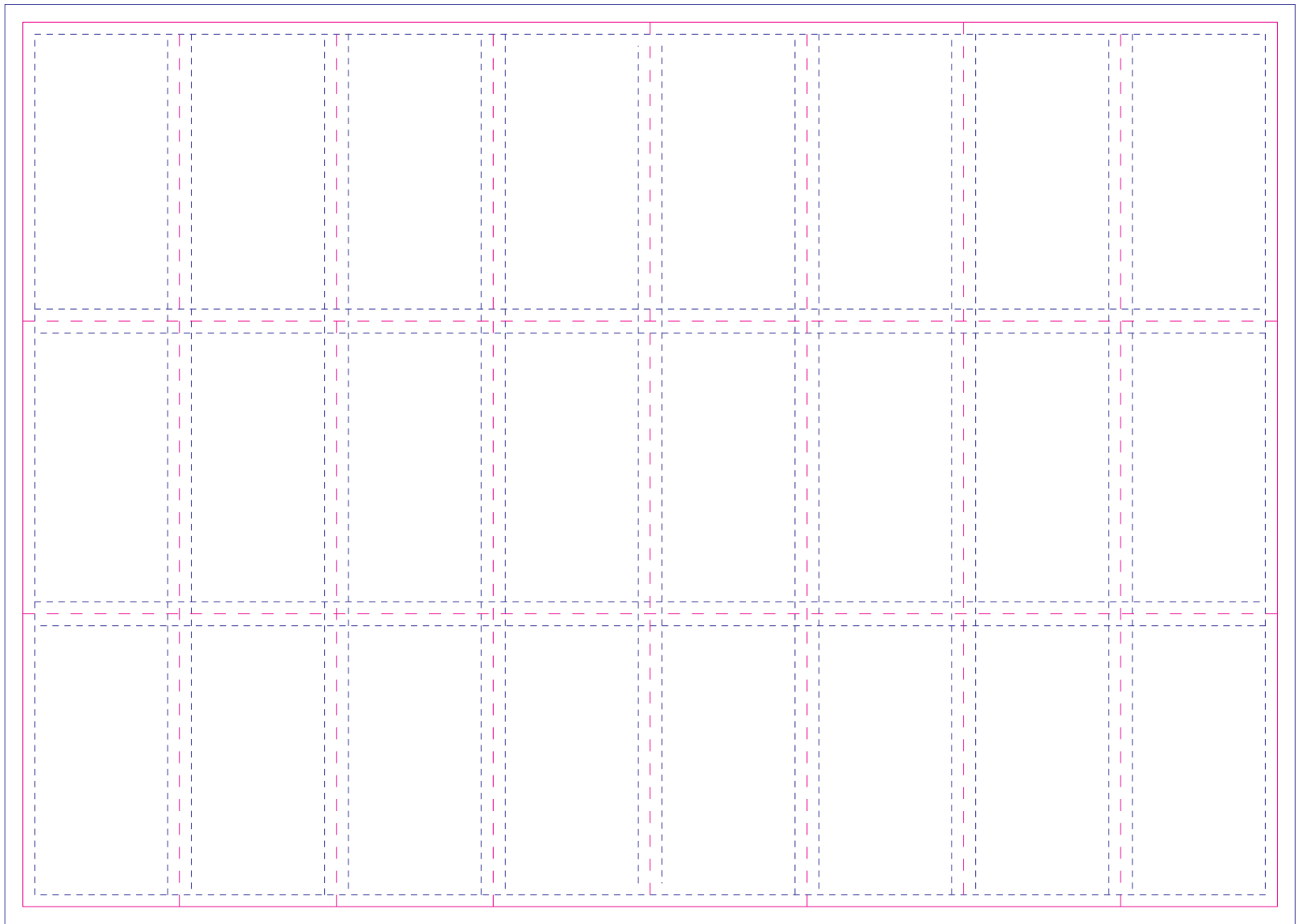


26.25mm



CUSTOMER INFO:
Minimum Point Size = 8.00pt




RB Artwork and Print Specification

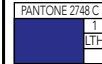
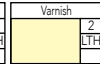
| | |
|-----------------------|------------------------------|
| Trident Reference No: | RB482894 |
| ZEN Ref: | TR2245748 |
| Action: | D |
| Brand: | Scholl - Mass |
| Category: | Skin World |
| Segment Group: | Dry, Rough Skin |
| Segment: | Hard Skin File Single Refill |
| Pack Size: | 2in1Pack |
| Market/Country: | UK |
| Date: | 12/08/21 |

RBH Contact: Jola Maczkiewicz

| | |
|---|----------------|
| Artwork Type: BW Commercial | |
| Component Code (2D if applicable): | 3209569 |
| 2nd Component Code (if applicable): | N/A |
| Parent Technical Packaging Specification: | D8311817 |
| Finished Goods Code: | 3208881 |
| Supply Point: | Zobebe |
| 3rd Party Code: | N/A |
| Pharmacode No/NE: | N/A |
| Edgemark Position: | N/A |

| | |
|--------------|---------------------------|
| CAD Cam Ref: | Sch-LR-D8311817-210x148mm |
| Printer: | Generic RB |
| Substrate: | Paper |

| | |
|--|--|
| Technical & Non Printing Items | |
|  Cutter |  Cutter 2 (if applicable) |
|  Guides |  Guides 2 (if applicable) |

| | |
|---|---|
| Colours (Leaflet) | |
|  |  |

BARCODE INFO

| | |
|----------------------------|-----|
| Barcode Type: | N/A |
| Barcode Number: | N/A |
| Magnification: | N/A |
| Truncated By: | N/A |
| Full Height: | N/A |
| Bar Height (Smallest Bar): | N/A |
| BWR: | N/A |
| Encoded Data: | N/A |



Please note that any low resolution paper Canon colour copies associated with this job should be referred to for content, layout and colour separation only.

UNDER NO CIRCUMSTANCES SHOULD THIS ARTWORK BE ALTERED WITHOUT PRIOR PERMISSION FROM TRIDENT.

STUDIO USE ONLY Jerald Wilson Clementraj **v2.0**
Sm•Art check results: G=2; O=0; R=0; - JW - 12/08/21 18:26:15

| | | |
|---|--------------------|---------------------------------|
| Production line | | |
| Manufacturing site | | |
| Pack Tech approver | 1 st | 2 nd |
| Date | | |
| Check Criteria | Details & Comments | Checks |
| Approvals | | 1 st 2 nd |
| Market Approval | | |
| Regulatory Approval | | |
| 3rd Party Approval | | |
| Technical Drawing/ Cutter ref no. & PPI component code | | |
| PPI component code number/s correct on artwork? | | |
| PPI component code number/s in correct position on artwork? | | |
| Correct drawing for the production line? | | |
| Profile shape & dimensions | | |
| Graphics layout/orientation | | |
| Unwind diagram (PPTD1022/1-20) | | |
| Printable areas/bleed | | |
| Varnish free areas | | |
| Variable coding position & dimensions | | |
| Varnish and print requirements | | |
| Pre-printed headers (alignment and suitability) | | |
| Embossing, Braille & Foil Blocking | | |
| Separations on artwork | | |
| Alignment within cutter | | |
| Braille structure | | |
| Verification Code Type; Pharma Code / 2D / OCV | | |
| Bar sequence and/or number correct on artwork | | |
| Bar sequence and/or number in correct position on artwork? | | |
| Size (height, width, spacing, font) | | |
| Direction of read | | |
| Light margins and print free areas | | |
| Colour | | |
| Repeat distance (reeled material) | | |
| Cross check related docs ie BOM | | |
| Bar code Type; EAN, ITF, Code39, etc | | |
| Magnification / width and height | | |
| Colour (e.g. black print on white background) | | |
| Light margins & indicators | | |
| Bearer bars & H gauges (if required) | | |
| Symbol grade (Pass = A,B,C; Action = D,F) | | |
| Bar code number (human readable) | | |
| Bar code number (encoded & hidden data) | | |
| Confirm bar code number from source | | |
| Cross check related docs (JDE/PID) | | |
| Photo-electric cell mark / edge marks | | |
| Present & per Tech drawing? | | |
| Correct pitch? | | |
| Additional markings | | |
| e-mark, recycle logo etc | | |
| Legend box (RB specification) | | |
| Correct component code | | |
| Correct D spec / has cutter changed? | | |
| Correct printer / has printer changed? | | |
| Correct Substrate | | |
| A/W is set up appropriately for this substrate | | |
| Edge mark details | | |
| Pharmacode details | | |
| Colours & print process | | |
| Varnish | | |
| Barcode information | | |
| General details are correct | | |
| Pass / Fail comments and Signature | | |
| By approving the artwork referenced within this form I authorise it for release to the print supplier | | |
| Additional Comments | | |

RB Artwork and Print Specification

Trident Reference No: RB482894

ZEN Ref: **TR2245748**

Action: **D**

Brand: Scholl - Mass

Category: Skin World

Segment Group: Dry, Rough Skin

Segment: Hard Skin File Single Refill

Pack Size: 2in1Pack

Market/Country: UK

Date: 12/08/21

RBH Contact: Jola Maczkiewicz

Artwork Type: BW Commercial

Component Code 2D if applicable: **3209569**

2nd Component Code if applicable: **N/A**

Parent Technical Packaging Specification: D8311817

Finished Goods Code: **3208881**

Supply Point: Zobebe

3rd Party Code: N/A

Pharmacode No/NE: N/A

Edgemark Position: N/A

CAD Cam Ref: Sch-LR-D8311817-210x148mm

Printer: Generic RB

Substrate: Paper

Technical & Non Printing Items

Cutter

Guides

Cutter 2 (if applicable)

Guides 2 (if applicable)

Colours (Leaflet)

PANTONE 2748 C

1

LT14

Varnish

2

LT14

Barcode Type: N/A

Barcode Number: N/A

Magnification: N/A

Truncated By: N/A

Full Height: N/A

Bar Height (Smallest Bar): N/A

BWR: N/A

Encoded Data: N/A

rb

HEALTH • HYGIENE • HOME

TRIDENT

Connaught House, Connaught Road,
Kingswood Business Park, Hull, HU7 3AP, England.
T: +44 (0) 1482 826100

Please note that any low resolution paper Canon colour copies associated with this job should be referred to for content, layout and colour separation only.

UNDER NO CIRCUMSTANCES SHOULD THIS ARTWORK BE ALTERED WITHOUT PRIOR PERMISSION FROM TRIDENT.

STUDIO USE ONLY

Jerald Wilson Clementraj

v2.0

Sm•Art check results: G=2; O=0; R=0; - JW - 12/08/21 18:26:15