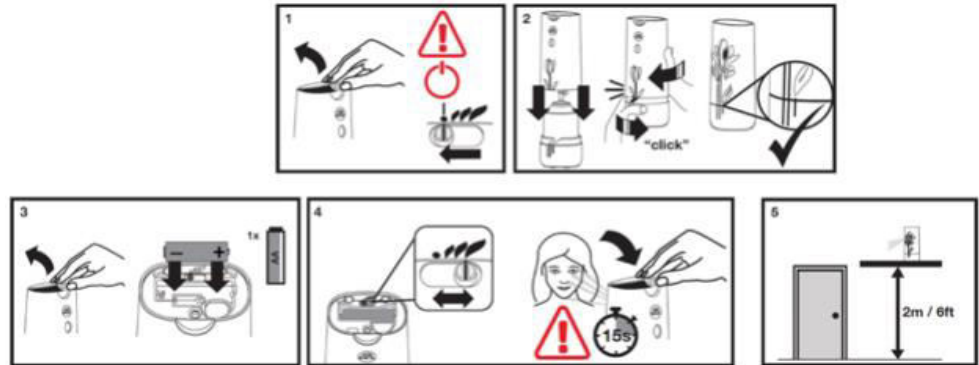


# Freshmatic

## Picto manual



"Disposal: according to local regulations. Remove battery. Dispose of the empty aerosol can or recycle. Dispose of automatic device in the appropriate recycling bin.

## Instructions

Before inserting this aerosol refill check that your automatic device switch is in the OFF position. Direct the device away from the face before switching on. When it is switched on, the device will automatically spray after 15 seconds. For safety reasons, follow carefully the directions for use supplied with your Freshmatic device.

CAUTION: Use only as directed.

Intentional misuse by deliberately concentrating and inhaling contents can be harmful or fatal.

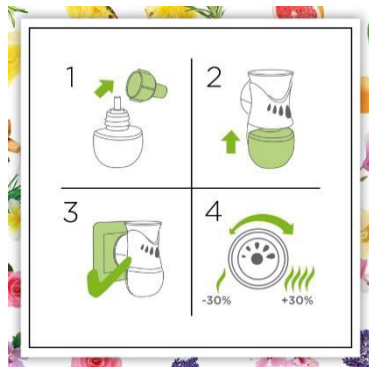
Do not breathe aerosol.

Use in well ventilated areas.

Extremes of temperature can occur in motor cars and near ovens and fireplaces.

Slippery on hard surfaces."

## Liquid Electrical Complete

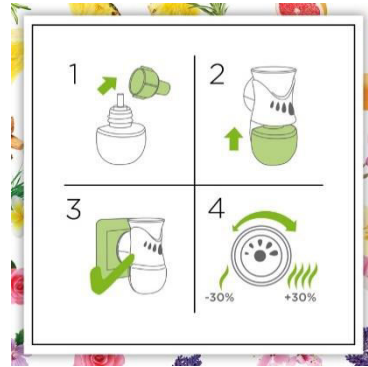


### "Usage instructions:

Use only with Airwick or Botanica by Airwick electric diffuser

1. Remove the plastic cap from the fragrance bottle.
2. Firmly insert fragrance bottle into the underside of the plug diffuser unit, until a 'click' can be heard. Ensure the fragrance bottle is kept vertical at all times.
3. Plug the assembled unit into an available socket.
4. To increase or decrease the fragrance intensity, rotate the dial on the top of the diffuser. Largest mark = max setting
5. To replace the fragrance bottle, remove the device from the outlet and pull the bottle downwards "

## Liquid Electrical Refills

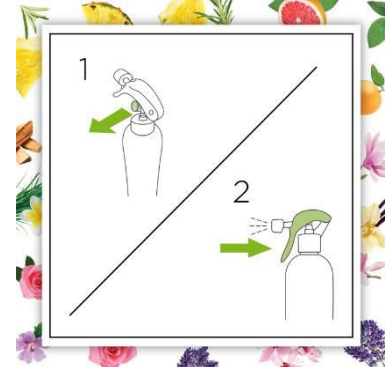


### "Usage instructions:

Use only with Airwick or Botanica by Airwick electric diffuser

1. Remove the plastic cap from the fragrance bottle.
2. Firmly insert fragrance bottle into the underside of the plug diffuser unit, until a 'click' can be heard. Ensure the fragrance bottle is kept vertical at all times.
3. Plug the assembled unit into an available socket.
4. To increase or decrease the fragrance intensity, rotate the dial on the top of the diffuser. Largest mark = max setting
5. To replace the fragrance bottle, remove the device from the outlet and pull the bottle downwards "

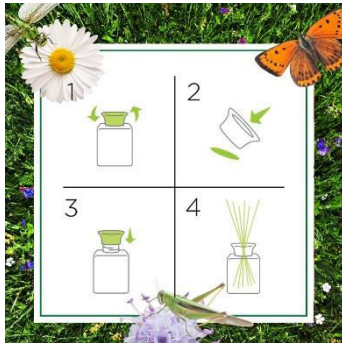
## Room Spray



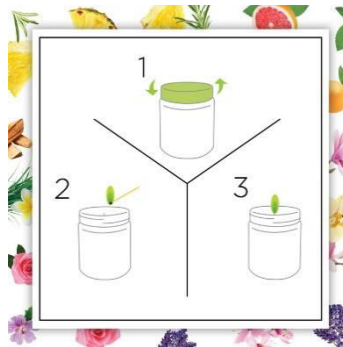
### "Usage Direction

1. Remove safety stopper to release the trigger and dispose of stopper.
2. Direct away from face and pull trigger at least three times to start product flow.
3. Keep pack upright and pull trigger firmly each time you spray.
4. Store in a cool place away from direct sunlight."

## Sticks



## Candle



KEEP FREE FROM FOREIGN OBJECTS (e.g. MATCHES). Do not add essential oils. Keep wick trimmed to 1 cm to avoid excessive smoking. Never leave a burning candle unattended, near flammable material or for more than 4 hours. Stop when less than 1 cm of product remains and never allow the candle to burn all the way down.