

**Safety Instructions:**

To ensure proper operation of this appliance, please read this instruction manual carefully before using the appliance, and keep it for further reference.

**⚠ WARNING**

- Do not use this appliance under the following conditions: persons with allergies; persons with facial paralysis or nerve disorders; if you have any facial fracture or if you had plastic surgery on the face with the implantation of silicone, metal or plastic; on areas with open wounds, chapped or swollen skin; if you have severe skin diseases and other skin conditions.
- Verify the appliance before you start using it. Discontinue use if you detect any damage.
- Before you start using this appliance, remove earrings, necklaces, or other accessories to avoid injuries if hair gets tangled in the appliance.
- If you feel any discomfort while using the appliance, immediately discontinue use and consult a doctor.
- Do not attempt to modify, disassemble, or repair the appliance by yourself to avoid accidents.

**⚠ DANGER**

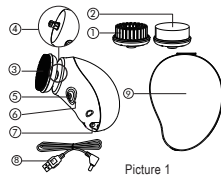
- Do not share the same brush with others.
- Keep the appliance out of reach of children.
- Regularly clean the appliance and the accessories to extend its lifetime.
- This appliance has a lithium battery. Do not place or store the appliance for long periods under a hot or humid environment. If you do not intend to use the appliance for a long time, store it after the battery is full.

**Product Specifications:**

- Name: Portable Facial Cleanser Set
- Model No.: TB-1387A
- Input: 5V/0.5A
- Power: 2.4V/600mW
- Type of Battery: Li-polymer 3.7V 800mAh
- Executive Standard: Q/XM1001-2020

**Product Description:**

- Cleaning & Clearing Brush
- Skin Refreshing Brush
- Silicone Cleansing Brush
- Connection Pin
- Power/Direction Switch Button
- Battery Indicator
- Charging Port
- USB Cable
- Storage Case



Picture 1

**Operating Instructions:**

**1. Preparation Before Use**

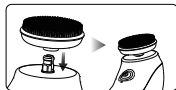
Charging the appliance takes approximately 3 hours, and it can be used continuously for up to 3 hours.

- Make sure the appliance is turned off before you start charging it. Connect the USB Cable to the appliance and to a computer or USB plug adapter to charge it (adapter is not included).
- The Battery Indicator lights up red when the appliance is charging, and when the battery is full, the Battery Indicator lights up blue.
- Close the Charging Port before you start using the appliance to prevent water from entering the port.

**2. Brush Head Replacement**

- To Install

Align the Brush Head with the Brush Connection Pin and firmly press the Brush Head until it locks the position with a click (picture 2).



Picture 2

- To Remove

To remove the Brush Head, hold the appliance and gently pull the Brush Head (picture 3).



Picture 3

**3. Using the Appliance**

- The appliance comes with 3 different Brush Heads to fit different skin needs.

- Cleaning & Clearing Brush Head:**  
This brush with soft fiber bristles effectively removes excess sebum, blackheads, and dead skin cells. Suitable for oily, combination, and normal skin.
- Silicone Cleansing Brush Head**  
This Brush Head is made of food-grade silicone, is soft on the skin, gently massages the face, and improves skin health. Suitable for normal and dry skin.
- Skin Refreshing Brush Head**  
This Brush Head made of latex sponge is soft and smooth. Suitable for dry and sensitive skin.

- Select and install the Brush Head you want to use according to your skin needs:

- Moisten the face with water.
- Apply cleansing gel/cream to the palm of one hand, with the other hand hold the appliance and rub the Brush Head on the cleansing gel/cream to form a foam.
- Apply foam to the face. Short press the Power Button to turn on the appliance, the Brush Head rotates clockwise, suitable to cleanse the right side of the face. Place the Brush Head on your skin and gently move it in a circular motion from the inside outwards. Press the Power Button again to change to counterclockwise rotation, suitable to cleanse the left side of the face (picture 4).

Recommended cleaning area, time, and order of use: T-zone (forehead, nose sides) 20 seconds → left and right cheeks 15 seconds each (30 seconds in total) → chin area 10 seconds → neck 30 seconds (picture 5).

- After using the appliance, turn it off, rinse your face with water and apply moisturizing lotion.



Picture 4



Picture 5

**Cleaning & Maintenance:**

- Make sure the appliance is turned off before you start cleaning.
- The surface of the appliance can be washed with water (the appliance should not be immersed in water), remove the excess water with a dry cloth and place it in a ventilated place to dry (do not dry it in direct sunlight).
- Never use any lubricant, detergent, polishing agents or air freshener on this appliance.
- When cleaning the Brush Heads, do not immerse it in hot water above 40°C and do not use corrosive liquids to clean it to avoid deformation.
- It is recommended to replace Brush Heads every 3 months. The brush heads are only suitable for TOUCHBeauty facial cleansing devices.

**Storage:**

This device has a lithium battery. Do not place or store the device for long periods under a hot or humid environment. If you do not intend to use the device for a long time, store it after it is fully charged.

**Recycling:**

The built-in battery contains substances that may pollute the environment. When disposing of this device, do not put it in the general household waste. Please dispose of this device in an official recycling point to contribute to environmental protection.

**Warranty & Support:**

**1. Troubleshooting**

Problem	Possible Cause	Solution
The appliance does not work.	Battery is running low or is out of power.	Charge the appliance as guided.
The Battery Indicator does not light up.	The USB Cable is not inserted correctly.	Insert the USB cable correctly in the appliance as guided in the Instruction Manual.
Abnormal noise when using the appliance.	Brush Head is installed incorrectly.	Turn off the appliance and install the Brush Head correctly as guided.
Other problems.		Contact your local dealer.

Note: If the appliance still does not work properly after using the above solutions, please stop using the appliance and contact your local dealer.

**2. After-Sales Service**

Please visit our website [www.touchbeauty.com](http://www.touchbeauty.com) or contact our customer service team [customer@touchbeauty.com](mailto:customer@touchbeauty.com) if you need to learn about our products or if you need any information. You can also contact an affiliate dealer in your country.

MANUFACTURER: TOUCHBEAUTY BEAUTY & HEALTH (SHENZHEN) CO., LTD

ADDRESS: 601 & 602, Block F5, TCL International E-City, 1001 Zhongshanyuan Road, Shuguang Community, Xili Subdistrict, Nanshan District, Shenzhen, China.