

ELECTRIC FACIAL CLEANSER SET

TB-0759A

INSTRUCTION MANUAL

Safety Instructions:

To ensure proper operation of this appliance, please read this instruction manual carefully before using the appliance and keep it for further reference.

⚠ WARNING

- Do not use this appliance under the following conditions: pregnant women or while breastfeeding; persons with allergies; persons with facial paralysis or facial nerve disorders; if you had any facial fracture or plastic surgery on the face with the implantation of silicone, metal or plastic; on areas with open wounds, severe dry skin and lumps; if you have severe skin diseases or other skin conditions.
- If you are allergic to latex, please do not use the skin refreshing brush.
- Verify the appliance before you start using it. Do not use this appliance if it has or appears to have any damage.
- Before you start using this appliance tie your hair, remove earrings, necklaces, or other accessories to prevent hair and jewelry from get tangled in the appliance.
- If you feel any discomfort on your skin while using the appliance, immediately stop using it and consult a doctor.
- Do not attempt to modify, disassemble, or repair the appliance by yourself to avoid accidents.

⚠ CAUTION

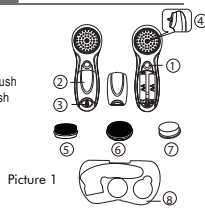
- Do not share the same brush with others.
- Keep the appliance out of reach of children.
- Do not immerse the appliance in water. Regularly clean the appliance and the accessories to extend its lifetime.
- This appliance is battery-operated, if you do not intend to use the appliance for a long time, remove the batteries.

Product Specifications:

- Name: Electric Facial Cleanser Set
- Model No.: TB-0759A
- Power: 3V /1.1W
- Type of Battery: AA x 2 (Not Included)
- Executive Standard: Q/MMMJ1001-2015

Product Description:

- ① Power Button
- ② Battery Cover
- ③ Battery Lock
- ④ Connection Shaft
- ⑤ Cleaning & Clearing Brush
- ⑥ Silicone Cleansing Brush
- ⑦ Skin Refreshing Brush
- ⑧ Storage Case



Brush Heads:

- Cleaning and Clearing Brush
Brush with 0.055mm soft bristles made of PBT, thinner and more flexible bristles, effectively cleans deep down into the pores without damaging the skin.
- Silicone Cleansing Brush
Brush is made of soft silicone, is gentle on the skin, massages the skin increasing blood circulation.
- Skin Refreshing Brush
Latex brush closely fits the skin, removes blackheads and in combination with exfoliation products exfoliates, removes dry patches and brightens the skin.

Using the Appliance:

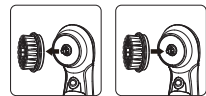
- Install the Batteries
With the appliance turned off, rotate the Battery Lock and remove the Battery Cover. Install 2 AA batteries according to the battery compartment instructions (picture 2) and put the Battery Cover back on (batteries are not included).



Picture 2

● Brush Head Replacement

1. Align the Brush Head with the Connection Shaft, and firmly press the Brush Head until it locks the position with a click. Hold and pull out the Brush Head to remove it (picture 3).



Picture 3

2. Damaged Brush Head or worn out bristles may irritate the skin, it is recommended to replace the Brush Head every 3 months.

● How to Use

- ※ Do not use the appliance on the sensitive skin around the eyes.
1. Install the Brush Head you want to use as guided.
 2. Wet the face with water, apply cleansing gel/cream to the palm of one hand, with the other hand hold the appliance and rub the Brush Head on the cleansing gel/cream to form a foam. Apply the foam to the face.
 3. Short press the Power Button to turn on the appliance and the low speed gentle cleansing mode, press the Power Button again to change to high speed deep cleansing mode. After you choose the appropriate mode, wet the Brush Head with water, place it on your skin and gently move it in a circular motion from the inside to the sides of the face. Recommended cleaning area, order and using time: forehead 20s → left and right cheeks 20-30s → T-zone 20s → neck 30s (picture 4).



Picture 4

4. Do not use the appliance when the Brush Head is dry as it may irritate the skin.
5. After using the appliance, turn it off, rinse your face with water and apply moisturizing lotion.
6. Clean the appliance body and Brush Head.

Cleaning & Maintenance:

- Make sure the appliance is turned off before you start cleaning it.
- Do not immerse the appliance in water. Brush Heads can be cleaned separately.
- Wash the surface of the appliance with water (the appliance should not be immersed) and dry it with a dry cloth.
- Never use hot water above 40°C or corrosive liquids to clean Brush Heads.
- After washing the Brush Head, place it in a ventilated place to dry (do not dry it in a place with direct sunlight).
- Do not use any lubricant, detergent, polishing agents or air freshener on this appliance.
- It is recommended to replace the Brush Head every 3 months.

Service:

- Eco-Friendly Tips
Batteries contain substances harmful to our environment. Do not dispose of the appliance with the batteries inside, remove the batteries and hand them over to an official recycling point. Do not dispose of the appliance and the batteries in the normal household waste, recycle them for environmental protection.

● Troubleshooting

Problem	Possible Cause	Solution
Appliance does not work.	Batteries are running low or out of power. Batteries were installed incorrectly.	Replace the batteries as guided. Reinstall the batteries correctly as guided.
Abnormal noise when using the appliance.	Brush Head was installed incorrectly.	Turn off the appliance and install the Brush Head correctly as guided.
Other problems.		Contact your local retailer.
Note: If the appliance still does not work properly after using the above solutions, please stop using the appliance and contact your local retailer.		

● After-Sales Service

If you need to learn about our products or if you need any information, please visit our website www.touchbeauty.com or contact our customer service team at customer@touchbeauty.com.

MANUFACTURER: TOUCHBEAUTY BEAUTY & HEALTH (SHENZHEN) CO., LTD
ADDRESS: 601 & 602, Block F5, TCL International E-City, 1001 Zhongshanyuan Road, Shuguang Community, Xili Subdistrict, Nanshan District, Shenzhen, China.