

T1 Pro 1-Blade Electric Shaver

User Manual

laifen

IMPORTANT SAFETY INSTRUCTIONS

When using an electrical appliance, basic precautions are required to always be followed, including the following:

PLEASE READ ALL INSTRUCTIONS BEFORE USING. SAVE THESE INSTRUCTIONS

⚠ DANGER

To reduce the risk of electric shock:

1. If the appliance falls into water while charging, do not reach into the water for it. Unplug the appliance immediately.
2. Do not use while bathing or in the shower.
3. Except when charging, always unplug this appliance from the electrical outlet immediately after using.
4. Do not clean the appliance while it is charging.

⚠ WARNING

To reduce the risk of burns, fire, electric shock, or injury to persons:

1. This appliance is not intended for use by persons (including children) with reduced physical, sensory or mental capabilities, or lack of experience and knowledge, unless they have been given supervision or instruction concerning use of the appliance by a person responsible for their safety. Children should be supervised to ensure that they do not play with the appliance.
2. Use this appliance only for its intended use as described in the User Manual. Do not use attachments not recommended by the manufacturer.
3. Please check the entire appliance, charging cable, and accessories regularly for damage. If any damage is found, stop using it immediately and replace or repair it through official channels. Keep the charging cable away from heated surfaces.
4. Never drop or insert any object into any opening.
5. Do not use outdoors or operate while aerosol (spray) products are being used.
6. Do not use this appliance with a damaged or broken shaver head, as it has the potential to result in facial injury.
- 7.
8. This appliance must only be supplied at Safety Extra Low Voltage corresponding to its markings.

9. This shaver is waterproof and can be cleaned under an open water tap.



Warning: Unplug the charging cable before cleaning the appliance with water.

⚠ CAUTION

1. This appliance complies with the safety standards for electromagnetic devices. If you have a pacemaker or other implanted device, consult your physician or the implant manufacturer prior to use.
2. Battery terminals should be isolated from metal objects to avoid short circuits.
3. This appliance contains a non-replaceable battery. When the battery reaches the end of its lifespan, it should be properly handled by professionals according to the disassembly instructions in the User Manual and local recycling regulations.
4. If a battery leak is detected, stop using the appliance immediately. Dispose of the leaking battery in accordance with local environmental laws and guidelines. Do not discard it with regular household waste. If battery fluid leaks and accidentally contacts your eyes, do not rub your eyes. Rinse with clean water (such as tap water) and seek medical attention immediately. Recommended ambient temperature for charging is 0°C – 30°C (32°F – 86°F). It may take longer to charge or the battery may fail to charge properly in extremely high or low temperatures.
5. Never use compressed air, scouring pads, abrasive cleaning agents or aggressive liquids such as petrol or acetone to clean the appliance.
6. Enable Travel Mode to lock the appliance when transporting it to prevent accidental activations.
7. To maintain optimal performance, we recommend you replace the shaver head once a year. If it is damaged or deformed in any way, replace it immediately.
8. It's normal for your skin to feel slightly irritated after your first few shaves. Give yourself an adjustment period of two to three weeks to adapt.
9. Do not share the appliance with others as doing so may cause an infection or inflammation.

Charging Information

If there is water inside the charging port, be sure to dry it thoroughly before charging.

1. A third-party adapter must be purchased separately. Users must use a 5V adapter, preferably one with an IPX4 rating or higher. Avoid charging in humid environments such as bathrooms to ensure electrical safety.
2. Before first use, fully charge the shaver until the power indicator turns a steady white.
3. The shaver cannot be used while charging. Disconnect the charging cable before use.
4. When charging, please take note of the following:
 - Properly connect the USB-C side of the charging cable to the bottom of the shaver (on a USB - C charging cable, connect either side). Do not force the connection to prevent damage.
 - Plug the charging cable into a power adapter and charge using an AC 100-240V, 50-60Hz power outlet.
 - During charging, the white power indicator will pulse to indicate charging is in progress.
 - When fully charged, the white light will remain steady.
5. Use only with a USB Power Source on a certified product, such as on a computer, receptacle, lamp, class 2 power supply, or automotive adapter.

Disposal and Recycling Information

Correct Disposal of This Product (Waste Electrical & Electronic Equipment) (Applicable in countries with separate collection systems)



This marking on the product, accessories, or literature indicates that the product and its electronic accessories should not be disposed of with other household waste at the end of their working life.

To prevent possible harm to the environment or human health from uncontrolled waste disposal, please separate these items from other types of waste and recycle them responsibly to promote the sustainable reuse of material resources.

Household users should contact either the retailer where they purchased this product, or their local government office, for details of where and how they can take these items for environmentally safe recycling. Business users should contact their supplier and check the terms and conditions of the purchase contract. This product and its electronic accessories should not be mixed with other commercial wastes for disposal.

Battery Disposal Information

This appliance contains Li-ion rechargeable batteries. In general, the life expectancy and battery life of these batteries vary with usage, so avoid leaving them discharged or unused for extended periods. Caution: Do not open, damage, or expose the batteries to conducting materials (metal), moisture, liquid, fire, or heat. Doing so may cause the batteries to leak or explode, resulting in personal injury. The built-in rechargeable batteries contain substances that could potentially harm the environment and may require disassembly for proper recycling, as per your country or region's laws. For professional guidance on battery removal or if the batteries cannot be removed, kindly consult Laifen directly or take the electric shaver to a government-designated recycling center.

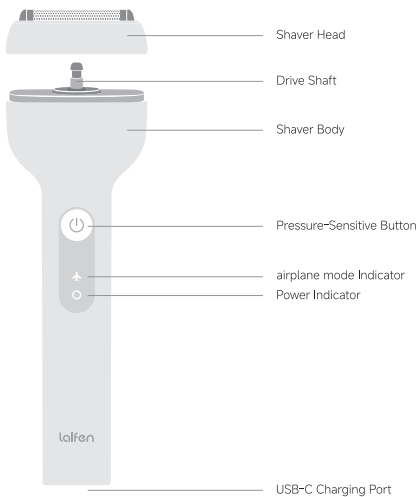


Battery Removal Steps:

1. Ensure the battery is fully depleted before proceeding.
2. Remove all accessories from the appliance.
3. Remove the screws securing the top cover and motor. Carefully detach the cover and motor assembly.
4. Remove the screws securing the battery assembly, then use an insulated tool to carefully detach the assembly before removing the battery.

Informations sur l'appareil

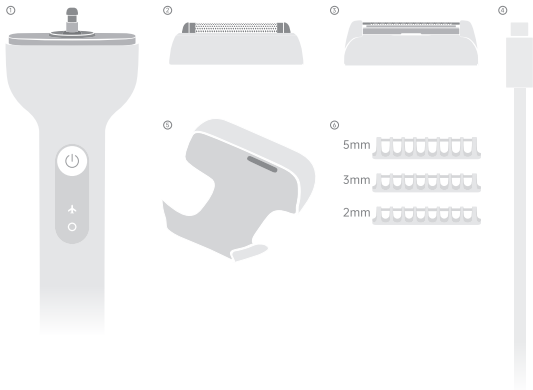
Introduction



Parts and Accessories

Shaver Body^① × 1, Shaver Head^② × 1, Trimmer Head^③ × 1, Charging Cable^④ × 1, Protective Cap^⑤ × 1, Trimmer Guards^⑥ × 3 (5mm, 3mm, 2mm)

* The Trimmer Head and Trimmer Guards are accessories for the Laifen T1 Pro 1-Blade Electric Shaver. If they did not come with your model, they can be purchased separately.



Specifications

Product Name: Laifen T1 Pro 1-Blade Electric Shaver • Model: LFEST1 • Working Voltage: 3.8V
• Charging Input: 5V 1A • Battery Capacity: 530mAh • Charging Time: ~1 Hour • IP
Code: IPX7

Shaver Head and Trimmer Guard Information

Selecting the Right Shaver Head

Shaver Head



Features: Ultra-thin 0.055mm foil to clean shave your beard.

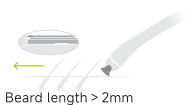
Suitable for: Individuals with beard lengths of 2mm or less, seeking a clean and well-groomed look.

Trimmer Head



Features: Skin-friendly trimming for a close shave without irritation, cutting hair down to 0.4mm.

Suitable for: Individuals with beard lengths over 2mm, ideal for shaving longer beards or styling.



If beard length >2mm, use the long-hair trimmer head first



Trimmer Guards



Features: 3 interchangeable Trimmer Guards to help in trimming your beard to lengths of approximately 5mm, 3mm, and 2mm.

Suitable for: Individuals looking to maintain their beard at a certain length while keeping a clean and tidy appearance.

* The Trimmer Head and Trimmer Guards are accessories for the Laifen T1 Pro 1-Blade Electric Shaver. If they did not come with your model, they can be purchased separately.

Use, Installation, and Removal of Trimmer Guards

The click-on Trimmer Guards allow you to trim hair to different lengths. These can only be used with the Trimmer Head, not the Shaver Head.

Installation: Align one end of the Trimmer Guard with the Trimmer Head, slide it along the edge, and press firmly toward the other end until it clicks into place.



Removal: Hold one end of the Trimmer Head with your index finger and use your thumb to push the Trimmer Guard in the direction indicated by the arrow.



Starting Your Shaving Experience

Step 1: Enabling/Disabling airplane mode

This shaver features an airplane mode, designed to prevent accidental activations during storage or transport.

Enable: While airplane mode is disabled, long press the power button for 2 seconds until the airplane mode indicator turns on.

Disable: While airplane mode is enabled, long press the power button until the airplane mode indicator turns off.

Step 2: Turning the Shaver On/Off

While the shaver is off and airplane mode is disabled, press the power button briefly to turn it on. Press it again to turn it off.

Step 3: Start Shaving

Place the foil of the shaver at a right angle against the skin and shave against the direction your beard grows. Do not apply excessive pressure to avoid potential skin irritation or injury. For the beard under the chin and around the throat, stretch the skin to lift the hairs for a better shave.





Precision grooming



* To prevent damage to the shaver foil, do not use just a section of the shaver foil for shaving.

Indicator Status

airplane mode Indicator	When enabling airplane mode, turns on and off quickly and a sound is played.	
	When disabling airplane mode, stays lit until airplane mode is disabled and a sound is played.	
Power Indicator	During Use	Steady White Light: Over 15% battery remaining.
		Blinking Red Light: Battery is low, please charge the shaver.
		Steady Red Light : Battery is critically low, please charge the shaver.
	While Charging	Steady White Light: Fully charged.
Blinking White Light: Charging in progress.		

Cleaning and Maintenance

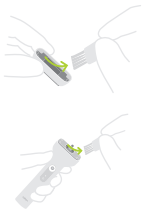
To maintain optimal performance, we recommend you clean your shaver regularly.

* Before cleaning, unplug the charging cable from the shaver.



1. Turn off the power and rinse the shaver head under running water.

Cleaning the Shaver Head



2. Use a small brush to remove hair from the shaver head.

Rinsing with Water



3. Remove the shaver head and rinse both the head and the drive shaft with clean water.

4. After rinsing, gently shake the shaver body a few times to remove excess water, then wipe off any remaining droplets with a dry cloth.

* When shaking the shaver, be careful not to hit the sink or other objects, as this may cause damage.



5. Let the shaver air dry in a cool place away from direct sunlight.

- * Do not use any cleaning agents other than clean water, as this may cause damage.

Using Lubricating Oil

To maintain long-term shaving comfort and optimal performance, it is recommended to regularly use lubricating oil. Follow these steps:



1. Turn off the shaver.
2. Apply one drop of Lubricating Oil to the shaver foil.
3. Turn on the shaver and run it for approximately ten seconds.
4. Turn off the shaver and wipe off any excess oil with a soft cloth.

* Lubricating oil and brush are not included with this shaver.

Troubleshooting

Issue	Possible Cause	Solution
Poor shaving performance	Hair or dirt clogging the shaver	Clean the shaver head.
	Damaged or worn-out shaver head	Replace the shaver head.
Power button not working	The shaver is charging	Unplug the charging cable before use.
	airplane mode is enabled	Long press the power button to disable airplane mode.
	The battery is out of power	Charge the shaver.
	Power button malfunction	Contact Customer Support for assistance (see below).
Indicator light not lighting up during charging	Poor connection between the charging cable and port	Clean the charging port.
	Damaged charging cable	Replace the charging cable.
	Indicator light or circuit malfunction	Contact Customer Support for assistance (see below).
Charging time too long	Battery or circuit malfunction	Contact Customer Support for assistance (see below).
Skin irritation after shaving	Excessive pressure	Do not apply excessive pressure to avoid potential skin irritation or injury.
	Skin has not adapted yet	After using for 2 - 3 weeks, your skin will adapt to the shaver and the sensitivity will subside.

Laifen Customer Support: csteam@laifentech.com

Return Policy

Return Service

The return period may vary depending on the regulations of the region and store where the order was placed. Please refer to the order purchase page or relevant store information for the specific return period. If you have any questions, please contact Customer Support at csteam@laifen-tech.com or by phone at (+1) 833-609-2040, available Monday through Sunday from 6:00 AM to 5:00 PM PST.

To be eligible for a refund, you must:

- Return the appliance with all included accessories and gifts.
- Return it in its original packaging.
- Provide valid proof of purchase.
- Ensure the appliance and accessories are in resalable condition.

Return shipping costs:

- Returns due to product quality issues will have shipping costs covered by Laifen.
- Returns for any other reasons are the responsibility of the customer.
- All costs associated with the return, including shipping fees, will be borne by the customer.

Warranty & Support

Laifen 2-year limited guarantee*

Laifen offers a 2-year limited warranty on the electric shavers (excluding the shaver head). Within two years from the date of purchase, if your appliance fails to function properly due to material or workmanship defects, we will provide repair or replacement services. Please note that depending on the availability of stock, the replacement may come in a different color or be an equivalent model. The warranty is valid only in the country or region of purchase.

Laifen's Limited Warranty does not override your statutory rights under local consumer laws. Coverage may differ based on regional legal requirements.

What is not covered under warranty:

- Shaver Head
- Purchased from unauthorized resellers.
- Warranty period has expired.
- Appliances without a valid proof of purchase.
- Appliances that have been modified, altered, or repaired through unofficial channels.
- Appliances that were used for any purpose other than shaving.
- For professional or commercial use.
- Damage caused by operations that are not in accordance with the Laifen User Manual.
- Damage caused by any misuse or accident.
- Damage caused by excessive usage that is not normal wear and tear.
- Damage or loss of the charging port waterproof silicone plug.
- Product aging and wear caused by normal use, which do not affect the proper functioning of the product (e.g., natural consumption of components such as blades and batteries, normal wear and tear).

Get professional assistance from Laifen

If you have any further inquiries regarding our warranty policy or product usage, please feel free to contact us via email at csteam@laifentech.com or by phone at (+1) 833-609-2040, available Monday through Sunday from 6:00 AM to 5:00 PM PST. We greatly appreciate your feedback and look forward to assisting you.

For more information on product usage, please visit
Laifen official website: www.laifentech.com

Manufacturer: Shenzhen Shuye Technology Co., Ltd.
Address: Room 1301, Building T7, Qianwan 1st Road No. 399, Qianhai Kerry
Business Center, Nanshan, Shenzhen, Guangdong, China.