

A woman with blonde hair is lying on her back against a bright blue background. She is holding a large pink balloon to her face with her right hand and a smaller pink vibrator in her left hand. She is wearing a light yellow short-sleeved top.

LELO

**SONA™**  
Sonic Clitoral Massager

USER MANUAL

BEDIENUNGSANLEITUNG

MANUEL D'UTILISATION

MANUAL DE USUARIO

MANUALE D'USO

使用指南 - 使用說明書

**The clitoris is the only feature known to science  
whose sole function is to stimulate pleasure.  
Use it wisely, often and with care.**

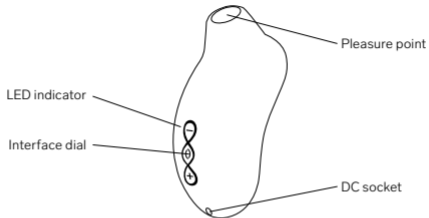
Congratulations on acquiring the SONA Clitoral Massager. Before getting more closely acquainted with it, please take a moment to look through this user manual.

**IMPORTANT:** Your pleasure object has been locked for transportation. To unlock, simply connect the charger or press and hold the + and – buttons together for 5 seconds. Repeat to relock.

## GETTING STARTED

- Before first use, charge your SONA for 2 hours.
- Once charged, press the + button to activate.
- You can switch between 8 vibration patterns using the ( ) button.
- Use the + and – buttons to adjust vibration strength.
- Press the – button to reduce vibration strength to a level you are comfortable with. Keep SONA in contact with the body to check vibration strength.
- Holding down the – button will turn off your SONA.

## GETTING TO KNOW YOUR SONA



### CRUISE CONTROL (For SONA Cruise only)

Cruise Control is a fully automatic function, not a setting that requires you to turn it on or off. Cruise Control is designed to detect any slowing motion of the motor and can boost the motor up again via PWM (Pulse Wave Modulation). In doing so, Cruise Control ensures that you enjoy consistent power and intensity, even while SONA is pressed firmly against your body.

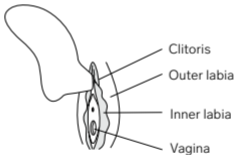
**Cruise Control™**  
TECHNOLOGY

## USING YOUR SONA

- How to hold



- Where to place on the body



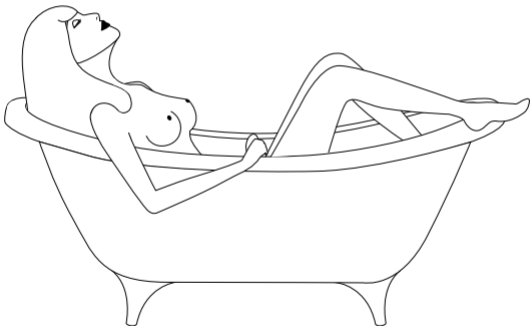
**Tip:** for the most pleasurable sensation, apply a liberal amount of LELO Personal Moisturizer to your body and to SONA before and during use.



## TIPS ON USING SONA

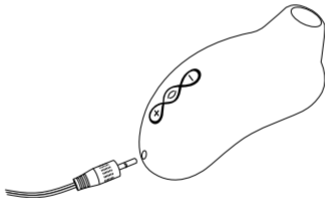
- **Positions to use**

The bedroom isn't the only perfect place for SONA. Reclining in a warm bath helps to add new sensations and techniques for exploration.



## CHARGING YOUR SONA

- Insert the DC plug into the DC port at the base of your SONA.
- Insert the mains plug into a wall socket. The LED on the interface of your SONA will pulse to indicate it is charging. When it is fully charged (after c. 2 hours), the LED will emit a steady glow.
- When the battery is running low, the LED on your SONA will emit a blinking white light.



**Only use original chargers provided by LELO with your SONA.**

## **CLEANING, STORAGE, AND SAFETY**

Your SONA will offer years of enjoyment with proper maintenance and care.

Using your SONA with hand creams or silicone-based lubricants may make the silicone permanently tacky.

SONA is fully waterproof, making cleaning simple. Rinse and spray with LELO Toy Cleaner, then rinse again and allow to dry. A cotton swab can be used to clean the inside of the 'mouth'.

Always clean your SONA thoroughly before and after each use. You can wash the silicone with warm water and antibacterial soap, rinse with clean hot water and pat dry with a lint-free cloth or towel. Never use cleansers containing alcohol, petrol or acetone.

Avoid leaving your SONA in direct sunlight and NEVER expose it to extreme heat. Store your SONA in a dust-free place and keep it away from products of other materials.



## **TROUBLESHOOTING**

### **The LED on your SONA does not pulse when charger is connected?**

- Battery is drained and will require several minutes to acknowledge that it is being charged.
- Charger is not properly connected. Check wall and DC sockets.

### **Your SONA does not activate when + is pressed?**

- The battery is empty. Recharge your SONA.
- The interface of your SONA is locked. Hold down + and – for 5 seconds.

If you experience any other problems with your SONA or if you have any questions regarding operation, please contact: [\*\*customercare@lelo.com\*\*](mailto:customercare@lelo.com)

## SPECIFICATIONS

<b>MATERIALS</b>	Body-safe Silicone / ABS
<b>AVAILABLE COLORS</b>	Cerise, Pink, Black
<b>MAX NOISE LEVEL</b>	50dB
<b>FREQUENCY</b>	120Hz
<b>MODES</b>	8
<b>INTERFACE</b>	3-button
<b>BATTERY</b>	Li-Ion 500mAh 3.7V
<b>USER TIME</b>	Up to 1 hour
<b>CHARGE TIME</b>	2 h at 5.0V 500mA
<b>STANDBY</b>	Up to 90 days

## **REGISTER WARRANTY**

To activate your 1-Year Limited Warranty, register the number provided on the LELO Authenticity Card at [LELO.COM/SUPPORT](http://LELO.COM/SUPPORT).

## **1-YEAR WARRANTY**

LELO warrants this pleasure object for a period of ONE (1) YEAR, after the date of original purchase, against defects due to faulty workmanship or materials. The warranty covers working parts that affect the function of the pleasure object. It does NOT cover cosmetic deterioration caused by fair wear and tear or damage caused by accident, misuse or neglect. Any attempt to open or take apart the pleasure object (or its accessories) will void the warranty.

If you discover a defect and notify LELO during the warranty period, LELO will, at its discretion, replace the pleasure object free of charge. Claims under warranty must be supported by reasonable evidence of the date of claim is within the warranty period. To validate your warranty, please keep your original purchase receipt together with these warranty conditions for the duration of the warranty period.

To claim your warranty, you must log in to your account at [LELO.COM](http://LELO.COM) then select the option to make a warranty claim. Shipping costs are non-refundable. This undertaking is in addition to consumer's statutory rights and does not affect those rights in any way.

## DISPOSAL INFORMATION

**Disposal of old electronic equipment (applicable in the EU and other European countries with separate waste collection systems):**

The crossed-out dustbin symbol indicates that this pleasure object should not be treated as household waste, but rather be brought to the appropriate collectionpoint for recycling of electrical and electronic equipment.



**Disclaimer:** Users of this product do so at their own risk. Neither LELO nor its retailers assume any responsibility or liability for the use of this product. Changes or Modifications not expressly approved by the manufacturer could void the user's authority to operate the equipment.

**Model may be changed for improvements without notice.**

© 2017/2018 LELOi AB. ALL RIGHTS RESERVED.  
DESIGNED AND DEVELOPED BY LELO SWEDEN  
MANUFACTURED FOR LELO IN CHINA

**WEBSITE:** [WWW.LELO.COM](http://WWW.LELO.COM)

**SUPPORT:** [CUSTOMERCARE@LELO.COM](mailto:CUSTOMERCARE@LELO.COM)

**[www.lelo.com](http://www.lelo.com)**