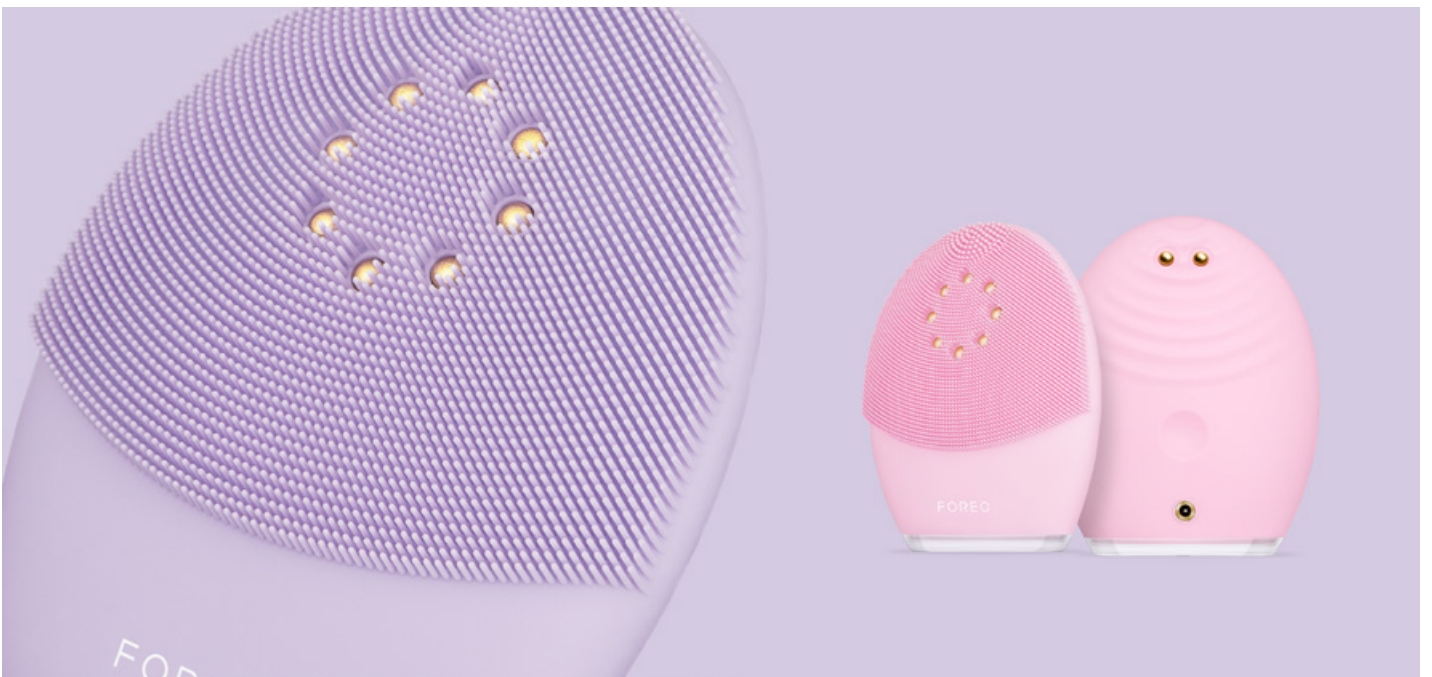


FOREO

LUNA™ 3 plus

**THERMO-FACIAL
CLEANSING
& FIRMING MASSAGE**
plus Microcurrent



FULL USER MANUAL



GETTING STARTED

Congratulations on taking the first step toward discovering smarter skincare by acquiring LUNA™ 3 plus. Before you begin to enjoy all the benefits of sophisticated skincare technology in the comfort of your home, please take a few moments to carefully read the instructions in this manual.

Please READ ALL INSTRUCTIONS BEFORE USE and utilize this product only for its intended use as described in this manual.

⚠️ WARNING: NO MODIFICATION OF THIS EQUIPMENT IS ALLOWED.

LUNA™ 3 plus OVERVIEW

Put the power of beauty into your own hands with the only beauty-tech in the world that features heated cleansing and targeted microcurrent in one smart device. Featuring an indulgent skincare ritual, this ultra-soft heated cleansing device melts away impurities while targeted microcurrent restores the skin's youthful radiance. With LUNA™ 3 plus clean, younger-looking skin has never been more attainable.

GETTING TO KNOW LUNA™ 3 plus

T-SONIC™ PULSATIONS

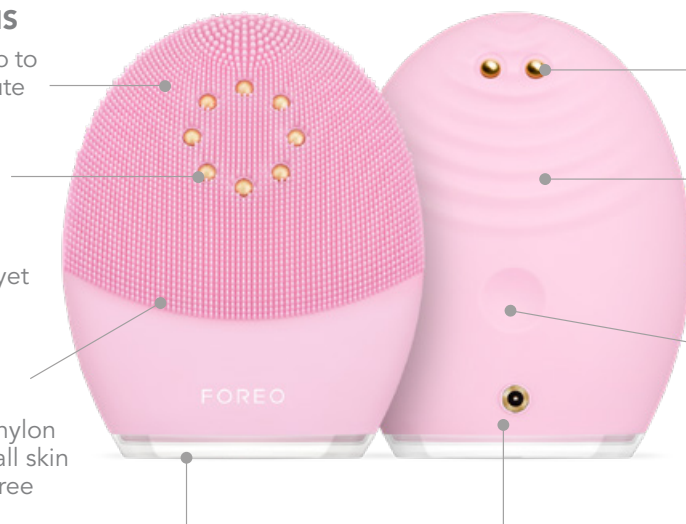
Effectively cleanse with up to 8,000 pulsations per minute at 16 different speeds

THERMO-TECH

Thermal touchpoints warm skin to the perfect temperature for a deep yet gentle cleanse

EXTRA-SOFT & HYGIENIC SILICONE

35x more hygienic than nylon bristles and suitable for all skin types. BPA & phthalate free



MICROCURRENT PINS

Deliver microcurrent directly to skin for non-invasive age renewal

MICROCURRENT MODE

Targets signs of aging for firm, younger-looking skin

UNIVERSAL POWER BUTTON

Turns device on and off and puts device in Bluetooth pairing mode

INDICATOR LIGHT

Flashes to indicate when device is in Bluetooth pairing mode or when device needs to be charged

CHARGING PORT

Up to 125 uses per charge. 100% waterproof closure



2ML SAMPLE SERUM

Use with microcurrent mode for optimal conductivity and enhanced results



INTERACTIVE FOREO APP

Control device settings, cleanse intensity & access microcurrent treatments



USB CABLE

Charge anytime, anywhere



TRAVEL POUCH

Conveniently stores device for skincare anywhere

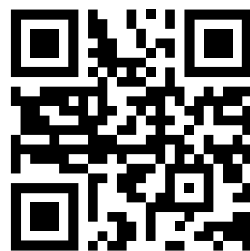
UNLOCK YOUR DEVICE

Before first use, download the FOREO For You mobile app to unlock and register your device by following these simple steps;

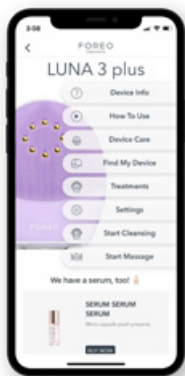
1. Download the FOREO For You app on your mobile phone
2. Log in to your account or sign up for a new one
3. Add device (on the top of your screen)
4. Choose device series
5. Press and hold the Power button to connect your device to the mobile app
6. Fill in the purchase information

And your device is ready to use!

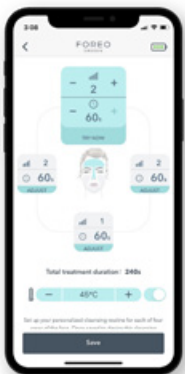
www.foreo.com/app



FOREO FOR YOU MOBILE APP



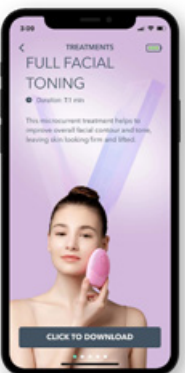
FOREO For You mobile app offers instructions on how to use and take care of your LUNA™ 3 plus, control settings, access video-guided routines, and find your device in case you've misplaced it.



SETTINGS

Set your preferences for Cleansing mode, and device will remember them for offline use.

Adjust the cleansing temperature, cleansing duration up to 240s and up to 16 intensities of T-Sonic™ pulsations for each part of your face—both cheeks, forehead, and jaw.



TREATMENTS

Choose between 5 pre-programmed massage routines and simply follow video instructions.

- **Full Facial Toning:** lifts and firms entire face (2 min)
- **Eye Treatment:** lifts eye contour (4 min)
- **Laugh Line:** smoothes laugh lines and lip area (6 min)
- **Forehead Smoothing:** targets brows and forehead (2 min)
- **Magic Mouth:** sculpts mouth and cheeks (5 min)

Start Cleansing and Start Massage feature the Mirror mode, which allows you to use your mobile device as a mirror while performing the cleansing or massage treatments.

HOW TO USE LUNA™ 3 plus

CLEANSING MODE

1. Remove all makeup, dampen skin and then apply the FOREO Micro-Foam Cleanser.
2. Press universal button again to activate cleansing mode.
3. Cleanse using circular movements on cheeks and forehead, gliding up and down the nose.
4. Press and hold button for 3 seconds to turn off device.
5. Rinse and pat your face dry. Apply other skincare products, if any.

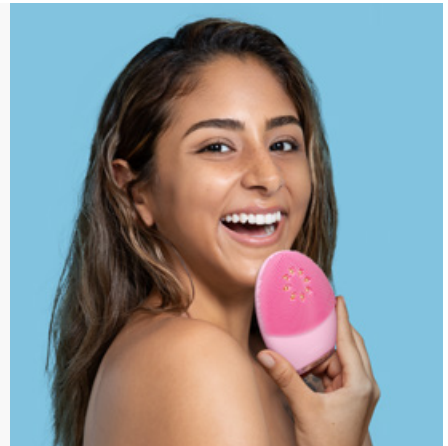


MICROCURRENT MODE

1. Start with clean, dry skin.
2. Apply FOREO SERUM SERUM SERUM to treatment area.
3. Follow instructions in the FOREO app to activate your preferred microcurrent treatment.
3. Follow with moisturizer of your choice.

* Device will automatically switch off after routine is complete.

CAUTION: LUNA™ 3 plus must be completely dry before activating your microcurrent treatment for safe and effective use.



CLEANING YOUR DEVICE

Always clean your device thoroughly after use. Wash the brush surface with water and soap, then rinse with warm water. Avoid using clay-based, silicone-based or grainy cleansers, exfoliators or scrubs, as they may damage the device's soft silicone touchpoints. Pat dry with a lint-free cloth or towel. After use, we recommend spraying the device with FOREO Silicone Cleaning Spray and rinsing with warm water for optimal results.

NOTE: Never use cleaning products containing alcohol, petrol or acetone, as they may irritate the skin and damage the silicone.

COMPLEMENTARY PRODUCTS



Micro-Foam Cleanser

This creamy cleanser transforms into delicate micro-bubbles that lift impurities from deep within pores, gently purify skin, and remove excess oil. Its special formula, containing skin-replenishing amino acids and vitamin E, helps moisturize and protect your skin so it's left feeling soft and looking vibrant.

DERMATOLOGIST TESTED - FRAGRANCE-FREE - VEGAN - CRUELTY-FREE



SERUM SÉRUM SERUM

The ultra-soothing formula glides effortlessly over your skin and works seamlessly with LUNA™'s firming massage mode and safely delivers microcurrent from device to skin. The antioxidant power of squalane gives your skin a healthy, youthful look, while Hyaluronic acid locks in moisture to give you softer, smoother, and super-hydrated skin.

DERMATOLOGIST TESTED - FRAGRANCE-FREE - CRUELTY-FREE

IMPORTANT FOR OPTIMUM SAFETY:

- If you have a skin condition or any medical concerns, please consult a physician before use.
- Do not use if you have any existing medical conditions such as epilepsy, a hemorrhagic disease, cancer, tumors, or perceptual disturbance.
- Do not use if you have any implanted medical device or any other electronic instrument or body aids.
- Do not use if you have had a laser treatment, chemical peel, or have any other form of injured or damaged skin.
- Do not use the microcurrent feature on the chest / breast area, eye area (circular muscle within the orbital rim), mid-line (bone) of neck, or the genitals / groin area.
- Do not use if you have had cosmetic surgery on your face.
- If you have suspected or diagnosed heart disease, follow precautions recommended by your physician.
- The long-term effects of microcurrent are unknown.
- The safety of the device for use during pregnancy has not been established. If you are pregnant, consult your physician before using this product.
- There may be a perception of flashing lights during the use of your device, resulting from the stimulation of your optic nerve. If you notice this condition constantly without the use of your device, consult your physician.
- Electronic monitoring equipment, such as ECG monitors and ECG alarms, may not operate properly when the device is in use.
- Cleansing with LUNA™ 3 plus should be comfortable – if you experience discomfort, discontinue use immediately and consult a physician.
- Exercise particular care when cleansing the under-eye regions and do not bring the device into contact with the eyelids or eyes themselves.
- For reasons of hygiene, we do not recommend sharing your LUNA™ 3 plus with anyone else.
- Avoid leaving your LUNA™ 3 plus in direct sunlight and never expose it to extreme heat or boiling water.
- Close supervision is necessary when this device is used by, on, or near children, as well as those with reduced physical and mental abilities.
- Discontinue use if this product appears damaged in any way. This product contains no serviceable parts.
- Given the efficiency of the FOREO cleansing routine, we recommend that you do not use LUNA™ 3 plus for more than 3 minutes at a time when in cleansing mode.
- Do not use the device in microcurrent mode if it has been submerged in water. LUNA™ 3 plus should be completely dry before activating the microcurrent function.
- A slight tingling sensation may occur while using the device. Lowering the intensity may reduce or eliminate this sensation.
- The device is intended for cosmetic use on the face. Any harmful consequences resulting from misuse, application to other body areas, connection to improper voltage sources, dirty conductive solution or spheres, or any other improper applications are not the responsibility of FOREO.
- Use this device only for its intended use as described in this manual. If you do not find the answer to your specific question, or if you have any other questions regarding the device's operation, please visit www.foreo.com

TROUBLESHOOTING

PRECAUTIONS TO BE TAKEN IN THE EVENT OF CHANGES IN THE PERFORMANCE OF LUNA™ 3 plus.

If LUNA™ 3 plus is not activated when pressing the center button:

- Battery is empty. Recharge using USB charging cable for up to 4 hours until fully charged and then restart your device by holding down the power button.

If LUNA™ 3 plus cannot be switched off and/or interface buttons do not respond:

- Microprocessor is temporarily malfunctioning. Press and hold power button to restart the device.

If LUNA™ 3 plus won't sync to the FOREO app:

- Ensure that your device is fully charged and that your Bluetooth is turned on.
- Switch your Bluetooth off and then on again to try reconnecting.
- Close the FOREO app and then reopen it to start the process over.
- Delete and reinstall the application - perhaps the application simply needs to be updated.
- After deleting and reinstalling the application, make sure to restart your phone.
- Delete your phone's cookies and cache memory
- Ensure that your mobile's operating system has been updated to the latest version.

WARRANTY TERMS & CONDITIONS

REGISTER WARRANTY

To activate your 2-Year Limited Warranty register through the FOREO app, or visit foreo.com/product-registration for more information.

2-YEAR LIMITED WARRANTY

FOREO warrants this device for a period of TWO (2) YEARS after the original date of purchase against defects due to faulty workmanship or materials arising from Normal Use of the device. The warranty covers working parts that affect the function of the device. It does NOT cover cosmetic deterioration caused by fair wear and tear, or damage caused by accident, misuse or neglect. Any attempt to open or take apart the device (or its accessories) will void the warranty.

If you discover a defect and notify FOREO during the warranty period, FOREO will, at its discretion, replace the device free of charge. Claims under warranty must be supported by reasonable evidence that the date of the claim is within the warranty period. To validate your warranty, please keep your original purchase receipt together with these warranty conditions for the duration of the warranty period.

To claim your warranty, you must log in to your account at www.foreo.com and then select the option to make a warranty claim. Shipping costs are nonrefundable. This undertaking is in addition to your statutory rights as a consumer and does not affect those rights in any way.

DISPOSAL INFORMATION

Disposal of old electronic equipment (applicable in the EU and other European countries with separate waste collection systems).



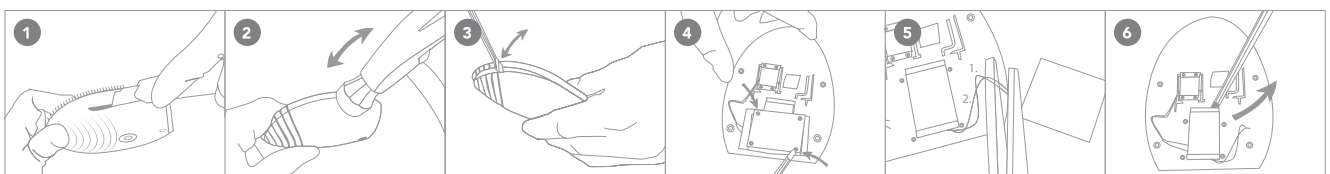
The crossed-out dustbin symbol indicates that this device should not be treated as household waste, but rather be brought to the appropriate collection point for recycling of electrical and electronic equipment. By ensuring this device is disposed of correctly, you will help prevent potentially negative consequences for the environment and human health which could be caused by inappropriate waste handling of the product. The recycling of materials will also help conserve natural resources.

For more detailed information about the recycling of your device, please contact your local household waste disposal service or your place of purchase.

BATTERY REMOVAL

NOTE: This process is not reversible. Opening the device will void its warranty. This action must only be undertaken when the device is ready to be disposed of.

Because this device contains a lithium-ion battery, the battery must be removed before disposal and should not be thrown away with household waste. To remove the battery, open the inner plastic shell after removing silicone outer layer and remove the battery to be disposed of in accordance with your local environmental regulations. Wear gloves during this process for your safety. Detailed visual instructions are provided below:



SPECIFICATIONS

MATERIALS: Body-safe silicone, ABS plastic, polycarbonate, zinc alloy, aluminium & gold

COLOR: Pink & Lavender

SIZE: 102*39.2 *82.5mm

WEIGHT: 155g

BATTERY: Li-ion 2000mAh 3.7V

USAGE: Up to 125

STANDBY: 90 days

FREQUENCY: 100 Hz

MAX NOISE LEVEL: <50dB

INTERFACE: 1- button

MICROCURRENT LEVELS: 15

SPEED LEVEL: 16

Disclaimer: Users of this device do so at their own risk. Neither FOREO nor its retailers assume any responsibility or liability for any injuries or damages, physical or otherwise, resulting, directly or indirectly, from the use of this device. Further, FOREO reserves the right to revise this publication and to make changes from time to time in the contents thereof without obligation to notify any person of such revision or changes.

Any changes or modifications not expressly approved by the party responsible for compliance could void the user's authority to operate the equipment. This device complies with part 15 of the FCC Rules. Operation is subject to the following two conditions: (1) This device may not cause harmful interference, and (2) this device must accept any interference received, including interference that may cause undesired operation.

RF exposure statement: This equipment complies with FCC radiation exposure limits set forth for an uncontrolled environment. The device has been evaluated to meet general RF exposure requirement. The device can be used in portable exposure condition without restriction.

FREQUENTLY ASKED QUESTIONS

BASICS

1. WHAT SHOULD I DO AFTER I RECEIVE MY LUNA™ 3 plus DEVICE?

Congratulations on discovering smarter skincare! First things first - download the FOREO For You app for free to unlock and register your device.

2. WHAT COMES WITH MY LUNA™ 3 plus DEVICE?

1 LUNA™ 3 plus Device, 1 USB Charging Cable, 1 User Manual, 1 Quick Start Guide, & 1 Travel Pouch.

3. HOW DO I TURN MY LUNA™ 3 plus DEVICE ON AND OFF?

Press the power button on your LUNA™ 3 plus device to turn it on, and hold it for 3 seconds to turn off the device. After completing a pre-set routine, the device will turn off automatically.

4. MY DEVICE IS NOT ACTIVATED WHEN PRESSING THE POWER BUTTON?

The battery is dead. Recharge using a USB charging cable until fully charged and then restart your device by holding down the power button.

5. HOW DO I CHARGE MY LUNA™ 3 plus?

LUNA™ 3 plus is USB-rechargeable, with a 2-hour charge delivering up to 125 uses (based on a 1-minute treatment time per use). The USB charging cable is provided with the device.

6. WHY DOESN'T MY CHARGER GO ALL THE WAY IN?

The charging cable for your LUNA™ 3 plus is not supposed to go all the way into the device. It is completely normal for it to stick out a bit from the device.

7. MY CHARGE DIDN'T LAST 125 USES.

125 uses refer to 125 minutes, so the duration of the charge depends on how often and for how long the device is used.

8. IS THE CHARGING POINT ON LUNA™ 3 plus WATERPROOF?

Yes, the charging point is waterproof which means you can use LUNA™ 3 plus in the shower in the cleansing mode. The microcurrent mode can't be used in the shower. Do not use the device in microcurrent mode if it has been submerged in water. LUNA™ 3 plus should be completely dry before activating the microcurrent function. Make sure the device is completely dry before charging and do not use it while charging. Once you are done using your device, store it in a dry area. Do not leave the device submerged in water.

9. HOW DO I ADJUST THE INTENSITY OF THE T-SONIC™ PULSATIONS, HEATING, AND MICROCURRENT?

LUNA™ 3 plus is designed with 16 different cleansing intensities for your selection, you need to connect your device to the FOREO app via Bluetooth to adjust and select your preferred user setting.

10. HOW DO I ACCESS THE FIRING MESSAGE MODE?

Connect your device to the FOREO app via Bluetooth to choose between 5 pre-programmed video-guided massage treatments.

11. WHAT ARE THE DIFFERENCES BETWEEN SENSITIVE AND NORMAL LUNA™ 3 plus?

LUNA™ 3 plus offers 2 brushes specially designed for your skin.

- LUNA™ 3 plus Sensitive skin features thin bristles for skin prone to inflammation, redness, itching, or dryness.
- LUNA™ 3 plus Normal skin has thicker on top for healthy skin with perfect oil and water balance, feeling neither too dry nor too oily.

THE APP

12. WHY DO I HAVE TO DOWNLOAD THE APP BEFORE USING LUNA™ 3 plus?

All app-enabled FOREO products need to be activated and unlocked via the FOREO For You App the first time they turn them on. This helps us protect against fake/copied FOREO products, and it makes it easier to register the warranty and protect your investment.

13. HOW DO I PAIR MY LUNA™ 3 plus DEVICE WITH THE FOREO APP?

Download the FOREO For You app to your smartphone or tablet and turn on Bluetooth. Press the universal button on your device once to turn it on. A blinking white light indicates your device is in pairing mode. Follow the instructions in the app to register and pair your LUNA™ 3 plus device.

14. DOES LUNA™ 3 plus WORK WITHOUT THE APP?

Yes! The App helps you manage your device settings and access video-guided massages, but you can use LUNA™ 3 plus cleansing mode manually. Simply press the power button to turn on device and press in once again to start the cleansing mode. Video-guided massage treatments can be accessed only through FOREO App.

15. I CAN'T REGISTER MY DEVICE OR MY DEVICE KEEPS DISCONNECTING. WHAT SHOULD I DO?

Follow the steps to troubleshoot the FOREO For You application:

- 1) Delete and reinstall the application - perhaps the application simply needs to be updated
- 2) Ensure that your mobile's operating system has been updated to the latest version (ensure that your mobile phone is running the latest software update)
- 3) After deleting and reinstalling the application, make sure to restart your phone
- 3) Delete your phone's cookies and cache memory
- 5) Ensure that your device is fully charged and that your Bluetooth is turned on

USING LUNA™ 3 plus

16. HOW OFTEN CAN I USE MY LUNA™ 3 plus DEVICE?

LUNA™ 3 plus devices are safe and gentle enough to use every day, either morning or night. We recommend using your LUNA™ 3 plus any time your skin needs a deeper cleanse.

17. HOW LONG CAN I USE IT PER DAY?

Given the efficiency of cleansing, we recommend that you do not use LUNA™ 3 plus for more than 3 minutes per day.

8. CAN I SHARE MY LUNA™ 3 plus WITH OTHER PEOPLE, SUCH AS FAMILY MEMBERS?

For hygiene reasons, we do not recommend sharing your LUNA™ 3 plus with anyone else.

16. CAN LUNA™ 3 plus BE USED FOR REMOVING MAKEUP?

All make-up should be removed before doing the cleansing routine with any of our devices.

17. HOW HARD SHOULD I PRESS WHEN I MOVE MY LUNA™ 3 plus?

There is no need to use any pressure when using LUNA™ 3 plus. Gently cleanse your face using circular movements on the cheeks and forehead, gliding up and down the nose.

18. CAN I USE FOREO LUNA™ 3 plus AROUND THE EYE AREA?

Yes, you can use your LUNA™ 3 plus around the eye area. When doing so, please exercise particular care in the under-eye regions and do not bring the device into contact with the eyelids or eyes themselves. Do not use the microcurrent feature on the eye area (circular muscle within the orbital rim).

19. WHAT KIND OF FACIAL CLEANSER CAN I USE?

You can use the cleanser of your preference as long as it does not contain an ingredient that can damage the silicone of your device. Please avoid using clay-based, silicone-based or grainy cleansers, exfoliators, or scrubs, as they may damage the device's soft silicone touchpoints. For best results, we recommend using FOREO Micro-Foam Cleanser.

20. DO I NEED TO USE FOREO'S SERUM SERUM SERUM WITH MICROCURRENT

Yes, it is essential to use SERUM SERUM SERUM with the device as the serum creates a conductive barrier, effectively and safely transferring microcurrent from the device to your skin. SERUM SERUM SERUM is specially formulated with conductive ingredients such as glycerin, allowing microcurrent devices to work seamlessly without any feeling on the skin.

21. CAN I USE LUNA™ 3 plus IF I HAVE SKIN CONDITIONS SUCH AS ECZEMA OR IF I HAVE HAD A COSMETIC PROCEDURE SUCH AS BOTOX?

We suggest that anyone who suffers from a serious skin condition or has undergone a cosmetic procedure consults their physician or skincare professional before using the device.

22. CAN I USE MY LUNA™ 3 plus DURING PREGNANCY?

The cleansing mode is safe to use if you are pregnant or breastfeeding, but the microcurrent mode is not recommended. .

©2022 FOREO AB. ALL RIGHTS RESERVED.

EU DISTR.: FOREO AB, KARLAVÄGEN 41, 114 31 STOCKHOLM, SWEDEN.

US DISTR.: FOREO INC., 1525 E PAMA LANE, LAS VEGAS, NV 89119, USA.

AUS DISTR.: 6 PROHASKY STREET, PORT MELBOURNE, VIC, 3207 AUSTRALIA.

DESIGNED AND DEVELOPED BY FOREO SWEDEN.

MANUFACTURED FOR FOREO AB.

WWW.FOREO.COM