

FOREO



BEAR™ mini

SMART MICROCURRENT
FACIAL TONING
AND MASSAGE



FULL USER MANUAL



GETTING STARTED

Congratulations on taking the first step toward discovering smarter skincare by acquiring BEAR™ mini. Before you begin to enjoy all the benefits of sophisticated skincare technology please take a few moments to carefully read the instructions in this manual.

Please READ ALL INSTRUCTIONS BEFORE USE and utilize this device only for its intended use as described in this manual.

INTENDED USE: BEAR™ mini is intended for facial and neck stimulation, and is indicated for over-the-counter cosmetic use.

⚠ WARNING: NO MODIFICATION OF THIS EQUIPMENT IS ALLOWED.

BEAR™ mini OVERVIEW

Meet BEAR™ mini - the smart microcurrent facial toning device that combines precision microcurrent and T-Sonic™ pulsations, to give you firmer-looking skin and a youthful glow in minutes!

BEAR™ mini can be used as part of your daily morning or evening skincare routine. Choose from a variety of app-guided facial fitness workouts that use 3 adjustable intensities of microcurrent to recharge skin and help diminish visible signs of aging. During microcurrent workouts, gentle T-Sonic™ pulsations massage the face, boosting skin's radiance and enhancing the absorption of SERUM SERUM SERUM before your workout, and your favorite skincare products afterward.

With BEAR™ mini's Anti-Shock System™, a unique integrated system that uses ultra-smart sensors to scan and measure your skin's resistance to electricity at a rate of 100x per second, the microcurrent intensity is automatically adjusted in just 0.002 seconds (quicker than you can even think of blinking!) to best suit your skin. Anti-Shock System™ eliminates any chance of the microcurrent shocking your skin, resulting in maximum safety and effectiveness for an unwavering quality of treatment every single time.

GETTING TO KNOW BEAR™ mini

MICROCURRENT SPHERES

Deliver precision microcurrent directly to skin for a tighter, more toned complexion.

T-SONIC™ PULSATIONS

Enhance product absorption and gently massage face to boost skin's radiance.

SMART SWEDISH DESIGN

Gently curved to fit facial contours, and lightweight for skincare on-the-go.

CHARGING PORT

Up to 90 uses per charge*.

ANTI-SHOCK SYSTEM™

Scans skin's resistance & adjusts microcurrent intensity for maximum safety & comfort.

UNIVERSAL POWER BUTTON

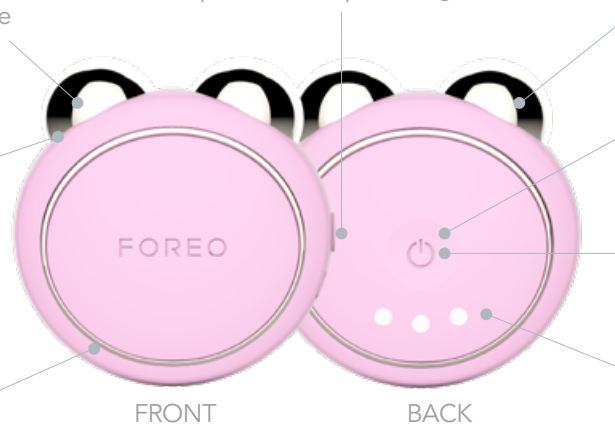
Turns device on and off and puts device in Bluetooth pairing mode.

BLUETOOTH INDICATOR LIGHT

Flashes to indicate when device is in Bluetooth pairing mode.

3 INTENSITY INDICATOR LIGHTS

Light up to indicate the microcurrent intensity setting of your device.



2ML SAMPLE SERUM

Use for optimal conductivity and enhanced results.



USB CHARGING CABLE

Charge anytime, anywhere with USB cable.



INTERACTIVE APP

Access facial workouts & a wider range of intensities.



STAND

Protects and displays your BEAR™ device.

*Based on a 1-minute treatment time per use.

WARNINGS

FOR OPTIMUM SAFETY

- Toning with BEAR™ mini should be comfortable – if you experience any discomfort or irritation, discontinue use immediately and consult a physician.
- Do not use on the chest / breast area, eye area (circular muscle within the orbital rim), mid-line (bone) of neck, or the genitals / groin area.
- Do not use over red skin, raised moles, major arteries (eg. carotid), enlarged capillaries, metal implants, infected areas, or areas with no feeling in them.
- Do not use the device to treat rosacea, moles, warts, open sores, cancerous lesions, or any skin condition.
- Do not use if you have any existing medical conditions such as epilepsy, a hemorrhagic disease, cancer, tumors, or perceptual disturbance.
- Do not use if you have had a laser treatment, chemical peel, or have any other form of injured or damaged skin.
- Do not use if you have had cosmetic surgery on your face.
- Do not use if you have any implanted medical device or any other electronic instrument or body aids.
- Electronic monitoring equipment, such as ECG monitors and ECG alarms, may not operate properly when the device is in use.
- BEAR™ mini should not be used on, near, or by children or those with reduced physical and mental abilities. Close supervision is necessary when this device is used, cleaned or stored near children or those with reduced physical or mental abilities.
- The long-term effects of microcurrent are unknown.
- The safety of the device for use during pregnancy has not been established. If you are pregnant, consult your physician before using this device.
- If you have a skin condition or any medical concerns, please consult a physician before use.
- If you have suspected or diagnosed heart disease, follow precautions recommended by your physician.
- Exercise particular care when toning the under-eye regions and do not bring the device into contact with the eyelids or eyes themselves.
- There may be a perception of flashing lights during the use of your device, resulting from the stimulation of your optic nerve. If you notice this condition constantly without the use of your device, consult your physician.
- A slight tingling sensation may occur while using the device, which is normal and not cause for any concern. Lowering the intensity may reduce or eliminate this sensation.
- Given the efficiency of the FOREO toning routines, we recommend that you do not use BEAR™ mini for more than 3 minutes at a time.
- For reasons of hygiene, we do not recommend sharing your BEAR™ mini with anyone else.
- Do not use while driving or operating heavy machinery.
- Do not use the device when it is plugged in.
- Do not insert any object into any opening of the device.
- Do not use the device if it is overheating or you suspect that it is malfunctioning.
- Avoid leaving your BEAR™ mini in direct sunlight and never expose it to extreme heat or boiling water.
- BEAR™ mini should be completely dry before activating the microcurrent function. Do not use the device if it has been submerged in water, and do not use with wet hands.
- This device should only be used with a SELV power adapter.
- It is recommended that IEC60950 standard power suppliers are used to charge the device.
- Before charging, make sure that the plug and socket are completely dry. Failure to do so may result in electric shock, short circuit, or fire.
- Do not use the device while charging. Discontinue use if this device or charger is not working properly or appears damaged in any way. Use the power cord supplied with your device only.
- The battery must be removed from the appliance before it is disposed of. The appliance must be disconnected from the supply mains when removing the battery, and the battery is to be disposed of safely.
- This product contains no serviceable parts.
- The device is intended for cosmetic use on the face and neck. Any harmful consequences resulting from misuse, application to other body areas, connection to improper voltage sources, dirty conductive solution or spheres, or any other improper applications are not the responsibility of FOREO.
- Use this device only for its intended use as described in this manual. If you do not find the answer to your specific question, or if you have any other questions regarding the device's operation, please visit foreo.com/support.

HOW TO USE BEAR™ mini

CAUTION: BEAR™ mini MUST BE COMPLETELY DRY BEFORE STARTING YOUR MICROCURRENT TREATMENT.

To unlock and register your device for first time use, download the FOREO For You app. Connect to the app via Bluetooth on your smartphone, and press the universal button on BEAR™ mini to sync your device to the app and set up your microcurrent preferences.

1 Clean and dry your face and neck carefully so there is no remaining residue of any kind.

2 Apply a thin layer of SERUM SERUM SERUM to your skin, distributing it evenly across all the areas you wish to treat.

3 **For Pre-Set Routines:**
Select your preferred microcurrent treatment in the FOREO For You app. Follow the instructions on the app and continue as directed. *Device will automatically switch off after routine is complete.*

For Manual Mode:

i) Press the universal button to activate microcurrent. The lights underneath the universal button indicate the microcurrent intensity setting. You can change the microcurrent intensity by quick pressing the universal button once for each level. To turn off T-Sonic™ pulsations, double press the universal button. *Use the app to access a wider range of microcurrent intensities.*

ii) Lightly press both metallic spheres to your face, and gently glide the device across your cheekbones and forehead, around your lips, and over your jawline and neck as desired. *Make sure that both microcurrent spheres are touching your skin at all times. Always glide the device slowly, in an upward motion, and with light pressure for enhanced results.*

iii) Once you have finished your treatment, press and hold the universal button for 3 seconds to turn off the device.

4 Apply any other skincare products of your choice, if desired.



CLEANING YOUR BEAR™ mini

Always clean BEAR™ mini thoroughly after use. Wash the metallic spheres and silicone surface with water and soap, then rinse with warm water. Pat dry with a lint-free, non-abrasive cloth or towel. After use, we recommend spraying the device with FOREO's Silicone Cleaning Spray and rinsing with warm water for optimal results.

NOTE: Never use cleaning products containing alcohol, petrol or acetone, as they may irritate the skin and damage the silicone.

TROUBLESHOOTING

Precautions to be taken in the event of changes in the performance of BEAR™ mini:

If BEAR™ mini is not activated when pressing the universal button:

- Battery is empty. Recharge using USB charging cable for up to 1.5 hours until fully charged and then restart your device by holding down the universal button.

If BEAR™ mini cannot be switched off and/or the universal button does not respond:

- Microprocessor is temporarily malfunctioning. Press and hold the universal button to restart the device.

If BEAR™ mini won't sync to the FOREO For You app:

- Switch your Bluetooth off and then on again to try reconnecting.
- Close the FOREO For You app and then reopen it to start the process over.
- Check to see if the app needs to be updated in your mobile device's app store.

WARRANTY TERMS & CONDITIONS

REGISTER WARRANTY

To activate your 2-Year Limited Warranty, register through the FOREO For You app, or visit foreo.com/product-registration for more information.

2-YEAR LIMITED WARRANTY

FOREO warrants this device for a period of TWO (2) YEARS after the original date of purchase against defects due to faulty workmanship or materials arising from Normal Use of the device. The warranty covers working parts that affect the function of the device. It does NOT cover cosmetic deterioration caused by fair wear and tear, or damage caused by accident, misuse or neglect. Any attempt to open or take apart the device (or its accessories) will void the warranty.

If you discover a defect and notify FOREO during the warranty period, FOREO will, at its discretion, replace the device free of charge. Claims under warranty must be supported by reasonable evidence that the date of the claim is within the warranty period. To validate your warranty, please keep your original purchase receipt together with these warranty conditions for the duration of the warranty period.

To claim your warranty, you must log in to your account at www.foreo.com and then select the option to make a warranty claim. Shipping costs are nonrefundable. This undertaking is in addition to your statutory rights as a consumer and does not affect those rights in any way.

DISPOSAL INFORMATION

Disposal of old electronic equipment (applicable in the EU and other European countries with separate waste collection systems).



EUROPEAN
CONFORMITY



RESTRICTION OF
HAZARDOUS SUBSTANCES
COMPLIANT



PACKAGING IS MADE
OF RECYCLABLE
MATERIAL



GARBAGE WASTE
ELECTRICAL & ELECTRONIC
EQUIPMENT DIRECTIVE

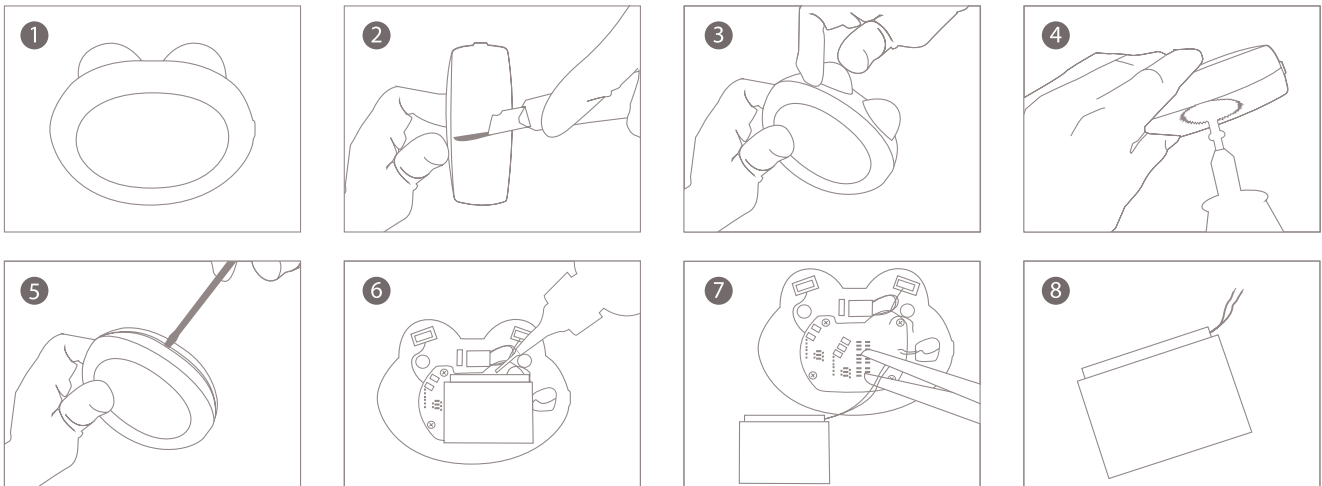
This device should not be treated as household waste, but rather be brought to the appropriate collection point for recycling of electrical and electronic equipment. By ensuring this device is disposed of correctly, you will help prevent the potential negative consequences for the environment and human health which could be caused by inappropriate waste handling of the device. The recycling of materials will also help conserve natural resources.

For more information about the recycling of your device, please contact your local household waste disposal service or your place of purchase.

BATTERY REMOVAL

NOTE: This process is not reversible. Opening the device will void its warranty. This action must only be undertaken when the device is ready to be disposed of.

Because this device contains a lithium-ion battery, the battery must be removed before disposal and should not be thrown away with household waste. To remove the battery, open the inner plastic shell after removing silicone outer layer and remove the battery to be disposed of in accordance with your local environmental regulations. Wear gloves during this process for your safety. Detailed visual instructions are provided below:



SPECIFICATIONS

MATERIALS: Body-Safe Silicone, ABS, PC, Chrome Plated Zinc Alloy

COLOR: Pink / Lavender

SIZE: 57x56x32mm

WEIGHT: 52g

BATTERY: Li-ion 520mAh 3.7V

USAGE: Up to 90 uses per charge*

STANDBY: 90 days

FREQUENCY: 185 Hz

MAX NOISE LEVEL: <50dB

INTERFACE: 1- button

*Based on a 1-minute treatment time per use.

Disclaimer: Users of this device do so at their own risk. Neither FOREO nor its retailers assume any responsibility or liability for any injuries or damages, physical or otherwise, resulting, directly or indirectly, from the use of this device. Furthermore, FOREO reserves the right to revise this publication and to make changes from time to time in the contents thereof without obligation to notify any person of such revision or changes.

CAUTION: Changes or modifications to this unit not expressly approved by the party responsible for compliance could void the user's authority to operate the equipment.

NOTE:

1) This equipment has been tested and found to comply with the limits for a Class B digital device, pursuant to part 15 of the FCC Rules. These limits are designed to provide reasonable protection against harmful interference in a residential installation. This equipment generates, uses and can radiate radio frequency energy and, if not installed and used in accordance with the instructions, may cause harmful interference to radio communications. However, there is no guarantee that interference will not occur in a particular installation. If this equipment does cause harmful interference to radio or television reception, which can be determined by turning the equipment off and on, the user is encouraged to try to correct the interference by one or more of the following measures:

- Reorient or relocate the receiving antenna.
- Increase the separation between the equipment and receiver.
- Connect the equipment into an outlet on a circuit different from that to which the receiver is connected.
- Consult the dealer or an experienced radio / TV technician for help.

2) This device complies with CAN ICES-3 (B)/NMB-3(B). This device complies with Industry Canada licence-exempt RSS standard(s). Operation is subject to the following two conditions:

- This device may not cause interference.
- This device must accept any interference, including interference that may cause undesired operation of the device.

Under Industry Canada regulations, this radio transmitter may only operate using an antenna of a type and maximum (or lesser) gain approved for the transmitter by Industry Canada. To reduce potential radio interference to other users, the antenna type and its gain should be so chosen that the equivalent isotropically radiated power (e.i.r.p.) is not more than that necessary for successful communication.

Model may be changed for improvements without notice.

FAQ

BEAR™ mini BASICS

WHAT SHOULD I DO AFTER I RECEIVE MY BEAR™ mini DEVICE?

Congratulations on discovering smarter skincare! First things first - download the FOREO For You app for free, to unlock and register your device. (For more information, please refer to the section below titled 'THE APP').

HOW DO I START MY FIRST TREATMENT?

First, clean and dry your face and neck carefully. Then apply FOREO's SERUM SERUM SERUM to your skin, distributing it evenly across all areas you wish to treat. Finally, select your preferred facial fitness routine in the app or follow the step-by-step guide for Manual Mode, which can be found above or in the User Manual that came with your BEAR™ mini device.

HOW DO I TURN MY BEAR™ mini DEVICE ON?

Press the universal button on your BEAR™ mini device to turn it on. The indicator light will flash to let you know when the device is in Bluetooth pairing mode.

HOW DO I TURN MY BEAR™ mini DEVICE OFF?

Press and hold the universal button for 3 seconds to turn off the device. After completing a pre-set routine, the device will turn off automatically.

WHAT COMES WITH MY BEAR™ mini DEVICE?

1 BEAR™ mini Device, 1 2ml Sample SERUM, 1 USB Charger Cable, 1 User Manual, 1 Quick Start Guide & 1 Stand.

THE BEAR™ DEVICE

HOW OFTEN CAN I USE MY BEAR™ mini DEVICE?

BEAR™ mini is safe and gentle enough to use every day, either morning or night. We recommend using your BEAR™ mini once in a 24-hour period, for 2 minutes per treatment.

IS MICROCURRENT SAFE?

BEAR™ mini's microcurrent feature is a safe and painless toning technology solely when used with the required protective serum for optimal conductivity. BEAR™ mini must NEVER be activated near water or wet surfaces of any kind.

IS USING A HIGHER MICROCURRENT INTENSITY MORE EFFECTIVE?

Yes. A higher microcurrent intensity equals more power, which results in deeper penetration and more energy going into your skin, making it more effective. However, everyone's skin is different - which is why we recommend testing the device out first (with SERUM SERUM SERUM), to see which microcurrent intensity is best for you.

CAN I ADJUST THE MICROCURRENT INTENSITY LEVEL?

Yes, you can manually adjust the microcurrent intensity by quick pressing the universal button once for each level, or by selecting your preferred intensity through the app.

CAN I ADJUST THE INTENSITY OF THE T-SONIC™ PULSATATIONS?

Yes, you can adjust the intensity of the T-Sonic™ pulsations through the app. If you prefer your treatment without T-Sonic™ pulsations, you can double press the universal button on the device to turn T-Sonic™ pulsations off.

WHAT IS THE DIFFERENCE BETWEEN BEAR™ & BEAR™ mini?

Both BEAR™ & BEAR™ mini deliver microcurrent to stimulate the face and neck, tightening and toning your skin for an improved appearance. However, BEAR™ mini has been designed with a more targeted facial workout in mind, and therefore has small spheres to get into the small crevices of your face, as well as a lower range of 3 microcurrent intensities. BEAR™, on the other hand, has medium-sized spheres to cover a larger surface area while also targeting each line with precision care. BEAR™ also offers a larger range of 5 microcurrent intensities, which are stronger than those offered by BEAR™ mini.

HOW LONG DOES EACH PRE-SET MICROCURRENT TREATMENT LAST?

The routine times will vary from 1-3 minutes depending on which areas are being targeted.

THE APP

WHY DO I NEED TO DOWNLOAD THE FOREO APP BEFORE USING MY BEAR™ mini DEVICE?

All app-enabled FOREO products need to be activated and unlocked via the FOREO For You app the first time they are turned on. This helps protect against fake/copied FOREO products, and makes it easier to register the warranty and protect your investment.

HOW DO I PAIR MY BEAR™ mini DEVICE WITH THE FOREO APP?

Download the FOREO For You app to your smartphone or tablet and turn on Bluetooth. Press the universal button on your device once to turn on. A blinking white light indicates your device is in pairing mode. Follow the instructions in the app to register and pair your BEAR™ mini device.

DOES MY BEAR™ mini DEVICE WORK WITHOUT THE APP?

Yes, you can manually use the device and it does not require use of the FOREO For You app. However, to unlock your device for your first use, you must register it through the FOREO For You app and select your preferences. To activate a pre-set facial fitness workout, you must go directly through the app. Your workout will then automatically sync with your device.

TROUBLESHOOTING & MAINTENANCE

HOW DO I KNOW IF I'M USING MY BEAR™ mini DEVICE CORRECTLY?

When using your BEAR™ mini device, make sure that both microcurrent spheres are touching your skin at all times. If both spheres are not touching your skin, the universal power button will remain lit up. When this light turns off, it means that you are using the device correctly.

WHAT DOES IT MEAN WHEN MY DEVICE IS CONTINUOUSLY BLINKING?

A blinking light around the universal button indicates that your device is in Bluetooth pairing mode or that the device needs to be charged. Follow the instructions in the app to sync your device.

HOW DO I CHARGE MY BEAR™ mini DEVICE?

BEAR™ mini is USB-rechargeable, with a 1.5 hour charge delivering up to 90 uses (based on a 1 minute treatment time per use). The intensity indicator lights under the universal power button flash while the device is charging, to indicate how much battery your device has. When all of the indicator lights are lit, it means your device is fully charged.

HOW DO I CLEAN MY BEAR™ mini DEVICE?

Make sure the device is powered off, then wash the device with soap and water, rinse with warm water and pat dry with a lint-free, non-abrasive cloth or towel. We recommend spraying the device with FOREO's Silicone Cleaning Spray and rinsing with warm water afterward for optimal results.

SERUM SERUM SERUM

DO I HAVE TO USE FOREO'S SERUM SERUM SERUM WITH MY BEAR™ mini DEVICE?

Yes, it is essential to use SERUM SERUM SERUM with the device as the serum creates a conductive barrier, effectively and safely transferring microcurrent from the device to your skin.

WHAT MAKES SERUM SERUM SERUM COMPATIBLE WITH MICROCURRENT DEVICES?

SERUM SERUM SERUM is specially formulated with conductive ingredients such as glycerin, allowing a microcurrent device like BEAR™ mini to work seamlessly without any feeling on the skin.

IS SERUM SERUM SERUM CRUELTY FREE?

Yes, SERUM SERUM SERUM is cruelty free, meaning it was not tested on animals.

DOES SERUM SERUM SERUM CONTAIN ANY HORMONE DISRUPTORS?

No, our clean formula has been developed without hormone disruptors.

IS IT POSSIBLE TO RECYCLE THE SERUM SERUM SERUM BOTTLE AFTER USE?

Yes, the bottle is recyclable.

©2021 FOREO AB. ALL RIGHTS RESERVED.

IMPORTER AND DISTRIBUTOR IN EU: FOREO AB, KARLÄVAGEN 41, 114 31 STOCKHOLM, SWEDEN.

IMPORTER AND DISTRIBUTOR IN US: FOREO INC., 1525 E. PAMA LANE, LAS VEGAS, NV 89119, USA.

IMPORTER AND DISTRIBUTOR IN AUS.: SUITE 10, 1014 DONCASTER ROAD, DONCASTER EAST VICTORIA 3109, AUSTRALIA.

IMPORTER AND DISTRIBUTOR IN UK: FOREO LTD., LAWFORD HOUSE, ALBERT PLACE, N3 1QA LONDON.

MANUFACTURED FOR: FOREO AB. DESIGNED AND DEVELOPED BY: FOREO SWEDEN.

MANUFACTURED BY: VIS (SHANGHAI) TECHNOLOGY CO., LTD. NO.58 LINSHENG ROAD, TINGLIN TOWN,

JINSHAN DISTRICT, SHANGHAI, CHINA

WWW.FOREO.COM

FOREO
SWEDEN

UFO™ mini 2

SWEDISH BEAUTY-TECH
POWER MASKS



ONLINE MANUAL

FULL USER MANUAL



GETTING STARTED

Congratulations on taking the first step toward out-of-this-world skincare by acquiring UFO™ mini 2. Before you begin to enjoy all the benefits of sophisticated power mask technology in the comfort of your home, please take a few moments to carefully read the instructions in this manual.

Please READ ALL INSTRUCTIONS BEFORE USE and utilize this product only for its intended use as described in this manual.

⚠ WARNING: NO MODIFICATION OF THIS EQUIPMENT IS ALLOWED.

UFO™ mini 2 OVERVIEW

UFO™ mini 2 is a beauty device that integrates Thermo-Function and T-Sonic™ Pulsations to help UFO™ Power Activated Masks to distribute and absorb evenly all over the skin. Equipped with Full spectrum LED light Function, the combined technology in connection with the exclusively formulated and developed UFO™ Power Activated Masks, help completely rejuvenate skin, unmasking a refined, and radiant complexion. The skin care results will be various depend on the type of UFO™ Power activated mask.

GETTING TO KNOW YOUR UFO™ mini 2

UNIVERSAL POWER BUTTON

Turns device on/off, puts device in Bluetooth pairing mode, & selects treatment routines.

ULTRA-HYGIENIC SILICONE

Bacteria-resistant and super soft.

T-SONIC™ PULSATIONS

Deliver a soothing facial massage to boost skin's radiance.

CHARGING PORT

Up to 40 uses per 2.5 hour charge.

FULL-SPECTRUM LED LIGHT

Offers various skin benefits enhancing each treatment.

THERMO-FUNCTION

Softens skin to infuse mask ingredients into the deepest layers.

INDICATOR LIGHTS

Light up to indicate which mask treatment your device is set to.

ATTACHMENT RING

Secures UFO™ Power Activated Mask in place.



UFO™ POWER ACTIVATED MASK

Soft hydrocell masks exclusively formulated for use with UFO™.



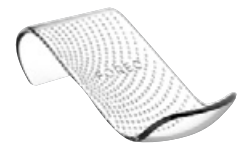
USB CHARGING CABLE

Charge anytime, anywhere with USB cable.



INTERACTIVE APP

Automatically syncs pre-programmed power mask routines to device.



SLEEK & STYLISH STAND

Protects and displays your UFO™ mini 2, while helping it dry quickly.

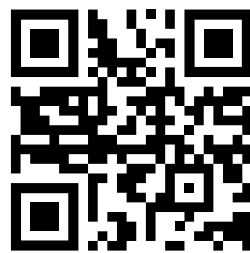
UNLOCK YOUR DEVICE

Before first use, download the FOREO For You mobile app to unlock and register your device. Follow these simple steps;

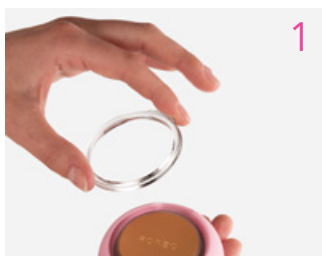
1. Download the FOREO For You app on your mobile phone
2. Log in to your account or sign up for a new one
3. Add device (on the top of your screen)
4. Choose device series
5. Press and hold the Power button to connect your device to the mobile app
6. Fill in the purchase information

And your device is ready to use!

www.foreo.com/app



HOW TO USE UFO™ POWER ACTIVATED MASKS



1 Remove the attachment ring from UFO™ mini 2.



2 Remove UFO™ Power Activated Mask from sachet.



3 Secure mask on device by clipping the attachment ring in place, with FOREO logo facing up.



4 Enjoy your power mask treatment!

Start with clean, dry skin. We recommend cleansing with LUNA™ first for best results.

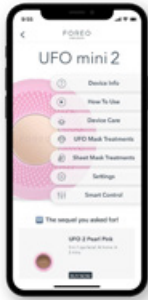
1. With a mask secured to your device, gently glide UFO™ mini 2 across your skin, distributing the mask essence evenly.
2. Using the UFO™ mini 2 device, massage the formula into your skin with a circular motion. Move the device in a clockwise circle around the face, starting on the chin, then moving up to the right cheek and the forehead. Continue down the left cheek to the chin and neck. Repeat this movement until the treatment ends.
3. Gently pat any remaining essence into your skin, or remove excess with a cotton pad. Apply a moisturizer of your choice, if desired.



FOREO SHEET MASKS

1. Gently unfold your FOREO sheet mask and place it on your face, adjusting around the eyes and mouth.
2. Using the UFO™ mini 2 device, massage the formula into your skin with a circular motion. Move the device in a clockwise circle around the face, starting on the chin, then moving up to the right cheek and the forehead. Continue down the left cheek to the chin. Repeat this movement until the treatment ends.
3. Leave the sheet mask on for another 10 minutes, or dispose of it as you prefer. Gently pat any remaining essence into your skin, or remove excess with a cotton pad. Apply a moisturizer of your choice, if desired.

FOREO FOR YOU MOBILE APP



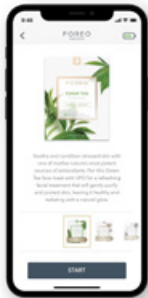
FOREO For You mobile app offers instructions on how to use and take care of your UFO™ mini 2, control settings, access guided routines, and find your device in case you've misplaced it.



TREATMENTS

Choose between 14 pre-programmed power mask treatments that correspond with each UFO mask. Treatments last for 90 seconds or 2 minutes, depending on the mask you choose. All you need to do is relax and enjoy while the App guides you through the treatment explaining the benefits of each technology.

If one UFO™ mini 2 treatment wasn't enough, press the universal power button again within 30 seconds after the end of the routine to start the same treatment over again!



SHEET MASK

Similar to the Treatments tab, choose between 5 pre-programmed treatments that correspond with each sheet mask.



SETTINGS

Save up to 8 mask treatments on your UFO™ mini 2 device for offline use!

- Make My Day and Call It a Night are pre-programmed to the first two indicator lights
- The third light is reserved for your customized treatment
- Add any other mask treatment by clicking the plus button

The routines can be accessed offline by pressing the power button. For example, if you want to access the routine you have saved on the 5th slot, press the power button 5 times (all 5 indicator lights will light up) and the pre-programmed treatment will immediately start.



CUSTOM MODE

Create your own power mask routine by selecting individual technologies according to your preferences and use it in offline mode;

- Treatment duration: 90-120-150-180 seconds
- 8 LED lights: Purple, Blue, Cyan, Green, Yellow, Orange, Red and White
- Temperature: Heat, or OFF
- T-Sonic™ pulsations: Low or High



SMART CONTROL

Try out all UFO™ mini 2 features - full spectrum LED wheel, T-Sonic™ pulsation, or warming!

CLEANING UFO™ mini 2

Always clean UFO™ mini 2 thoroughly after use. Wash the device and plastic ring with soap and then rinse with warm water. Pat dry with a lint-free cloth or towel. After use, we recommend spraying the device with FOREO's Silicone Cleaning Spray and rinsing with warm water for optimal results, then placing the device on the stand to dry.

NOTE: Never use cleaning products containing alcohol, petrol or acetone, as they may irritate the skin and damage the silicone.

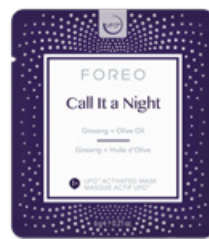
FOREO MASKS

Daily Duo COLLECTION



Make My Day

- Hydrating & Anti-Pollution
- Hyaluronic Acid + Red Algae
- Ideal for dryness and dehydration



Call It a Night

- Revitalizing & Nourishing
- Ginseng + Olive Oil
- Ideal for fine lines and dryness

Advanced COLLECTION 2.0



H2Overdose

- Ultra Hydrating
- Hyaluronic Acid + Snow Mushroom + Ceramide + Vitamin E + Vitamin B5
- Ideal for dryness and dehydration



Matte Maniac

- Extra Purifying
- Charcoal + Witch Hazel + Centella Asiatica + Snow Lotus + Chrysanthemum
- Ideal for blemishes and enlarged pores



Glow Addict

- Advanced Brightening
- Pearl Extract + Niacinamide + Vitamin E + Vitamin C + Jojoba Oil
- Ideal for dullness and loss of radiance



Youth Junkie

- Intensive Renewal
- Collagen + Peptides + Olive Oil + Shea Butter + Jojoba Oil
- Ideal for wrinkles and dryness



Shimmer Freak

- Illuminating Eye Perfector
- Caffeine + Rose Water + Niacinamide + Vitamin B5 + Cranberry Extract
- Ideal for dark circles and puffiness



Acai Berry

- Smoothing
- Shea Butter + Jojoba Seed Oil + Green Tea + Tripeptide + Gotu Kola
- Ideal for diminished elasticity and dull skin



Bulgarian Rose

- Hydrating
- Jojoba Seed Oil + Hyaluronic Acid + Vitamin E + Olive Oil + Silk Amino Acids
- Ideal for dehydration and dullness



Manuka Honey

- Revitalizing
- Allantoin + Betaine + 17 Amino Acids + Panthenol
- Ideal for dryness and aging skin



Green Tea

- Purifying
- Ulmus Extract + Evening Primrose Oil + Pine Needles Extract + Kudzu Root
- Ideal for oiliness and blemishes



Cannabis Seed Oil

- Calming
- Chamomile + Vitamin C + Vitamin E + Allantoin
- Ideal for acne, redness, and sensitive skin



Coconut Oil

- Nourishing
- Baobab Seed Oil + Jojoba Seed Oil + Sweet Almond Oil + Olive Oil + Shea Butter + Squalane + Ceramides + Rosehip Oil
- Ideal for dryness and dehydration

IMPORTANT FOR OPTIMUM SAFETY:

Your UFO™ mini 2 device is intended to be used in conjunction with UFO™ Power Activated Masks or FOREO masks only. At no time should the device be placed directly onto the skin/face with power on.

- If you have a skin condition or any medical concerns, please consult a dermatologist before use.
- Using UFO™ mini 2 should be comfortable – if you experience discomfort, discontinue use immediately and consult a physician.
- Exercise particular care when using UFO™ mini 2 around the under-eye regions and do not bring the device into contact with the eyelids or eyes themselves.
- For reasons of hygiene, we do not recommend sharing your UFO™ mini 2 with anyone else.
- Avoid leaving your UFO™ mini 2 in direct sunlight, and never expose it to extreme heat or boiling water.
- UFO™ mini 2 has a heated surface. Those sensitive to heat must use caution and care when using this device.
- Close supervision is necessary when this device is used by, on, or near children, as well as those with reduced physical and mental abilities.
- Discontinue use if this product appears damaged in any way. This product contains no serviceable parts.
- Use this device only for its intended use as described in this manual. If you do not find the answer to your specific question, or if you have any other questions regarding the device's operation, please visit www.foreo.com

TROUBLESHOOTING

Precautions to be taken in the event of changes in the performance of UFO™ mini 2.

If UFO™ mini 2 is not activated when pressing the universal power button:

- Battery is empty. Charge your UFO™ mini 2 via USB charging cable until the light emits a steady glow. A full 2.5 hour charge will last up to 40 treatments.

If UFO™ mini 2 cannot be switched off and/or interface buttons do not respond:

- Microprocessor is temporarily malfunctioning. Press and hold universal power button to restart the device.

If UFO™ mini 2 won't sync to the FOREO For You app:

- Ensure that your device is fully charged and that your Bluetooth is turned on.
- Switch your Bluetooth off and then on again to try reconnecting.
- Close the FOREO app and then reopen it to start the process over.
- Delete and reinstall the application - perhaps the application simply needs to be updated.
- After deleting and reinstalling the application, make sure to restart your phone.
- Delete your phone's cookies and cache memory
- Ensure that your mobile's operating system has been updated to the latest version.

WARRANTY TERMS & CONDITIONS

REGISTER WARRANTY

To activate your 2-Year Limited Warranty, register by downloading the FOREO For You app and following the instructions provided.

2-YEAR LIMITED WARRANTY

FOREO warrants this device for a period of TWO (2) YEARS (except in countries where national law requires longer minimum guarantee) after the original date of purchase against defects due to faulty workmanship or materials arising from Normal Use of the device. The warranty covers working parts that affect the function of the device. It does NOT cover cosmetic deterioration caused by fair wear and tear, or damage caused by accident, misuse or neglect. Any attempt to open or take apart the device (or its accessories) will void the warranty.

If you discover a defect and notify FOREO during the warranty period, FOREO will, at its discretion, replace the device free of charge. Claims under warranty must be supported by reasonable evidence that the date of the claim is within the warranty period. To validate your warranty, please keep your original purchase receipt together with these warranty conditions for the duration of the warranty period.

To claim your warranty, you must log in to your account at www.foreo.com and then select the option to make a warranty claim. Shipping costs are nonrefundable. This undertaking is in addition to your statutory rights as a consumer and does not affect those rights in any way.

DISPOSAL INFORMATION

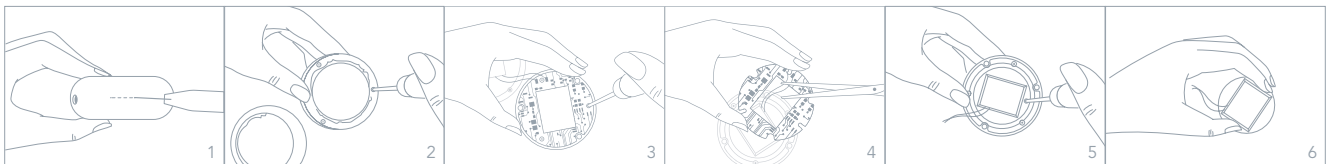
Disposal of old electronic equipment (applicable in the EU and other European countries with separate waste collection systems).



The crossed-out dustbin symbol indicates that this device should not be treated as household waste, but rather be brought to the appropriate collection point for recycling of electrical and electronic equipment. By ensuring this device is disposed of correctly, you will help prevent the potential negative consequences for the environment and human health which could be caused by inappropriate waste handling of the product. The recycling of materials will also help conserve natural resources.

For more information about the recycling of your device, please contact your local household waste disposal service or your place of purchase.

BATTERY REMOVAL



SPECIFICATIONS

MATERIALS:	Body-safe silicone, PC + ABS, Aluminium Alloy	TEMPERATURE:	45 Degrees Celsius
COLOR:	Pearl Pink/Mint/Fuchsia	USAGE:	Up to 40 uses per charge
SIZE:	72.5 mm x 31.4 mm	STANDBY:	180 days
WEIGHT:	99g	FREQUENCY:	180 Hz
BATTERY:	Li-Ion 1050mAh 3.7V	MAX NOISE LEVEL:	<50 dB
		INTERFACE:	1-button

DISCLAIMER: Users of this device do so at their own risk. Neither FOREO nor its retailers assume any responsibility or liability for any injuries or damages, physical or otherwise, resulting directly or indirectly from the use of this device. Furthermore, FOREO reserves the right to revise this publication and to make changes from time to time in the contents thereof without obligation to notify any person of such revision or changes.

CAUTION: Changes or modifications to this unit not expressly approved by the party responsible for compliance could void the user's authority to operate the equipment.

NOTE: This equipment has been tested and found to comply with the limits for a Class B digital device, pursuant to part 15 of the FCC Rules. These limits are designed to provide reasonable protection against harmful interference in a residential installation. This equipment generates uses and can radiate radio frequency energy and, if not installed and used in accordance with the instructions, may cause harmful interference to radio communications. However, there is no guarantee that interference will not occur in a particular installation. If this equipment does cause harmful interference to radio or television reception, which can be determined by turning the equipment off and on, the user is encouraged to try to correct the interference by one or more of the following measures:

- Reorient or relocate the receiving antenna.
- Increase the separation between the equipment and receiver.
- Connect the equipment into an outlet on a circuit different from that to which the receiver is connected.
- Consult the dealer or an experienced radio / TV technician for help.

Model may be changed for improvements without notice.

FAQs

UFO™ mini 2 BASICS

1. WHAT SHOULD I DO AFTER I RECEIVE MY UFO™ mini 2 DEVICE?

Congratulations on discovering smarter skincare! First things first - download the FOREO For You app for free, to unlock and register your device. (For more information, please refer to the section below titled 'THE APP').

2. HOW DO I START MY FIRST TREATMENT?

First, clean and dry your face and neck carefully - we recommend cleaning with LUNA™ first for best results. Then attach a UFO™ Power Activated Mask to your UFO™ mini 2 device, or place a sheet mask on your face. Finally, activate your UFO™ mini 2 mask routine via the app, and follow the step-by-step instructions available. For more information, please refer to the How To Use guide above.

3. HOW DO I TURN MY UFO™ mini 2 DEVICE ON / OFF?

Press the universal power button on your UFO™ mini 2 device to turn it on. To turn your device off, press and hold the universal power button for 3 seconds. After completing a pre-programmed mask routine, the device will turn off automatically.

4. WHAT COMES WITH MY UFO™ mini 2?

1 UFO™ mini 2, 1 USB Charging Cable, 1 User Manual, 1 Quick Start Guide & 1 Stand.

THE UFO™ mini 2 DEVICE

5. HOW OFTEN CAN I USE MY UFO™ mini 2 DEVICE?

UFO™ mini 2 power mask treatments have been developed for twice-a-day use, morning and evening. However, depending on your skin's needs and your personal preferences, you can use it more or less.

6. HOW LONG DOES EACH TREATMENT TAKE?

Treatments last 90 seconds or 2 minutes depending on the mask you choose.

7. IS EACH UFO™ mini 2 TREATMENT THE SAME?

No. Each FOREO Mask pairs with a unique treatment routine for optimal results.

8. IS MY UFO™ mini 2 DEVICE SAFE TO USE ON SENSITIVE SKIN?

UFO™ mini 2 devices are safe to use and suitable for all skin types. Furthermore, depending on your skin's specific needs, you can choose from a range of different FOREO Masks that cater to different skincare desires.

9. CAN I USE MY UFO™ mini 2 DEVICE AROUND THE EYE AREA?

Yes, UFO™ mini 2 devices are safe to be used under the eyes. We recommend gently gliding the device around the eye area, being careful to apply minimal pressure.

10. CAN I USE MY UFO™ mini 2 DEVICE AFTER HAVING PLASTIC SURGERY, BOTOX OR DERMAL FILLERS?

UFO™ mini 2 devices offer a gentle facial treatment, suitable for all skin types. However, you should consult your doctor before use if you have had any recent medical procedures.

11. CAN I USE MY FOREO LUNA™ WITH MY UFO™ mini 2?

Yes! UFO™ mini 2 & LUNA™ work better together - the LUNA™ facial cleansing brush gently exfoliates dead skin cells, unclogs pores and removes up to 99.5% of dirt and oil, giving you the perfect canvas for a UFO™ mini 2 power mask treatment.

12. WHAT IS THE DIFFERENCE BETWEEN UFO™ 2 AND UFO™ mini 2?

Both UFO™ 2 and UFO™ mini 2 offer a sophisticated power mask treatment for you to enjoy in only 90 seconds. However, UFO™ 2 has an additional Cryo-Therapy feature, which instantly cools to shrink the appearance of pores and provide a firmer looking complexion.

13. WHAT IS THE DIFFERENCE BETWEEN UFO™ mini AND UFO™ mini 2?

Unlike UFO™ mini, UFO™ mini 2 has been re-engineered with ultra-fast Thermo-Therapy and full spectrum LED lights (8 in total), that offer a more efficient and effective masking experience than ever before!

THE APP

14. WHY DO I NEED TO DOWNLOAD THE FOREO APP BEFORE USING MY UFO™ mini 2 DEVICE?

All app-enabled FOREO products need to be activated and unlocked via the FOREO For You app the first time they are turned on. This helps protect against fake/copied FOREO products, and makes it easier to register the warranty and protect your investment.

15. HOW DO I PAIR MY UFO™ mini 2 DEVICE WITH THE FOREO APP?

Download the FOREO For You app to your smartphone or tablet and turn on Bluetooth. Press the universal button on your device once to turn on. A blinking white light indicates your device is in pairing mode. Follow the instructions in the app to register and pair your UFO™ mini 2 device.

16. DOES MY UFO™ mini 2 DEVICE WORK WITHOUT THE APP?

Yes, you can manually access 8 routines you have saved on your device. Press the universal power button to turn on and activate the Make My Day treatment routine. Press again to activate the Call It a Night treatment, and so on with each mask. Your power mask treatment is ready to begin!

17. CAN I CUSTOMIZE MY POWER MASK TREATMENT ROUTINE?

Yes. While each UFO™ Power Activated Mask comes with a recommended pre-programmed treatment routine, you can personalize your power mask experience by creating your own treatment routine via the FOREO For You app. On the app, you are able to choose your preferred LED light and T-Sonic™ pulsation level, and select whether you wish your personalized routine to include Thermo-Therapy or not.

TROUBLESHOOTING & MAINTENANCE

18. WHAT DOES IT MEAN WHEN MY UFO™ mini 2 DEVICE IS CONTINUOUSLY BLINKING?

A blinking light around device indicates that your UFO™ mini 2 device is in Bluetooth pairing mode or that the device needs to be charged. Follow the instructions in the app to sync your device.

19. HOW DO I CHARGE MY UFO™ mini 2 DEVICE?

UFO™ mini 2 devices are USB-rechargeable, with a two and half hour charge delivering up to 40 uses.

20. HOW DO I CLEAN MY UFO™ mini 2 DEVICE?

Wash the device and plastic ring with soap and then rinse with warm water. Pat dry with a lint-free cloth or towel. After use, we recommend spraying the device with FOREO's Silicone Cleaning Spray and rinsing with warm water for optimal results, then placing the device on the stand to dry. Never use cleaning products containing alcohol, petrol or acetone, as they may irritate the skin and damage the silicone.

FOREO MASKS

21. CAN I REUSE FOREO MASKS?

Each UFO™ Power Activated Mask and FOREO Sheet Mask is intended for single-use only. However, if one UFO™ mini 2 treatment wasn't enough, press the universal button again within 30 seconds after the end of the routine to start the same treatment over again!

22. DO I NEED TO WASH THE MASK ESSENCE OFF AFTER USING MY UFO™ mini 2 DEVICE?

No, Hyper-Infusion Technology is specifically engineered to help mask essence absorb deeper into the skin, faster. After the treatment, simply massage any remaining essence into your skin, or remove excess with a cotton pad.

©2022 FOREO AB. ALL RIGHTS RESERVED.

EU DISTR.: FOREO AB, KARLAVÄGEN 41, 114 31 STOCKHOLM, SWEDEN.

US DISTR.: FOREO INC., 1525 E PAMA LANE, LAS VEGAS, NV 89119, USA.

AUS DISTR.: 6 PROHASKY STREET, PORT MELBOURNE, VIC, 3207 AUSTRALIA.

DESIGNED AND DEVELOPED BY FOREO SWEDEN.

MANUFACTURED FOR FOREO AB.

WWW.FOREO.COM