

b.



EVII™

QUICK START GUIDE



We're excited
you've chosen
Evii™ and we truly
hope you'll like
your time
together.

Before you take a bite of Evii™, read this manual to
learn how to use Evii™ and experience toe curling
bliss.

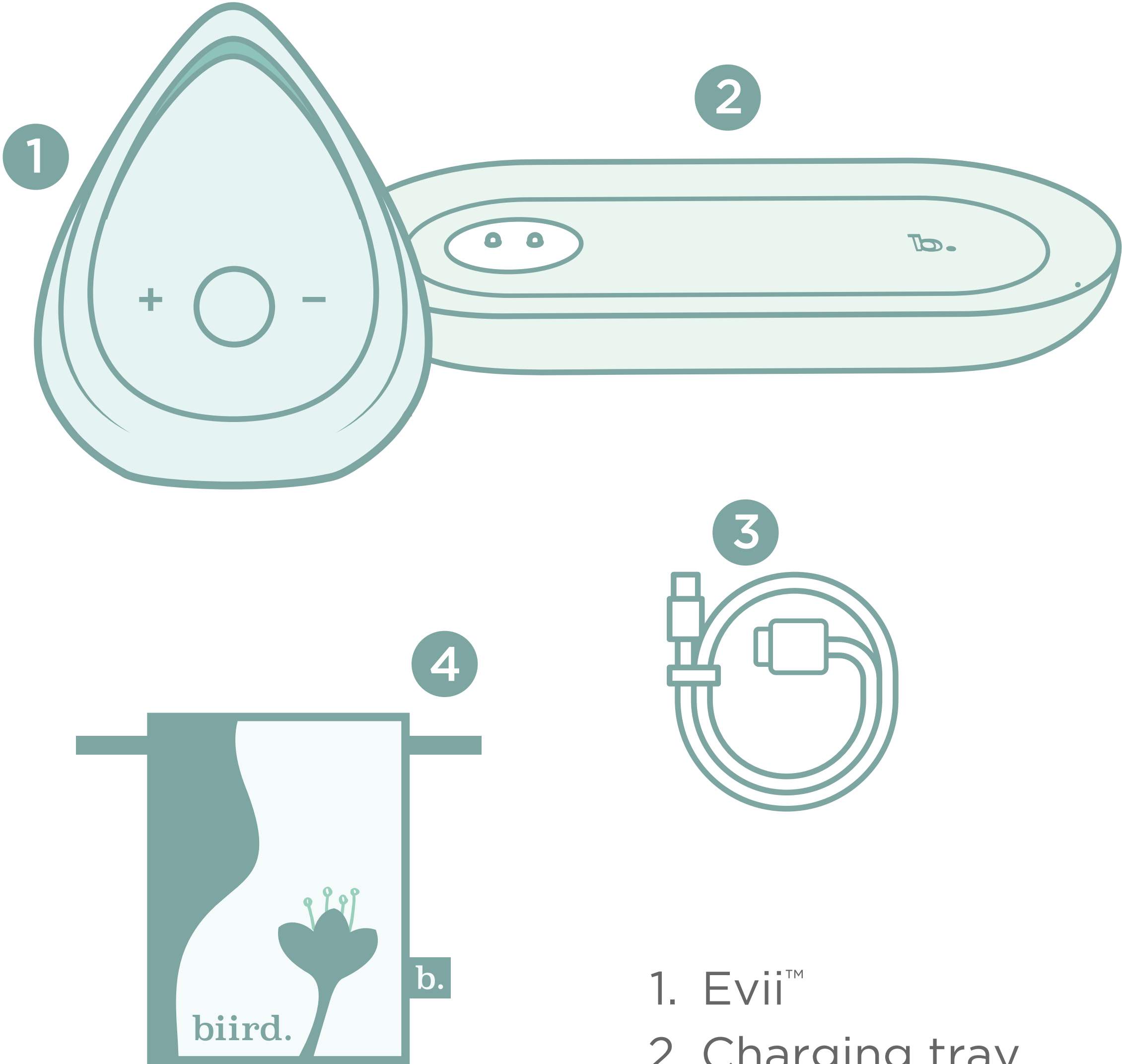
If you ever have any questions or feedback, don't
hesitate to message us at hello@biird.co

Have fun!

Chiirp.

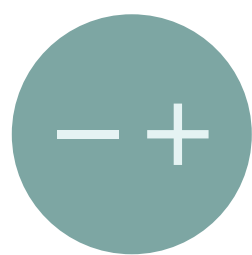
♥ The Biird Team

UNBOXING

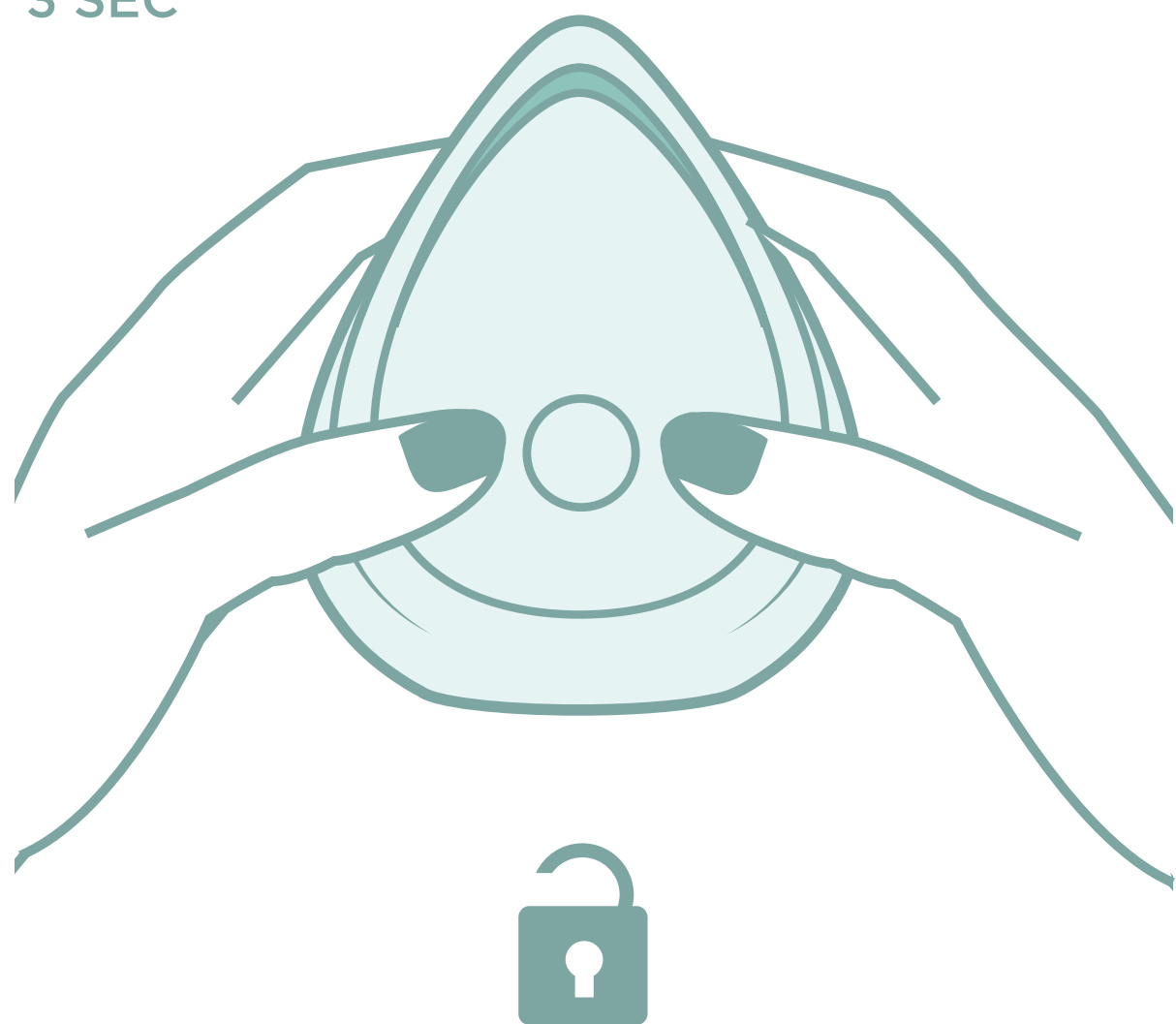


- 1. Evii™
- 2. Charging tray
- 3. Cable
- 4. Pouch

INSTRUCTIONS AND USAGE



3 SEC



1. Travel Lock

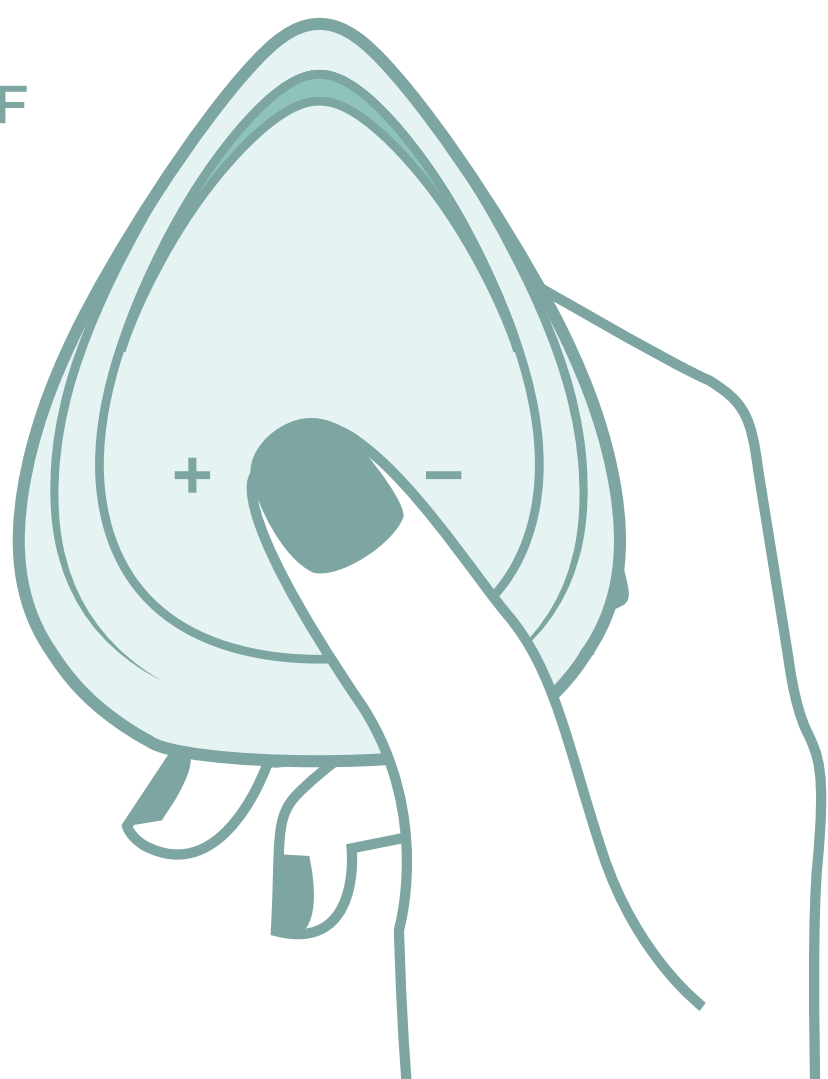
Your Evii™ comes locked. Press and hold both + and - buttons for 4 seconds until the white LED light blinks. Your Evii™ is now unlocked.

If you need to lock your Evi™ again when you're traveling, simply hold the + & - buttons again until the red LED blinks.

Placing Evii™ on its charging base will automatically unlock it.



ON / OFF



2. Using your Evii™

To turn Evii™ On, press and hold the central button for 3 seconds. Navigate through the modes by pressing the central button.

To turn Evii™ Off, press and hold the central button for 3 seconds.

INSTRUCTIONS AND USAGE

3. FLOWSENSE™ technology

Our patented **FLOWSENSE™** technology allows you to experience new vibration settings through a combination of one or both vibration elements.

The first 3 set intensities of Evii™ activate the top vibration element. The next 3 intensities activate both the top and the bottom vibration element.

Press & hold + or - to gently increase the vibration intensity. Release when you've reached the perfect intensity.

Take advantage of the ribbed surface of Evii™ to explore new sensations throughout your whole body.

8 MODES

1.

2.

3.

4.

5.

6.

7.

8.

CREASED TIP FOR
PIN-POINT CLITORAL
STIMULATION

SQUISHY & RIBBED
BODY FOR BLENDED
SENSATIONS

CLICK & HOLD

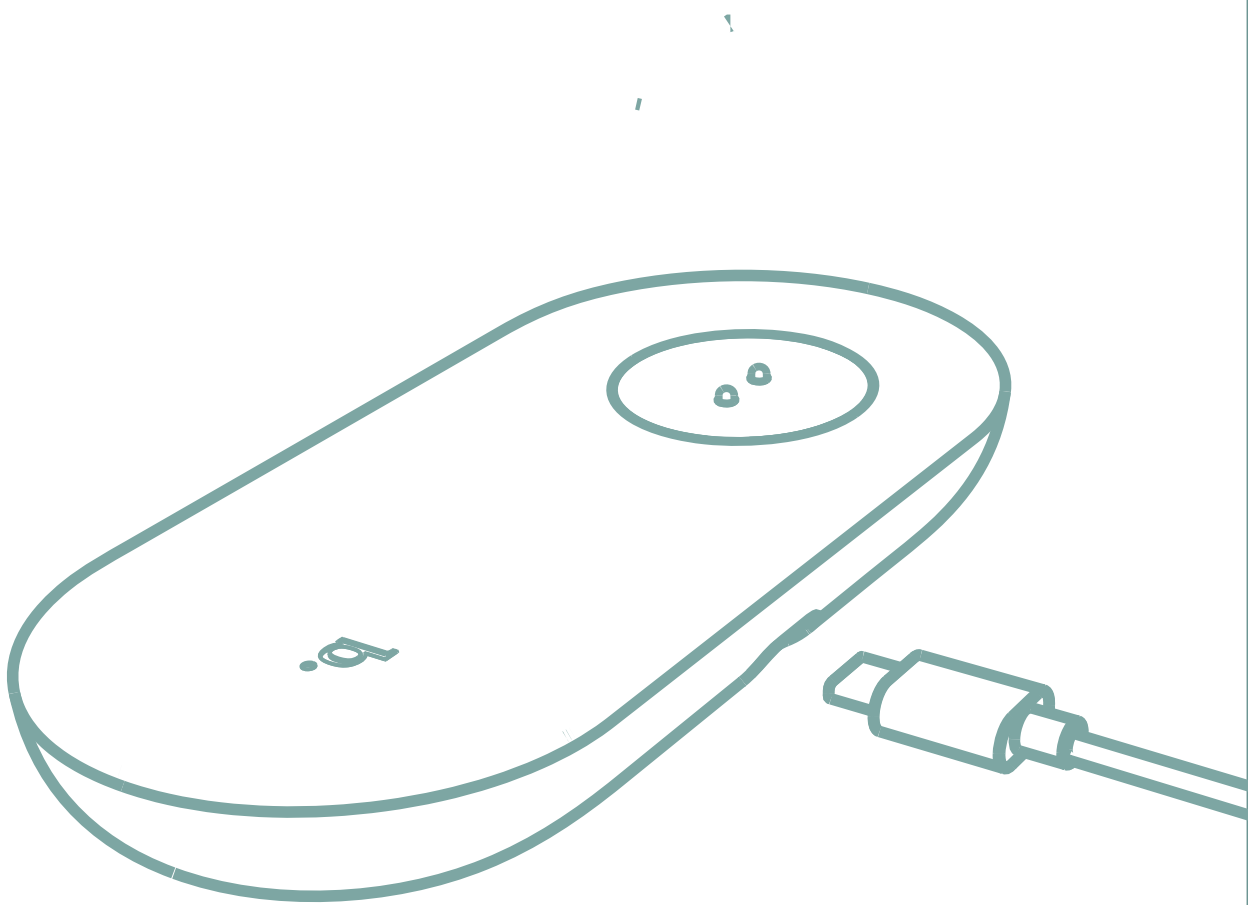
FLOWSENSE™

CHARGING

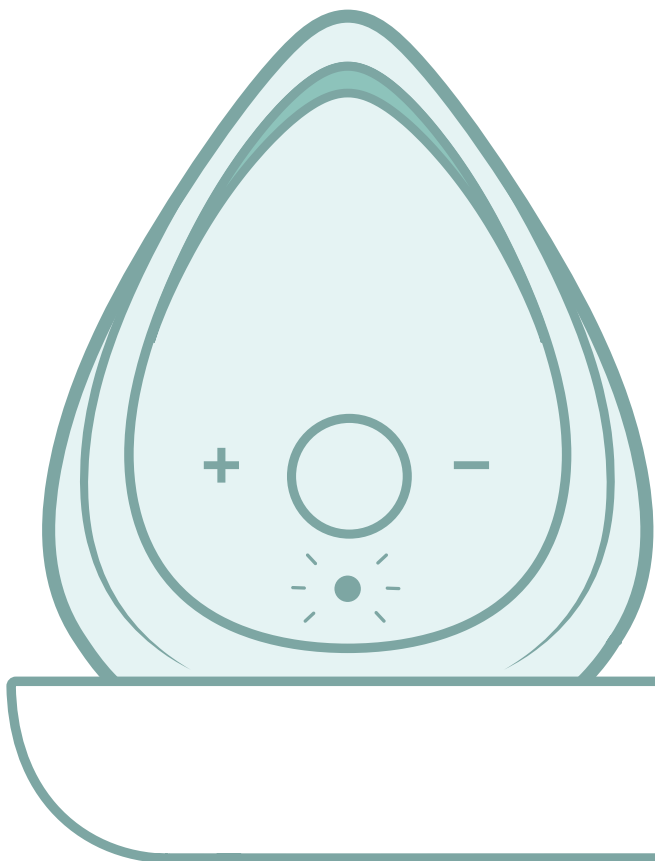
4. Charge your Evii™

Charge your Evii™ before first use. Before every charge, make sure your Evii™ is free from water or lubricant residue.

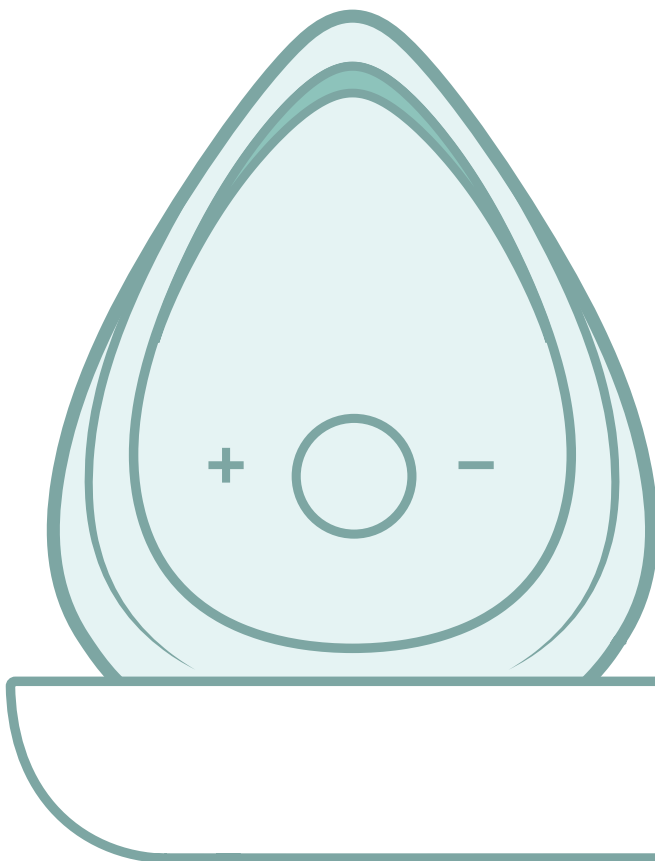
Plug the USB cable to the charging tray and place your Evii™ on the charging tray. The white LED light will blink while charging. When fully charged, the light will turn off.



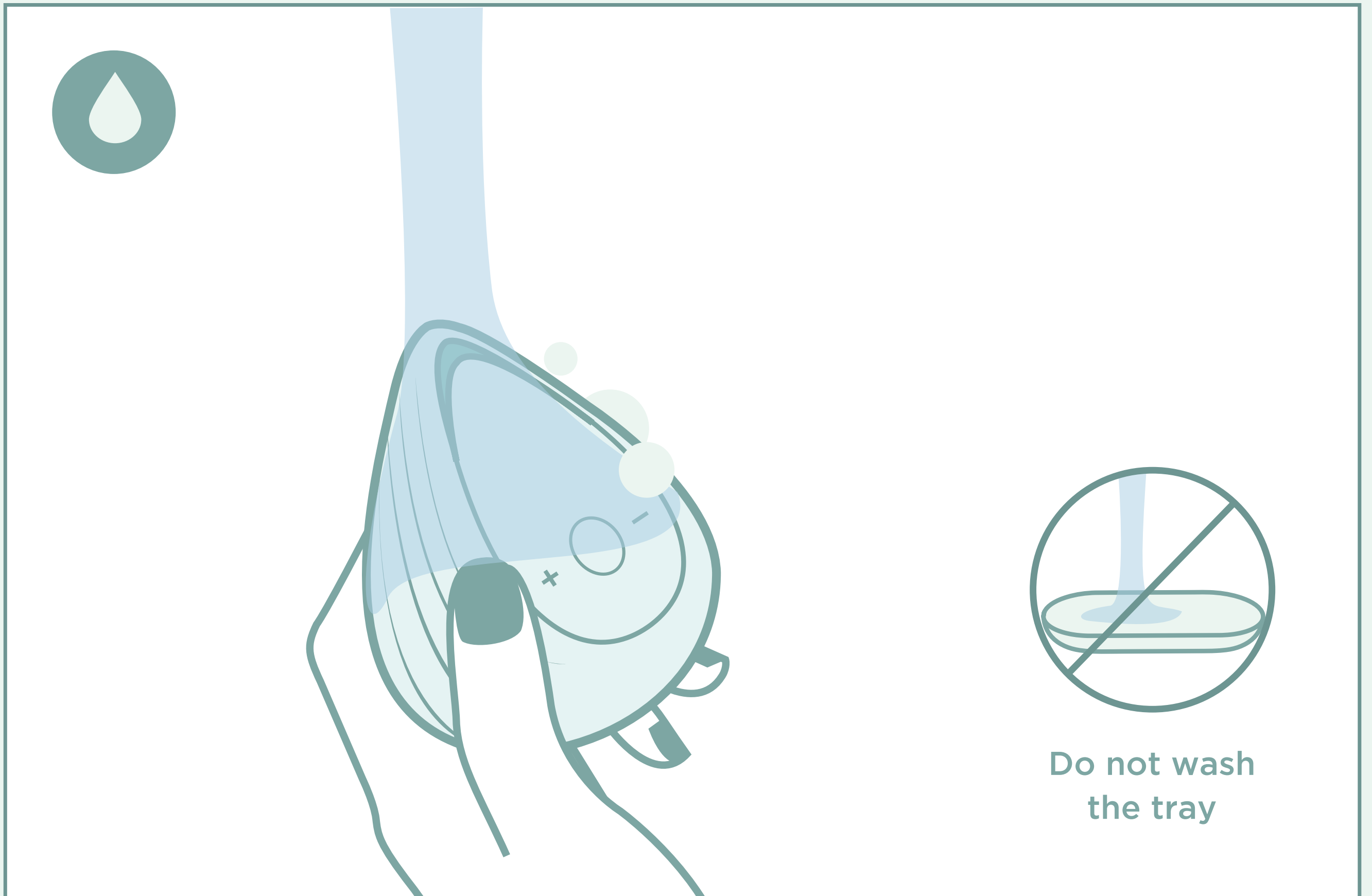
BLINKING



OFF



DOS & DONTS



Cleaning, storage and safety

Always clean your Evii™ before and after each use. Use warm water and antibacterial soap, rinse with clean hot water and pat dry with a lint-free cloth or a towel. For your safety and to not damage the silicone, never use aggressive cleaning products containing alcohol, acetone or oily substances such as petrol.

DO NOT WET OR SUBMERGE THE CHARGING TRAY.

DOS & DONTS



External
use only



Use water
based lubricants



Keep away
from heat/ fire

- Evii™ has been designed for external stimulation. Do not insert Evii™ in any body cavity.
- We recommend the use of water-based lubricants for an improved experience. Do not use silicone-based lubricant as these will damage the silicone.
- Never use massage oils or hand cream as lubricants for the intimate areas. Do not use your Evii™ on swollen or damaged skin. In case of doubt, always contact a medical professional first.
- Protect your Evii™ from direct sunlight and do not expose it to extreme heat.
- If your Evii™ appears to function abnormally, or if you experience any other problems with your Evii™ - or if you just want to say hi- please contact our Customer Care by sending a message to **hello@biird.co**

IMPORTANT: For adult use only. Keep your personal massager out of the reach of children. Those who may be pregnant, have a pacemaker, diabetes, phlebitis or thrombosis should consult with a medical professional regarding the risk of blood clots before using any intimate massager.

SPECIFICATIONS

DIMENSIONS & WEIGHT

- **Size:** 73mm(H) x 59.6mm(D) x 60.6mm(W) / 2.87 x 2.35 x 2.39 in
- **Charging Tray Size:** 19.2mm(H) x 70.6mm(D) x 150.2mm(W) / 0.76 x 2.78 x 5.91 in
- **Weight:** 108.5g / 0.24 lbs

BATTERY & CHARGING

- **Battery:** 500mAh
- **Use Time:** Up to 2.5 Hours
- **Charging time:** 2 hours

MATERIALS & INTERFACE

- **Materials:** High Quality, Ultra Soft Silicone & ABS
- **Interface:** 3 button interface +, -, and mode switch/on/off, 8 vibration modes with various intensities that can be finetuned.
- **IP7X Water Resistant:** Evii™ can be submerged and used in the bathtub.
- **Noise Level:** <50dB

DISPOSAL INFORMATION

Disposal of old electronic equipment (applicable in the EU and other European countries with separate waste collection systems). The crossed-out dustbin symbol indicates that this product should not be treated as household waste, but rather be brought to the appropriate collection point for recycling of electrical and electronic equipment.

If you have any further questions or concerns and wish to find out more information about biird products, please contact us at **hello@biird.co**

Disclaimer: Users of Biird product do so at their own risk. Neither Biird nor its retailers assume any responsibility or liability for the use of this product. Further, Biird reserves the right to revise this publication and to make changes from time to time in the contents here without obligation to notify any person of such revision or changes. Applicable for ALL products. Model may be changed for improvements without notice.

WARRANTY INFORMATION

1-YEAR WARRANTY (2 Year warranty where applicable) Biird warrants this pleasure object for a period of ONE (1) YEAR, after the date of original purchase, against defects due to faulty workmanship or materials. The warranty covers working parts that affect the function of the pleasure object. It does NOT cover cosmetic deterioration caused by fair wear and tear or damage caused by accident, misuse or neglect. Any attempt to open or take apart the pleasure object (or its accessories) will void the warranty. If you discover a defect and notify Biird during the warranty period, Biird will, at its discretion, replace the pleasure object free of charge. Claims under warranty must be supported by reasonable evidence that the date of claim is within the warranty period. To validate your warranty, please keep your original purchase receipt together with these warranty conditions for the duration of the warranty period. To claim your warranty, you must contact Biird Customer Care at **hello@biird.co** Shipping costs are non-refundable. This undertaking is in addition to consumer's statutory rights and does not affect those rights in any way.

© 2022 Biird. All rights reserved.

Designed by Biird with ♥ in the Netherlands.

Made in China.