

KALLOS COSMETICS

COLOR ACADEMY

Hair Coloring from Basics
to Creative Techniques



CONTENTS

01

Structure of Skin and Hair

Structure of the Skin	4
Hair	5
What is pH?	7
Structure of the Hair	8
Natural Base Pigmentation	10

02

Color, Create, Be Creative, Kallos Cosmetics Hair Colors

Permanent Hair Coloring	13
KJMN Professional Cream Hair Color	14
Production & quality	15
Kallos KJMN Color Swatches	17
The Coloring Process	19
Colorimetry	20
Determining Hair Color	21
Pigments in Hair Colors	23
Cool, Natural and Warm Shades	24
Hair Diagnosis	25
Color Numbering System	28
Kallos KJMN Hydrogen Peroxide Emulsion	29

03

Hair Coloring with Examples

Brown Hair Coloring	32
Darker Hair Coloring	34
Blonde Hair Coloring	36
Blonde Hair Coloring with High-Lift Colors	38
Red Hair Coloring	40
Using Mixtones	42
Gray Hair Coloring	44
Men's Hair Coloring	48

04

Technique of Hair Bleaching

Decolorization, Color Removal and Lightening	51
Technology of Bleaching and Color Stripping	52
Full Bleaching	53
Types of Bleaching	55

05

Repigmentation

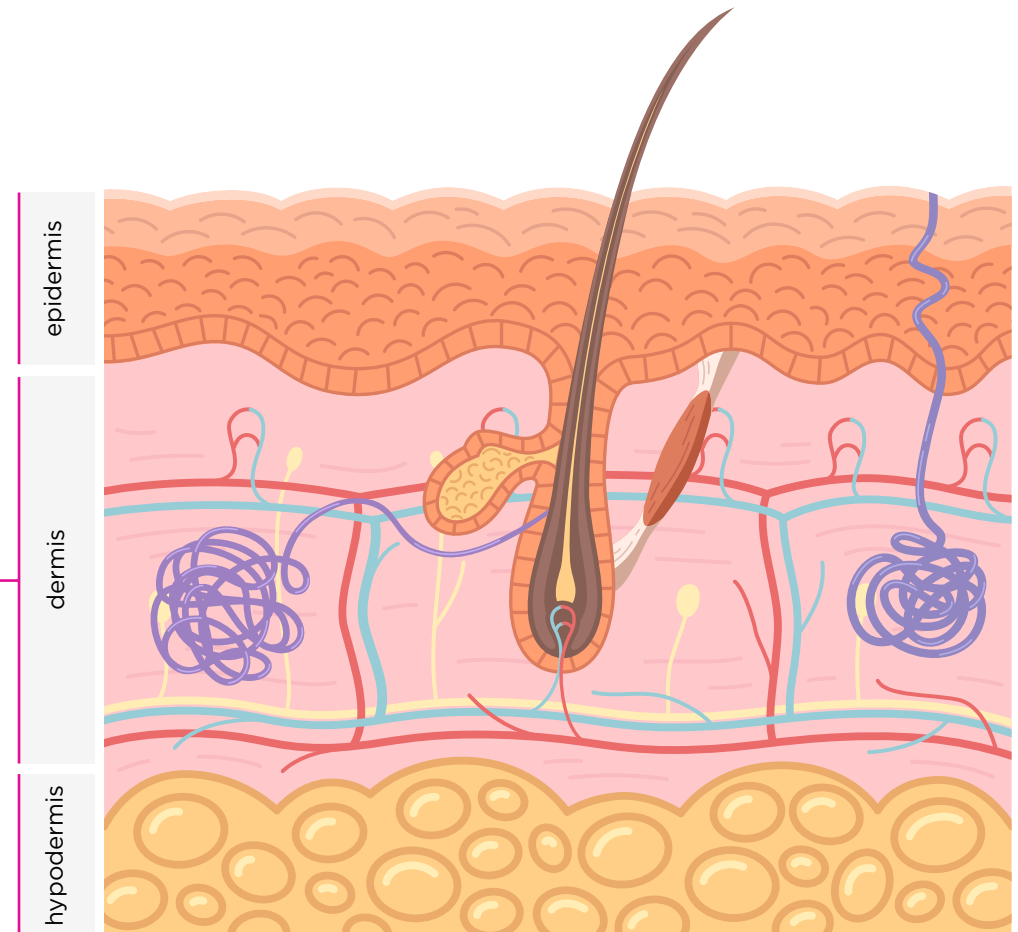
Lightening Chart	60
Repigmentation	62

01 | STRUCTURE OF SKIN AND HAIR

Structure of Skin

The human skin is the most important organ in contact with the external world and the environment. It is a flexible and strong covering layer that envelops the entire body and protects it from injuries and diseases caused by infections. The skin of an average-sized person covers approximately 1.7 m² and weighs about 4.1 kg.

THE 3 LAYERS OF THE SKIN



Hair

Hair is one of the appendages of the skin and can be found on almost every surface of the human body. Depending on its location on the body, hair shows significant differences in length and thickness.

During individual development, hair appears in **three forms**:

1. LANUGO FETALIS

Develops from the 3rd month of fetal life, reaches its peak around the 5th month, and falls out during the last month of pregnancy.

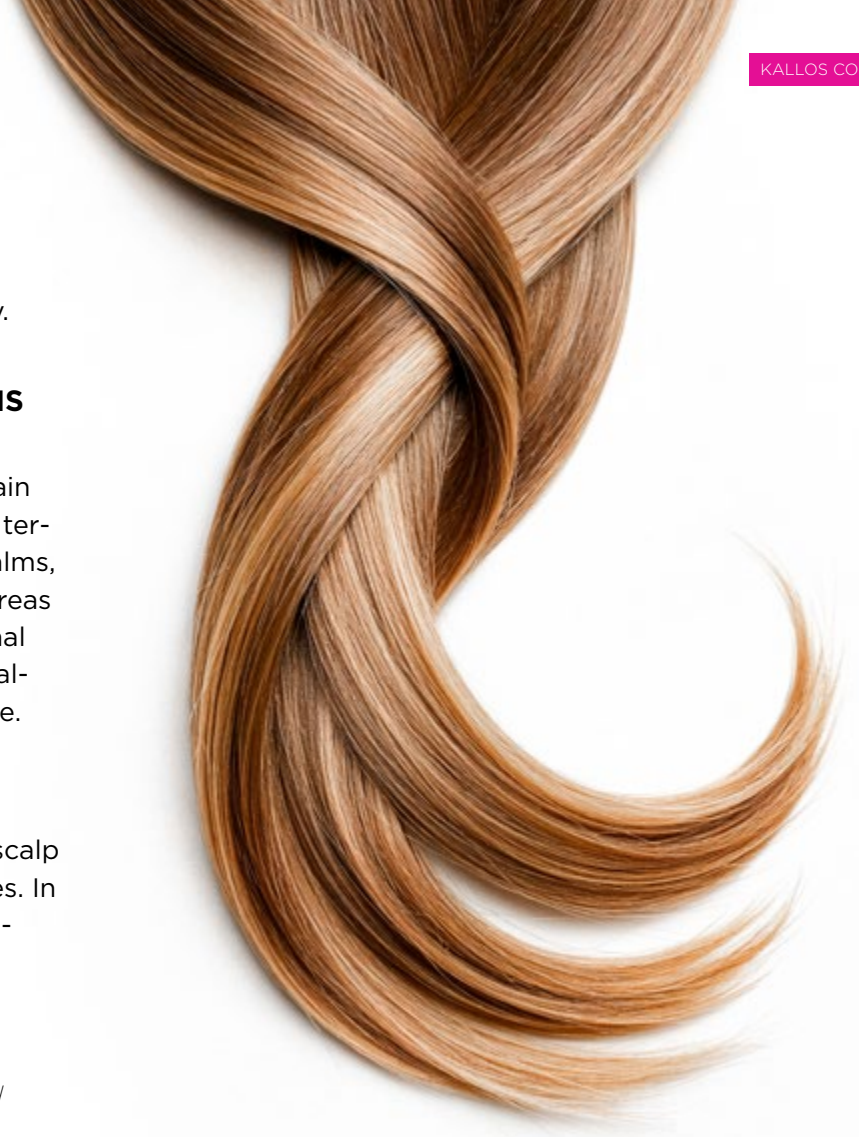
2. LANUGO POSTNATALIS

Fine, soft hair (lanugo) that develops after birth. In certain areas, it is later replaced by terminal hair. Except for the palms, soles, finger surfaces, and areas already covered with terminal hair, it can be found across almost the entire body surface.

3. TERMINAL HAIR

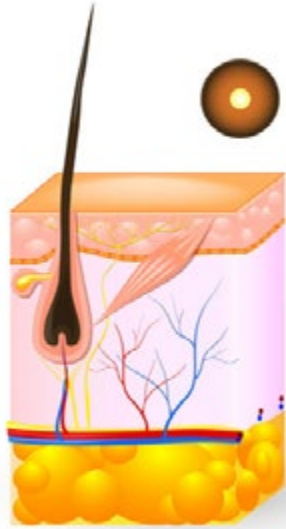
Already present at birth as scalp hair, eyebrows, and eyelashes. In other areas, terminal hair appears later in life, such as:

- *pubic hair, underarm hair*
- *beard, mustache*
- *hair inside the nostrils and ear canals*



The hair located on the scalp is called hair.

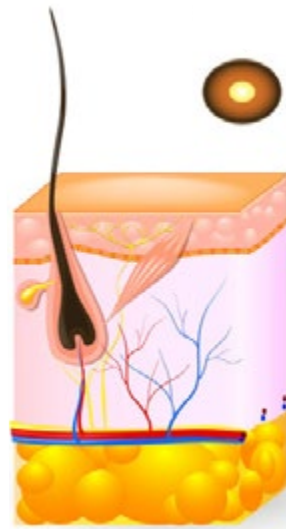
Based on its shape, hair can be classified as follows:



01

LISSOTRICH HAIR

(with a round cross-section) is characteristic of Asian and Indigenous Indian populations. It is completely straight and smooth.



02

CYMATRICH HAIR

(with an oval cross-section) is characteristic of the Indo-European population. It is smooth and naturally wavy.



03

ULOTRICH HAIR

(with a flat cross-section) is characteristic of the Black population. It is curly with a tight spiral structure, which makes it difficult to comb.

| What is pH?

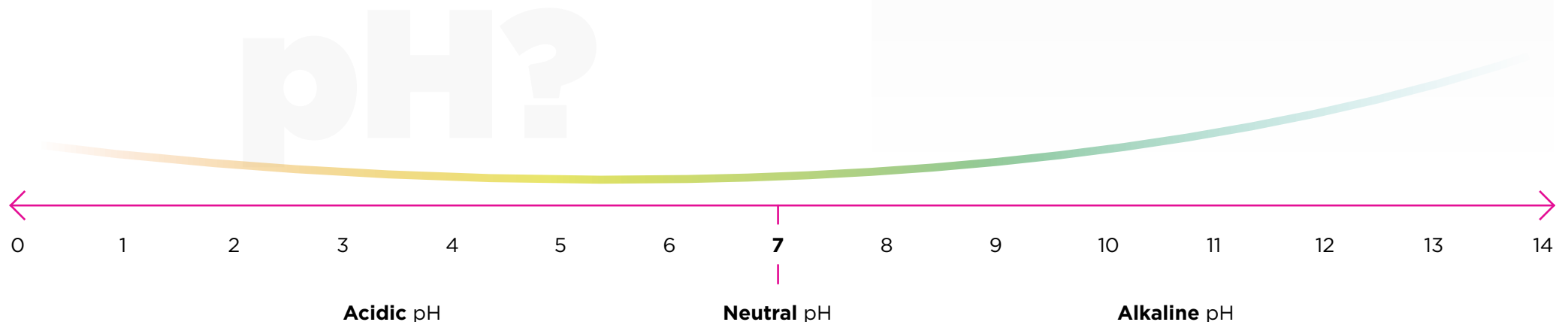
The pH is a scale that indicates how acidic or alkaline (also called basic) a given substance is.

The letters come from the term “potentia hydrogenii” or “power of Hydrogen”, which means “the strength of hydrogen.”

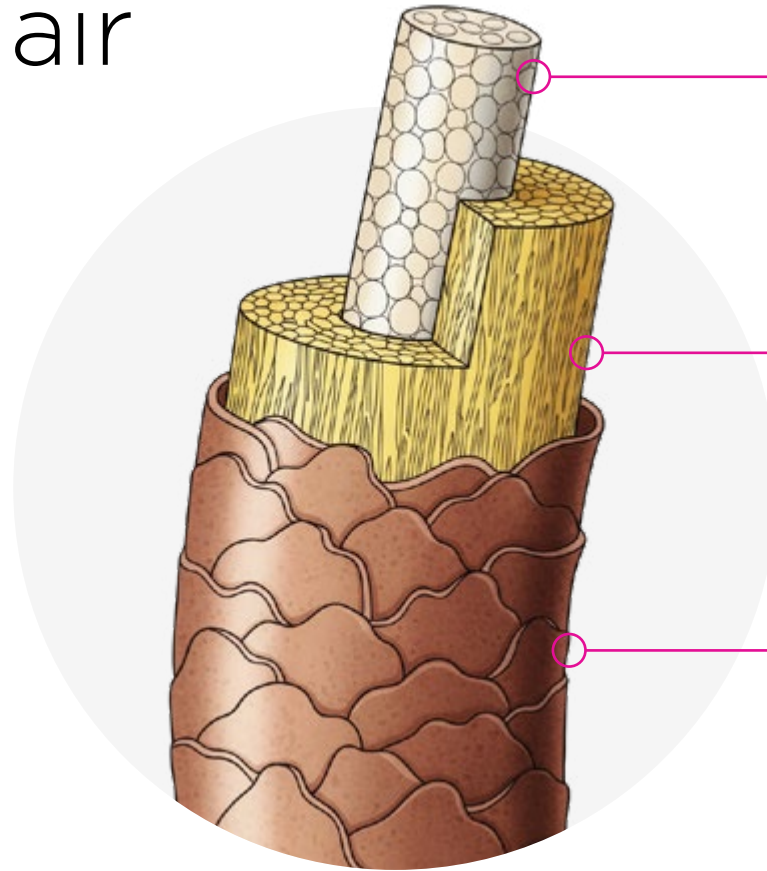
From 0 to 6.9 a substance is considered acidic. The lower the value, the more acidic it is. Acidic action generally has a constricting effect, which, for example, helps restore the surface of the hair strand after alkaline structural treatments.

A value of exactly 7 represents a neutral pH, which is considered the ideal state.

From 7.1 to 14 a substance is considered alkaline (basic). Alkaline substances open the protective cuticle of the hair, allowing chemical agents to penetrate the cortex and alter the hair’s structure. The higher the value, the more alkaline it is.



Structure of the Hair



Medulla

The medulla consists of a column of loosely arranged, round or disc-shaped cells.

Cortex

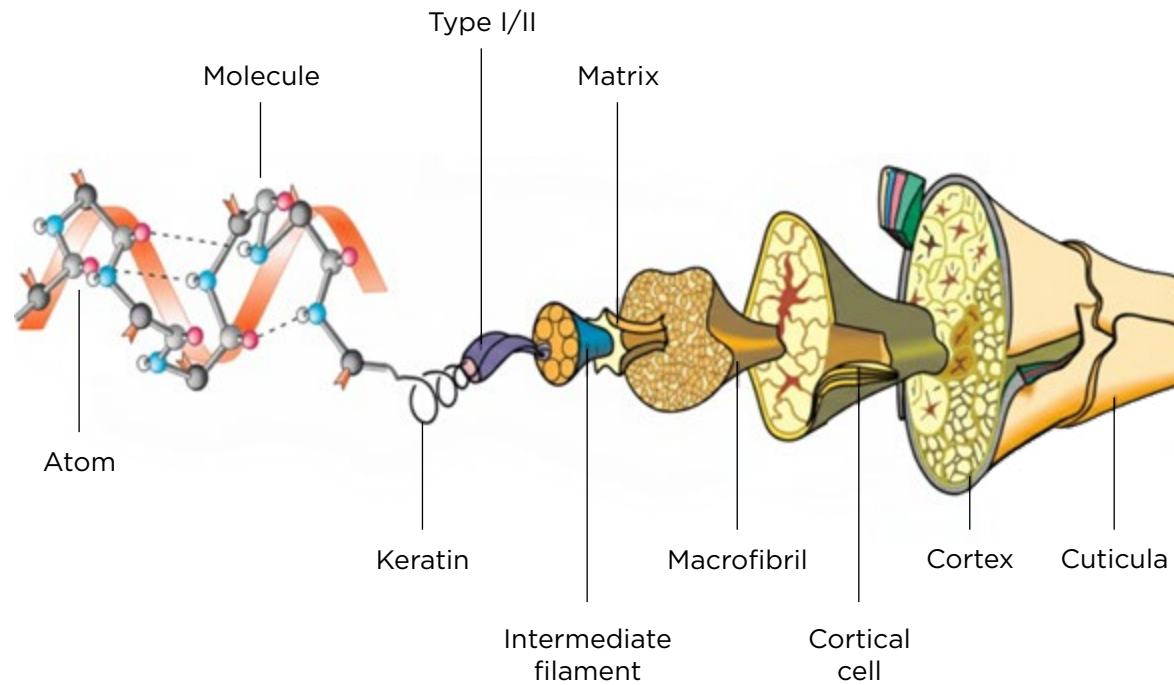
The cortex makes up 75–80% of the hair shaft. It is composed of keratin filaments that are arranged in a regular, organized structure.

Cuticle

The cuticle forms the surface of the hair shaft. It is created by cells from the inner root sheath that migrate outward and undergo keratinization as they move toward the surface.

Structure of the Hair Shaft

From Atoms to Beautiful Hair

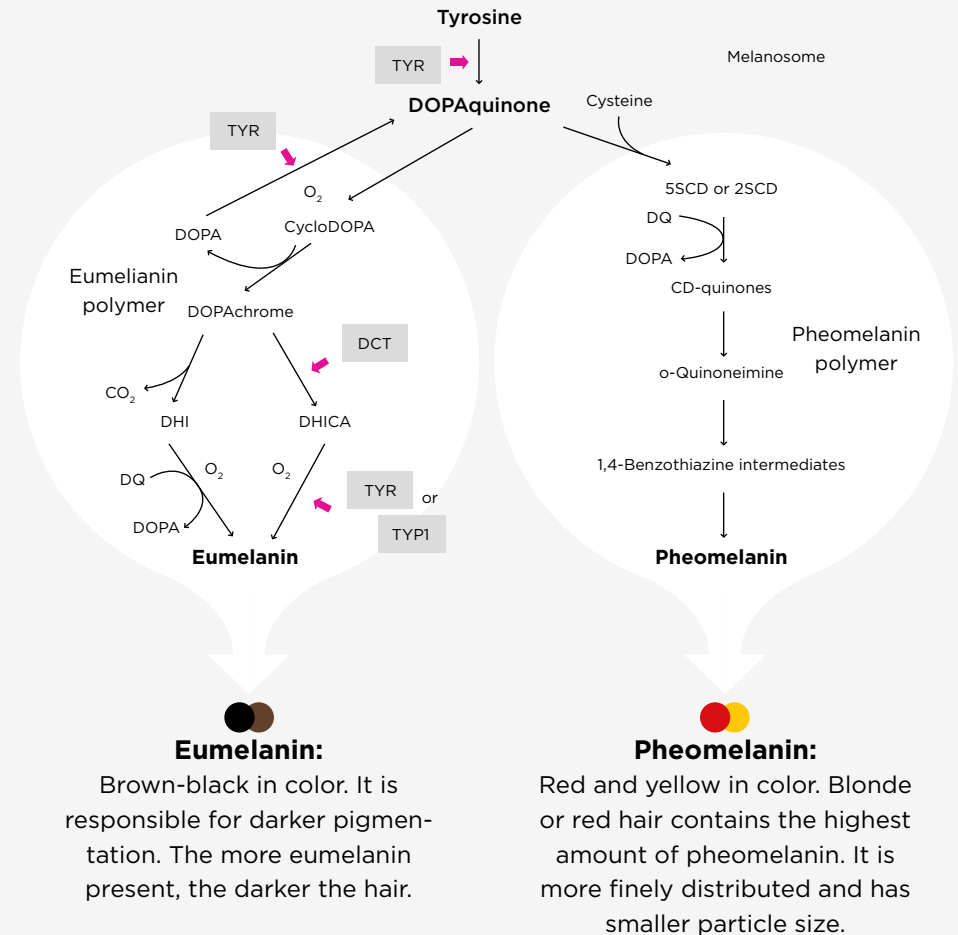


Natural Base Pigmentation

The natural base pigmentation of hair is primarily determined by **genetics** and by the type and amount of **melanin** present in the hair strands. The two types of melanin are produced by melanocytes. These cells are located in the hair follicles and transform amino acids into pigments.

THE AMOUNT AND RATIO OF MELANINS DETERMINE THE NATURAL HAIR COLOR.

The Two Main Types of MELANIN



Biochemistry of Hair Color Formation

The formation of the skin and hair pigment (melanin) requires phenylalanine, which, through enzymatic oxidation, is gradually converted into melanin in several steps.

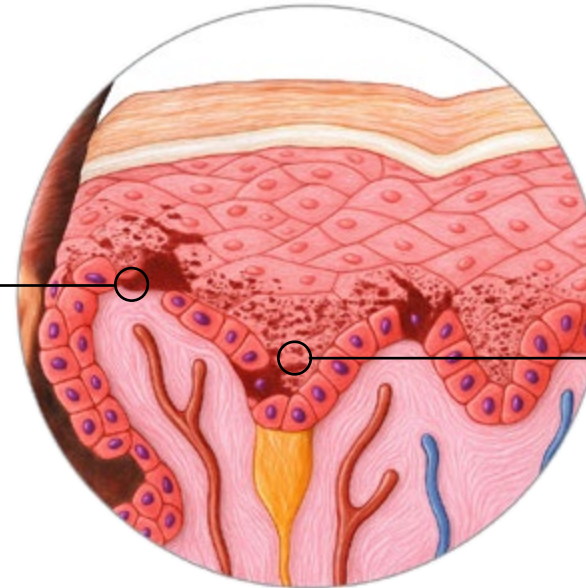
CONDITIONS FOR PIGMENT FORMATION

- Presence of enzymes (tyrosinase, dopa oxidase)
- Presence of Cu^{2+} ions
- Slightly alkaline medium

The color of the skin is determined by **melanin** located in the basal layer, which is produced during protein synthesis. In the case of hair, the pigment is produced in the root portion of the hair.

Melanocytes

are hexagonal pigment-producing cells that contain melanin.




Melanin


is a natural pigment produced in cell organelles called melanosomes within the melanocytes. It is responsible for giving hair its color.

02 | COLOR, CREATE, BE CREATIVE,
KALLOS COSMETICS HAIR COLORS

PERMANENT HAIR COLORING



- Permanent Color Change
- Intensive Effect
- Perfect Gray Coverage
- Maximum Safety
- Cares for and Protects the Hair Structure



- Irritation-Free
- Unlimited Creativity
- Incredible Shine Effect
- Optimal Price-Value Ratio

KJMN Professional Cream Hair Color

With a new-generation formula and carefully selected ingredients

KEY ACTIVE INGREDIENTS



Argan Oil Extract

Argania Spinosa Kernel Oil



Linalool synthesized from cannabis flowers



Geraniol from the flowers of the Geranium family

They are responsible for repairing the hair structure, ensuring the result of permanent coloring, providing outstanding color retention, delivering perfect gray coverage, enhancing hair elasticity, creating natural, radiant shades, and leaving the hair shiny.



Thanks to the active ingredients of argan oil and keratin, it provides optimal protection for both the scalp and the hair strands. Natural, radiant shades. Perfect gray coverage. Outstanding color retention.

Production & Quality

Our KJMN professional cream hair colors are **manufactured in Italy by the renowned HSA Cosmetics SpA.**

With over 40 years of professional experience, in-house laboratory development, and the trusted “Made in Italy” quality guarantee, our hair colors deliver vibrant shades, maximum durability, and excellent coverage – without compromise.



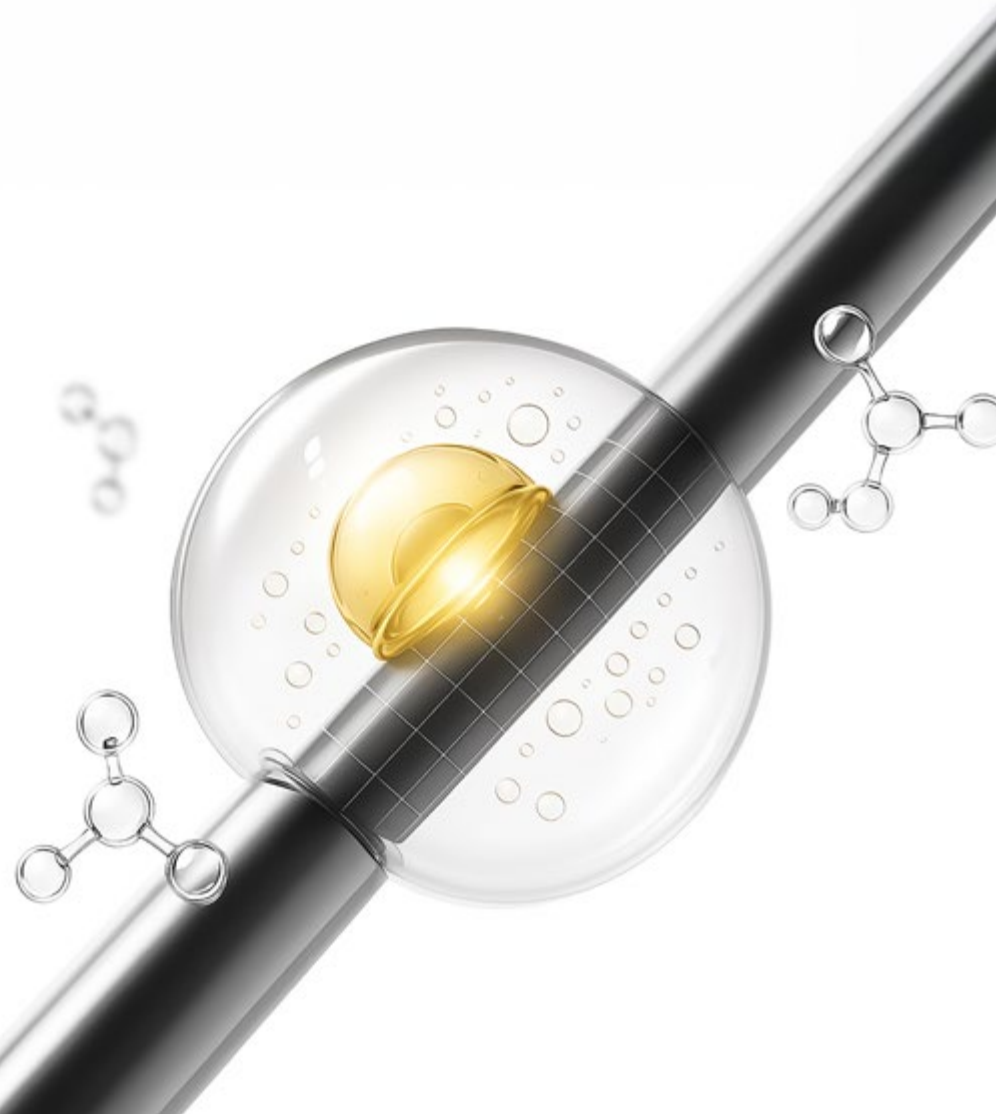
INTERNATIONAL SUCCESS

Today, KJMN professional cream hair colors are distributed in **19 countries.** Every year, nearly **500,000 boxes** reach customers, and we are proud that **more than one million women worldwide color their hair** with our brilliant shades. This is a true testament to quality, reliability, and professional performance.



The innovative formula of KJMN Permanent Hair Color provides the following benefits for the hair:

- | | |
|---------------------------|---|
| PROPYLENE GLYCOL | <ul style="list-style-type: none">• Helps maintain the hair's moisture content during coloring. |
| POLYQUATERNIUM-6 | <ul style="list-style-type: none">• Conditions the hair, adds shine, and does not weigh it down. |
| HYDROLYZED KERATIN | <ul style="list-style-type: none">• A low molecular weight ingredient that provides deep hydration from within the hair shaft.• Leaves hair soft and silky to the touch. |
| ARGAN OIL | <ul style="list-style-type: none">• An elixir for the hair, rich in Vitamin E.• Provides protection against heat damage.• Strengthens the hair's external barrier.• Has a reconstructive effect. |
| ASCORBIC ACID | <ul style="list-style-type: none">• An antioxidant-rich ingredient that helps slow down hair aging.• Reduces UV-induced damage.• Ensures longer-lasting color results. |



NATURAL



NATURAL PLUS



ASH



EXTRA ASH



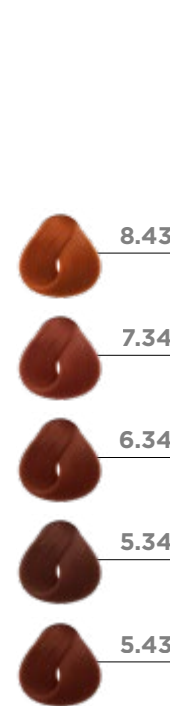
BEIGE



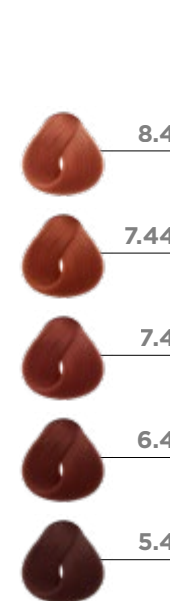
GOLD



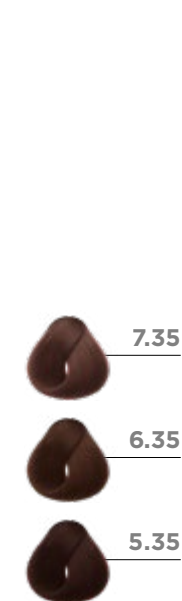
GOLD COPPER



COPPER



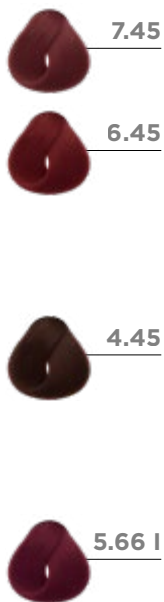
GOLDEN BROWN



INTENSE RED



COPPER BROWN



CHOCOLATE BROWN



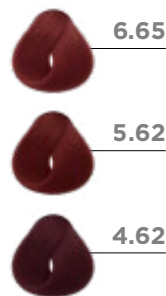
BROWN



MAHOGANY



MAHOGANY RED



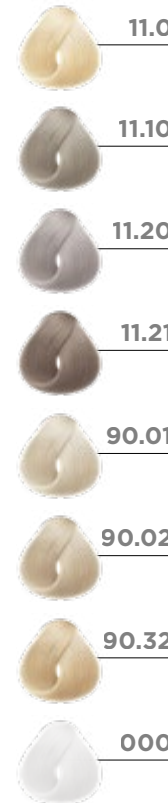
RED



VIOLET



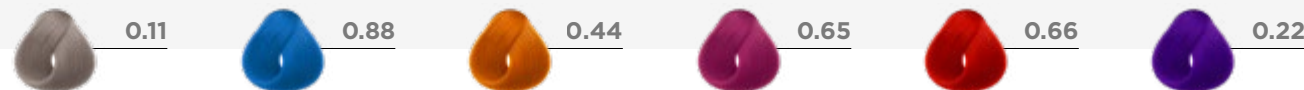
EXTRA BLONDE 1:2



ULTRA BLONDE 1:2



MIXTONE



Hair Coloring Step by Step

PROFESSIONAL HAIR COLORING

KALLOS COSMETICS



01

Welcoming the client

building trust

02

Consultation

discussing the desired hair color and shade

03

Base Shade Analysis

determining the natural level

04

Determining the percentage of gray hair

05

Determine

the hair color in the mid-lengths and ends, whether dyed or natural.

06

Structure Diagnosis

determine the hair texture

07

Determine

the target color level desired by the client

08

Determine

the shade and tone corresponding to the target color level

09

Explaining the coloring protocol to the client

technique, processing time, aftercare

10

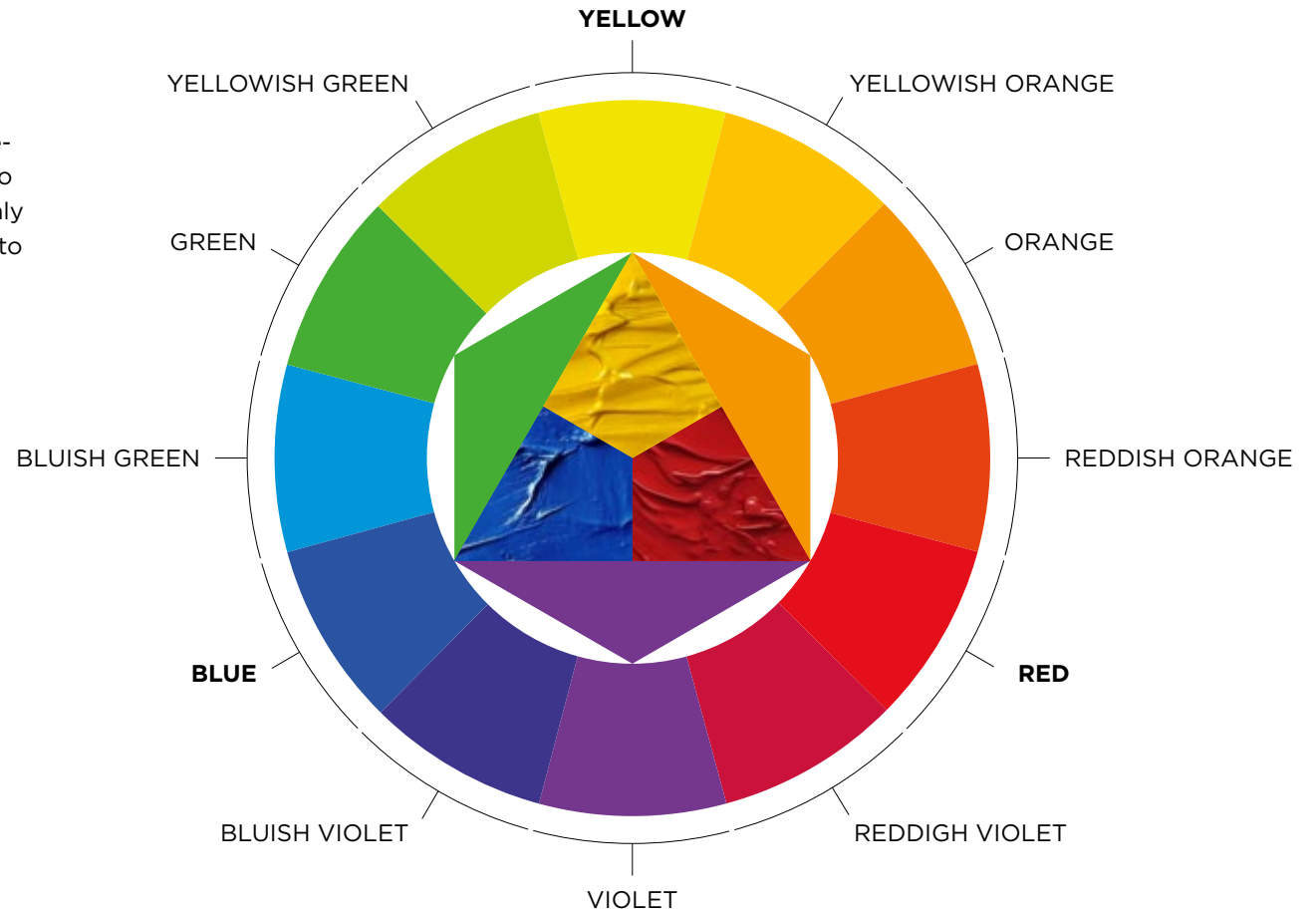
Advise

the client on home hair care: personalized product and routine recommendations

Colorimetry is the science of measuring and quantifying colors, used to accurately describe and compare them.

The word “colorimetry” is derived from the latin word “color” (color) and the greek word “metria” (measurement).

It is also important to know that there is no color without light, since color is the ability of a body to reflect part of the light frequencies it does not absorb. On the color spectrum, it is easy to describe an infinite number of colors, but to create them we only need three, called primary colors. the primary colors expand into secondary and tertiary colors, which are formed by mixing the three primaries: **YELLOW, BLUE, and RED.**



Determining hair color **step 1**

Color depth and level

The color level or depth defines how light or dark the hair is

Level 1 is the darkest shade, black, while level 10 is the lightest blonde. For accurate color determination, a precise diagnosis is essential to identify the natural base color and ensure that the desired hair color can realistically be achieved according to the client's wishes.

An international scale from 1 to 10 helps identify both the starting and the target color level.

FROM 1 TO 10 - FROM BLACK TO BLONDE






The color depth and level can be: black, darkest brown, dark brown, medium brown, light brown, dark blonde, medium blonde, light blonde, very light blonde, pastel blonde.



Determining hair color **step 2**

Shade, tone

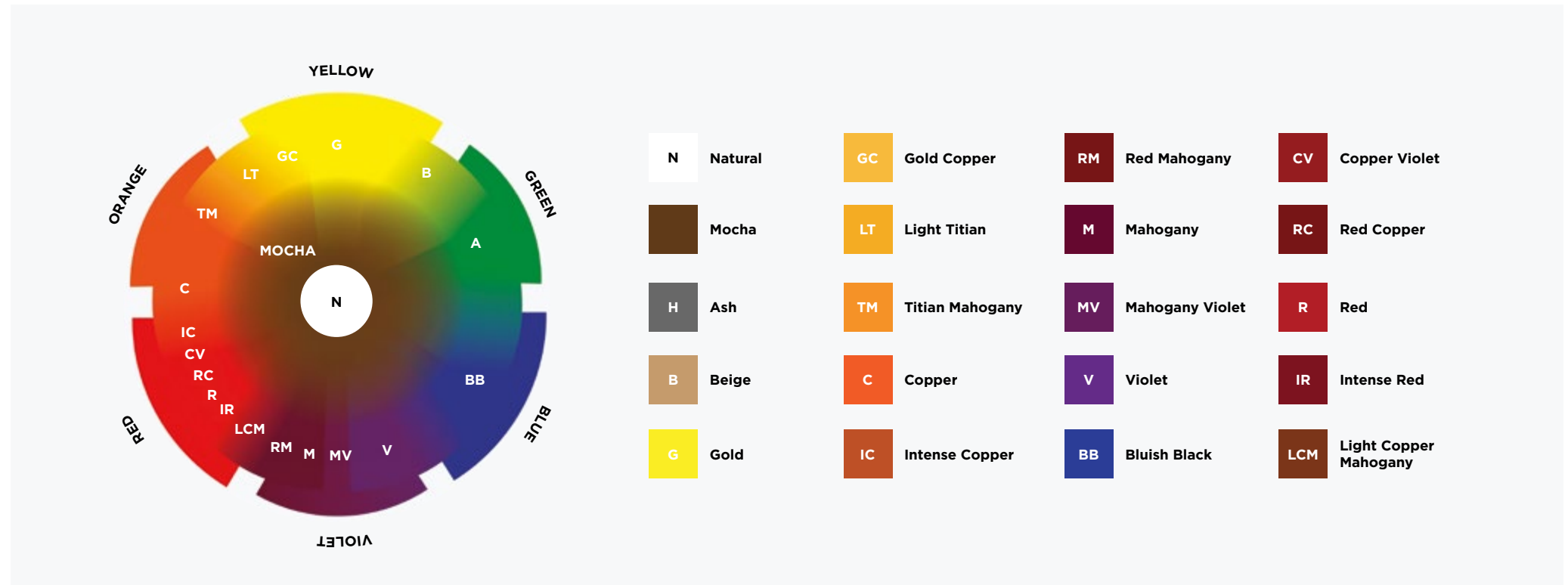
Hair color is only complete when, after determining the color level, the shade is also identified. Each color level has corresponding shades, which are defined by pigments. The table below shows the six main shades and the predominant pigments they contain.

	SHADE		PIGMENT
	NATURAL	0	NEUTRAL
	ASH	1	BLUE GREEN
	GOLD	3	YELLOW
	COPPER	4	ORANGE
	RED	5	RED
	VIOLET	7	VIOLET



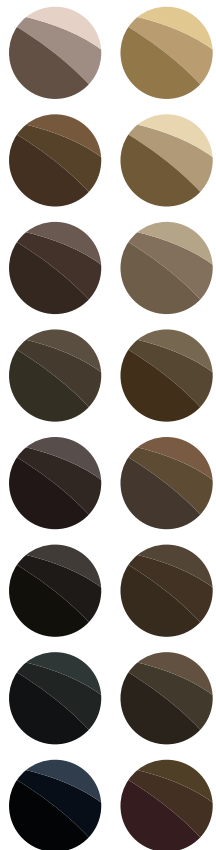
Pigments in hair color for determining hair shades

Once the color level has been identified and the shades are known, **it is essential to understand which tone contains which color pigment.**



Shade categories

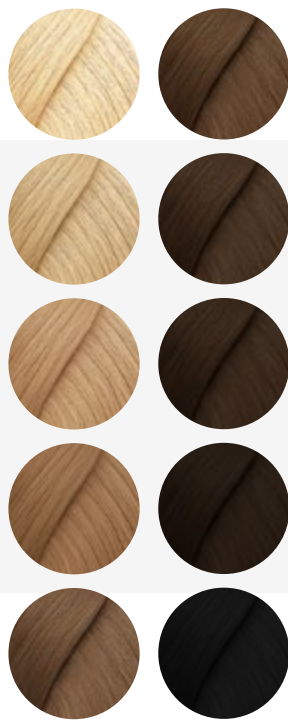
COOL COLORS



The cool colors are those associated with the sky, water, and ice: these are mainly the shades of green, blue, and violet.



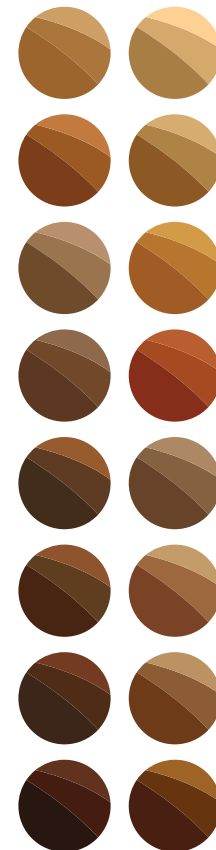
NATURAL COLORS



The warm colors are associated with the colors of the sun and fire. these include the shades of yellow, orange, and red.



WARM COLORS



Diagnosis

Regrowth

Determine the natural base color of the root regrowth

Hair length

Identify the color level and shade of the mid-lengths

Hair ends

Identify the color level and shade of the hair ends



Principles for making **an accurate diagnosis**

01

Determine the base color

using the color scale

02

Determine the percentage of gray hair

using the color scale

03

Select the necessary products for the process

based on the training





Black

Lightest blonde

Starting base

The client's natural base color must be identified

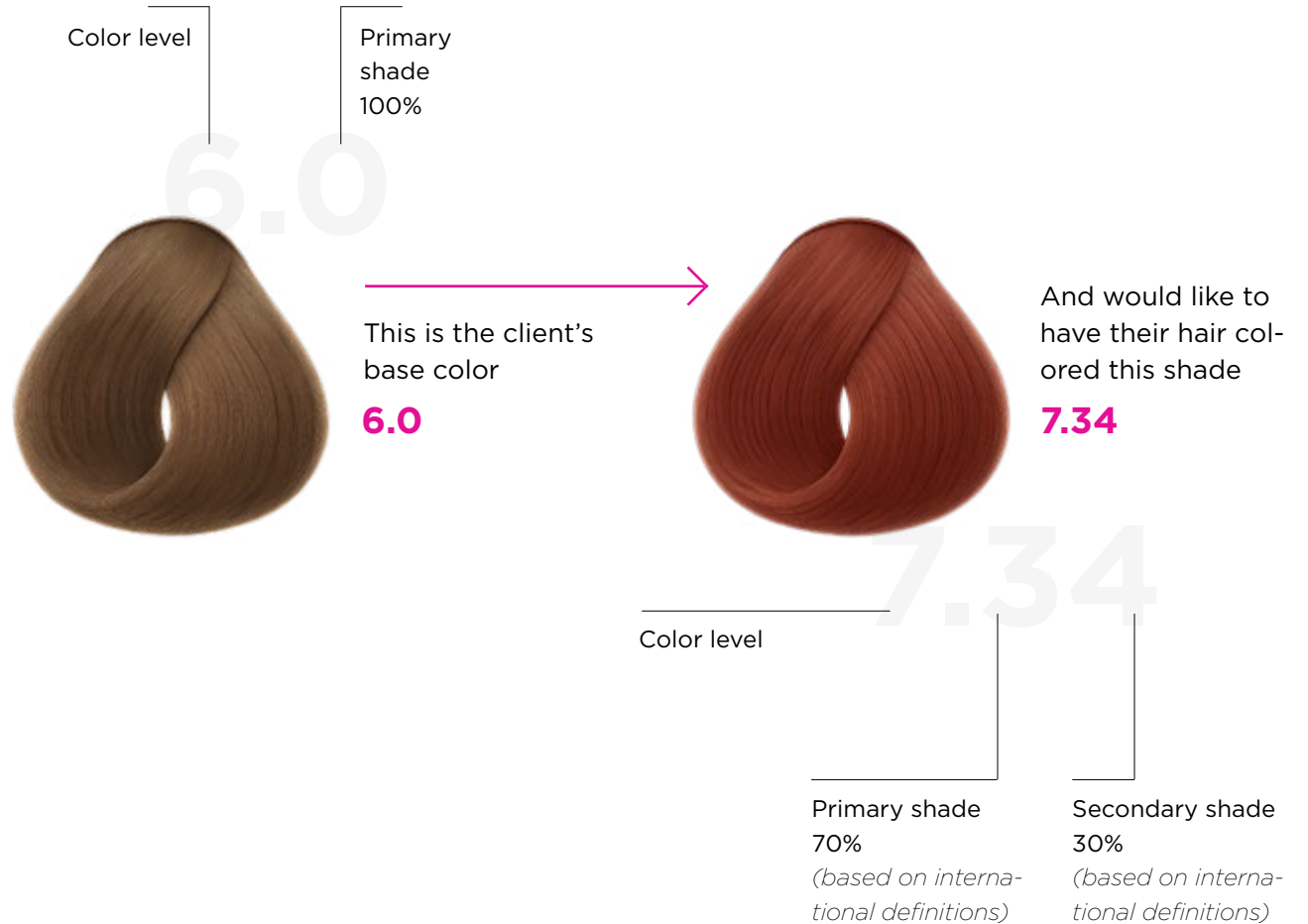
Target color level

Based on the client's wishes, the target color level and depth must be determined

The numbering of hair color

Once we have determined the client's natural base color and, through communication and visual references, understood their wishes, it is time to take a color tube from the shelf. But which one?

WHAT IS WRITTEN ON THE TUBE?



KALLOS KJMN Hydrogen Peroxide Emulsion

VOLUME	%	USE OF HYDROGEN PEROXIDE EMULSION
10 V	3%	Darker coloring - color-on-color application – gray coverage (depending on hair structure, and typically for natural hair coloring) lightening by 1 level
20 V	6%	Gray coverage – lighter coloring (depending on hair structure) lightening by 2 levels
30 V	9%	Gray coverage – lighter coloring (depending on hair structure) lightening by 3 levels
40 V	12%	lightening by 4–5 levels (depending on hair structure) and for use with high-lift blondes





EXAMPLE:

Starting base color: 6

Target color level: 7

Therefore, the difference is 1 level.



SOLUTION	
 30gr 7.34 KJMN Permanent Cream Hair Colour	+  30gr 10V 3% H ₂ O ₂ Hydrogen Peroxide Emulsion
Mixing ratio: 1:1	Processing time: 30 min.

03 | HAIR COLORING WITH EXAMPLES

BROWN Hair Coloring

Natural, customized shades.



Use the **KJMN Permanent Cream Hair Color CHOCOLATE Series 53.**



EXAMPLE:

Our guest's natural base hair color is level 5.
She would like to dye her hair two levels
lighter to a chocolate brown shade.



SOLUTION	
 30gr 7.53 KJMN Permanent Cream Hair Colour	+  30gr 20V 6% H ₂ O ₂ Hydrogen Peroxide Emulsion
Mixing ratio: 1:1	Processing time: 30 min.

RESULT:

Chocolate hair color at level 7.
A glossy, permanent hair color
with a perfect shade effect

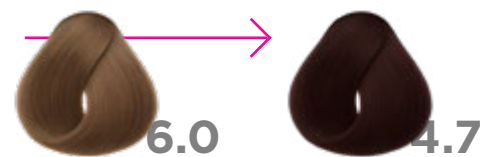
Darker Coloring



According to the client's wishes, mix the selected hair color with 10V (3%) hydrogen peroxide developer. For darker coloring, do not use a stronger concentration in order to preserve the structural integrity of the hair.



EXAMPLE:

The client's natural base level is 6.
She wishes to achieve a mocha brown shade that is 2 levels darker than her natural color.



SOLUTION	
 30gr 4.7 KJMN Permanent Cream Hair Colour	+  30gr 10V 3% H ₂ O ₂ Hydrogen Peroxide Emulsion
Mixing ratio: 1:1	Processing time: 30 min.

RESULT:

Mocha brown hair color at level 4.
A glossy, permanent hair color
with a perfect shade effect.

BLONDE Hair Coloring

Natural, customized shades.



Use the **KJMN Permanent Cream Hair Color BLONDE shades** from the **0, 1, 11**, or even the **Golden Blonde Series 3**.



EXAMPLE:

Our guest's natural base hair color is level 6.
She would like to dye her hair three levels
lighter to a natural blonde shade.



SOLUTION	
 30gr 9.00 KJMN Permanent Cream Hair Colour	+  30gr 30V 9% H ₂ O ₂ Hydrogen Peroxide Emulsion
Mixing ratio: 1:1	Processing time: 30 min.

RESULT:

Natural blonde hair color at level 9.
A glossy, permanent hair color with
a perfect shade effect.

BLONDE Hair Coloring with high-lift blondes




Natural, customized shades. Use the **KJMN Permanent Cream Hair Color SPECIAL ULTRA BLONDE series**. Ideal when up to 5 levels of lightening are desired without pre-bleaching.



EXAMPLE:

The client's natural base level is 7.
She wishes to achieve a pastel ultra blonde shade, 5 levels lighter than her natural color.



SOLUTION		
 30gr 12.8 KJMN Permanent Cream Hair Colour	+  2gr 0.22 MIXTONE	+  64gr 40V 12% H ₂ O ₂ Hydrogen Peroxide Emulsion
Mixing ratio: 1:2	Processing time: 30 min.	

RESULT:

Pastel blonde hair color at level 12. A glossy, permanent hair color with a perfect shade effect.

RED Hair Coloring



Natural, customized shades. Use the **KJMN Permanent Cream Hair Color GOLDEN COPPER** and **RED** shades from the **3, 4, 5, and 6 series**.



EXAMPLE:

Our guest's natural base hair color is level 6. She would like to dye her hair two levels lighter to a copper red shade.



SOLUTION	
 30gr 8.43 KJMN Permanent Cream Hair Colour	+  30gr 30V 9% H ₂ O ₂ Hydrogen Peroxide Emulsion
Mixing ratio: 1:1	Processing time: 30 min.

RESULT:

Copper red hair color at level 8.
 A glossy, permanent hair color with
 a perfect shade effect.

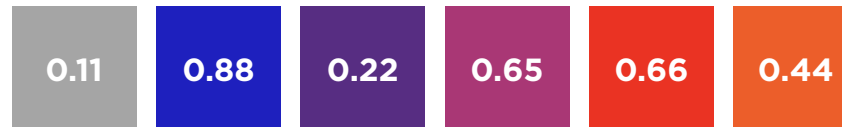


Using **MIXTONES**

They neutralize unwanted tones and make it possible to create countless new shades.

Add the appropriate amount according to the selected shade. The lighter the color, the less MIXTONE should be added. For levels 9-10, add 5% of the total cream amount. To achieve darker tones, use a larger quantity. In no case should the amount exceed 30%. After this, mix the entire cream quantity with the PERMANENT CREAM HAIR COLOR and H₂O₂ in a 1:1 ratio.

MIXTONES



COLORING WITH MIXTONES

Unleash your creativity:

- create radiant, intense shades,
- or apply extreme or pastel colors on pre-lightened hair.

Goal: colorful shades after bleaching.




1. Lighten the hair up to level 10.
2. Wash thoroughly, then dry the hair.
3. Prepare the mixture:
CREATIVELY, AS DESIRED
40 g pigment-free hair color (000)
+5 g or less, 10 g or more (depending on the desired intensity) of any MIXTONE
(or a combination of several mixtones)
an equal amount of 10V (3%) H₂O₂ corresponding to the grams of color used.

SOLUTION:

Extreme shades or softer pastel tones.

Example of MIXTONE USAGE

Goal: to achieve an even more intense, redder color effect than shade 7.66.

SOLUTION	
 30gr 7.66 KJMN Permanent Cream Hair Colour	 5gr 0.66 MIXTONE
 35gr 40V 12% H ₂ O ₂ Hydrogen Peroxide Emulsion	
Mixing ratio: 1:1	Processing time: 30 min.

RESULT:

A more intense red hair color than 7.66.

A glossy, permanent hair color with a perfect shade effect.



GRAY Hair Coloring

Steps of Gray Hair Coloring:

- Perform a diagnosis.
- Determine the percentage of gray hair.
- Identify the client's natural base color.
- Discuss the desired color and shade with the client.

30%



40%



50-70%



100%



Mixing ratios for coloring gray hair:

According to the percentage of gray hair, mix the desired shade with an equal percentage of a natural base color

GRAY HAIR %	-	NATURAL BASE % TO ADD
20%	-	Add 20% natural base to the mixture along with the desired shade.
30%	-	Add 30% natural base to the mixture along with the desired shade.
40%	-	Add 40% natural base to the mixture along with the desired shade.
50-100%	-	Add 50-100% natural base to the mixture along with the desired shade.

Gray Hair Coloring

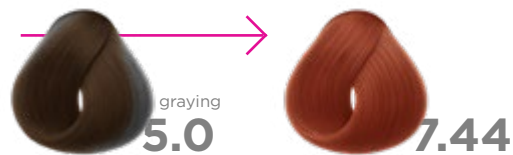
Natural, customized shades.





Use all **NATURAL, ASH, GOLD, COPPER, and RED** shades of the **KJMN Permanent Cream Hair Color** from the **0, 00** (for intensive gray coverage), **3, 4, 5, 6, etc. series.**



EXAMPLE:

Our guest's natural base hair color is level 5 with 30% gray. She would like to dye her hair two levels lighter to a blonde shade with an intense copper tone.



SOLUTION	
 21gr 7.44 KJMN Permanent Cream Hair Colour	
+	
 9gr 7.00 KJMN Permanent Cream Hair Colour	 5gr 0.44 MIXTON
	 35gr 30V 9% H ₂ O ₂ Hydrogen Peroxide Emulsion
Mixing ratio: 1:1	Processing time: 30p

RESULT:

Intense copper red hair color at level 7.
 A glossy, permanent hair color with a perfect shade effect.



Men's Hair Coloring



Natural shades, and absolutely NO RED!
Red pigments make men's colored hair look unnatural. Use the **KJMN Permanent Cream Hair Color ASH Series 01** and **EXTRA ASH Series 11**.



EXAMPLE:

Our guest's natural base hair color is level 6. He would like to dye his graying hair to an ash shade similar to his original color.



SOLUTION	
 30gr 6.1 KJMN Permanent Cream Hair Colour	+  30gr 10V 3% H ₂ O ₂ Hydrogen Peroxide Emulsion
Mixing ratio: 1:1	Processing time: 30p

RESULT:

Level 6 hair color.





















A natural-looking coverage with an uncolored effect.



04 | THE TECHNIQUE OF HAIR LIGHTENING

Decolorization – Color Removal – Lightening FROM BLACK TO BLONDE

Our goal: to lighten by 10 levels
on previously black-dyed hair.

NATURAL SHADES NAMES	HAIR COLOR SAMPLES	SHADE LEVEL, DEPTH VALUE	DOMINANT PIGMENTS
Lightest Blonde		10.0	 Lightest Yellow
Light Chestnut Brown		9.0	 Red-Orange
Very Light Blonde		8.0	 Light Yellow
Medium Chestnut Brown		7.0	 Red
Light Blonde		6.0	 Lemon-Orange
Dark Chestnut Brown		5.0	 Dark Red
Medium Blonde		4.0	 Orange
Darkest Chestnut Brown		3.0	 Violet-Red
Dark Blonde		2.0	 Orangey Red
Black		1.0	 Violet

IT IS ESSENTIAL TO KNOW
WHICH COLOR LEVEL CONTAINS
WHICH PIGMENT.

Technology of Lightening and Color Removal

THE BASIS OF LIGHTENING

Lightening (decolorization) is the process of removing color, with the goal of making the hair or body hair lighter. It has a long history: plant extracts and teas were once used for this purpose, such as chamomile and lemon. The real breakthrough, however, came with the introduction of bleaching powders and lightening hair dyes.

Effective lightening is always achieved by mixing two components: the **oxidizing agent** and the **lightening product**.

- Most bleaching powders used for lightening can lift up to 7 levels or more.
- Mixing ratio: 1:2
- Processing time: 30–50 minutes
- Apply to dry hair.
- After the processing time, rinse thoroughly and wash the hair with shampoo.



FULL LIGHTENING - Steps and Checkpoints



01

Preparations

(Scalp and Client Condition)

- Examine the scalp to rule out injuries, inflammation, or tumors.
- Ask about any previous allergic reactions (especially protein sensitivity or diabetes).

02

HAIR DIAGNOSIS

Check and record:

- Hair length and density
- Absorbency
(porosity)
- Condition of the hair shaft
(healthy / damaged)
- Current hair color or previous treatments
(dyeing, perm, lightening)
- Degree of lightening
(number of levels to be achieved)
- Planned follow-up work
(coloring, toning, pastelizing)
- Client's wishes and expected result



03

Lightening Process

- Select the appropriate bleaching powder and developer based on the hair diagnosis.
- During the processing time, regularly check the condition of the hair.

04

Rinsing & Shampoo Wash

- Once the desired color level has been achieved, rinse the product thoroughly with plenty of water, then wash the hair with a mild pH-balancing shampoo.

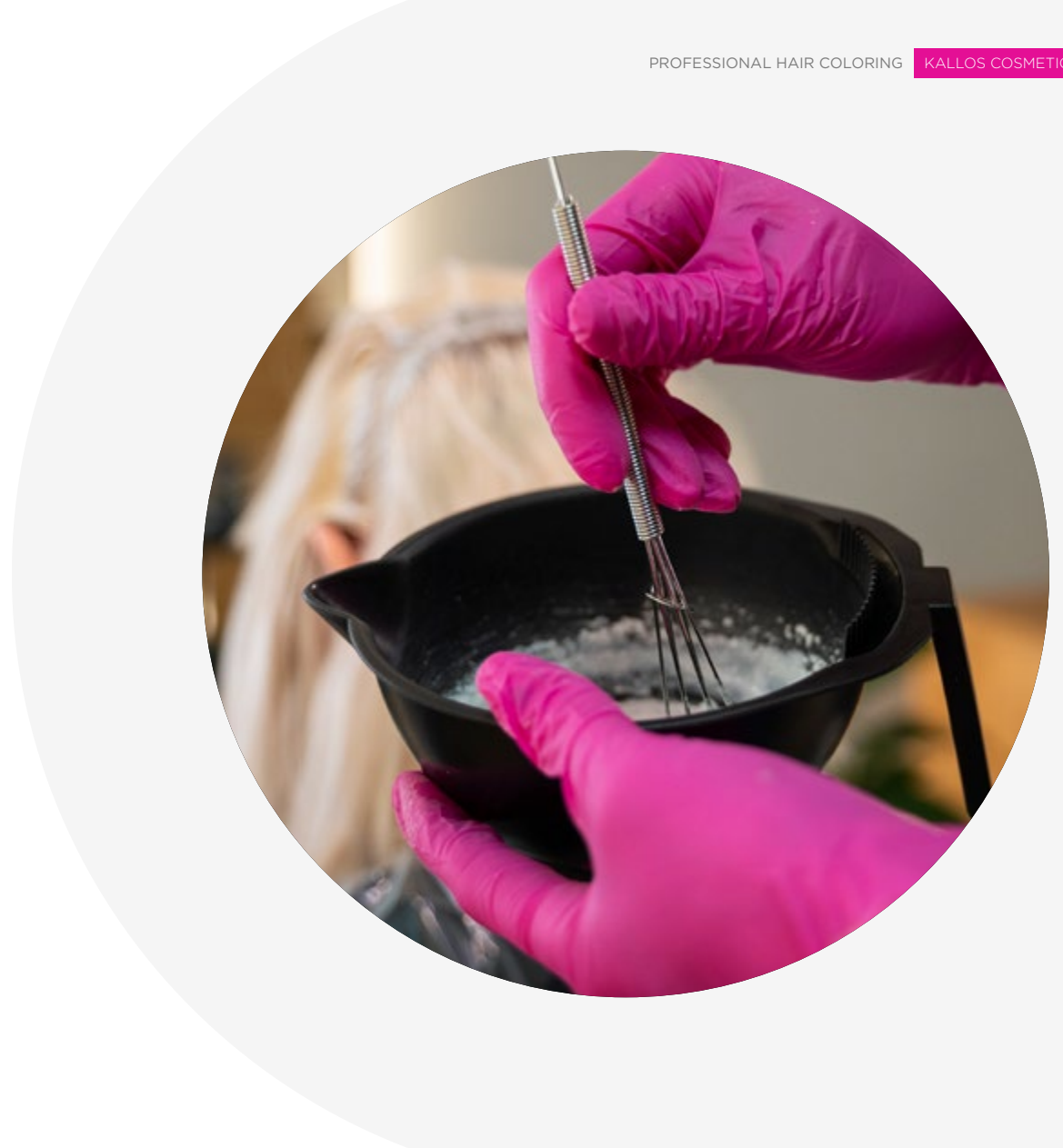
05

Aftercare

- After pastelizing / toning / coloring, apply a deep conditioning or color-lock treatment.
- Apply the aftercare treatment only once the final shade has been achieved, to avoid altering the color adhesion.

Types of Hair Lightening

- Pre-color lightening (base lightening)
- Full lightening
- Root lightening (retouch)
- Tone lightening
- Highlighting
- Upper lip lightening (for women and men)
- Beard lightening (for women and men)
- Eyebrow lightening (base lightening)
- Limb hair lightening
- Contour and nape lightening





Pre-color base lightening

Lightening by 4-5 levels as preparation for coloring.

Mixing: bleaching powder + 20-30 Vol (3-6%) H_2O_2 .

When to apply?

Generally before coloring with ash or silver shades, but also when transitioning from dark, previously colored hair to a lighter shade.

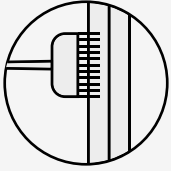
How long to leave it on?

Rinse when the hair is already 1-2 levels lighter than the target shade.

Toning: when applying the final color, use only 10 Vol (3%) developer.

Recommended structural treatment: Plex / pH-balancing treatment.





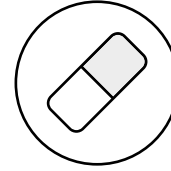
Regrowth Lightening

Lightening the outgrown (regrowth) section.

For achieving the same lift result, a lower strength developer is required for root lightening.

If regrowth is more than 2 cm, the root lightening must be performed in two steps. DO NOT apply the product to previously lightened sections.

For root lightening, use a 6% solution, maximum 9%. Always begin the application on the darkest area—generally at the nape—then continue with the back of the head, the sides, and finally the crown. Apply to the temple and hairline contour last.

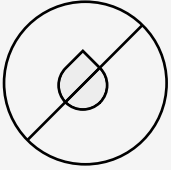


Color Erasing

Suitable for removing artificial pigments. It erases and eliminates incompatible shades, while the depth level remains unchanged.

Mix 30 g of bleaching powder with 60 ml of hot water (80°C). Apply to the colored sections strand by strand using a brush or sponge. During development, gently massage the strands. No heat should be applied.

After 5-20 minutes, rinse thoroughly and shampoo the hair. Once dry, continue with the coloring process.



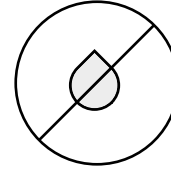
Cleansing

Removal of pigments deposited from repeated coloring. Before starting the cleansing process, a color erasing treatment can be performed. This allows lightening to proceed more quickly and ensures a more uniform result.

For lightening up to two levels:

Mix bleaching powder with 1.5 parts 3% (10 Vol) developer. Processing time: 15-40 minutes. Apply on dry hair, starting at the darkest area with a brush.

Do not apply heat, as accelerating the process reduces effectiveness.



Cocktailing

Provides a corrective option for neutralizing yellow tones with violet and for eliminating patchiness.

It cleanses the hair of greenish or grayish tones. Use it when you want to change the shade but not the depth level.







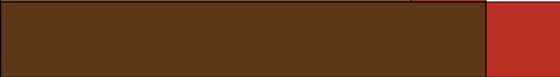
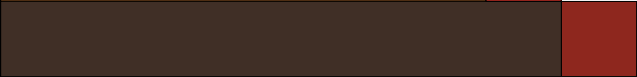
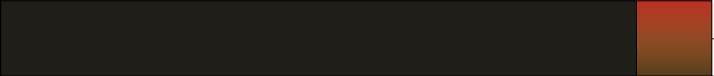
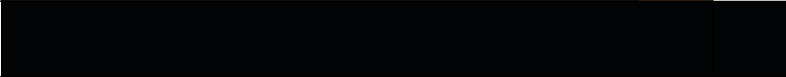
Mix the bleaching powder with 3% (10 Vol) H₂O₂ and shampoo.

Processing time: 5-15 minutes.

05 | COLOR
FILLING

Lightening Chart

When lightening a hair color, the following pigments are revealed.

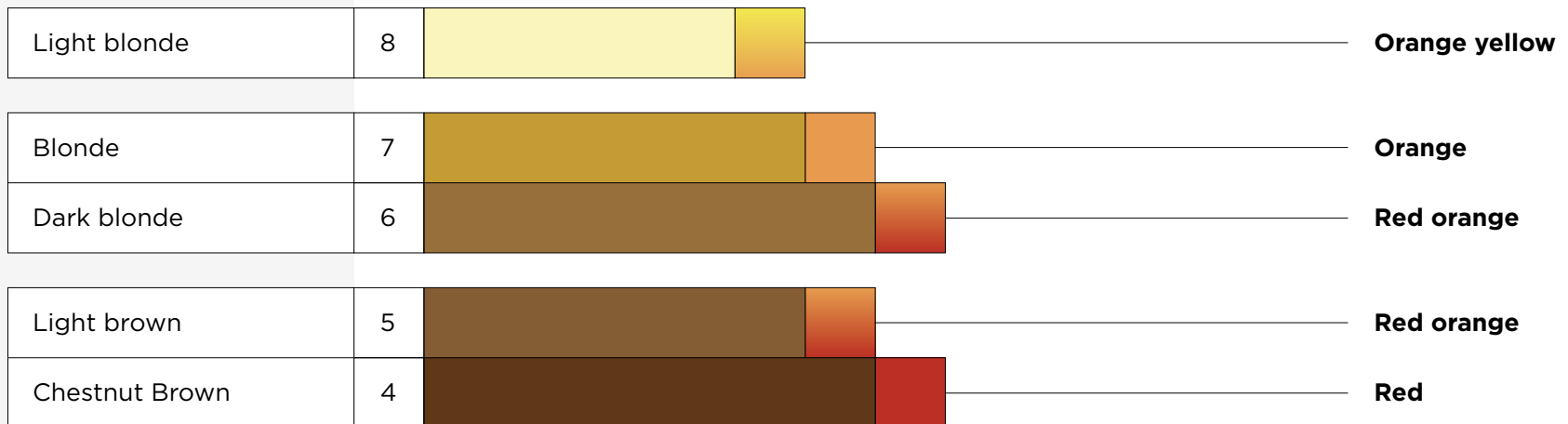
Platinum Blonde	10		Light yellow
Very Light Blonde	9		Yellow
Light Blonde	8		Orange-yellow
Blonde	7		Orange
Dark blonde	6		Red-orange
Light brown	5		Red-orange
Chestnut Brown	4		Red
Dark brown	3		Dark red
Brownish black	2		Reddish brown
Black	1		Black

EXAMPLE:

If we lighten hair with a level 4 depth up to a level 9, we obtain a level 9 shade with yellow underlying pigment.



But the following colors will be missing:



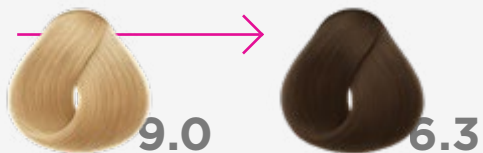
| Color Filling

If our client is not satisfied with the light hair color and requests a darker shade, the missing pigments must be reintroduced into the hair. This process is called repigmentation.



EXAMPLE:

Our guest's lightened base hair color is level 9. She would like a hair color three levels darker, a dark golden blonde, shade 6.3.

**SOLUTION
STEP 1**

Pre-pigmentation: dye the hair with a color one level lighter than the desired shade, while maintaining the target tone.



30gr 7.3
KJMN Permanent
Cream Hair Colour

+



30gr 10V 3%
H₂O₂ Hydrogen
Peroxide Emulsion

Mixing ratio: **1:1**

Processing time: **10p**

STEP 2

Dye the hair to the desired shade.



30gr 6.3
KJMN Permanent
Cream Hair Colour

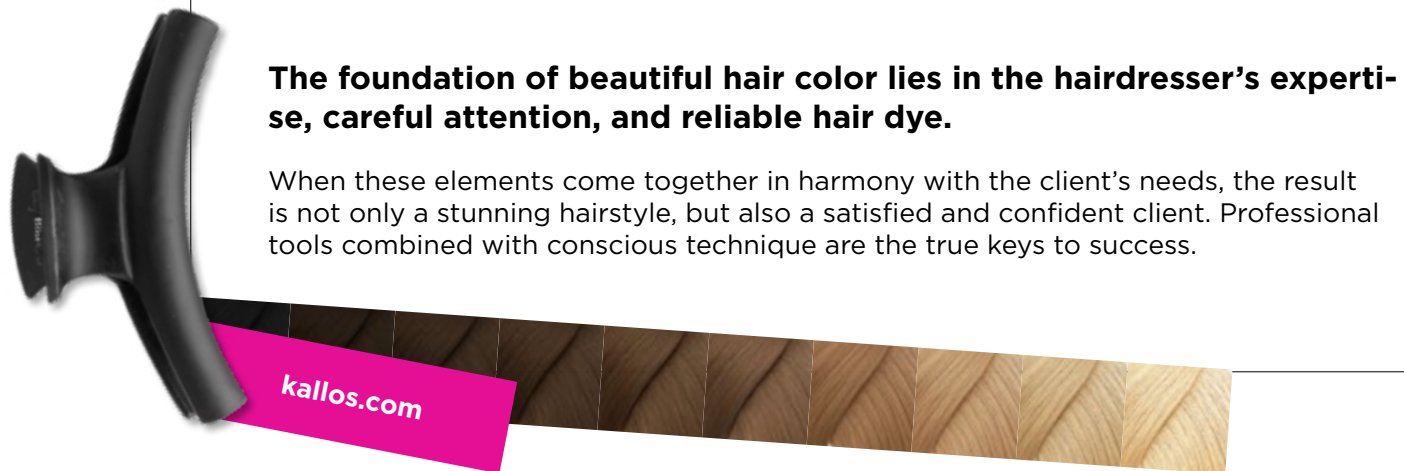
+



30gr 10V 3%
H₂O₂ Hydrogen
Peroxide Emulsion

Mixing ratio: **1:1**

Processing time: **30p**



The foundation of beautiful hair color lies in the hairdresser's expertise, careful attention, and reliable hair dye.

When these elements come together in harmony with the client's needs, the result is not only a stunning hairstyle, but also a satisfied and confident client. Professional tools combined with conscious technique are the true keys to success.

