

USER MANUAL

Massager
BeautyRelax BR-1450

HYPERBLADE



CONTENT:

IMPORTANT SAFETY NOTICES	4
NOTICE	5
CONTRAINDICATIONS	6
PURPOSE OF USE	7
NMES TECHNOLOGY	8
MAIN ADVANTAGES	12
TECHNICAL PARAMETERS	12
PACKAGING CONTENT	13
DEVICE DESCRIPTION	14
HOW TO USE	18
NOTES ON THE USE OF THE DEVICE	19
BATTERY CHARGING	21
CLEANING AND MAINTENANCE	21
DISPOSAL OF USED ELECTRONIC EQUIPMENT	22
CERTIFICATION	22
IMPORTER	22
DECLARATION OF CONFORMITY	23

IMPORTANT SAFETY NOTICES

- It is forbidden to place the applicator of the device on the area of the heart, mouth, head, genital area. Do not use the applicator on areas suffering from skin diseases or abrasions.
- The device must not be used in combination with other medical devices.
- Never use the device in a humid environment.
- To moisturise your skin, try to avoid products with added fragrances. Combined with NMES, they could irritate the skin or cause an allergic reaction.
- Use the device according to the exact instructions in this manual. The device must not be used for any purpose other than to relieve muscle pain and tension.
- Do not repair, disassemble or dismantle any of the components of the device yourself. This would void the warranty and we would not accept any liability for any damage to health or property.
- Do not use the device without first carefully reading this manual.
- If you feel unwell while using the device or experience unexpected health complications, turn off the device immediately and consult your doctor for further use.
- To ensure maximum efficiency of the device, switch off any electronic devices you may be using (MP3 player, mobile phone when on the phone).
- The device must not be used while you are asleep, when you are unable to fully control the device. Serious injury could result.
- Do not use the applicator in one place for more than 30 minutes.
- Make sure that during use the applicator does not come into contact with conductive metal objects (chains, bracelets, rings,...). Remove all such objects for safety.
- Under certain circumstances, the device can only be used with the participation of a physiotherapist.
- The device is intended for external use only.
- The device can only be used by people between the ages of 16 and 60.
- The device is not a medical device.
- Always clean the applicator thoroughly after each treatment. The use of clear alcohol for disinfection is ideal. Dry the applicator thoroughly at the last stage. Moisture can cause oxidation of the applicator. This will significantly increase the life of the applicator head.
- If you do not know what to do, do not hesitate to contact us. Phone: 737196160 or email: mh@santadria.cz Our product manager Martin Hrbek is available to answer any questions or concerns you may have.
- We wish you every success in your efforts in rehabilitation and therapy for your body.
BeautyRelax.cz team



NOTICE

- Read this manual before first use, review all illustrations and keep the manual for future reference.
- If your skin is affected by a serious skin condition, do not use the device. Consult your general practitioner for first use.
- The device is primarily intended for your personal use. Do not share it with family members or friends. If more than one person is using the device, special attention should be paid to hygiene.
- If the device is damaged, does not work properly or has fallen into the water, never put it into operation.
- If the unit is broken, do not touch the internal parts to avoid electric shock.
- If the device falls to the ground, it may be damaged. In this case, do not continue to use the device and contact the dealer's service department.
- Do not use the device near water or in places with increased humidity (bath, shower, swimming pool, etc.).
- The device is not washable. It must not be immersed in water or under a stream of running water.
- Do not leave the device unattended. Always switch off the appliance thoroughly after each use.
- If the device has been moved from a very cold to a very warm environment, wait at least 3 hours before using it.
- The appliance is not intended for use by children or persons whose physical or mental condition does not permit the safe use of the appliance.
- Do not place or use the device on hot heat sources (radiator, stove, fire, etc.)
- Do not attempt to disassemble or repair the device yourself.
- Store the device in a dry environment. Try to keep it protected from dust.
- Do not expose the device to direct sunlight.
- The distributor is not liable for damages caused by improper use contrary to the instructions in this manual. It is not responsible for consequences caused by failure to observe the safety warnings.
- The distributor is not liable for any damage to health or property caused by other uses.



CONTRAINDICATIONS

Under no circumstances should the device be used by persons affected by any of these conditions:

- Cancer, epilepsy, viral diseases
- In a state of high fever
- Serious kidney or liver disease
- Heart disease, pacemaker, hypertension
- Metal implants in the body
- Vascular disorders or arteriosclerosis
- Pregnancy
- Menstruation
- Acneiform keratosis, basalomas, melanomas, spinaliomas, atopic eczema, contact eczema, solar dermatitis, psoriasis
- Persons taking anti-clotting medication
- Persons who require constant supervision may use the device only after consulting a physician
- Never move the device on the eyelids, temple area or thyroid area



Dear customer, thank you for your trust in purchasing our product. Please read all the detailed information in the instruction manual carefully before using it for the first time. Please pay particular attention to the safety warnings. Please use the device exactly as instructed. All of these steps will help to maximize the use of all functions of the device. In this manual we will try to give you the best possible idea of the technology used and how to use the device to best advantage.

If you encounter any uncertainties while reading the instructions, please do not hesitate to contact us at the following email address: mh@santadria.cz

Keep the instructions for use carefully for later reference.

PURPOSE OF USE

The BeautyRelax Hyperblade is a professional massager that gives you a truly effective full body therapy. Cervical spine, shoulders, thighs, calves or knees. It uses the innovative NMES technology - a revolutionary and modern solution for instant relaxation of tight muscles. Forget about all previous massage devices. BeautyRelax Hyperblade is the future you can start using today!



NMES TECHNOLOGY

NMES - "neuromuscular microcurrent electrical stimulation". The specially shaped applicator, which is in contact with the body, generates electrical pulses of very specific power. The power and frequency of the pulses are specially adjusted to penetrate through the fatty tissue directly to the muscles. The electrical pulses activate the motor nerves of the muscles to mimic muscle contraction. This increases blood flow to the strained muscles. The NMES technology has a very significant positive effect in cases of muscle regeneration. By increasing local blood flow, muscles are oxygenated and regenerated more quickly. BeautyRelax Hyperblade is a completely indispensable tool for professional athletes to counteract the symptoms of lactic acid build-up after strenuous physical exercise. The NMES function is activated automatically when the applicator comes into contact with the body.

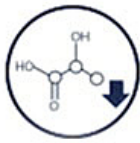
Massage parlours are a thing of the past.

Step into the future with the BeautyRelax Hyperblade!

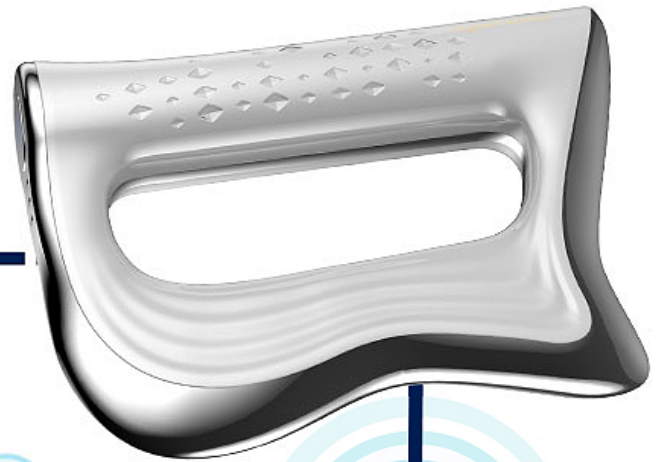
The BeautyRelax Hyperblade has a specially designed shape that allows you to massage yourself or another person. If you massage yourself, you will be able to reach even the harder to reach areas of the body. Neck, joints, waist, legs, arms, hands, shoulders, back. All of these areas can be easily targeted with the BeautyRelax Hyperblade. The unique shape of the applicator adapts to all body folds. It increases the local temperature of the massaged area. The increased blood circulation transports more oxygen and nutrients to the damaged muscle tissue. Regeneration is several times faster compared to conventional manual massage.

Honest in-depth massage targeting muscle tissue

Conventional massagers act only on the upper subcutaneous tissue of the epidermis. They are not able to transfer energy deep down to the muscles. BeautyRelax Hyperblade combines two technologies: NMES and micro vibration oscillation. This allows muscles anywhere on the body to be relaxed.



NMES technology



transmission of an electrical pulse

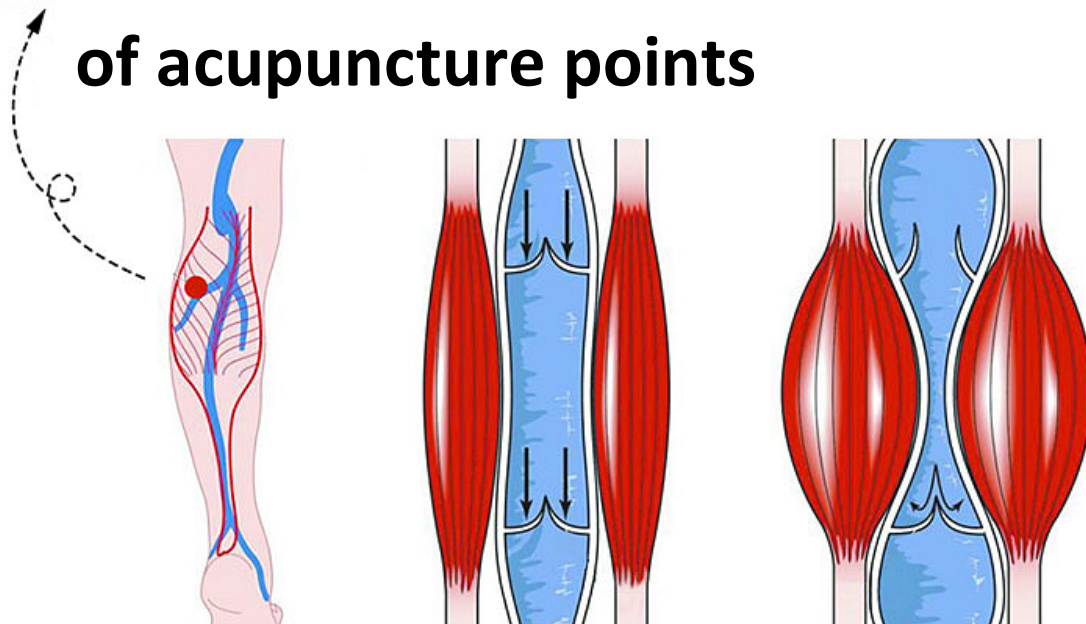
motor nerve stimulus

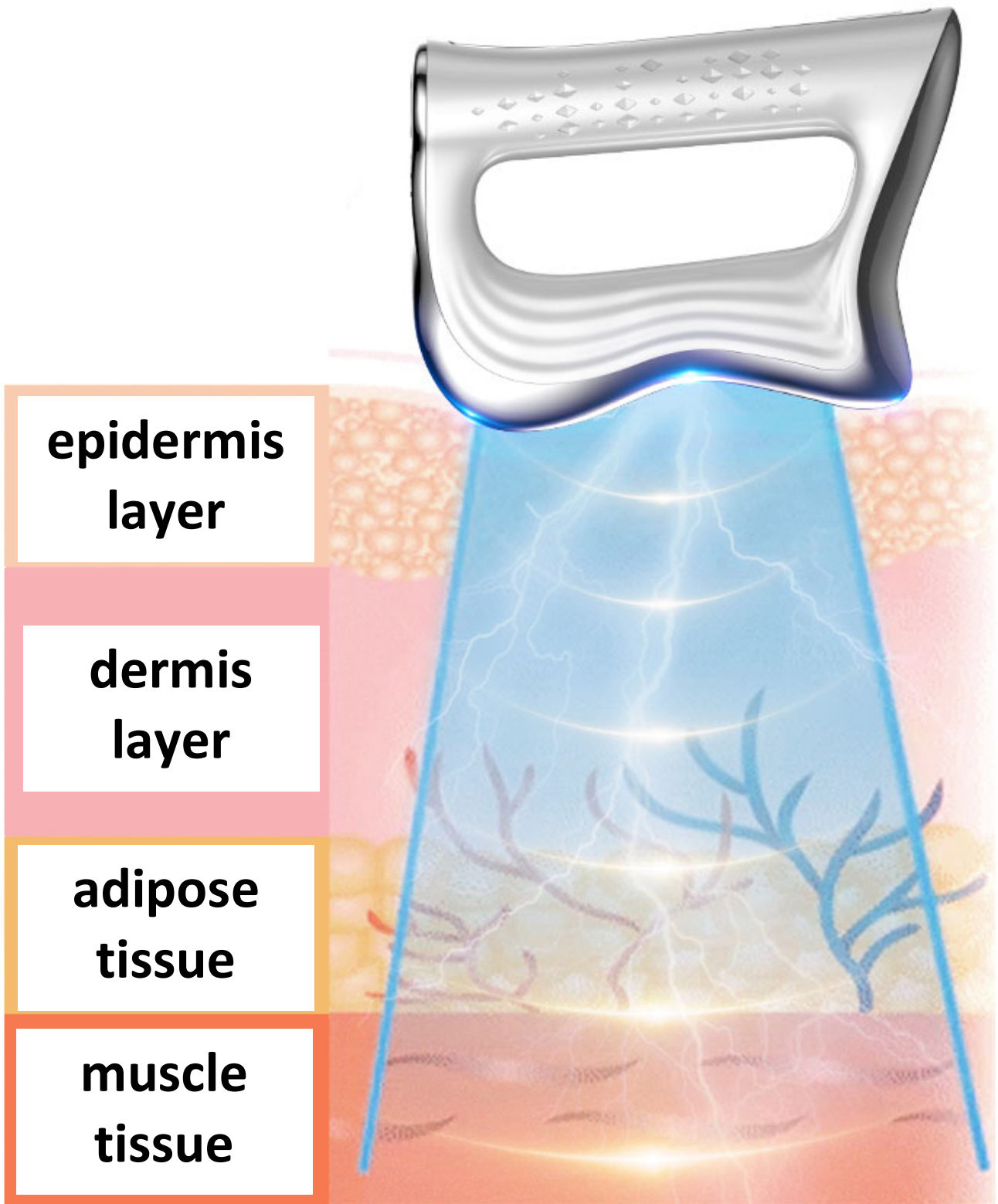
stimulation of muscle contraction
increase in muscle tone

It helps to halve lactic acid and speed up muscle regeneration



**automatic detection
of acupuncture points**





MAIN ADVANTAGES

- Highly effective NMES rehabilitation method.
- Micro vibration oscillations act deeply directly on the muscle tissue.
- Immediate relaxation of stiff muscles.
- Relieve stress and mental tension.
- You will achieve a refreshed feeling when fatigue lasts for a long time.
- Relief of swelling, especially in the limbs.
- Regeneration of the mind after demanding intellectual activity.
- Reduction of muscle pain and stiffness.
- Improvement of local blood circulation.
- Multiple increases in range of motion.
- Highly beneficial therapy for soft tissues.
- The ergonomic shape follows the folds of the body as closely as possible.
- Acceleration of the muscle regeneration process.

TECHNICAL PARAMETERS

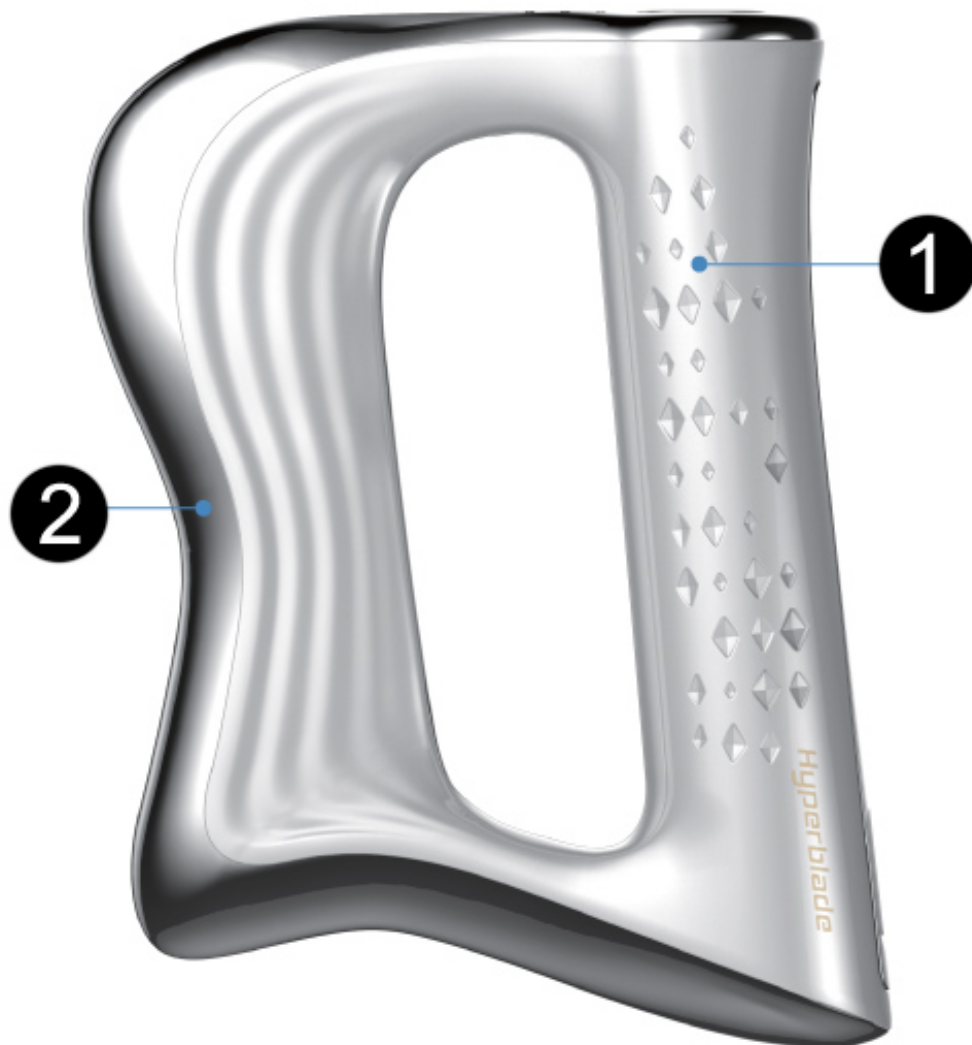
- Rechargeable battery type: rechargeable Li-ion battery.
- Battery capacity: 1100mAh.
- Up to 5 to 7 hours of use on a single charge.
- Charging time: 4 hours.
- 3 massage speeds.
- Operating voltage: 3.7V.
- Device power: 0.5W.
- Low noise level when using the device.
- Battery rechargeable via 220V adapter (included).
- Dimensions: 19,2x14,7x3cm.
- Weight: 227g.

PACKAGING CONTENT



- 1. *User manual*
- 2. *BeautyRelax Hyperblade Massager*
- 3. *Water dispenser*
- 4. *Protective sleeve*
- 5. *Charging cable*

DEVICE DESCRIPTION



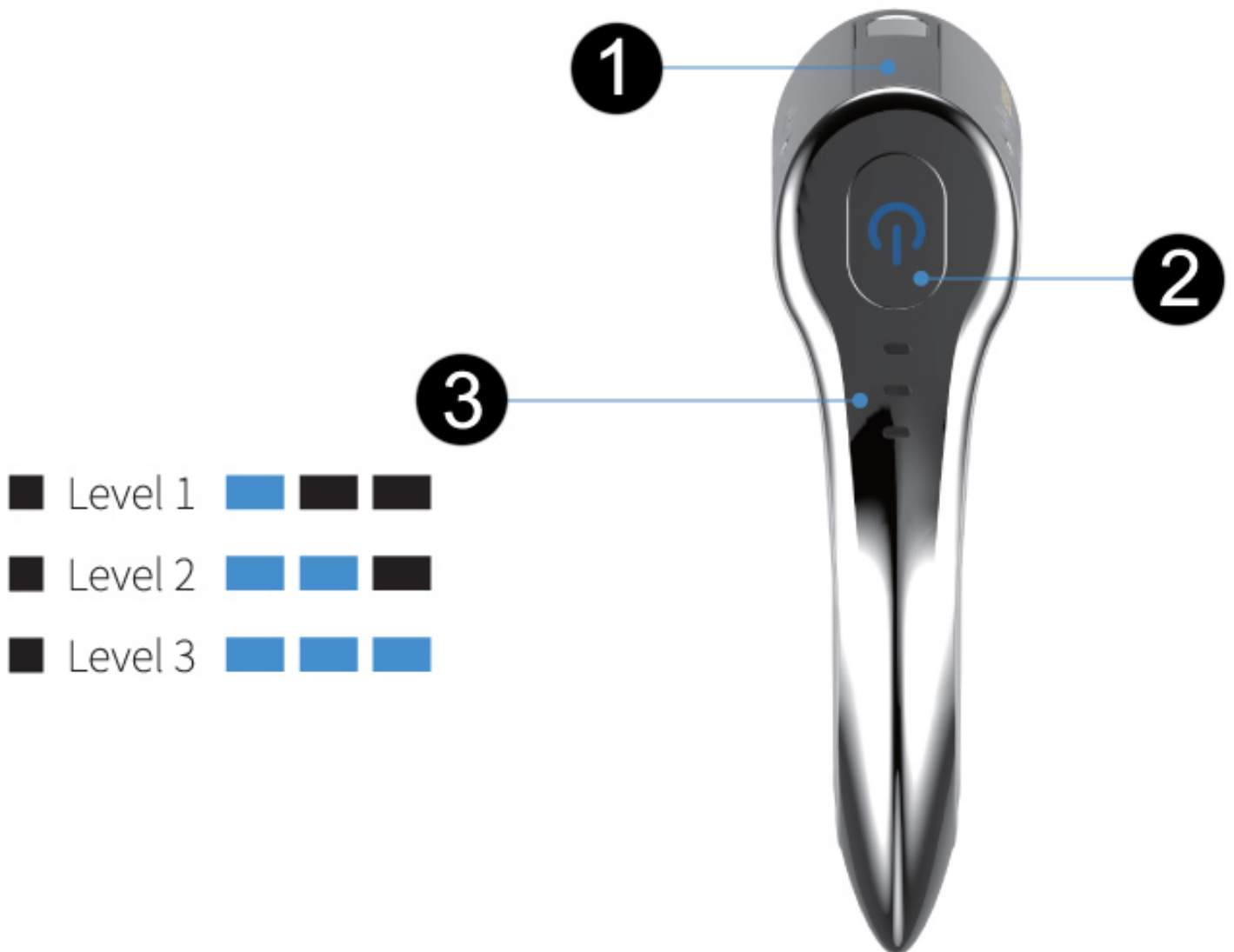
1. Handle - gripping surface

- The device starts automatically when the handle is grasped and the applicator comes into contact with the skin (2).
- If you leave the hand grip, the device stops working.

2. Contact applicator

- The vibration and NMES functions are automatically on when contact is made with the skin, provided that you are also holding the handle (1) with your hand.
- Once the applicator (2) is not in contact with the skin, the device stops working.

DEVICE DESCRIPTION



1. Contact strip

- A contact strip is built into the handle.
- For the NMES function to work properly, your hand must touch the contact surface when grasping the handle.
- Otherwise, the NMES function will not work.

2. ON/OFF button

- Long press the ON/OFF button for 3 seconds to switch on the device.
- With another short press you can gradually change the intensity of the massage.
- Long press the ON/OFF button for 3 seconds to switch off the device.
- If you do not use the device in standby mode, it will automatically switch off after 1 minute.
- The indicator light flashes during charging. Once the battery is charged, the light turns off.

3 levels of intensity for individual massage settings



Battery life up to 14 days

When the battery is fully charged, the device works for 4 to 7 hours. 30 minutes a day for 14 days.



**Standard USB-C
charging input**

HOW TO USE



Use a spray bottle to apply water or any water-based solution to the skin. The main goal is to increase the skin's conductivity so that the electrical micro-pulses can penetrate the skin better and stimulate the muscles.

Press

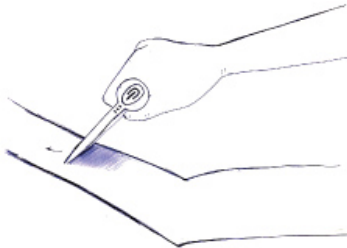


To switch on the device, long press the ON/OFF button for 3 seconds. An audible signal sounds and the device activates standby mode.

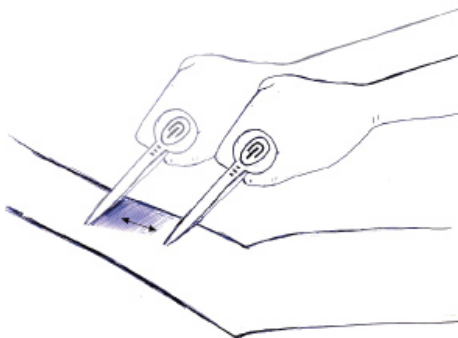
Press



You can adjust the intensity of the massage by briefly pressing the ON/OFF button. A total of 3 levels are available. Always start at the lowest value. You can gradually increase the intensity according to your feeling. Switching the intensity level is accompanied by an audible signal.



Grasp the handle firmly. Always ensure that your hand is in full contact with the guide strap located on the handle. Gradually move the device over your body as shown. The device must always be in full contact with the skin. Otherwise, it will not work properly.



The device is able to locate acupuncture points automatically. As soon as the device hits them, the NMES function is triggered. At that moment, increase the pressure on the skin slightly. Always try to focus on the muscle areas you want to stimulate the most. Massage as needed. The total therapy for one area of the body should not exceed 30 minutes.

Press



Long press the ON/OFF button for 3 seconds to switch off the device. The device will also automatically switch off after 1 minute of inactivity.

NOTES ON THE USE OF THE DEVICE

1. Approach the use of the device responsibly and with maximum concentration. The device has quite a lot of power at the highest level of stimulation in order to achieve the desired results.
2. Always start at the lowest intensity level of 1 and increase gradually. There are a total of 3 levels - lowest (1), medium (2), highest (3).
3. Before use, apply water or other water-based solution to the skin using the dispenser. For NMES to work properly, skin conductivity must be increased. This will multiply improve the therapeutic effect of the device.
4. Electrical pulses are transmitted whenever the applicator is in contact with the skin. Otherwise, the transmission will not take place.
5. The muscles are placed at different depths depending on the body part you are stimulating. Therefore, you may perceive the action of the device differently on different parts.
6. Once you feel the NMES electrical pulses, apply light pressure to the area with the device. This will increase the effectiveness of using the device.
7. Each time you use the device, you will become more familiar with the functions of the device and its effect on the body. This includes changing the angle that the applicator holds with the skin. During use, try to vary this angle to achieve maximum effectiveness.
8. The main prerequisite for the correct use of the device is to close the circuit between the hand holding the device and the body part to be treated. The hand that grasps the handle must also be in contact with the guide strap on the handle. The curved applicator must make full contact with the skin.
9. Always clean and dry the applicator thoroughly after using the device. This will significantly extend the life of the product.
- 10. When the device is in operation, i.e. it is switched on, held in your hand and applied to different parts of your body, you can feel the electric pulses in the hand holding the device. This phenomenon is perfectly standard. An electrical circuit is closed between the body part to be treated, the device, and the hand in which you hold the device. This circuit allows the maximum action of NMES electrical pulses on the body part to be treated. This is in no way can harm your health.**

the most complex device



BATTERY CHARGING

The device has a built-in rechargeable battery. When the battery is low, a light will flash.

Charging procedure:

1. For charging, use only the charging cable included in the package.
2. Plug one end of the cable into the power input on the side of the unit.
3. Connect the other end of the cable to a USB port on your computer or laptop.
4. During charging, the light signal flashes.
5. Once the battery is charged, the light stops flashing.
6. Charging can take up to 4 hours, depending on battery drain.

Do not use a 220V mains adapter for charging. This could cause fatal damage to the battery and void the warranty on the unit.

CLEANING AND MAINTENANCE

Always ensure that the applicator is cleaned after the treatment is completed. Do not use any aggressive cleaning agents. We recommend the use of special disinfectant sprays, which are commonly used in e.g. healthcare or beauty salons for cleaning devices. Normal plain alcohol will also suffice. Moisture must NEVER penetrate directly into the device. It is advisable to remove the application head from the device before cleaning. A cotton swab or dry cloth is ideal for cleaning. No residue of gel, cosmetic cream or serum should remain on the applicator before using the device again. Finally, always check that the applicator is completely dry. Never use any sharp objects that could damage its surface when maintaining the applicator. It could damage the surface of the device.

DISPOSAL OF USED ELECTRICAL AND ELECTRONIC EQUIPMENT



This symbol on products or in accompanying documents means that used electrical and electronic products must not be added to normal municipal waste. For proper disposal, refurbishment and recycling, take these products to the designated collection points. Alternatively, in some European Union or other European countries, you can return your products to your local retailer when purchasing an equivalent new product. By properly disposing of this product, you will help conserve valuable natural resources and help prevent potential negative environmental and human health impacts that could result from improper waste disposal. For further details, contact your local authority or nearest collection point. This symbol is valid in the European Union. If you wish to dispose of this product, please obtain the necessary information on the correct method of disposal from your local authorities or your dealer.

CERTIFICATION

CE The product is approved for use in European Union countries and bears the CE mark. The declaration of conformity and all documentation is available from the importer.

IMPORTER

SANTADRIA s.r.o. , Mojmírovo nám. 75/2 Brno, 612 00
IČO: 29195454 | DIC: CZ29195454

If you have any questions about the product, please do not hesitate to contact us:

Email: mh@santadria.cz

Printing errors, features and changes in technical parameters reserved.

ES DECLARATION OF CONFORMITY

The undersigned, representing the company

SANTADRIA s.r.o.

Mojmírovo nám. 75/2, Brno 612 00, ID: 29195454

hereby declares, as an importer into the EU, that the following product with the trade name

Massage therapy device

marketed under the model name: **BR-1450**

EAN: **8594166116849**

belonging to the **BeautyRelax Hyperblade** brand group of products

is in compliance with the following European standards:

EN 55014-1:2017 EN 61000-2:2019 EN 6100-3-3:2013+A1:2019

EN 61000-4-2:2009 EN 61000-4-3:2006+A1:2009+A2:2010

EN 61000-4-4:2012 EN 61000-4-5:2014+A1:2017

EN 61000-4-6:2014/AC:2015, EN 61000-4-11:2004+A1:2017

Details are given in test report number: DL-2019103502C

The device is not a medical device. In case of use by several persons, special care must be taken with the hygiene standards for devices of similar type.

Based on compliance with these directives, the product has been CE marked.

The product also complies with RoHS Directive 2002/95/EC (RoHS). All materials are health-safe. They do not contain any heavy metals such as cadmium and other toxic substances.

For safe use, it is essential to strictly follow the instructions in the instruction manual included in the package.



.....
Martin Hrbek, Managing Director

Place of publication: Brno Day: 20.6.2020