

USER MANUAL

Cosmetic face device
BeautyRelax **BR-1490**

POREMAX HOT&COLD



CONTENT:

NOTICE	4
MAIN ADVANTAGES	5
DEVICE SPECIFICATIONS	5
TECHNICAL PARAMETERS	5
DEVICE INTRODUCTION	6
VACUUM SUCTION SYSTEM	6
HEAT AND COLD THERAPY	7
EFFECTS OF HEATING THERAPY	7
HEAT	8
COLD	8
EFFECTS OF COLD	8
PROBLEMS OF BLACK DOT CREATION	9
EFFECTS OF EXTERNAL NEGATIVE EFFECTS	10
PACKAGE CONTENTS	11
DEVICE DESCRIPTION	12
BEFORE USING	13
BEFORE FIRST USE	13
PROFESSIONAL TREATMENT IN 3 STEPS	14
INTENSIVE AND HIGHLY FRIENDLY SUCTION	15
VACUUM SUCTION 1-2-3	16
DISTRIBUTION OF VACUUM SUCTION POWER	17
USE OF INDIVIDUAL APPLICATORS	18
CHANGEABLE APPLICATORS	19
HOW TO USE	20
ACHIEVED EFFECTS OF SKIN CLEANING	21
METHOD OF TREATMENT OF THE FACE AND NECK	22
FREQUENTLY ASKED QUESTIONS AND ANSWERS	23
BATTERY CHARGING	24
CLEANING AND MAINTENANCE	24
DISPOSAL OF USED ELECTRONIC EQUIPMENT	25
CERTIFICATION	25
IMPORTER	25
DECLARATION OF CONFORMITY	26

Dear customer, thank you for your trust in the purchase of our product. Before using for the first time, please read carefully all the detailed information in the operating instructions. Pay special attention to safety instructions. Use the device exactly as instructed. All these steps will contribute to the maximum use of all functions of the device. In this guide, we will try to bring you as close as possible to the technologies used and how to make the best use of the device.

If you encounter any ambiguities while reading the instructions, do not hesitate to contact us at the email address: mh@santadria.cz

Keep the instructions for use in a safe place for future reference.

NOTICE

- Before commissioning for the first time, read these operating instructions, view all illustrations and keep them for future reference.
- If your skin is affected by a serious skin condition, do not use the appliance. Consult your GP for first time use.
- The device is primarily intended for your personal use. Don't share it with family or friends. If the device is used by more than one person, pay special attention to the principles of hygiene.
- Never operate the appliance if it is damaged, does not work properly or has fallen into water.
- To prevent electric shock, do not touch the inside of the unit if it is broken.
- If the unit is dropped, it may be damaged. In this case, do not continue to use the device and contact the dealer's service department.
- Do not use the appliance near water or in places with high humidity (bath, shower, swimming pool, etc.).
- The appliance is not washable. It must not be immersed in water or under running water.
- Do not leave the device unattended. Always switch off the appliance thoroughly after each use.
- If the unit has been moved from a very cold to a very warm environment, wait at least 3 hours before using it.
- The appliance is not intended for use by children or persons whose physical or mental condition does not allow the appliance to be used safely.
- Do not place or use the appliance on hot heat sources (radiator, stove, fire, etc.)
- Do not attempt to disassemble or repair the device yourself.
- Store the device in a dry environment. Try to protect it from dust.
- Do not expose the device to direct sunlight.
- The distributor is not liable for damage caused by improper use contrary to the instructions in these operating instructions. He is not responsible for the consequences caused by non-compliance with the safety instructions.
- The distributor is not liable for any damage to health or property caused by other uses.

MAIN ADVANTAGES

- Non-invasive treatment (the device does not penetrate directly through the skin).
- Treatment without any discomfort.
- No unwanted permanent changes in skin pigmentation.
- Cosmetics can be used immediately after the procedure.

DEVICE SPECIFICATIONS

- Highly effective mechanical skin cleansing.
- Improved blood circulation to the skin.
- Stimulation of collagen and elastic fibers.
- The skin has a smooth and fresh impression.
- Heat increases the effectiveness of the treatment by opening the skin pores.
- Cold at the end of the treatment pleasantly soothes the skin.

TECHNICAL PARAMETERS

- 5 levels of vacuum suction intensity setting (up to 70kPa).
- LCD display.
- Indication of battery status and vacuum suction intensity.
- 5 interchangeable skin treatment applicators.
- Power supply: USB cable (included).
- Charging voltage: 5V, Power: 4W.
- Battery capacity: 1200mAh.
- Charging time: approximately 4 hours.
- Usage time: approx. 2 hours.
- Dimensions: height 19x4x4.5cm.
- Weight: 154g.



DEVICE INTRODUCTION

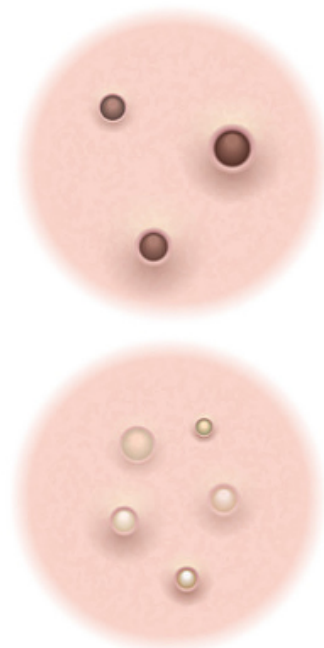
The BeautyRelax Poremax hot & cold cosmetic device of the iLift series is a practical aid for regular skin care. It combines several technologies to achieve the best possible results. You can look forward to cleansing the skin with vacuum suction complemented by heat therapy. Exclusive different types of treatments in one device. LCD display, 5 interchangeable applicators, 5 levels of intensity adjustment. You will simply fall in love with the BeautyRelax Poremax hot & cold device with high utility value!

VACUUM SUCTION SYSTEM



Every day, our skin is exposed to a number of factors that have a negative effect (dust, smog, bacteria, residual makeup particles, moisture). The formation of sebum in combination with impurities and dead skin cells clogs the skin pores and manifests itself in the formation of black dots or pimples with white "caps". Environment for the formation of bacteria and subsequent inflammation. The main prerequisite for beautiful and healthy skin is regular care.

The Poremax hot & cold cosmetic device thoroughly cleanses the skin. In the case of blackheads and pimples, it helps to remove them. The application head absorbs the skin and the edge of the applicator removes dirt, black dots and unsightly white caps from the surface. Unpleasant hand squeezing, which causes significant redness and skin irritation, is the end! Surface pigment spots and pores are softened. The Poremax hot & cold cosmetic device is highly effective, but at the same time gentle on the skin!



HEAT AND COLD THERAPY

The Poremax hot & cold cosmetic device of the iLift series is equipped with a special flat applicator, which is able to adjust the temperature as needed. The temperature will change in a few seconds. You can set heating or cooling without a significant time delay. Heat therapy is a very practical function that you use at the beginning and end of the treatment.

EFFECTS OF HEATING THERAPY

Exposure to heat or cold on the skin has specific effects. The base is a source of heat or cold, which is applied to the skin. Within a few moments the temperature on the surface of the skin changes. If the device has both functions, the change from heat to cold and vice versa takes place within a few seconds. Exposure to heat is usually the first step after removing the skin. Just treat for a few minutes.) The effect of cold on the skin significantly affects the function of the lymphatic system of the face and its metabolism. The effect of the cold usually ends the skin treatment.



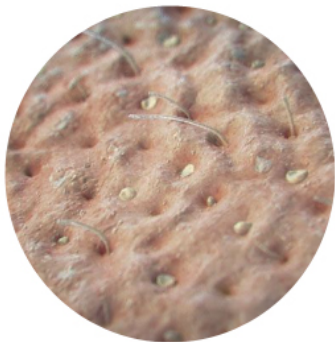
natural detoxification of the
organism



pore reduction



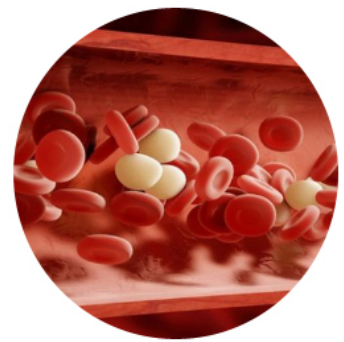
maintaining natural humidity



release skin pores



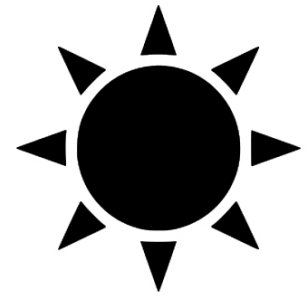
helps to thoroughly cleanse
the skin



support blood circulation

HEAT

The main effect of heat on the skin is the opening of skin pores. This step is used in the cosmetic studio after skin make-up removal. Whatever other procedure follows. Expansion of skin pores is an elementary basis for deep cleansing of the skin. Furthermore, the pores are able to absorb nutrients from cosmetics deeper into the skin. Beauticians most often use a steamed towel. You as a real professional beauty device BeautyRelax.



COLD

Conversely, cold generally has soothing effects on the skin. We use a cold towel at home if we have a high temperature or the skin is red and irritated. Among other things, the cold tightens the skin pores. The BeautyRelax cosmetic device will be appreciated especially by a user with very sensitive skin sensitive to external stimuli. If the skin becomes red, as is the case after a cosmetic treatment, the cold soothes the skin and contributes to the return of skin color back to normal.



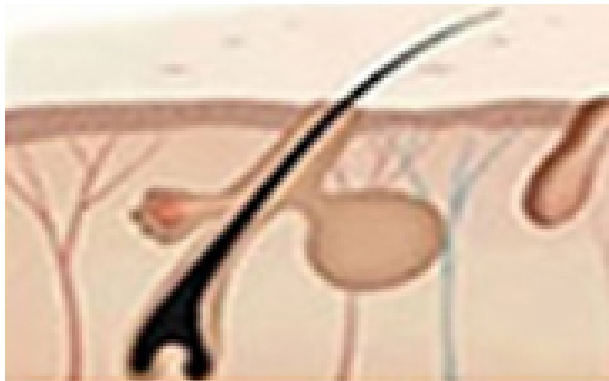
EFFECTS OF COLD

- soothing of the skin at the end of the treatment.
- anti-inflammatory effect
- suppression of swelling
- activation of self-healing skin processes



PROBLEMS OF BLACK DOT CREATION

One of the main causes of blackheads is clogging of skin pores with sebum or dead skin. The black color of the clogged head is not an impurity. It is the result of oxidation after exposure to sebum and dead skin cells to the environment. The cosmetic device with vacuum suction is one of the most effective methods of removing blackheads with the least possible skin irritation.



Grease from the sebaceous glands is released along the hair follicles.



The sebaceous glands relax more or less grease according to various factors.



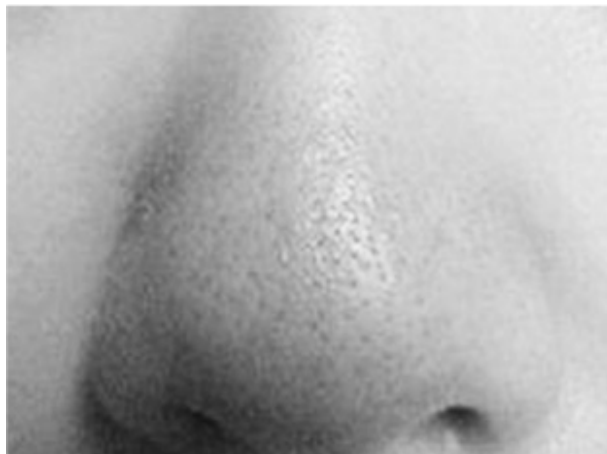
The grease turns white.



The grease is exposed and oxidized in the air with a large number of black dots.

EFFECTS OF EXTERNAL NEGATIVE EFFECTS

Our skin is exposed to a number of external factors that affect the quality and aging of our skin to varying degrees. Sun, dust, little sleep, poor lifestyle, insufficient regular cleansing of the skin from makeup.



Enlarged pores, increased incidence of blackheads, ineffective skin care



Increased occurrence of bacteria, increased skin sensitivity, greater susceptibility to acne

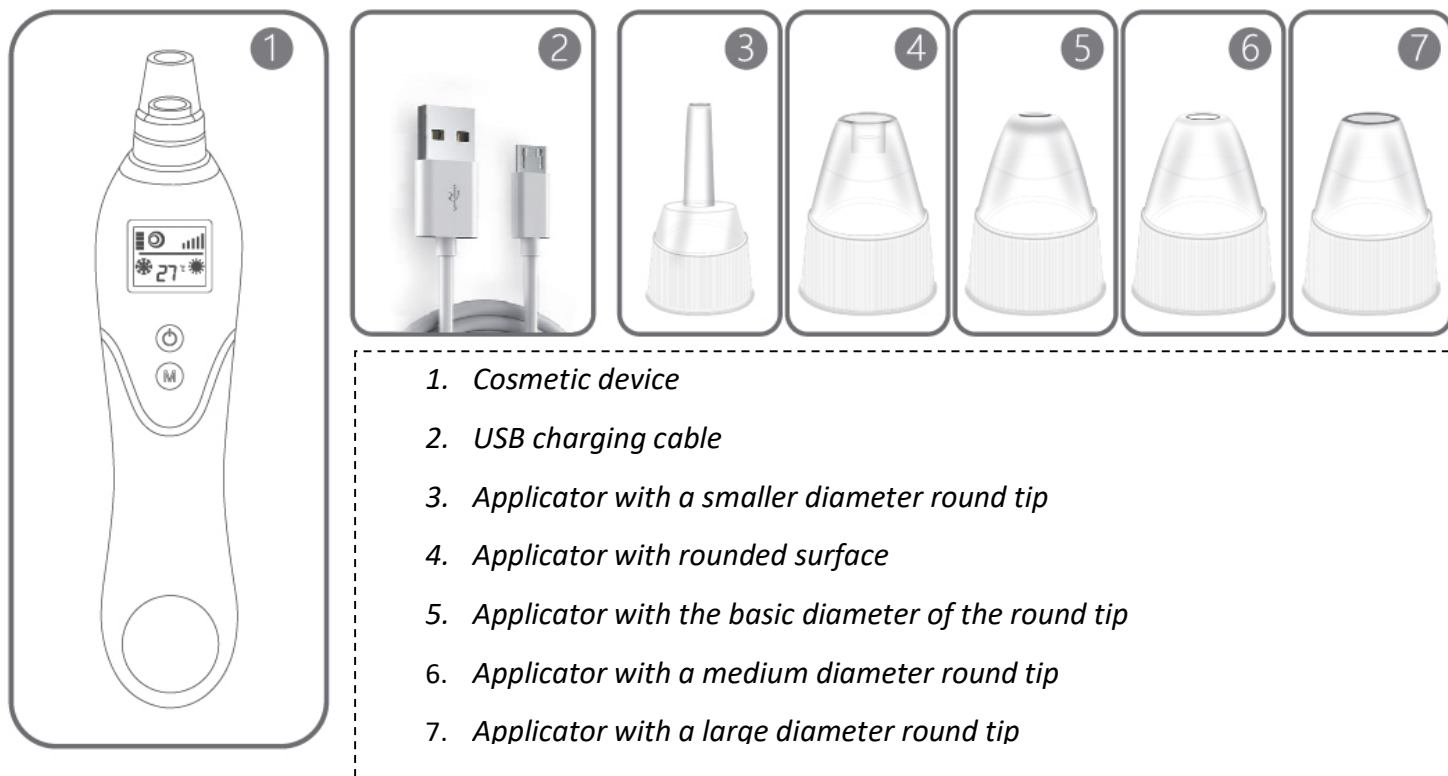


Increased sebum production, oily skin that is very difficult to cleanse

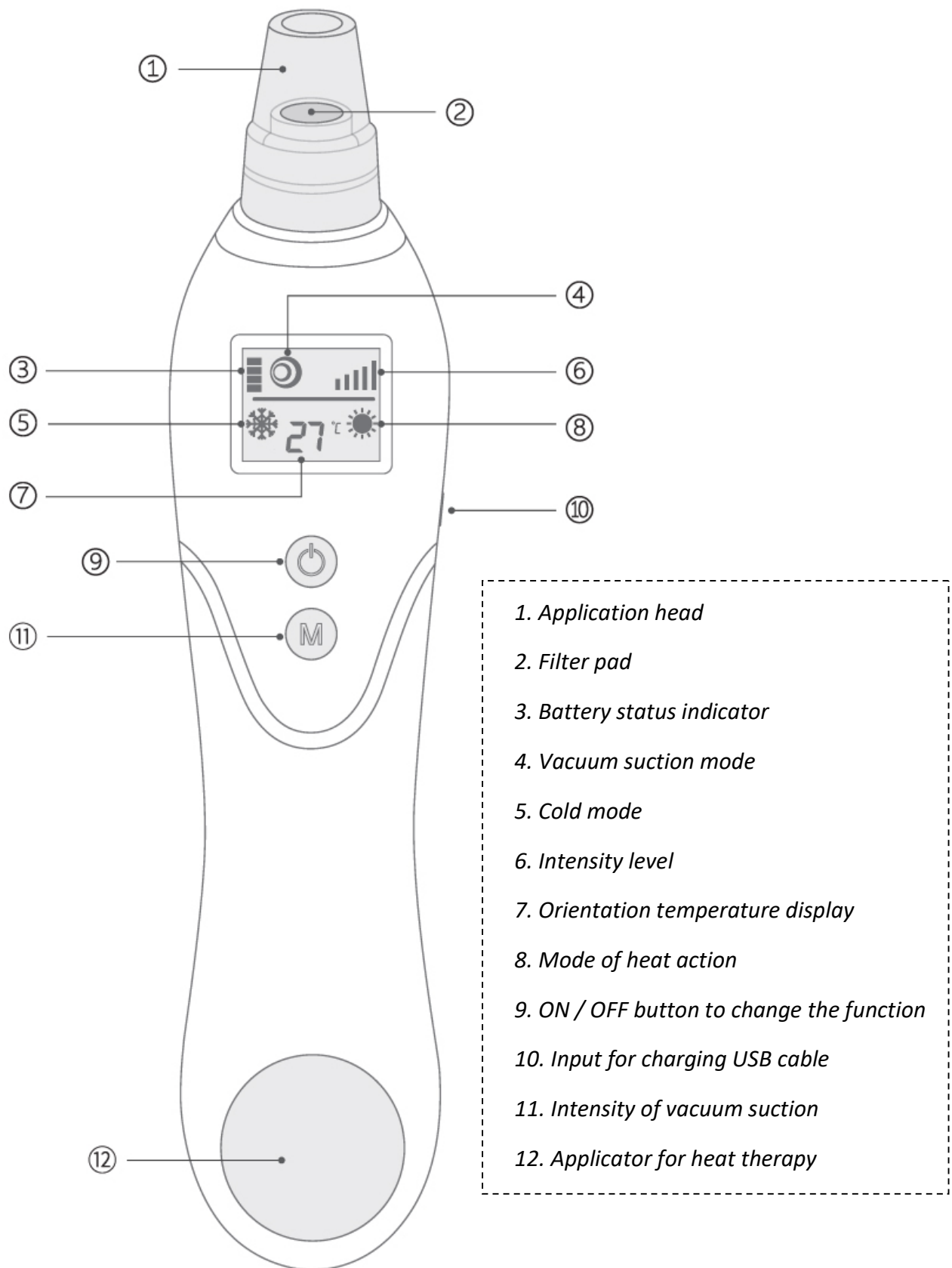


Clogged pores with dirt from the residue makeup with a reduced skin cleansing effect

PACKAGE CONTENTS



DEVICE DESCRIPTION



BEFORE USING

Before treatment the skin itself with the device, degrease the skin and make-up. Wait until the skin is completely dry. There must be no traces of moisture on the skin before use. Before using the device for the first time, try its application, eg on the forearm. Wait approximately 1 hour for the skin to react negatively when using vacuum suction.

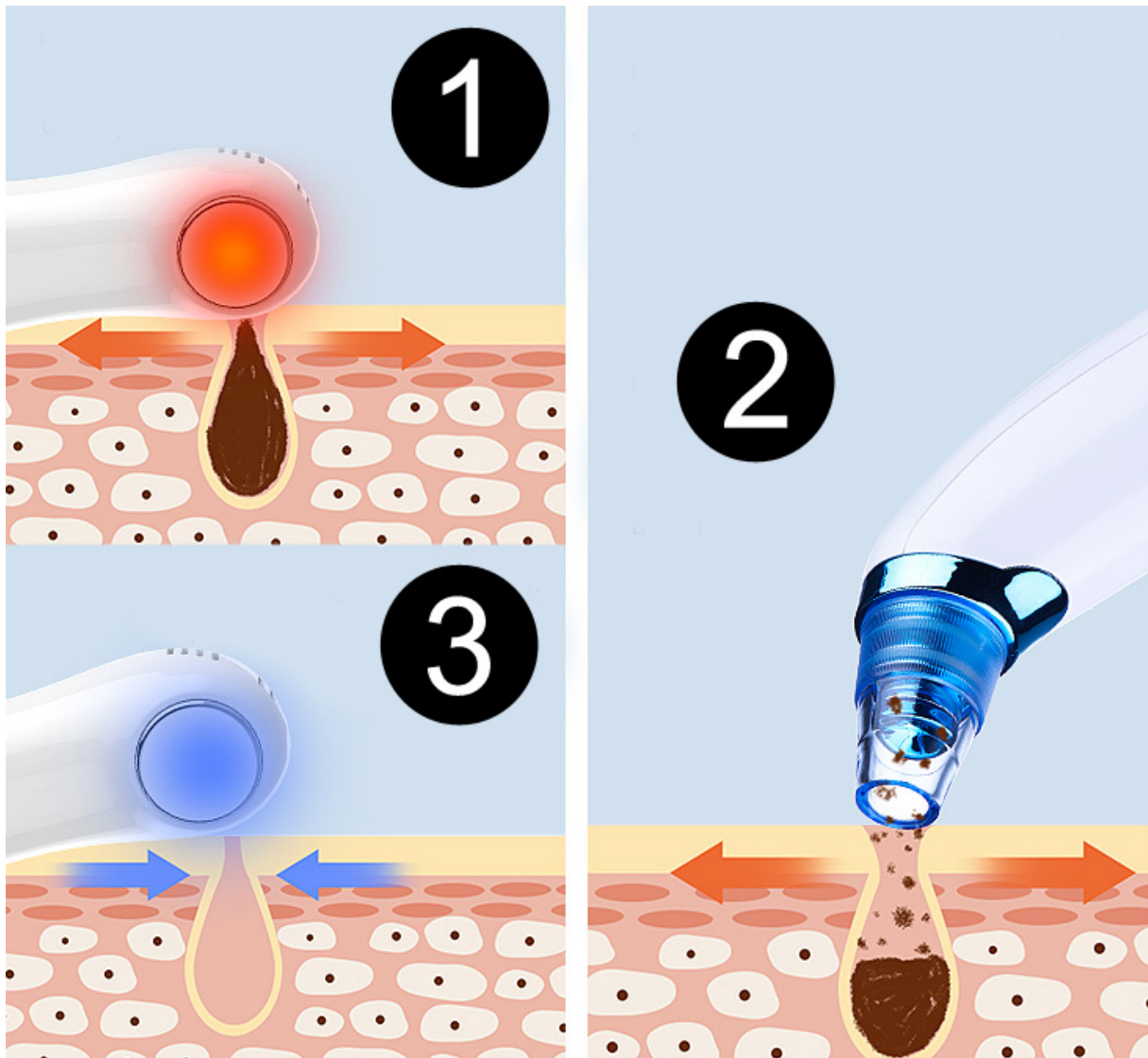
BEFORE FIRST USE

- Do not use the device on severely scarred skin.
- Do not use the device if you suffer from eczema or other skin diseases.
- If you have sensitive skin, use the appliance with caution.
- Do not apply excessive force to the skin.
- After treatment, the skin may be slightly reddish. This is a temporary effect that should disappear within a few tens of minutes.
- After treatment, it is recommended to use a nourishing mask, cream or night cream. Be sure to use sunscreen before going outside (in case of strong sunlight).
- After a facial treatment, you can apply makeup almost immediately after soothing your skin as needed.
- Be sure to insert the filter pads into the suction port before attaching the application head. Otherwise, the device will be damaged if dirt is sucked in.



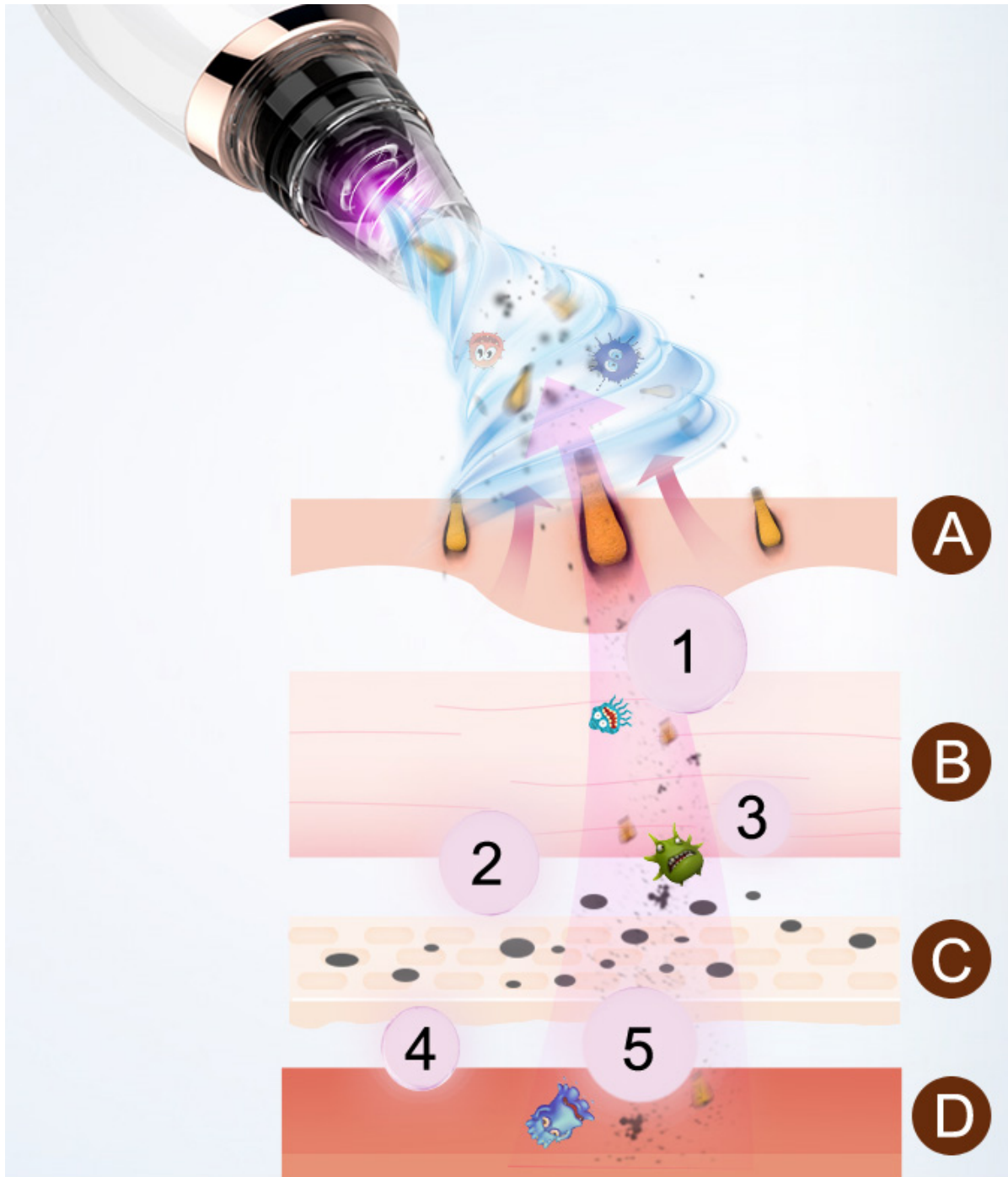
PROFESSIONAL TREATMENT IN 3 STEPS

Using the device is much easier than you can imagine. The device is multifunctional. It's the same as having 3 different devices at once. The treatment will not take you too much time. Therefore, it is easy to get used to the routine treatment that is necessary to maintain healthy and beautiful skin. 3 different types of devices in one, 3 different types of skin treatments with a high degree of effect!



1. Opening skin pores is a basic prerequisite for really good skin cleansing. You can easily warm up your skin with the applicator. Blood circulation in local areas of facial treatment will be improved.
2. The variability of the vacuum suction setting power acts on the skin as a vacuum cleaner. All microscopic impurities, make-up residues, dead skin residues are completely removed.
3. The skin is red and slightly irritated after mechanical cleansing of the skin. You set the cold mode. With the help of the applicator, you will cool and soothe your skin beautifully. The skin pores contract to a normal state.

INTENSIVE AND HIGHLY FRIENDLY SUCTION



(1) black dots

(2) dead skin residues

(3) make-up residues

(4) grease

(5) bacteria

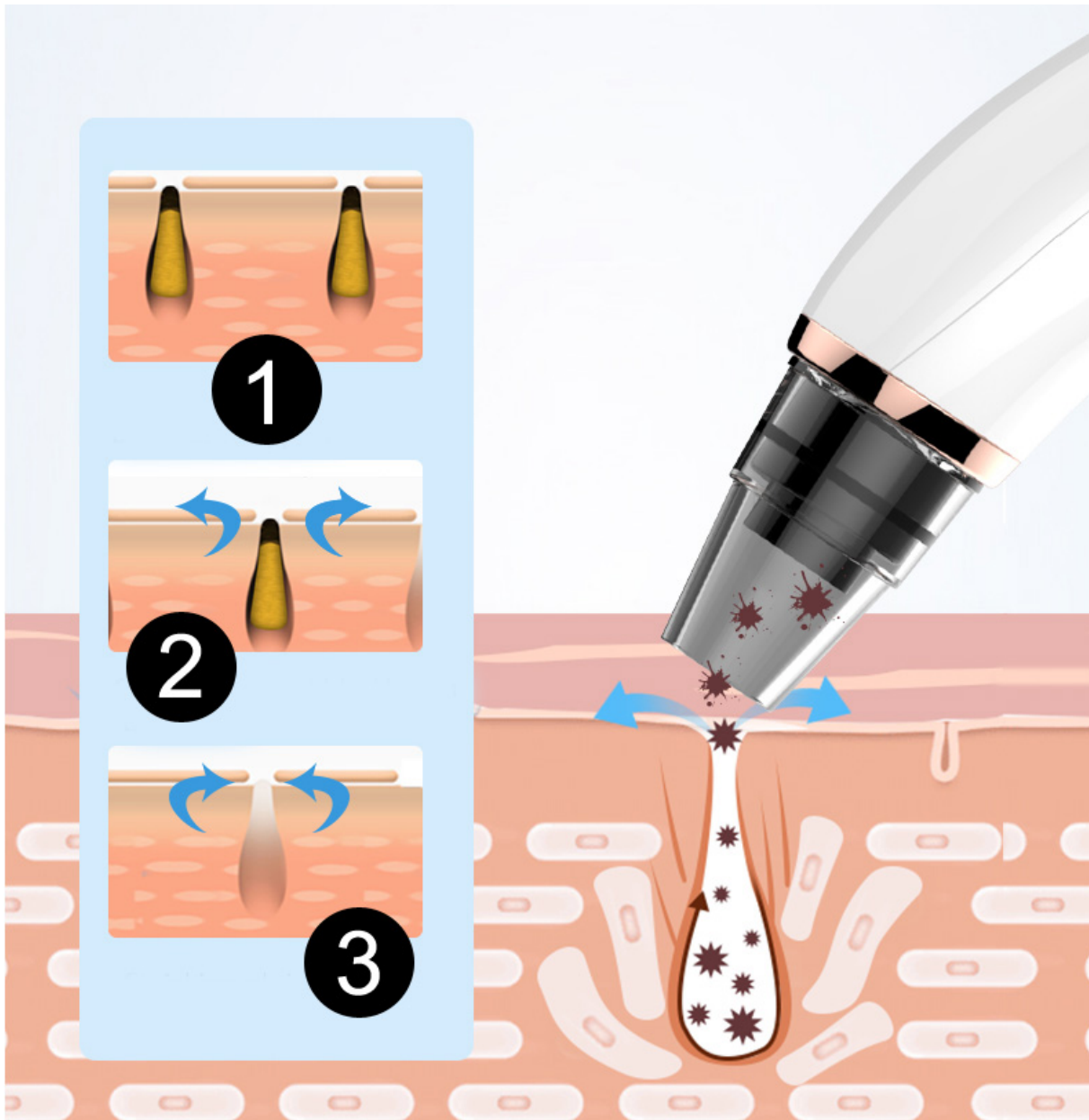
(A) skin surface

(B) cornified skin

(C) basal layer

(D) dermis layer

VACUUM SUCTION 1-2-3



1. OPENING: pore opening, black dots.

2. SUCTION: vacuum blackheads and acne.

3. SHRINKAGE: shrinks pores and soothes the skin.

DISTRIBUTION OF VACUUM SUCTION POWER

You can adjust the vacuum suction power individually according to your needs. If you have very sensitive skin and the pollution is not significant, use a lower power. If your skin is resistant and heavily soiled, take advantage of higher performance. By using it regularly, you will learn the power settings very quickly. Always try to choose the right performance compromise to make the treatment effective but comfortable for you. Expect the skin to be more irritated and reddened at higher performance. He will thus need more time to recover.



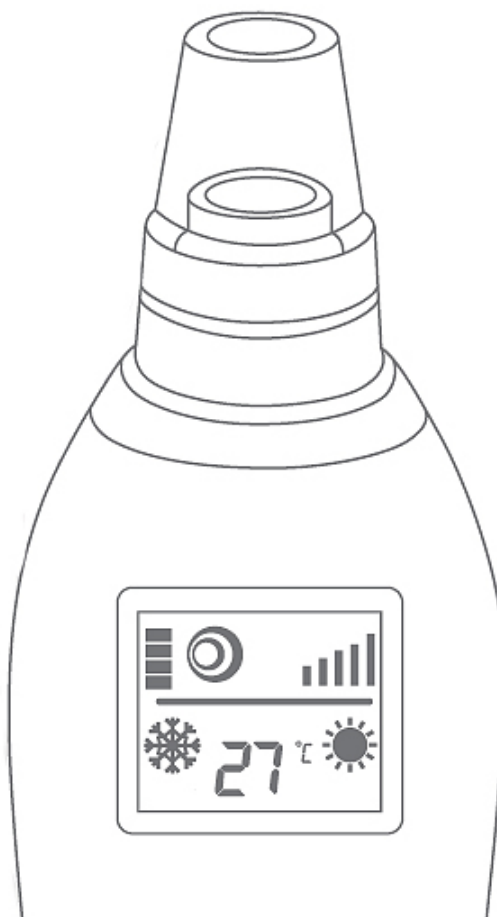
- (1)** 40KPA - suitable for highly sensitive skin
- (2)** 50KPA - suitable for normal skin
- (3)** 60KPA - suitable for oily skin
- (4)** 65KPA - suitable for combination skin
- (5)** 70KPA - suitable for very resistant and dirty skin

USE OF INDIVIDUAL APPLICATORS

We each have a different face size, shape and different sensitive skin. The differences are also in the current condition of the skin. Each of us is original. The package includes 5 different applicators to make the use of a cosmetic device as versatile as possible. The instructions for the individual applicators are only general. In practice, you can try for yourself which combination of applicators is most suitable for you. It may happen that in the long run you will not use some at all.



Use the applicator with a round surface for gentle mechanical cleansing of the skin. It thoroughly removes all impurities from the skin. Other applicators are terminated with a hole of different diameter. The smaller the hole, the smaller the vacuum. In practice, this means that a smaller orifice concentrates a larger vacuum thrust on a smaller area. You can adjust the vacuum suction power not only with the button on the device, but also with a suitable choice of applicator. Use applicators with different hole diameters to remove blackheads, support local facial blood circulation or massage lifting fine facial wrinkles.



CHANGEABLE APPLICATORS



Applicator with a smaller diameter round tip

Designed for very small treatment areas with a larger number of folds. Ideal for deep cleansing of sensitive skin or parts of the face with blackheads.



Applicator with a round surface for cleansing the skin

Cleansing from dead skin cells and residues. Except for areas with very thin skin (eg temples) can be used all over the face.



Applicator with a basic diameter of a round tip

Designed for the treatment of the T-zone of the face. In cases of oily skin. Lifting effect and effective massage for intense blood circulation.



Applicator with a medium diameter round tip

Optimal for lips, nose and especially nose folds. Can be used to cleanse the skin. Great for eliminating fine facial wrinkles.



Applicator with a large diameter round tip

Suitable for forehead or nose. Ideal for use in drawing black dots. You can use it for facial or décolleté treatments.

HOW TO USE

- 1.** Switch on the appliance by pressing and holding the ON / OFF button **(9)** for at least 3 seconds. The display lights up. The display shows basic information. By pressing the ON / OFF button **(9)** again, you can set between the individual skin treatment modes (vacuum suction, cold, heat). Activation of a specific mode is signaled by the corresponding icon **(4)** vacuum suction, **(5)** cold action, **(8)** heat action. The temperature display is very indicative. Always check the temperature of your skin applicator with your hand before applying it.
- 2.** Always make sure that you have inserted the filter pad into the suction area before attaching the appropriate applicator. Attach your chosen applicator for the skin suction mode using vacuum suction. The air stream will flow through the tampon and any dirt will be trapped in it. Failure to do so could result in suction of dirt and damage to the unit.
- 3.** Use the M button **(11)** to set the vacuum suction force (level 1,2,3,4,5). In heat (heating) mode, you can set the temperature level (level 1,2,3,4,5).
- 4.** The device switches off automatically after 9 minutes.
- 5.** You can switch off the device at any time by long pressing the ON / OFF button **(9)**.

ACHIEVED EFFECTS OF SKIN CLEANING



METHOD OF TREATMENT OF THE FACE AND NECK



FOREHEAD: move away from the center facing the edge, gradually cover the entire



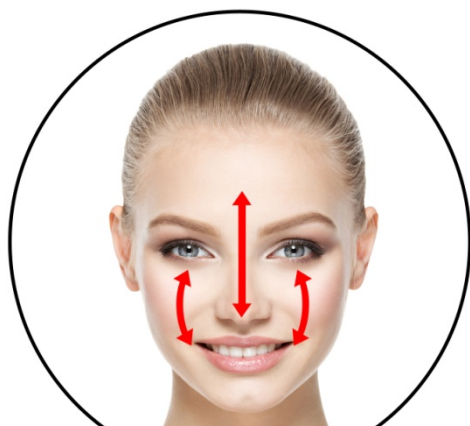
NOSE: move from the forehead around the nose to the face, from top to bottom



FACE: move your face in the direction bottom to top



CHIN: Move from the tip of the chin along the contours of the face, from bottom to top



T zone: move from forehead to the tip of the nose and face, movement in both directions



Neck: Move from the chin towards the ear and then down to the neck

FREQUENTLY ASKED QUESTIONS AND ANSWERS

Is it necessary to insert a filter pad at each use?

A cotton swab creates the necessary barrier between the dirt and the electronics of the device. If you do not use the swab, dirt may enter the device and damage it. If you purchase replacement filter pads, contact your dealer / distributor. If the device is used by one person, it can be used more than once. If the device is used by more than one person, it is necessary to replace the filter pad after each skin treatment.

What is the optimal length of an individual skin treatment?

For skin cleansing, the optimal length should be in the range of 15 to 30 minutes. It depends on how carefully you pay attention to all parts of the face, or the chin or décolleté. Start with a shorter treatment time and gradually lengthen as your skin responds to the device. Not always the longer the better. If you have more sensitive skin, start with a shorter duration of treatment. The next time you use the device, you can gradually increase the duration of the treatment.

Is skin treatment a consequent limitation?

After cleansing the skin, the skin may become slightly red. This is a completely natural effect. The blood circulation and lymphatic system of the face are supported. The color should subside in the order of tens of minutes. The skin returns to normal.

Is using the device painful?

Although the cleansing is based on the principle of suctioning the upper layer of dead skin, you will not feel any unpleasant feelings. Thanks to the vacuum suction, you will perceive cleansing the skin as a pleasant relaxing massage. If you have very sensitive skin, set a lower vacuum suction power. Adjust your performance emotionally according to how your skin will react.

Why is this skin treatment sometimes called rejuvenation?

Rejuvenation starts the growth of new, healthy and elastic skin cells, resistant to external influences. This restores the biological time of the skin and slows down its further aging.

Is the device suitable for my skin?

Cleansing is suitable for all skin types. The restriction only applies to cases where the skin is affected by a significant skin disease. Special care must be taken by people with highly sensitive thin skin to touch. Skin relief also plays an important role. If there are a large number of scars or non-standard irregularities (warts, skin growths) on your skin, this can complicate the treatment. It is recommended to avoid these places with an applicator.

Does heat / cold make any real sense at all?

Definitely yes. It is no coincidence that heat therapy is combined with a mechanical skin cleanser. Years of experience in aesthetic studies have led engineers to develop a device that would offer a rapid transfer of heat and cold. Warm skin cleanses much better. Although the mechanical cleansing of the skin is gentle, there is a slight irritation and natural warming. The cold application head pleasantly cools the skin and gets it back in comfort. Recently, the function of heat therapy in cosmetic devices has been very popular.

BATTERY CHARGING

The device has a built-in rechargeable battery. Use only the included charging cable for charging. When the battery status indicates a single bar, charge the battery.

Caution: Do not connect the charging cable to a 220V AC adapter. This could damage the battery. Use only the USB port of a computer or laptop as a power source.

Charging procedure:

1. Use only the included charging cable for charging.
2. Connect one end of the cable to the power input of the device.
Connect the other end to a USB port on a computer or laptop.
3. The battery icon flashes while charging.
4. When the battery is charged, the battery icon stops blinking.



CLEANING AND MAINTENANCE

Disconnect the applicator from the device before cleaning. You can wash the applicator itself with a stream of lukewarm water. To clean the narrow spaces of the applicator, it is ideal to use a cotton swab to clean the ears. Do not use any aggressive cleaning agents. We recommend the use of special disinfectant sprays, which are commonly used, for example, in healthcare or beauty salons for cleaning tools. Classic pure alcohol will also suffice. A cotton swab or dry cloth is ideal for cleaning. Finally, always check that the application head is completely dry. Under no circumstances use any sharp objects that could damage the applicators or the device.

DISPOSAL OF USED ELECTRONIC EQUIPMENT



This symbol on the products or in the accompanying documents means that the used electrical and electronic products must not be added to ordinary municipal waste. For proper disposal, recovery and recycling, transfer these products to designated collection points. Alternatively, in some countries of the European Union or other European countries, you can return your products to your local retailer when buying an equivalent new product. Proper disposal of this product will help to conserve valuable natural resources and help prevent potential negative environmental and human health impacts, which could be the consequences of improper disposal of waste. Please contact your local authority or nearest collection point for further details. This symbol is valid in the European Union. To dispose of this product, ask for the proper disposal information from your local authorities or from your dealer.



This product complies with the requirements of the EU directives on electromagnetic compatibility and electrical safety.

Importer

SANTADRIA s.r.o. | Mojmírovo nám. 75/2, 612 00 Brno
company ID: 29195454 | VAT number: CZ29195454
contact email: mh@santadria.cz

DECLARATION OF CONFORMITY

Signed below, representing the company

SANTADRIA s.r.o.

Mojmírovo nám. 75/2, Brno 612 00, IČ: 29195454

hereby declares, as an importer in the EU, that the product with the trade name below is listed below

Cosmetic face device

launched under the model name: **POREMAX HOT&COLD BR-1490**

EAN: **8594166116917**

belonging to the BeautyRelax product group **BeautyRelax**

complies with the following European standards:

EN55014-1:2017

EN61000-3-2:2014, EN61000-3-3:2013

EN55014-2:2015

EN61000-4-2:2009, EN61000-4-3:2006+A1:2008+A2:2010

EN61000-4-4:2012, EN61000-4-5:2014

EN61000-4-6:2014, EN61000-4-11:2004

Details are described in the certificate Nr. LST180268006E

Based on compliance with these guidelines, the product has been CE marked.

The product also complies with the RoHS Directive 2002/95 / EC (RoHS). All materials are not harmful to health. They do not contain any heavy metals, such as cadmium and other toxic substances.

For safe use, it is necessary to strictly follow the instructions given in the operating instructions that are included in the package.



Martin Hrbek, director

Issued: Brno On: 15.6.2020