

USER MANUAL

Massage vacuum device

BeautyRelax model BR-2460

VACUFORM EXCLUSIVE



CONTENT:

PURPOSE OF USE	4
NOTICE	4
CONTRAINDICATIONS	5
PROHIBITED AREAS OF TREATMENT	5
INTRODUCTION OF THE DEVICE TECHNOLOGY	6
LOCAL VACUUM MASSAGE	6
VACUUM INTENSITY LEVELS	7
MAIN ADVANTAGES	7
WHAT YOU CAN EXPECT BY USING IT	7
TECHNICAL PARAMETERS	7
PACKAGING CONTENT	7
DEVICE DESCRIPTION	8
CONTROL PANEL DESCRIPTION	9
FILTER ROLLER REPLACEMENT	10
USE OF THE DEVICE	11
HOW TO USE THE DEVICE CORRECTLY	13
PERMITTED TREATMENT AREAS	15
LENGTH OF TREATMENT	16
CLEANING AND MAINTENANCE	16
COLOURING OF THE FLAG	16
RECHARGING THE BATTERY	16
SELECTION OF THE APPLICATION HEAD	17
IMPORTANT SAFETY NOTICES	18
SPEED OF MOVEMENT ON THE SKIN	19
RELATED RECOMMENDED DEVICES	20
FREQUENTLY ASKED QUESTIONS AND ANSWERS	21
A FEW SENTENCES IN CONCLUSION	23
CLEANING AND MAINTENANCE	24
DISPOSAL OF USED ELECTRICAL EQUIPMENT	24
CERTIFICATION	24
IMPORTER	24
ES DECLARATION OF CONFORMITY	25

Dear customer, thank you for your trust in purchasing our product. Please read all the detailed information in the instruction manual carefully before using it for the first time. Please pay particular attention to the safety warnings. Please use the device exactly as instructed. All of these steps will help to maximize the use of all functions of the device. In this manual we will try to give you the best possible idea of the technology used and how to use the device to best advantage.

If you encounter any uncertainties while reading the instructions, please do not hesitate to contact us at the following email address: mh@santadria.cz

Keep the instructions for use carefully for later reference.

PURPOSE OF USE

Vacuum vacuum massage has long been one of the most used and popular massage methods of professional masseurs and rehabilitation centers. It has gained popularity due to its beneficial effects on the lymphatic system. The Vacuform massage device brings the method of body treatment by professionals to you in the comfort of your own home. The Vacuform Exclusive is designed for local massage of selected parts of the body. The massage is carried out on the principle of vacuum. You can regulate the strength of the vacuum yourself. The treatment is non-invasive, safe and painless. Long-term use contributes significantly to improving the function of the lymphatic system. The Vacuform **is not a medical device**. It belongs to the category of non-invasive massage devices.



NOTICE

- Please read these instructions carefully before first use
- Do not use the device in an environment where smoke, dust, dirt or water may be present
- It is forbidden to use the device in the bathroom
- Follow exactly the length and method of treatment
- Do not combine the device with a similar device from another manufacturer
- If you feel abnormal in any way during use, turn off the device and consult your doctor
- When not in use for a long time, do not leave the device connected to the USB power cable
- Do not bend the power cord; do not place sharp, heavy or wet objects on the device
- Avoid contact with objects such as candles, cigarettes, spirits while using the device
- If the device has any technical problems, please use the contact form at www.beautyrelax.cz
- Do not attempt to disassemble or repair the unit yourself - you could injure yourself and void the warranty
- If any of these situations occur, never use the device:
 - the power cable is damaged
 - water has entered the device
 - a heavy object has fallen on the device or it has fallen from a great height to the ground
- Do not use the device in close proximity to other electrical equipment
- Ensure that the device and all its components are always dry
- After each use, clean the device with a cloth gently dampened in the alcohol solution and dry completely with another cloth

CONTRAINDICATIONS

Under no circumstances should the device be used by persons suffering from any of the following conditions:

- In a state of high fever
- Serious skin diseases
- Heart disease, pacemaker, hypertension
- Vascular disorders or arteriosclerosis
- Persons taking anti-clotting medication
- Patients who have undergone surgery with transplantation
- Persons who require constant supervision may use the device only after consulting a physician



Recommendation: *the Vacuform Exclusive Massager has an effect on the lymphatic system and blood circulation. If you have a medical diagnosis with poor lymphatic system function, heart disease, or suffer from high blood pressure, consult your doctor for first use of the device.*

PROHIBITED AREAS OF TREATMENT

- Head
- Neck (front and back)
- The area where the heart is
- Armpits
- Elbow
- Wrist
- Knees
- Ankle
- Palms
- Feet
- Knee area
- Spine



INTRODUCTION OF THE DEVICE TECHNOLOGY

BeautyRelax Vacuform Exclusive Vacuum Drainage Massager. High-performance tool for intensive suppression of cellulite manifestations. A truly functional vacuum vacuum drainage. Immediate improvement of blood circulation and metabolism of the treated area. Completely non-invasive nature of the treatment. Practical heating function for local circulation support. 3 interchangeable application heads. Adapts to the size of each body part to be targeted. 3 levels of vacuum suction intensity available. Orange skin doesn't stand a chance against the Vacuform Exclusive!



LOCAL VACUUM MASSAGE

Lymphatic massage is one of the most effective ways to reduce the appearance of cellulite. The rhythmic kneading of the muscles ensures the proper flow of lymph in the body. It contributes to the removal of impurities from the blood. Through vacuum therapy, the body can get rid of unwanted swelling and unsightly orange skin.



VACUUM INTENSITY LEVELS

The BeautyRelax Vacuform Exclusive offers 3 levels of vacuum strength. Each body part requires a different applicator size and a different suction power setting. Higher power for a truly deep intensive massage. Gentler suction will be appreciated on smaller body parts with increased sensitivity to touch.



MAIN ADVANTAGES

- Completely non-invasive nature of the treatment
- Safe, painless use
- Without any discomfort
- A truly functional vacuum massage

WHAT YOU CAN EXPECT BY USING IT

- Immediate improvement of blood circulation and metabolism of the treated area
- Skin is more supple and softer to the touch
- With regular use and adequate diet, softening of cellulite symptoms
- Shaping and firming of thighs, buttocks, abdomen

TECHNICAL PARAMETERS

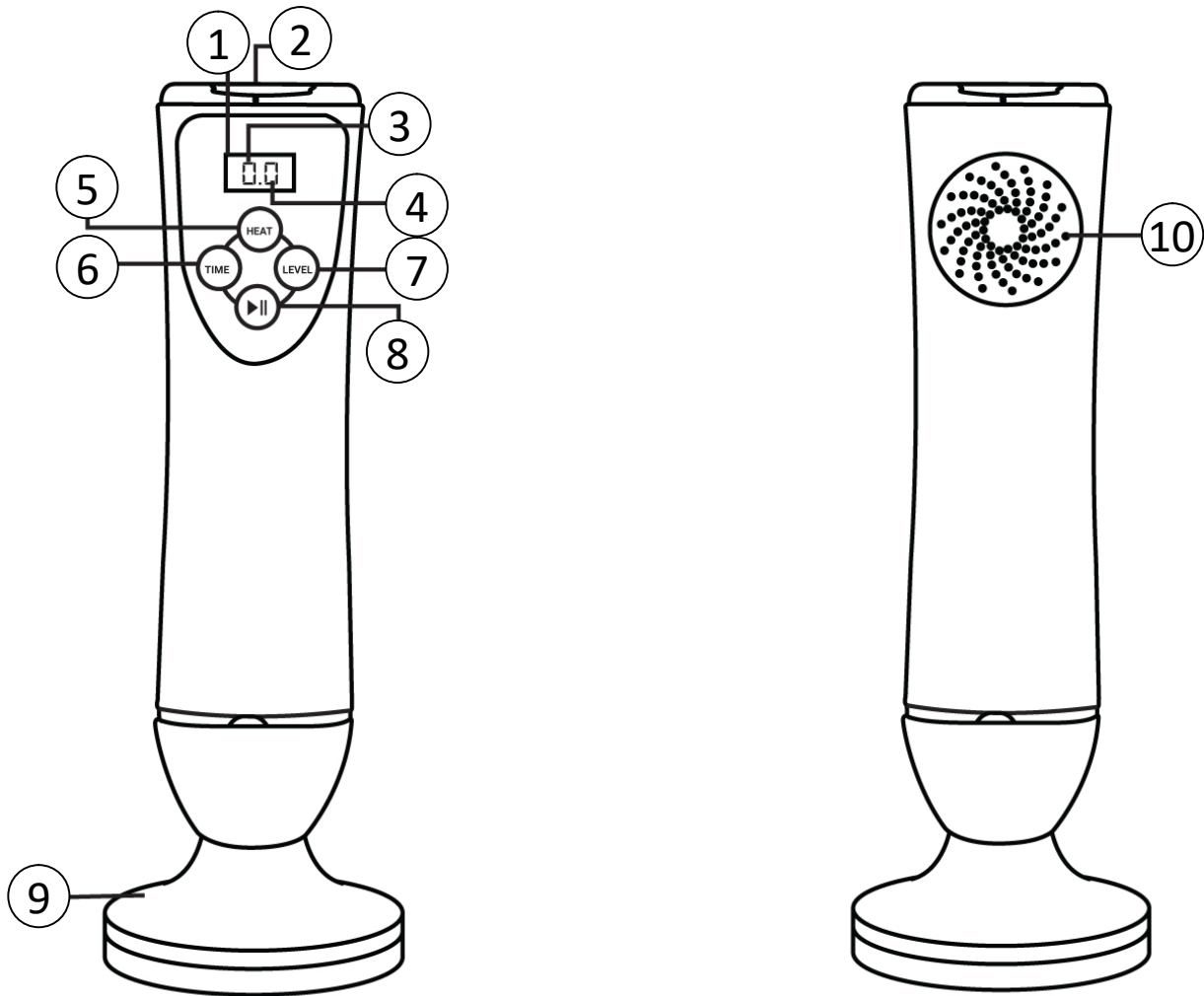
- Heating: yes
- Vacuum suction: 3 power levels
- Operating voltage: 9V
- Charging: built-in Li-ion battery
- Power: 220V mains adapter (included)
- Dimensions: 25x5x5cm
- Weight: 1kg

PACKAGING CONTENT

- 1x BeautyRelax vacuum massage device model BR-2460 VACUFORM EXCLUSIVE
- 3x Application head
- 1x Charging power adapter
- 1x Set of spare filter rollers and swabs
- 1x User manual



DEVICE DESCRIPTION



1. Display

2. Input for charging cable

3. Time in minutes

4. Vacuum suction power

5. HEAT button

6. TIME button

7. LEVEL button

8. START/STOP button

9. Application head

10. Cooling fan grille

CONTROL PANEL DESCRIPTION



TIME button - possibility to set the time of use of the device. There is a range from 1 to 30. Units are given in minutes. You can change the time setting at any time during the use of the device. The set time is indicated by the value before the dot on the left **12.3**



LEVEL button - possibility to set the vacuum suction power. There are a total of 3 power levels - (1) low (2) medium (3) high. You can change the vacuum suction power setting at any time during use of the unit. The power setting is indicated by the value behind the dot on the right **12.3**



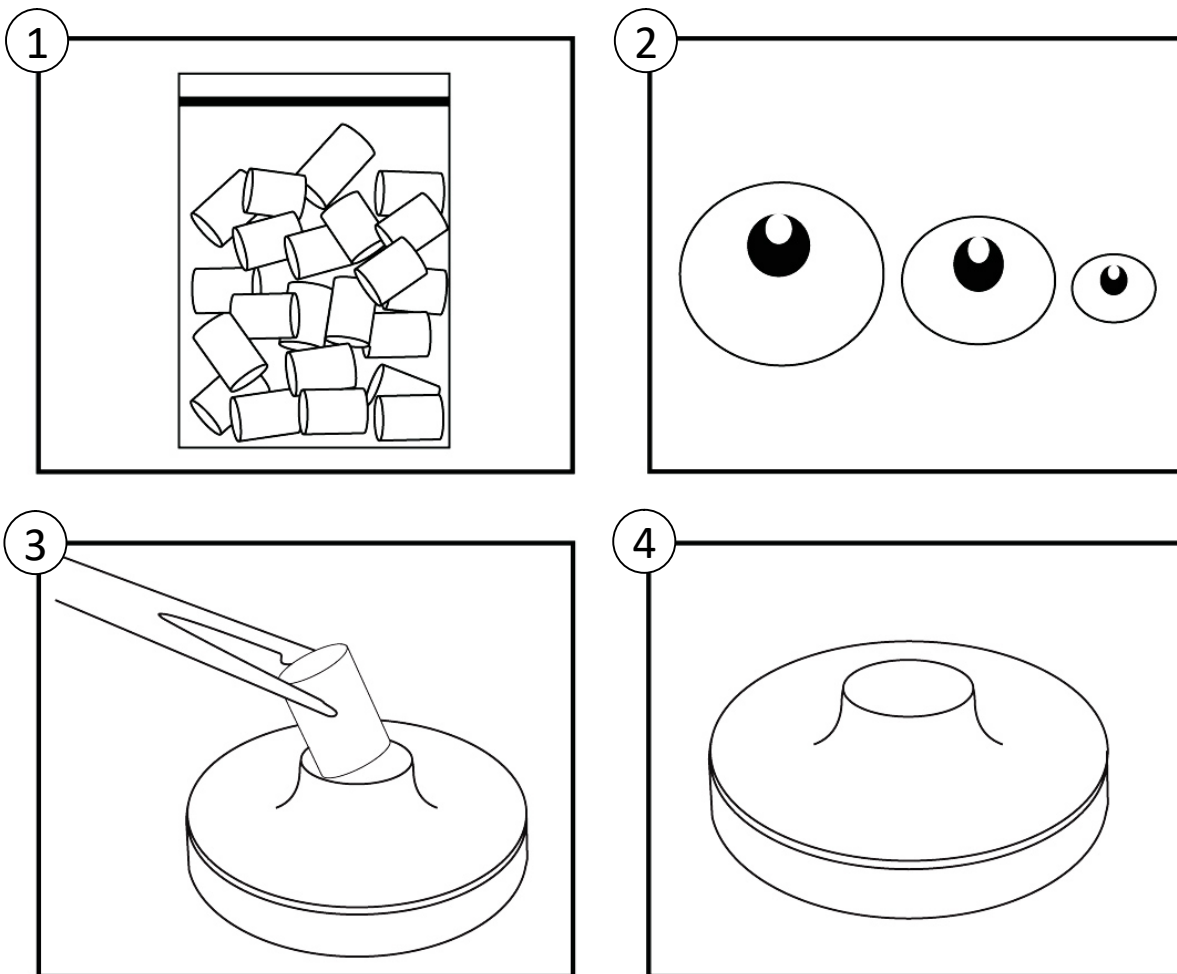
HEAT button - heating function. The heating of the application head is switched on or off. A flashing dot in the right side of 12.3 indicates the heating function is on.



START/STOP button - Button to switch the device on/off. You can also use the button to interrupt the operation of the device at any time. To switch on the device, briefly press the button. To stop the device by pressing the button briefly. You can switch the device off at any time by pressing the long button.

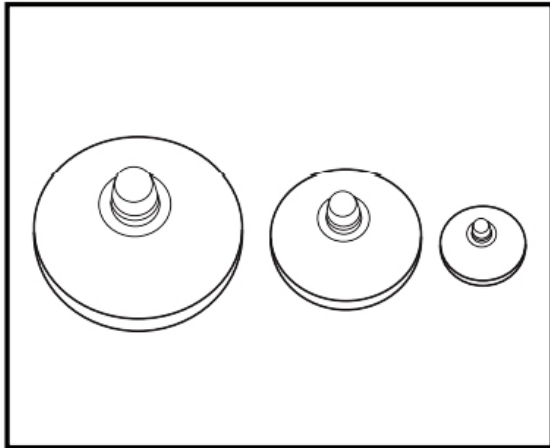
FILTER ROLLER REPLACEMENT

Filter rollers are included. The rollers create a mechanical barrier between the device and the application head. The roller is made of a special material that allows air flow, but at the same time prevents the penetration of dirt particles. The device's air compression system is thus protected to prevent dirt from being sucked in and damaging the device. The filter rollers do not need to be changed after each use of the device. It is recommended to visually check its condition periodically. In case of contamination, replace it with a new one. A filter pad is also included. Again, the service life depends on the frequency of use of the device. If it is dirty, replace it with a new one. If necessary, contact your dealer to purchase a new set of consumables.



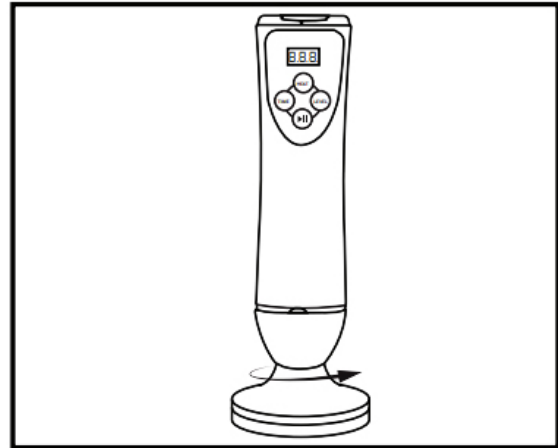
- 1. Select the filter roller from the package according to the size of the application head*
- 2. Unscrew the application head from the device*
- 3. Remove the used filter roller. Use tweezers, needle or small scissors to remove.*
- 4. Insert the new filter roller and screw the application head back to the device.*

USE OF THE DEVICE



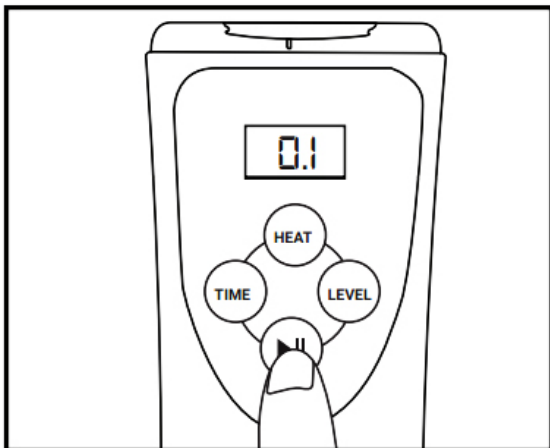
STEP 1

Select the appropriate size of the application head. Select the head so that it always covers the part of the body you want to target appropriately.



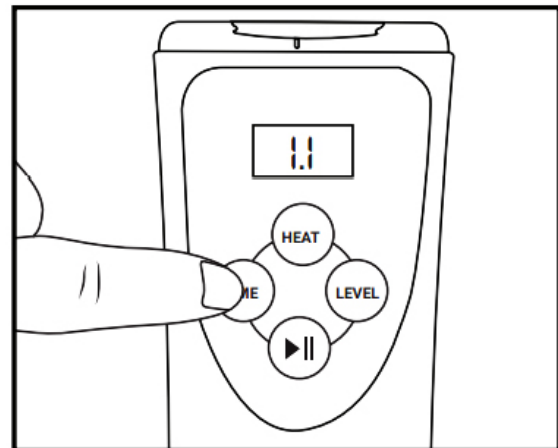
STEP 2

Screw the application head to the device. Tighten with care to avoid stripping the threads. On the other hand, the connection must be firm so that the head does not rotate during use.



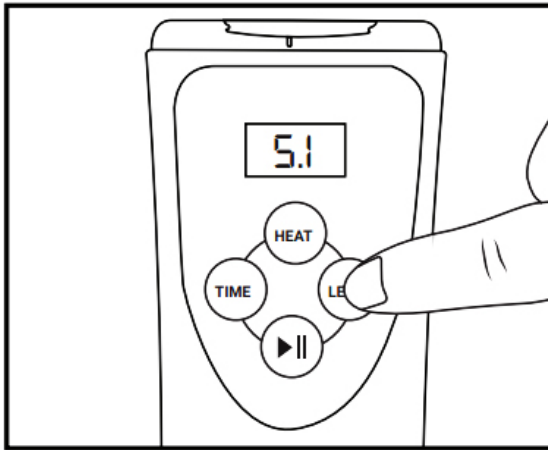
STEP 3

Use the **START/STOP** button to switch on the device. Press **STOP/START** button briefly to switch on the device. Press briefly to pause operation while the device is in use. Long press to switch off the device.



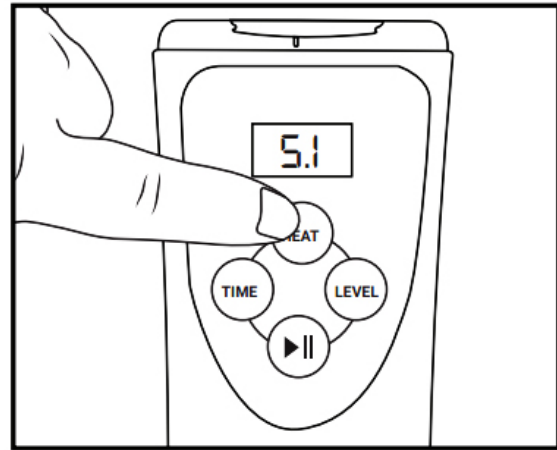
STEP 4

Use **TIME** button to set the treatment time. A time range of 1 to 30 minutes is available. You can change the time at any time during use. After the time has elapsed, the device will automatically switch off.



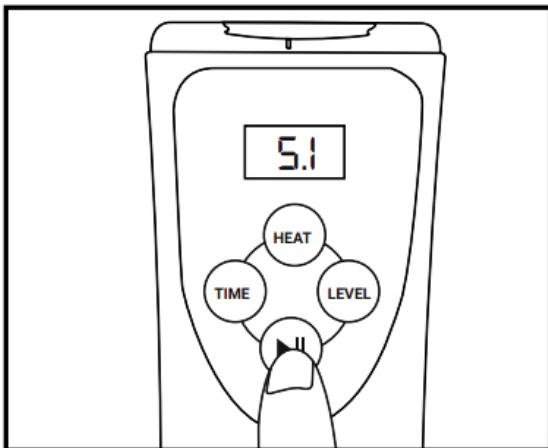
STEP 5

Use the **LEVEL** button to adjust the vacuum power. You can change the power at any time during use. Always start at the lowest value 1.



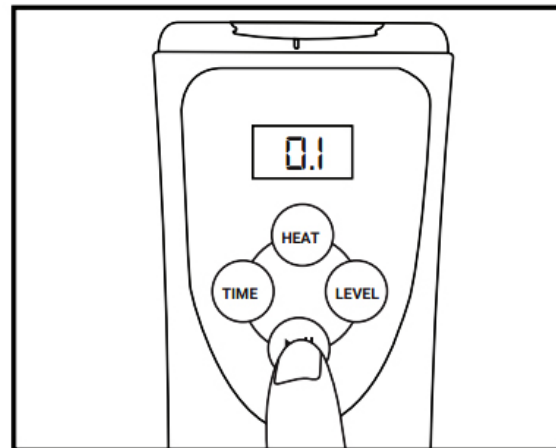
STEP 6

The device is equipped with heating of the application head. The heating is switched on using **HEAT** button. The head heats up within a few minutes. The function is accompanied by a flashing dot after the vacuum power setting value.



STEP 7

Use the **START/STOP** button to switch on the device. Press it briefly to pause the instrument.



STEP 8

You can switch off the device at any time by pressing **START/STOP** button for a long time.

HOW TO USE THE DEVICE CORRECTLY

- Skin should be thoroughly cleansed before each use. Ideally, the treatment should be timed after a full body bath. The skin is beautifully warm and supple.
- Apply a light layer of skin cream, anti-cellulite cream or any kind of **essential massage oil** (we recommend an oil-based product) to the area you want to treat. The main reason for this is to improve the movement of the massage head over the body. In addition, these products have a much better absorption capacity into the subcutaneous tissue during the massage. **DO NOT use the device without a similar product.**
- Always ensure that the filter roller and swab are in the device. Otherwise, dirt could be sucked in and irreversibly damage the device.

movement massage

Move the device over the body in longer and shorter stretches - see picture. Using your free hand, stretch your skin as much as possible. The movement over the skin will be much easier. Always make sure that the skin is moisturised as much as possible with cream or oil. Never use the device to massage dry. It is important to set the suction force to the lowest possible level when doing a motion massage. If the device sucks a part of the body too strongly, it will not be possible to move the device. Adjust the speed at which the head moves over the skin according to the vacuum power setting and the size of the head.

point massage

Point massage consists in treating a specific body part in parts - see picture. Switch on the device and apply the applicator to the skin. After setting all the parameters, the device starts the suction function at a strength and length of your choice. With spot massage, the skin may become red after the treatment. If you set the suction too strong, slight swelling or bruising may appear on the skin, but this will completely disappear within a few days. Always start at a lower vacuum strength and gradually increase according to your feeling. Definitely do not start at the highest setting right away!



Follow the graphic visualisation below to treat other parts of the body. The difference between movement and point massage lies not only in the different technique, but in the effect on the body. In particular, **movement massage** helps to improve lymphatic function. The body gets better at draining excess water from the limbs. With a **point massage**, you stimulate local blood circulation, which contributes to an overall more efficient metabolism and removal of harmful substances. Ideal for use on areas with signs of cellulite (orange skin). Choose the size of the applicator according to the size of the body area to be treated.



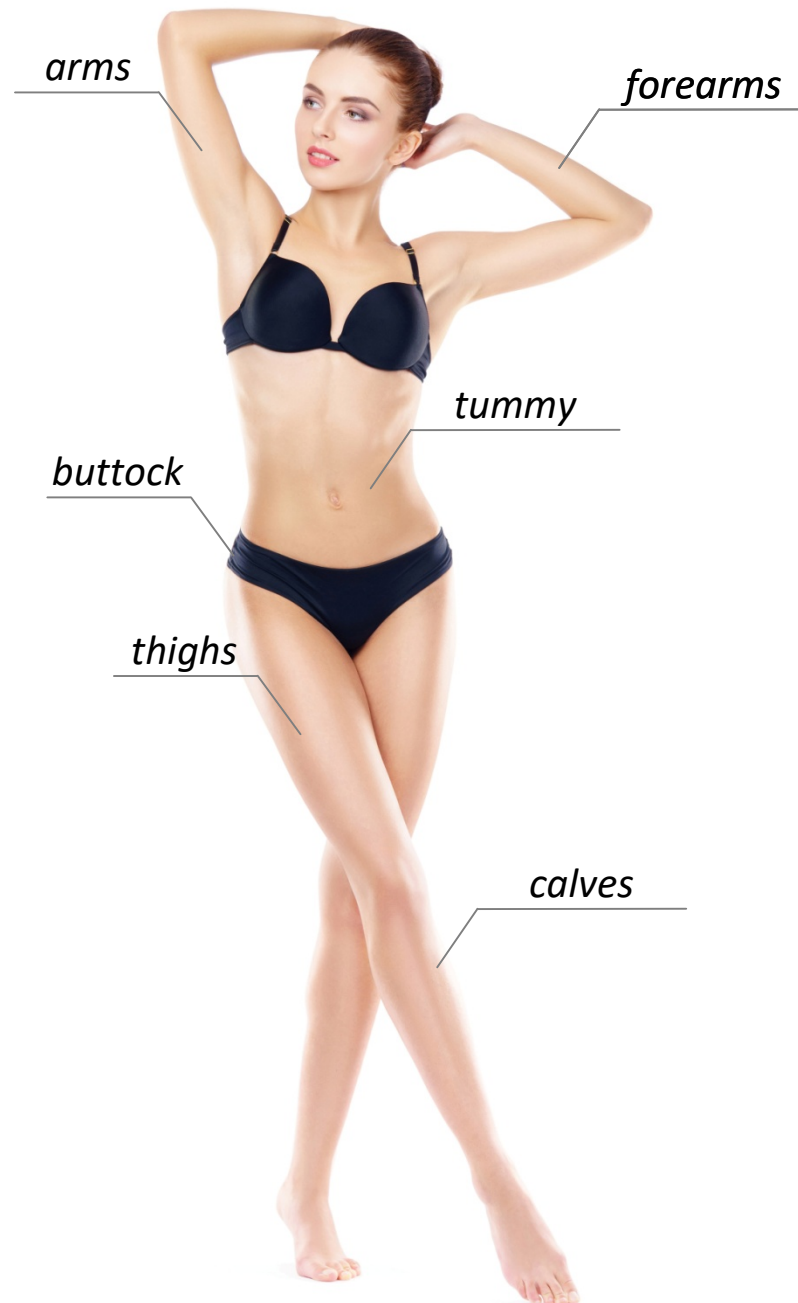
movement massage



point massage

PERMITTED TREATMENT AREAS

- forearms
- arms
- tummy
- thighs
- buttock
- calves



LENGTH OF TREATMENT

A maximum treatment of 15 to 20 minutes is recommended for each part. You can combine the treatments as you wish. It is advisable to spread the body massage over the whole week. A part is taken as (one arm, one thigh, one calf, etc.).

CLEANING AND MAINTENANCE

Clean the inside of the applicator thoroughly after each use. Do not use any aggressive cleaning agents. We recommend the use of special disinfectant sprays, which are commonly used in e.g. healthcare or beauty salons for cleaning instruments. Use this product only to clean the replaceable flasks. Moisture must NEVER penetrate the instrument. Before each use, check for dirt inside the applicator. They could be sucked in by the instrument during use.

COLOURING OF THE FLAG

Vacuum massage can cause red spots or even bruising on the skin (if a really strong vacuum massage is used). This is a completely natural phenomenon. Over the course of a few hours (depending on the power of the vacuum massage) the discolouration will gradually disappear. At the highest levels of vacuum massage, red spots can turn into bruises. In this case, the return to the natural skin colour takes longer.



RECHARGING THE BATTERY

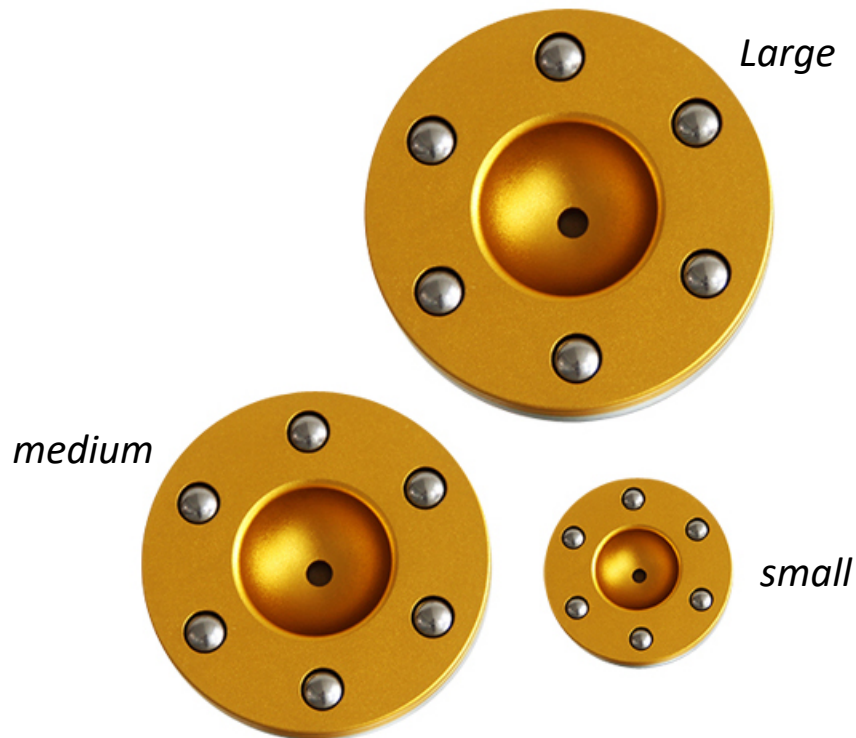
The device has a built-in rechargeable battery.

Charging procedure:

1. For charging, use the included AC adapter.
2. The length of the charge depends on the current condition of the battery.
3. The charging progress is shown on the display. The number indicates the state of charge of the battery capacity in percentage.
4. The length of the charge depends on the state of discharge of the battery.
5. Once the battery is charged, the light on the display stops.

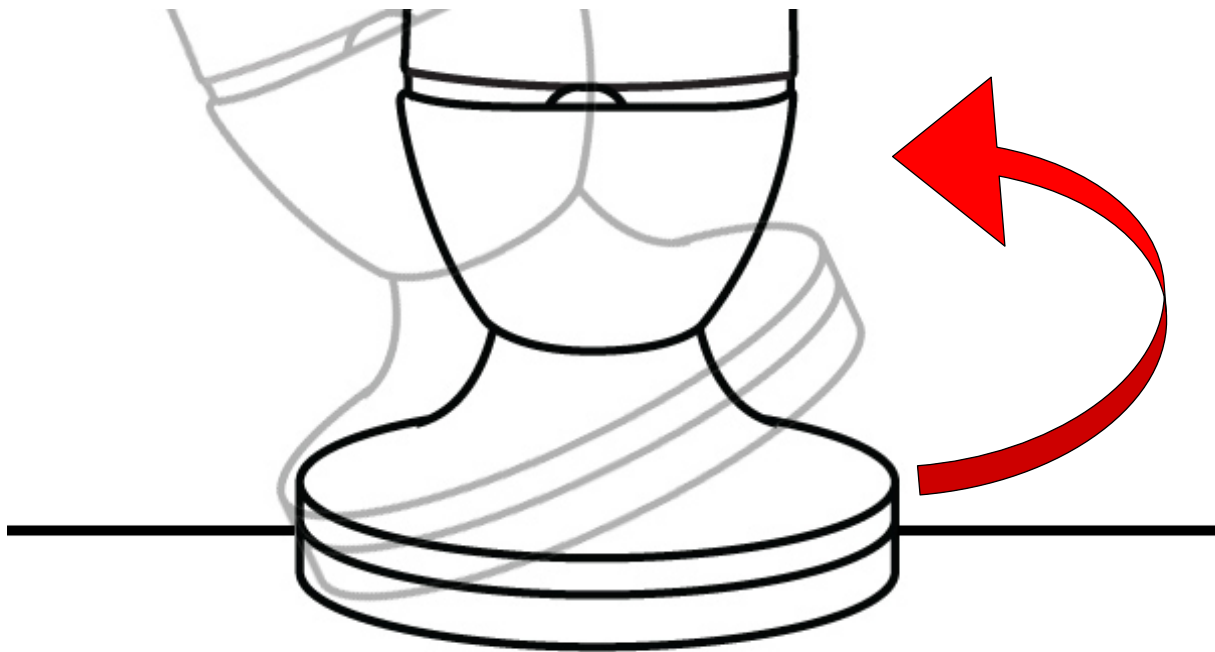
SELECTION OF THE APPLICATION HEAD

The package includes 3 interchangeable application heads. They are made of metal to maintain a long service life. Each applicator head has integrated balls for mechanical massage and better movement of the head over the skin. Select the applicator head according to the size of the body part you want to target during the treatment. The application head is connected to the device by a thread. Tighten the head firmly but with feeling and reasonable force. Avoid tearing the thread.



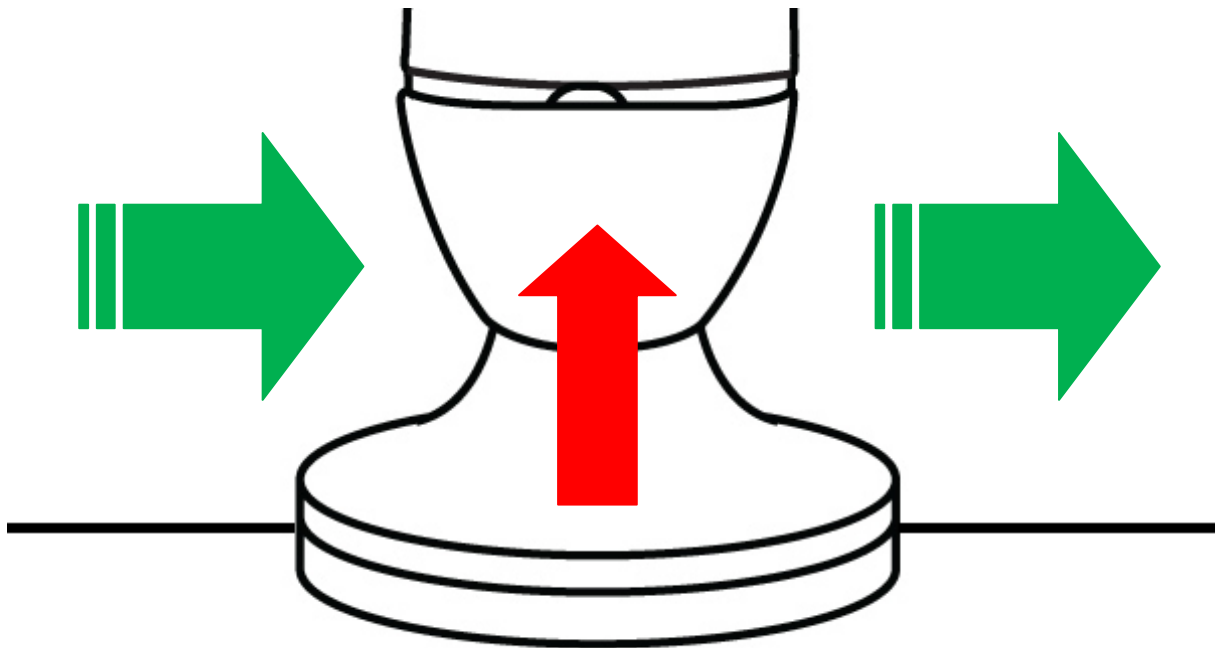
IMPORTANT SAFETY NOTICES

The massager achieves a relatively high performance. You can easily adjust it using the control panel. There are three levels to choose from - low, medium, high. Even if the lowest power is used, it can be more difficult to remove the application head from the skin again with prolonged suction. The best method is to tilt the device diagonally. With a perpendicular orientation, detaching the applicator head from the skin could prove problematic.



SPEED OF MOVEMENT ON THE SKIN

One of the massage techniques of using the device is called stamping. The method consists in sucking the application head of the skin in one place. The applicator head is then removed and the same process is performed a short distance away. The disconnection of the application head with the skin is best done with an oblique tilt - see previous page. When using the massager, the effect of the vacuum suction over time must be taken into account. As the length of contact of the applicator head with the skin at one point increases, the vacuum suction gradually graduates (at any power setting). If you move the head of the device over the skin in quicker strokes, the gradation of the vacuum action will be significantly eliminated if you stand in one place. Simply put. With a faster movement of the head across the skin, you will find the movement easier, but with less vacuum action. Again, we stress the need to always moisturize the skin sufficiently. Ideally with a massage oil. If you "lubricate" the skin sufficiently, this has a very significant effect on the comfort of the device. The balls integrated into the application head also help to move the skin more easily.



RELATED RECOMMENDED DEVICES

The fight against cellulite is a long run. Nevertheless, there are effective technologies that help to combat the symptoms of orange skin in the long run. A combination of ultrasonic cavitation and vacuum drainage is optimal. Ultrasound actively targets the stimulation of fat cells. Vacuum drainage stimulates the blood circulation and lymphatic system in an appropriate way. This is a common treatment procedure in massage parlours. In the first phase you treat the selected area with ultrasound and in the second phase with vacuum drainage. The effect of the ultrasound is thus maximally enhanced.



BEAUTYRELAX 3IN1



CAVIMAX



CAVIMAX OPTIMAL



CELLUFORM



CELLUFORM ULTIMATE



CAVIMAX ULTIMATE

FREQUENTLY ASKED QUESTIONS AND ANSWERS

How should the treatment be carried out properly in the home environment?

Please read all the details in this manual very carefully before starting the treatment. Pay particular attention to the contraindications. If you are unsure, consult your general practitioner. Also study the list of areas that are precisely defined for vacuum massage. During the treatment, adopt a lying or sitting position. Make yourself comfortable. Wear something lighter, comfortable.

What precautions must be taken before and after treatment?

Do not eat heavy or fatty foods for at least 4 hours before the treatment. Light meals (e.g. vegetable salad, yogurt) are recommended. The day before treatment, on the day of treatment and for several days after treatment, increase your drinking to 2 to 2.5 litres of pure water per day. Avoid fizzy and sweetened waters. For a week after your ultrasound treatment, you should avoid alcohol, caffeine, nicotine, heavy and fatty foods.

Does the treatment with a massage machine hurt?

The treatment is completely painless and safe if all the instructions in the manual are followed. Always start at the lowest setting when adjusting the vacuum suction force.

Can I use the massager without prior skin treatment?

Before using the massager, it is essential to apply any type of lotion or oil to the skin. Simply create a contact layer between the applicator and the skin. The movement of the applicator will be much easier. In addition, the active ingredients from creams and oils will be effectively massaged into the subcutaneous tissue.

What can I expect from using the massager?

Regular use will make your skin firmer and smoother, especially in areas affected by the negative effects of cellulite. In cellulite, the volume of subcutaneous fat cells increases and they are pushed against the surface of the skin, forming unsightly dimples that resemble the texture of orange peel. Massage with the device will improve the flow of lymph to remove impurities from the blood. With this gentle technique, the body can be relieved of swelling and health problems that would be harmed by a traditional sports and recreational massage can be resolved.

Is it safe to use the massager?

The massager has no sharp edges. It should not injure you in any way. However, pay particular attention to the vacuum suction force setting. Start at a low setting and gradually increase according to your feeling perception. Increased suction intensity may cause mild swelling to bruising, which should subside within hours to days. Your skin may turn red when the treatment is complete. However, this effect will also disappear on its own.

What is the reason for cleaning/disinfecting the application head?

The applicator should be thoroughly cleaned after use. Cleaning will prevent possible ingress into the device and ensure the best possible hygiene of operation.

How long should an individual skin treatment take?

The recommended length of treatment for one part should be in the range of 10 to 15 minutes. A lot is considered to be (one arm, one thigh, one calf, etc.).

In what cases should I not use the device?

In this instruction manual, the "contraindications" passage lists the health limitations when the device cannot be used. Please pay particular attention to any skin defects. Pay attention to the completion of the treatment. Thereafter, it is not a problem to use the device again.

Is the device a medical device?

No, it's not. It belongs to the category of massagers.

What should I do if the battery loses capacity after a long period of time?

If the battery capacity decreases significantly over time, please feel free to contact us at: mh@santadria.cz We will send you information on how the battery can be replaced.

Does the device have any certification?

Device for standard European certification. It meets all the standards that are imposed on devices of this type. In case of need, please contact us at the following email address: mh@santadria.cz We will send you the declaration of conformity electronically.

Can more than one person use the device?

Primarily we don't recommend it. However, if it is a family member and the process of cleaning and disinfecting the flasks is followed after each treatment, the other person can use the device.

Is the device waterproof?

It's not.

A FEW SENTENCES IN CONCLUSION

The Vacuform Exclusive model is one of the best of our range in the category of handheld massagers with vacuum suction. Thanks to the use of quality components, it is also possible to use it for busy commercial operations. The device is designed for very demanding customers who require sufficient performance and high utility value from their products. The device has a high quality workmanship. Thanks to its design it is easy to hold. You can easily treat yourself. The built-in rechargeable battery contributes to the ease of use. No power cords get in the way. Handle the power with extra care. The device offers a generous power range to adapt to the needs of every user. Always combine use with massage oil. If you complement the device with a model with ultrasonic cavitation, this is the ideal combination to effectively fight cellulite. I would recommend the device to anyone who is actively interested in their health and expects quality from the device in all aspects.



Martin Hrbek

www.beautyrelax.cz

CLEANING AND MAINTENANCE

The application heads of the device are made of corrosion-resistant material. Nevertheless, we recommend wiping the head dry before storing the device for further use. When using massage oil, you do not need to degrease the heads in any way. Do not use aggressive cleaning agents for cleaning. If more than one person uses the device, we recommend disinfecting the heads with a solution containing a high percentage of alcohol. This will prevent the possible transmission of bacteria.

DISPOSAL OF USED ELECTRICAL EQUIPMENT



This symbol on products or in accompanying documents means that used electrical and electronic products must not be added to normal municipal waste. For proper disposal, refurbishment and recycling, take these products to the designated collection points. Alternatively, in some European Union or other European countries, you can return your products to your local retailer when purchasing an equivalent new product. By properly disposing of this product, you will help conserve valuable natural resources and help prevent potential negative environmental and human health impacts that could result from improper waste disposal. For further details, contact your local authority or nearest collection point. This symbol is valid in the European Union. If you wish to dispose of this product, please obtain the necessary information on the correct method of disposal from your local authorities or your dealer.

CERTIFICATION



The product is approved for use in European Union countries and bears the CE mark. The declaration of conformity and all documentation is available from the importer.

IMPORTER

SANTADRIA s.r.o. , Mojmírovo nám. 75/2 Brno, 612 00
IČO: 29195454 | DIC: CZ29195454

If you have any questions about the product, please do not hesitate to contact us:

Email: mh@santadria.cz

Printing errors, features and changes in technical parameters reserved.

ES DECLARATION OF CONFORMITY

The undersigned, representing the company

SANTADRIA s.r.o.

Mojmírovo nám. 75/2, Brno 612 00

ID: 29195454

hereby declares that the product

Massage vacuum device VACUFORM EXCLUSIVE

launched under the model name: **BeautyRelax BR-2460**

EAN **8594166119338**

is in compliance with the following European standards:

EN 60601-1-2:2007

EN 61000-3-2:2006+A1:2009+A2:2009

EN 61000-3-3:2008

EN 60601-1:2006+A11:2011

EN 60825-1:2007

Based on compliance with these directives, the product has been CE marked.

The product also complies with RoHS Directive 2002/95/EC (RoHS). All materials are health-safe. They do not contain any heavy metals such as cadmium and other toxic substances.

For safe use, it is essential to strictly follow the instructions in the instruction manual included in the package.




SANTADRIA s.r.o.
Mojmírovo nám. 75/2, 612 00 Brno
DIČ: CZ29195454 Tel.: 737 196 160

Place of issue: Brno

Release date: 1.3.2022

Martin Hrbek, Managing Director