

iBaby® Care Monitor

M2C



Quick Start Guide
Guide de démarrage rapide

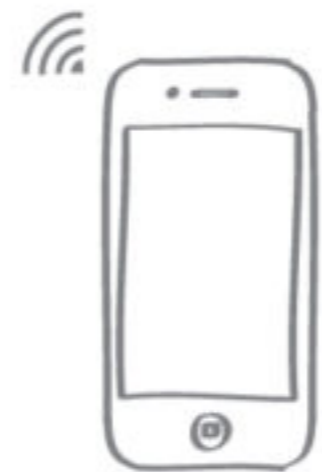
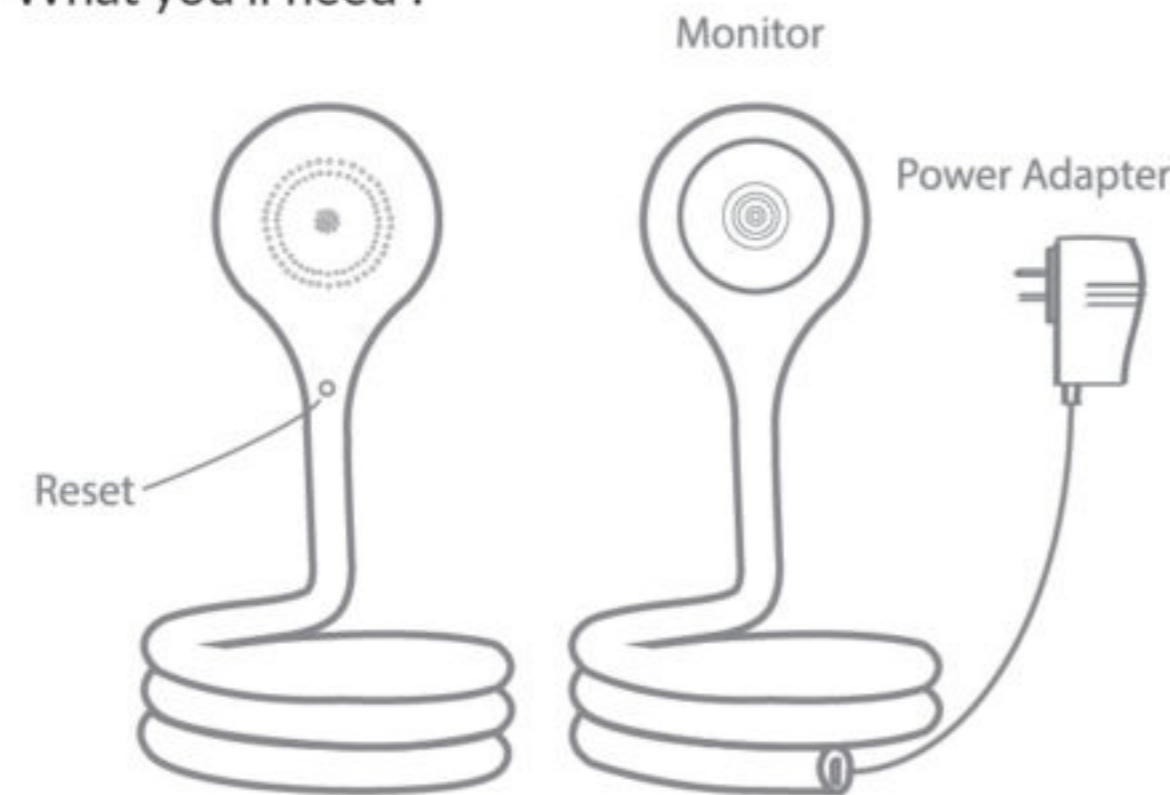
iOS
Android

Includes

- 1 M2C Baby Monitor
- 1 Power Adapter
- 1 Wall Mount Kit
- 1 Quick Start Guide

Getting Started

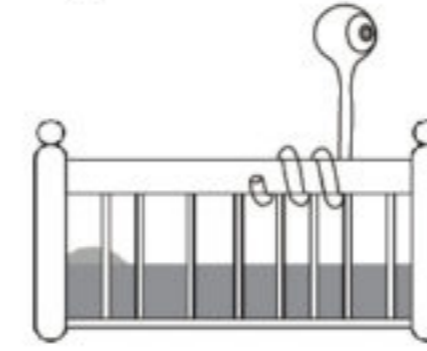
What you'll need :



Place Your iBaby M2C Anywhere!



On a flat surface



On a crib



Mount on a wall

How to Mount Your iBaby M2C

1. Place the 3M Adhesive on the wall.
2. Drill two holes and insert (2) anchors.
3. Drill the provided (2) screws.
4. Place the wall mount on the wall.
5. Insert your iBaby M2C into the wall mount



3M Adhesive



2 Anchors



2 Screws



Wall mount



How to Install Your Monitor

From the App Store or Google Play Store, download the **iBaby Care+** App onto your supported device, then launch the App.

Verify that your smart device is connected to your 2.4 GHz Wi-Fi internet connection.

Connect the power adapter to the back of your monitor and wait until the LED light flashes red.

iOS-Enter Wi-Fi password when prompted to, then wait for installation.

Android-Enter Wi-Fi password when prompted to, then wait for installation.

Follow the on-screen instructions and your monitor will be ready to use within 30-60 seconds.

* After you successfully install your M2C, switch back to the 2.4 GHz Wi-Fi connection you initially used.

Changing your router or installation failed?

Reset your monitor by holding the reset button for 15 seconds
(Located on the back of the monitor)