

Table of Contents

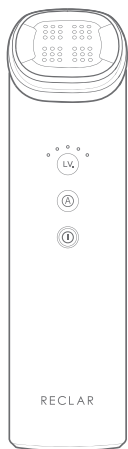
Product Components	37
Key Core Technology	39
Key Effects	43
Key Features	47
How to Use	50
Precautions	61
Frequently Asked Questions	63
Product Specifications	67
Warranty Policy	68

Product Components

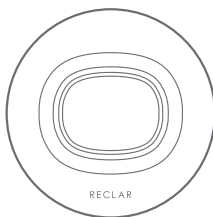
■ Components



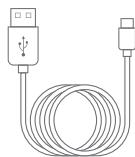
Head
Protective Cap



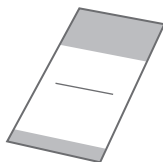
Main Device



Wireless
Charging Stand



C-type USB
Charging Cable



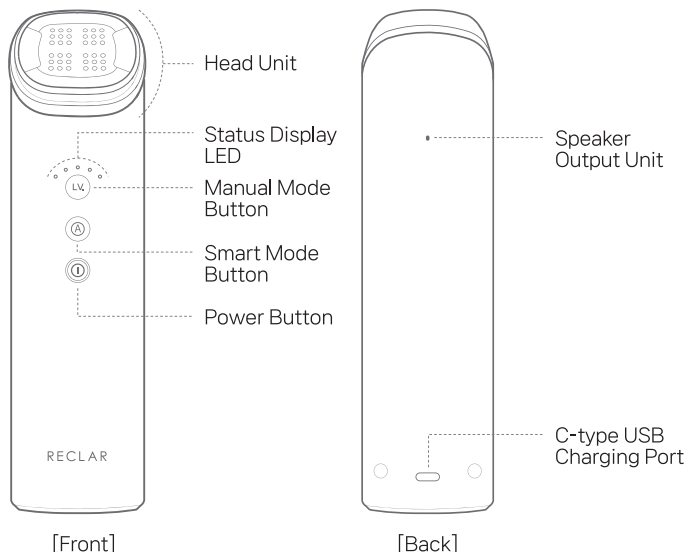
Quality Assurance
Certificate



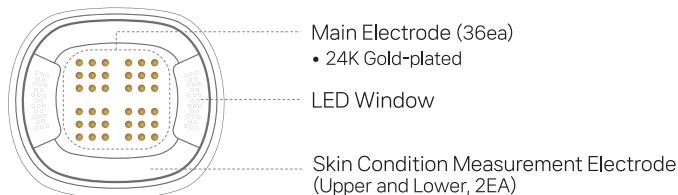
User Manual

Names of Each Part

■ Main Device



■ Head Unit



Key Core Technology

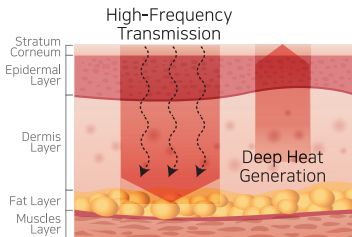
1

10-minute Daily Sessions for Powerful Skin Cell Regeneration and Elasticity Care

RE-MERGE's unique and powerful skin regeneration effects, delivered by 1 MHz high-frequency energy generated through 36 main 24K gold-plated electrodes.

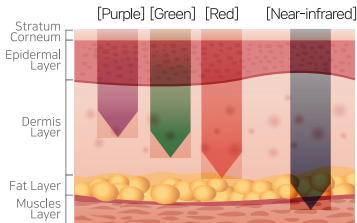
High-Frequency Skin Cell Regeneration Technology

Transmits high-frequency energy to the fat layer, which promotes fat decomposition and assists in skin lifting.



LED Light Therapy

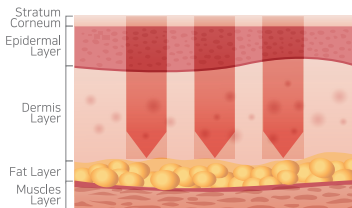
Utilizes three stages of LED and near-infrared rays to promote skin elastin and collagen production.



Purple 400-420nm / Green 520-565nm
Red 625-700nm / Near-infrared 844-856nm

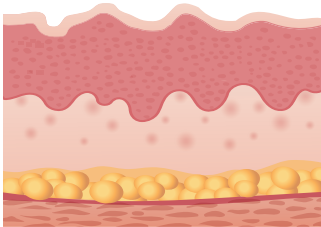
Electroporation

The electrical micro-pulses help the active ingredients to deeply penetrate into the skin.

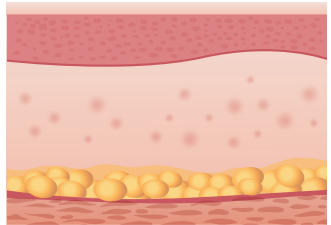


Experience skin transformation with RE-Merge!

Skin surface before/after using RE-Merge

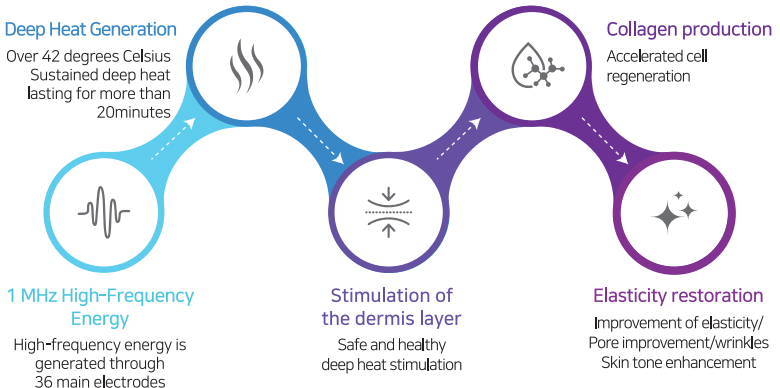


[Before Use]



[After Use]

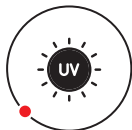
Skin Cell Regeneration Mechanism





Skin Burn Prevention Feature

The device monitors the temperature and output intensity of the main electrodes in real time to prevent skin burns and damage during use.



Automatic Sterilization Function

The head unit that directly contacts the skin undergoes automatic sterilization with a UV sterilization LED for 40 minutes.

- The automatic sterilization function operates only during charging.
- Please make sure to close the protective cap during charging.



Bipolar Method

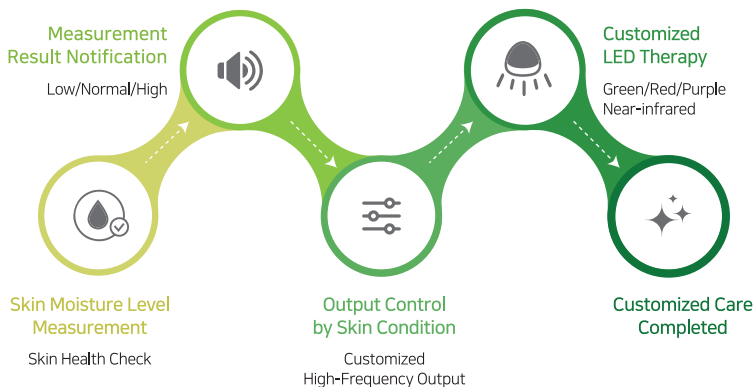
The high-frequency energy is applied only between the electrodes, making it safe for use on thin and sensitive areas such as around the eyes.

3

Smart Diagnostic Care

The device measures the skin condition of each user and automatically optimizes the energy output for the user's skin, enabling safe and effective smart skin care for elasticity and regeneration.

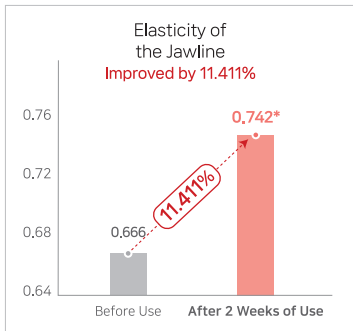
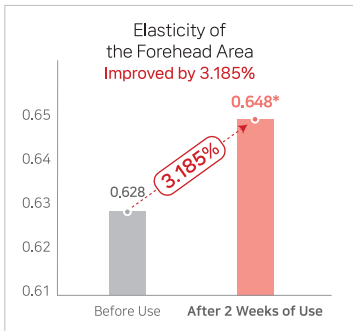
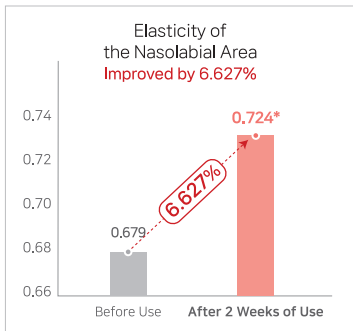
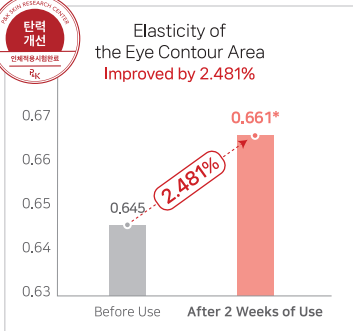
Smart Care



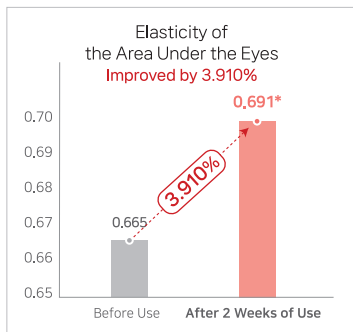
Key Effects

Six definite effects verified by 12 human application tests!

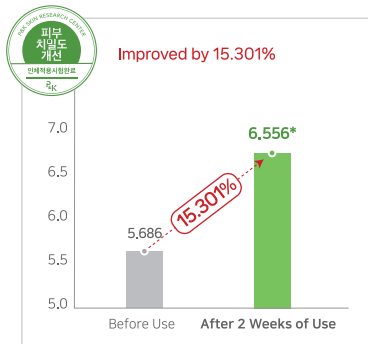
Skin Elasticity Improvement



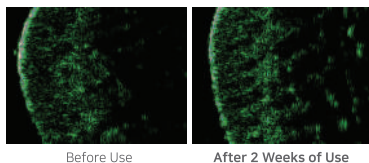
Skin Elasticity Improvement



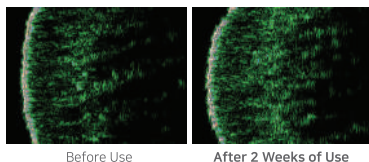
Skin Density Improvement



Case 1

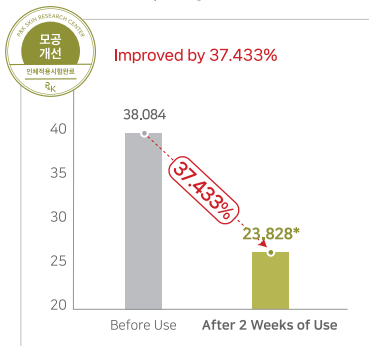


Case 2

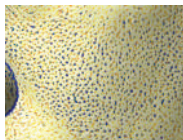


Key Effects

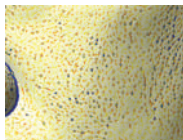
Pore Density Improvement



Case 1

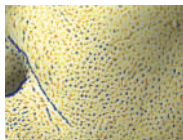


Before Use

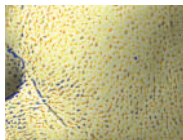


After 2 Weeks of Use

Case 2

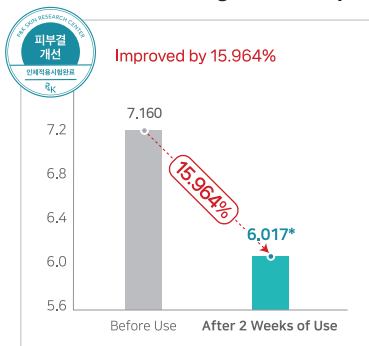


Before Use

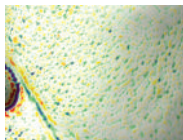


After 2 Weeks of Use

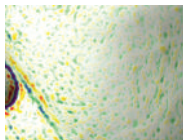
Skin Texture (Roughness) Improvement



Case 1

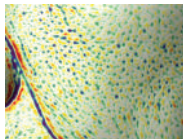


Before Use

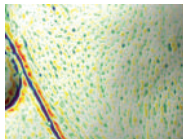


After 2 Weeks of Use

Case 2

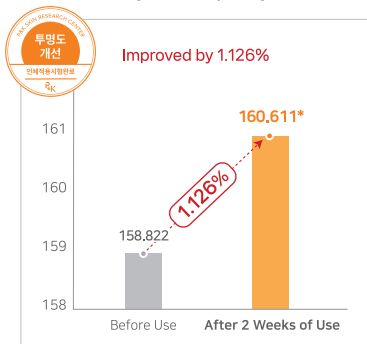


Before Use



After 2 Weeks of Use

Skin Transparency Improvement



Case 1



Before Use

After 2 Weeks of Use

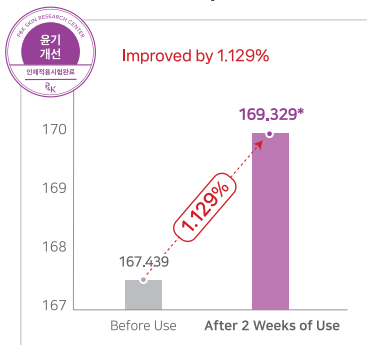
Case 2



Before Use

After 2 Weeks of Use

Skin Radiance Improvement



Case 1



Before Use

After 2 Weeks of Use

Case 2



Before Use

After 2 Weeks of Use

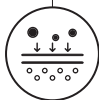
- Product effects may vary by individual.
- All data are results from human application tests conducted with the use of 8Pepta Boosting Gel Cream.

Key Features



Skin Cell Regeneration

1 MHz 36 Main Electrodes
Powerful cell regeneration effect



Effective Ingredient Penetration

Electroporation
Penetration of effective ingredients into the skin



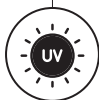
Safety

Smart Safety Device
Prevents skin burns and damage



Smart Care

Skin Condition Measurement
Smart customized care based on the user's skin condition



UV Sterilization

Automatic sterilization function
Enables clean and hygienic use



Definite Effects

Powerful effects with just 10 minutes a day
Improves elasticity, pore size, density, roughness, and radiance



User Friendliness (Voice Guidance)

Voice Guidance
Easy and convenient use by anyone



Wireless Charging Stand

Convenient charging and storage

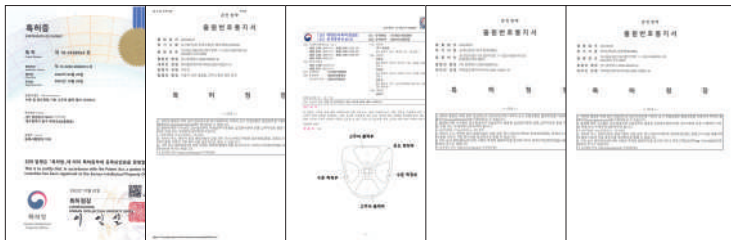
Special Technology

Certification



KC(Korea) / CE(Europe) / TELEC(Japan)

Patents and Utility Models



High-Frequency Output Control Device Based on Moisture and Temperature Measurement / User-Customized High-Frequency Output Control Device for Skin / Applications and Registrations for the Entire Device and Head Unit Design

Key Features

Certified Test Reports



Cosmetics Testing / Frequency Measurement / High-Temperature and High-Humidity Testing / Thermal Shock Testing



Saltwater Spray Testing / LED Peak Wavelength Testing

Power On

Please fully charge the product once upon receipt.

Press and hold the power button for about 2 seconds in the power-off state, and you will hear the voice guidance “RECLAR” indicating that the power is on. This state is the standby mode, and the status LED blinks sequentially.

Power Off

Press and hold the power button for about 2 seconds during operation or in standby mode and you will hear the power-off notification sound, indicating that the power is off.

Automatic Shutdown

The Elasticity Care Mode will automatically switch to standby mode after 10 minutes of operation.

If there is no activity detected for 5 minutes while in standby mode, the power will automatically turn off.

Low Battery Alert

If the battery charge is low during elasticity device operation, a voice notification will sound, saying “Battery Low, Charging is Required,” and the power will turn off.

- If the low battery notification sounds, please avoid excessive use and fully recharge the device before using it again.

How to Use

Battery Charging and Auto Sterilization

Connect the USB charging cable to the charging port at the bottom on the back of the main device or use the wireless charging cradle.



Charging using
Direct Cable Connection



Charging using Cradle

- Place the device on the cradle with the front side facing the cradle logo

1. A voice notification will sound, saying "Charging is starting! Please close the protective cap", and the charging process will begin.
 2. When charging starts, a red LED will light up, and a voice notification will say "UV sterilization is starting." An automatic sterilization process will commence on the head unit, lasting for 40 minutes.
- The automatic sterilization function operates only during charging.
 - The device cannot be used while charging; always close the protective cap during charging to activate the UV sterilization process.
 - Avoid looking directly at the UV LED from a close distance to prevent visual impairment or corneal damage. Always keep the protective cap closed.
 - The wireless charging cradle is exclusively designed for RE-Merge. Do not place or charge any products other than this device on the wireless charging cradle.



Preparation Before Use

Before using RE-Merge, cleanse and wash your skin to ensure a clean skin condition.

- Avoid using the device without cleansing or washing, as impurities or contaminants may lead to skin troubles.

Application of Massage Gel/Cream

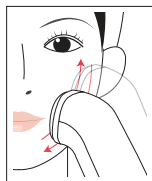
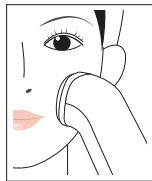
Apply an appropriate amount of massage gel or cream onto the main electrodes of the head unit.

- When taking care of areas with thin skin, such as around the eyes, lips, under the chin, and forehead, make sure to apply a sufficient amount of massage gel or cream.
- Do not use the device without massage gel or cream to avoid the risk of burns.
- For effective care and to prevent burns, always use the dedicated massage gel or cream.



Massage Technique

1. During the care process, ensure that the entire main electrodes makes contact with the skin by pressing the head unit horizontally against the skin.
2. Press the head unit firmly against the skin to ensure good contact with the main electrodes and perform a slow and gentle massage by drawing lines back and forth.



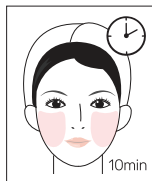
[TIP] It is recommended to begin the massage from areas with relatively thicker skin layers, such as the cheeks and jawline.

- When taking care of areas with thin skin, such as around the eyes, lips, under the chin, and forehead, make sure to apply a sufficient amount of massage gel or cream.
- Do not use the device without massage gel or cream to avoid the risk of burns.

Massage Time and Frequency

The recommended use is once a day for 10 minutes (5 minutes on the left side / 5 minutes on the right side).

- Please adhere to the recommended usage frequency and time. Using the device too frequently or for extended periods of time may damage skin cells or compromise the skin barrier.



How to Use



How to Use Smart Mode

The Smart Mode is a customized automatic care mode that measures the moisture level of the skin and automatically sets the output intensity and LED wavelength for optimal skin care based on the user's skin condition.


Use the "Smart Mode", if you fall under any of the following categories:


- Those who desire personalized skin care
- Those who are unsure about which level to use for initial use
- Those who are not familiar with their own skin condition
- Those who find it difficult to use the manual mode


1. After cleansing and removing remaining moisture from the skin without applying anything, briefly press the Smart Mode button.
Then, press the electrodes of the device firmly against your cheek to measure the moisture level of the skin. (It takes about 3 seconds)
 - Depending on the moisture level of the skin, the output intensity will automatically adjust to levels 1 to 9.
 - The LED output wavelength will also automatically adjust based on the moisture level of the skin.
 - [Refer to page 20 for LED control based on skin moisture levels.](#)
2. Apply an appropriate amount of massage gel or cream to the main electrode part of the head unit.
 - [Refer to page 18 for the method of applying massage gel or cream.](#)
3. Place the head unit on your face horizontally and gently massage your entire face for 10 minutes while pressing firmly.
 - [Refer to page 18 for the massage method.](#)
4. After using the device, apply your basic skincare products(cream or lotion) and finish your skincare routine.

LED Control Based on Skin Moisture Levels

Near-infrared 844-856nm	Operates in all skin care modes Promotes blood circulation for accelerated regeneration
-----------------------------------	---

GREEN 520-565nm 	Low Moisture Level		
	Level 1	Level 2	Level 3
	Repair Stage Supplying Skin Cell Vitality Complex Skin Issues and Dark Spot Care		

RED 625-700nm 	Normal Moisture Level		
	Level 4	Level 5	Level 6
	Cell Regeneration Stage Accelerating Skin Regeneration Promoting Collagen Production / Wrinkle Improvement		

PURPLE 400-420nm 	High Moisture Level		
	Level 7	Level 8	Level 9
	Boosting Stage Skin Cell Regeneration and Maintenance Maintaining Healthy Skin Layer		

How to Use

LV.

How to Use Manual Mode

Use the Manual Mode when you want to directly choose the desired output intensity for your skin care.

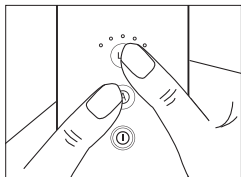
Use the "Manual Mode", if you fall under any of the following categories:

- Those who desire stronger care than the automatic care output
- Those who prefer to fix the output intensity for care
- Those who find it cumbersome to measure skin condition(moisture)

1. After cleansing, press the Manual Mode button briefly to select the desired care level (Level 1-5)
 - As you increase the level from level 1 to 5, the output intensity increases, and higher levels also lead to increased heat sensation in the skin.
 - For initial use, it is recommended to start with levels 1 or 2 and gradually increase the level to find the suitable one for your skin.
 - [Refer to page 18 for preparation before use.](#)
2. Apply an appropriate amount of massage gel or cream to the main electrode part of the head unit.
 - [Refer to page 18 for the method of applying massage gel or cream.](#)
3. Place the head unit on your face horizontally and gently massage your entire face for 10 minutes while pressing firmly.
 - [Refer to page 18 for the massage method.](#)
4. After using the device, apply your basic skincare products(cream or lotion) and finish your skincare routine.

How to Use Voice Language Selection and Mute Function

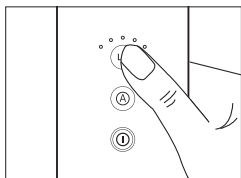
Voice Language Selection (Korean ↔ English)



1. In standby mode, press and hold the Manual Mode button (LV) and the Smart Mode button (A) simultaneously for 5 seconds.

- To enter standby mode: Press the power button briefly once when first powered on or during use.
- If purchased domestically, the default language is set to Korean.

Mute Function



2. In standby mode, press and hold the Manual Mode button (LV) for 5 seconds.

- To enter standby mode: Press the power button briefly once when first powered on or during use.
- Method to deactivate Mute mode: After setting to mute, press and hold the Manual mode button for 5 seconds while in standby mode.

How to Use

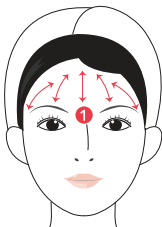
Usage Instructions for Different Facial Areas:

Recommended Care Order

Starting at the top of the face and move downward to perform skin care in the following order for more effective results:

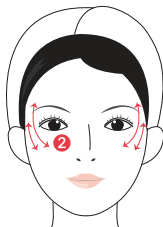
Forehead ► Eye Area ► Cheeks/Nasolabial ► Jawline

Forehead Area



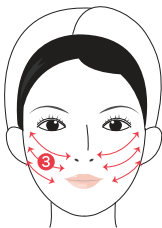
Gently massage from the area above the eyebrows and around the eyes to the hairline.

Eye Area



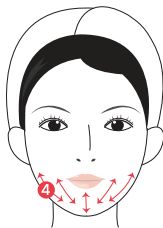
Gently massage from under the eyes, moving towards the corners of the eyes, temples and upper eyebrows.

Cheeks/Nasolabial



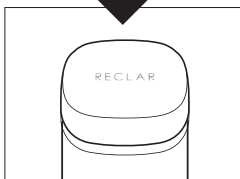
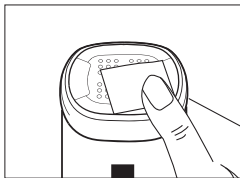
Gently massage along the nasolabial line in a diagonal direction, moving upwards towards the upper eyebrows.

Jawline



Gently massage the area under the jaw and below the cheeks in a soft manner.

Cleaning and Storage Methods



1. After use, dampen a tissue or clean cloth with water and wipe off the remaining massage gel or cream from the head unit and cover it with the protective cap for storage.

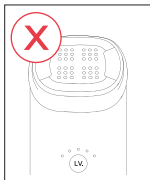
(Automatic sterilization during charging)

- [Refer to page 7 for details on the automatic sterilization function.](#)

2. When storing for an extended time, clean the head unit with an alcohol swab (disinfectant alcohol pad), and cover it with the protective cap for storage.

How to Use

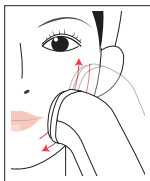
Precautions for Use



Using the device without massage gel or cream may cause skin damage, so be sure to use it with the dedicated massage gel or cream.

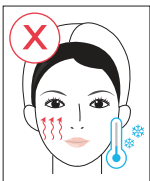


After applying the massage gel or cream to the device, begin the massage immediately. If the device is left with the massage gel or cream applied for an extended time, it may become hot due to the output of high-frequency energy.



If high-frequency energy is continuously applied to the same area without movement, there is a risk of skin burns, so be sure to gently move and massage the skin.

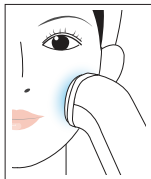
● Refer to page 7 for details on the skin burn prevention function.



During the use, deep heat may be generated in the skin as the cells regenerate, causing a sensation of heat or tingling in the application area.

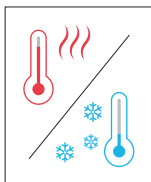
This is a natural process when high-frequency heat energy is used for skin cell regeneration. It is advised to avoid actions that lower the skin temperature, such as washing with cool water or applying cooling massage, for about 20 min after treatment.

- Performing cooling and soothing care after 20 to 30 minutes can lead to more effective care.

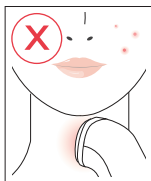


As the skin cells regenerate and recover with repeated care, the relative sensation of heat may decrease even when you increase the care level.

This is not a malfunction of the device.



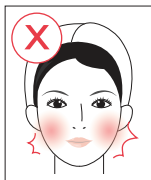
The perceived sensation of heat on the skin may vary depending on the location and environment (temperature) where the device is used. In particular, the sensation of heat may be lower during the summer compared to the winter. Please note that this sensation of heat is unrelated to the high-frequency energy injected into the skin and its cell regeneration effects.



Areas Prohibited for Use

Uvula (thyroid gland)

Areas with acne, inflammation, or wounds



Be careful not to irritate the skin before and after using the product, as the skin may temporarily become sensitive during the skin cell regeneration process.

- Avoid using the product simultaneously with peeling, massage, or other beauty devices.

Precautions

Precautions for Use

- Keep out of the reach of infants and children.
- Do not disassemble or modify the product.
- Avoid dropping or subjecting the product to impact.
- Keep away from strong vibration or magnetic sources.
- When removing the charging cable from the main unit, do not pull the cable; instead hold the end of the cable and disconnect it.
- Do not place the product near an open flame.
- Do not immerse the product in water or wash it with running water.
(If water gets inside the device, it may cause a malfunction, be careful not to allow moisture to enter the device.)
- Do not use the product near high-voltage electrical equipment.
(e.g., electric shockers, mosquito traps, etc.).
- Do not use on areas with inflammation or wounds.
- If you experience skin irritation such as heat on skin, redness, or swelling after 24 hours of use, discontinue use.
- If you have undergone a medical operation or procedure in the area of intended use, consult a medical professional before use.
- If there are metallic materials (e.g., piercings or orthodontic appliances) in the area of intended use, remove them before use.
- When the UV LED is operating during charging for automatic sterilization, do not look directly at it from a close distance to avoid potential visual impairment or corneal damage. Always keep the protective cap closed.
- This product is designed for facial use only; do not use on other body parts.

Storage Precautions

- After using the device, make sure to thoroughly remove any massage gel or cream residue from the head unit of the device before storing.
- Avoid storing the product in places with excessively high temperatures (above 40°C) or low temperatures (below 0°C).
- Keep the product away from direct sunlight and heat sources such as heaters.
- Avoid storing the product in areas with high levels of moisture, dust, or soot.
- Be careful not to expose the product to direct sunlight when storing it in an enclosed area, such as a car.
- Avoid prolonged contact with plastic or rubber materials.
- Refrain from using strong chemical products such as alcohol, benzene, or thinner for cleaning, because they may damage the surface of the product.

Battery-Related Precautions

- When using the product for the first time after purchase, fully charge the battery before use.
- The battery is a consumable item, and the use time of the device may decrease over time.
- If battery replacement is necessary, use the designated service center for replacement.
- This product has a built-in battery. Do not attempt to disassemble or replace the battery.
- Some chargers or charging cables may not work for charging due to their design or structure.
- The wireless charging cradle is exclusively designed for RE-Merge. Do not place or charge other products on the wireless charging cradle.

Frequently Asked Questions

FAQ

- Q.** Do I have to use massage gel or cream when using RE-Merge?
- A.** Yes, you must use massage gel or cream when using RE-Merge. Using the device without massage gel or cream can cause skin burns and damage. It is essential to apply gel or cream before using the device.
- Q.** Why do I need to use the dedicated massage gel or cream?
- A.** The dedicated massage gel or cream is designed so that high-frequency energy can penetrate the skin without causing damage. Regular gel or cream may evaporate too quickly, leading to dryness and reducing the effectiveness of high-frequency energy transmission to the skin.
- Q.** Should I wash off the dedicated gel or cream after using the device?
- A.** The dedicated gel or cream used with RE-Merge is an anti-wrinkle functional cosmetic that contains active ingredients to maximize cell regeneration and skin elasticity. While you can wash it off, it helps improve elasticity if you tap it lightly to absorb it.
- Q.** Can I use it on body parts other than the face?
- A.** RE-Merge is designed specifically for facial use, and is not recommended for use on other body parts. Avoid using it on the neck (thyroid) area, as well as areas with wounds or inflammation.
- Q.** Can I use it after skin-related surgery or procedures?
- A.** After cosmetic surgery or skin-related procedures, consult a medical professional to confirm that it is safe to use. If unsure, it is recommended to refrain from using the device for about two months to allow the skin to fully recover.

Frequently Asked Questions

Q. I charged the device on the wireless charging cradle, but it's not charging.

A. During wireless charging, make sure the front of the device and the logo on the cradle are aligned in the same direction.

Check the alignment of the cradle and the device and try charging again.

● [Refer to page 17 for Battery Charging and Auto Sterilization.](#)

Q. The voice guidance suddenly does not work.

A. RE-Merge supports Korean/English/mute modes for voice guidance.

If the voice guidance is not working, you can switch to voice mode by pressing the Manual Mode button for more than 5 seconds in standby mode.

● [Refer to page 22 for How to Use Voice Language Selection and Mute Function.](#)

Q. The device is not working at all.

A. If the battery is fully discharged, the device may not work.

Please charge the device fully before use.

Q. It is not charging.

A. In some cases, certain chargers or cables may not support charging.

Try using a different charger and cable to charge the device.

Q. How should I clean the device after use?

A. After use, wipe off any residue on the head unit with a wet tissue or alcohol swab, then use the sterilization function during charging for proper sterilization.

● [Refer to page 17 for Battery Charging and Auto Sterilization, page 24 for Cleaning and Storage Methods.](#)

Frequently Asked Questions

Q. What is the recommended usage frequency and duration?

A. The recommended use is once a day for 10 minutes.

If you feel excessive stimulation, use it once every two days.

● [Refer to page 18 for Massage Time and Frequency.](#)

Q. The device seems to be getting hot during use.

A. All electronic devices generate heat during operation.

In the case of RE-Merge, the circuit that generates high-frequency energy is located on the upper part of the device, so there may be a feeling of warmth during use. However, the device is designed to dissipate heat and has safety circuits inside, so you can use it with confidence.

Q. I feel strong stimulation in certain areas.

A. The degree of heat and stimulation may vary depending on the thickness and condition of the facial skin. In particular, if you experience discomfort or excessive heat in sensitive areas such as the thin skin around the eyes, forehead, or jaw, you can apply more massage gel or cream before use or reduce the output level by one step.

Q. The skin moisture measurement in smart mode works even without direct contact with the skin.

A. In smart mode, the device can automatically measure skin moisture even without direct skin contact if there is gel residue on the head electrode or if it is not completely dry. The measurement and operation will return to normal when the device is in direct contact with the skin.

Frequently Asked Questions

- Q.** When using the device, a crackling sound is heard from the head unit.
- A.** During the transmission of high-frequency energy to the skin, the device may produce minor noise due to the frequency. However, this is normal and does not indicate any issues with product performance or operation.
- Q.** I have a question not covered above.
- A.** Please contact RE-Merge Customer Service at +82 80-854-0001 or inquire through RECLAR KakaoTalk Plus Friend.



KakaoTalk Inquiry

Product Specifications

Product Name	RE-Merge
Product Number	RHS-B500
Size	Main Unit 172mm x 46.2 mm x 34.6mm Cradle (Height x Diameter)16.5mm x 94.6mm
Weight	220g (Main Unit 175g, Cradle 45g)
Battery	3.7V 3,000mAh Li-Ion
Charging Time	Wired: About 3 hours / Wireless: About 9 hours
Charging Method	Wired: USB C Type / Wireless: Exclusive charging cradle
Use Time	Approximately 120 minutes
Input Voltage	3.7V
Output Voltage	100V
Power Consumption	10W
Country of Manufacture	South Korea
Manufacturer	RNU Co., Ltd.
Address	58 Maeyero, Dong-gu, Daegu, South Korea
Phone Number	+82 80-854-0001

Please register your genuine product

Access the website with the QR code and go to the genuine product registration page. Provide the serial number(S/N) at the bottom on the back of the device along with other information, to complete the genuine product registration.



- Please note that the genuine product registration authentication system is currently available only in South Korea.

Warranty Policy

- This product has undergone strict quality inspection and process control by RECLAR and is guaranteed with the RECLAR genuine product license.
- If there is a defect in the quality of this product, you can exchange or get a refund within 7 days from the date of receipt.
- This product is eligible for free warranty service according to the warranty regulations provided by the company. However, if it falls under chargeable services according to the warranty regulations, you can receive the service at an additional cost.

Warranty Details

- This product is eligible for quality warranty benefits for 1 year from the date of purchase(Only for the main body and charging cradle).
- The warranty period is calculated from the date of purchase, so please keep the receipt safe.
- If the purchase date cannot be confirmed, the warranty period will be based on the manufacturing date.
- In the case of defects that occur during production, free repair or replacement will be provided.
- Please note that damage or malfunction caused by user negligence are not covered under the warranty, even within the warranty period.
- Unauthorized disassembly or repair by non-designated service centers will void the warranty.

Chargeable Service (at customer's expense)

- In the event of malfunction due to force majeure.
- Damage or malfunction caused by dropping or impacting the product.
- External deformation or damage caused by chemicals such as gasoline or benzene.
- Consumable parts such as batteries and cables.
- Damage or malfunction caused by using parts or accessories other than genuine products.
- Other cases of product malfunction due to customer negligence.

Warranty Policy

Purchase Date:

Purchased From:

RNU Co., Ltd.

Address: 58 Maeyero, Dong-gu, Daegu, South Korea



R-R-gbt-B-500

This warranty policy applies specifically to customers in South Korea, and warranty policies may vary depending on the country/seller.

Please be aware that the images in this manual may differ from the actual product. The information provided in this manual is subject to change based on company circumstances.
