

FOREO
SWEDEN

LUNA™ 3 MEN

DEEP FACIAL CLEANSING TOOL
FOR SKIN & BEARD



ONLINE MANUAL

FULL USER MANUAL

GETTING STARTED

Congratulations on taking the first step toward discovering smarter skincare by acquiring LUNA™ 3 MEN. Before you begin to enjoy all the benefits of sophisticated skincare technology in the comfort of your home, please take a few moments to carefully read the instructions in this manual.

Please READ ALL INSTRUCTIONS BEFORE USE and utilize this product only for its intended use as described in this manual.

⚠️ WARNING: NO MODIFICATION OF THIS EQUIPMENT IS ALLOWED.

LUNA™ 3 MEN OVERVIEW

Meet LUNA™ 3 MEN, the facial cleansing tool that takes care of your skin so you don't have to. Featuring gentle yet firm silicone touchpoints and T-Sonic™ technology, LUNA™ 3 MEN cleans and conditions your skin and beard, removing the grime of the day off your face in just 1 minute, while a targeted firming facial massage reduces the appearance of fine lines so skin looks toned and energized.

Used as part of your daily cleansing routine, LUNA™ 3 MEN's Cleansing Mode channels T-Sonic™ pulsations to provide a much deeper clean than washing by hand, lifting away dirt, oil and dead skin cells to reduce breakouts, remove ingrown hairs, prevent razor burn, and help razor blades last up to 2x longer.

The Firming Massage Mode can then be enjoyed by turning your LUNA™ 3 device around and pressing the concentric ridges on the back to your skin, while gentle T-Sonic™ pulsations deliver a relaxing massage that helps diminish visible signs of aging.

GETTING TO KNOW YOUR DEVICE



T-SONIC™ PULSATIONS
16 intensities & 8,000 pulsations per minute for deep and effective cleaning.

BACTERIA-RESISTANT SILICONE
35x more hygienic than nylon bristles, BPA and phthalate-free, and suitable for all skin types.

SMART SWEDISH DESIGN
Tailor-made for each skin type with no replacement brush heads required.

CHARGING PORT
Up to 650 uses per charge. 100% waterproof closure.

CONCENTRIC RIDGES
Deliver a firming facial massage that reduces the appearance of fine lines.

UNIVERSAL POWER BUTTON
Turns device on and off and puts device in Bluetooth pairing mode.

INDICATOR LIGHT
Flashes to indicate when device is in Bluetooth pairing mode and when device needs to be charged.



2ML SAMPLE SERUM
Provides the perfect base for your firming massage



INTERACTIVE FOREO APP
Control device settings and select your preferences



USB CABLE
Charge anytime, anywhere with USB cable



TRAVEL POUCH
Conveniently store device for skincare on the go

HOW TO USE LUNA™ 3 MEN

CLEANSING MODE

To unlock and register your device, activate Bluetooth on your mobile device or tablet and then press the universal button to sync to the FOREO For You app and set up your cleansing preferences.

- 1 Dampen your face and apply your regular cleanser. Then dampen the device.
- 2 Press the universal button again to activate your device.
- 3 Cleanse using circular movements on cheeks, forehead and chin, gliding up and down the nose.
- 4 Press and hold button for 3 seconds to turn off device.
- 5 Rinse and pat your face dry.

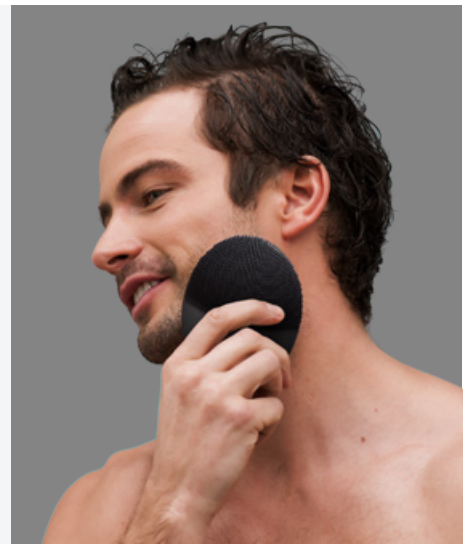


NOTE: If the long silicone bristles become tangled, gently brush them in any direction to reset them to their normal position.

FIRMING MESSAGE MODE

- 1 Apply a serum of your choice to clean, dry skin for enhanced results, before pressing the universal button to activate your device.
- 2 Press the concentric ridges on the back of the device to your skin and glide across cheeks, forehead and chin slowly, in an upward motion toward your hairline, with light pressure.
- 3 Follow with moisturizer of your choice.

** Device will automatically switch off after 1 minute.*



CLEANING YOUR DEVICE

Always clean LUNA™ 3 MEN thoroughly after use. Wash the brush surface with water and soap, then rinse with warm water. Avoid using clay-based, silicone-based or grainy cleansers, exfoliators or scrubs, as they may damage LUNA™ 3's soft silicone. Pat dry with a lint-free cloth or towel. After use, we recommend spraying the device with FOREO Silicone Cleaning Spray and rinsing with warm water for optimal results.

NOTE: Never use cleaning products containing alcohol, petrol or acetone, as they may irritate the skin and damage the silicone.

IMPORTANT FOR OPTIMUM SAFETY:

- If you have a skin condition or any medical concerns, please consult a dermatologist before use.
- Cleansing with LUNA™ 3 MEN should be comfortable – if you experience discomfort, discontinue use immediately and consult a physician.
- Exercise particular care when cleansing the under-eye regions and do not bring the device into contact with the eyelids or eyes themselves.
- For reasons of hygiene, we do not recommend sharing your device with anyone else.
- Avoid leaving your device in direct sunlight and never expose it to extreme heat or boiling water.
- Close supervision is necessary when this device is used by, on, or near children, as well as those with reduced physical and mental abilities.
- Discontinue use if this product appears damaged in any way. This product contains no serviceable parts.
- Given the efficiency of the FOREO cleansing routine, we recommend that you do not use LUNA™ 3 MEN for more than 3 minutes at a time.
- Use this device only for its intended use as described in this manual. If you do not find the answer to your specific question, or if you have any other questions regarding the device's operation, please visit foreo.com/support.

TROUBLESHOOTING

PRECAUTIONS TO BE TAKEN IN THE EVENT OF CHANGES IN THE PERFORMANCE OF LUNA™ 3 MEN.

If LUNA™ 3 MEN is not activated when pressing the center button:

- Battery is dead, Recharge using USB charging cable for 2 hours until fully charged and then restart your device by holding down the universal power button.

If LUNA™ 3 MEN cannot be switched off and/or interface buttons do not respond:

- Microprocessor is temporarily malfunctioning. Press and hold universal power button to restart the device.

If LUNA™ 3 MEN won't sync to the FOREO For You app:

- Switch your Bluetooth off and then on again to try reconnecting.
- Close the FOREO For You app and then reopen it to start the process over.

WARRANTY TERMS & CONDITIONS

REGISTER WARRANTY

To activate your 2-Year Limited Warranty register through the FOREO For You app, or visit foreo.com/product-registration for more information.

2-YEAR LIMITED WARRANTY

FOREO warrants this device for a period of TWO (2) YEARS after the original date of purchase against defects due to faulty workmanship or materials arising from normal use of the device. The warranty covers working parts that affect the function of the device. It does NOT cover cosmetic deterioration caused by fair wear and tear, or damage caused by accident, misuse or neglect. Any attempt to open or take apart the device (or its accessories) will void the warranty.

If you discover a defect and notify FOREO during the warranty period, FOREO will, at its discretion, replace the device free of charge. Claims under warranty must be supported by reasonable evidence that the date of the claim is within the warranty period. To validate your warranty, please keep your original purchase receipt together with these warranty conditions for the duration of the warranty period.

To claim your warranty, you must log in to your account at www.foreo.com and then select the option to make a warranty claim. Shipping costs are nonrefundable. This undertaking is in addition to your statutory rights as a consumer and does not affect those rights in any way.

DISPOSAL INFORMATION

Disposal of old electronic equipment (applicable in the EU and other European countries with separate waste collection systems).



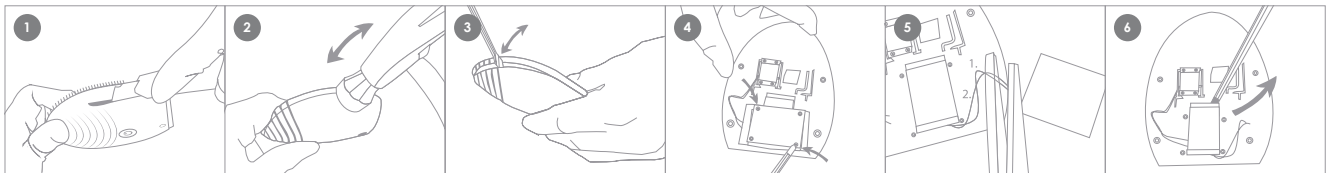
The crossed-out dustbin symbol indicates that this device should not be treated as household waste, but rather be brought to the appropriate collection point for recycling of electrical and electronic equipment. By ensuring this device is disposed of correctly, you will help prevent the potential negative consequences for the environment and human health which could be caused by inappropriate waste handling of the product. The recycling of materials will also help conserve natural resources.

For more information about the recycling of your device, please contact your local household waste disposal service or your place of purchase.

BATTERY REMOVAL

NOTE: This process is not reversible. Opening the device will void its warranty. This action must only be undertaken when the device is ready to be disposed of.

Because this device contains a lithium-ion battery, the battery must be removed before disposal and should not be thrown away with household waste. To remove the battery, open the inner plastic shell after removing silicone outer layer and remove the battery to be disposed of in accordance with your local environmental regulations. Wear gloves during this process for your safety. Detailed visual instructions are provided below:



SPECIFICATIONS

MATERIALS: Body-safe silicone & ABS plastic

COLOR: Black

SIZE: 102*82.5*39.2mm

WEIGHT: 126g

BATTERY: Li-ion 850mAh 3.7V

USAGE: Up to 650

STANDBY: 90 days

FREQUENCY: 100 Hz

MAX NOISE LEVEL: <50dB

INTERFACE: 1- button

Disclaimer: Users of this device do so at their own risk. Neither FOREO nor its retailers assume any responsibility or liability for any injuries or damages, physical or otherwise, resulting, directly or indirectly, from the use of this device. Further, FOREO reserves the right to revise this publication and to make changes from time to time in the contents thereof without obligation to notify any person of such revision or changes.

Any changes or modifications not expressly approved by the party responsible for compliance could void the user's authority to operate the equipment. This device complies with part 15 of the FCC Rules. Operation is subject to the following two conditions: (1) This device may not cause harmful interference, and (2) this device must accept any interference received, including interference that may cause undesired operation.

RF exposure statement: This equipment complies with FCC radiation exposure limits set forth for an uncontrolled environment. The device has been evaluated to meet general RF exposure requirement. The device can be used in portable exposure condition without restriction.

MODEL MAY BE CHANGED FOR IMPROVEMENTS WITHOUT NOTICE.

©2020 FOREO AB. ALL RIGHTS RESERVED.

IMPORTER AND DISTRIBUTOR IN EU: FOREO AB, KARLÄVAGEN 41, 114 31 STOCKHOLM, SWEDEN

IMPORTER AND DISTRIBUTOR IN US: FOREO INC., 1525 E. PAMA LANE, LAS VEGAS, NV 89119, USA

IMPORTER AND DISTRIBUTOR IN AUS.: 6 PROHASKY STREET, PORT MELBOURNE, VIC, 3207 AUSTRALIA.

MANUFACTURED FOR FOREO AB DESIGNED AND DEVELOPED BY FOREO SWEDEN.

WWW.FOREO.COM